

# Deaths Due to Malignant Neoplasm (Cancer) in the Philippines: 2011 to 2013

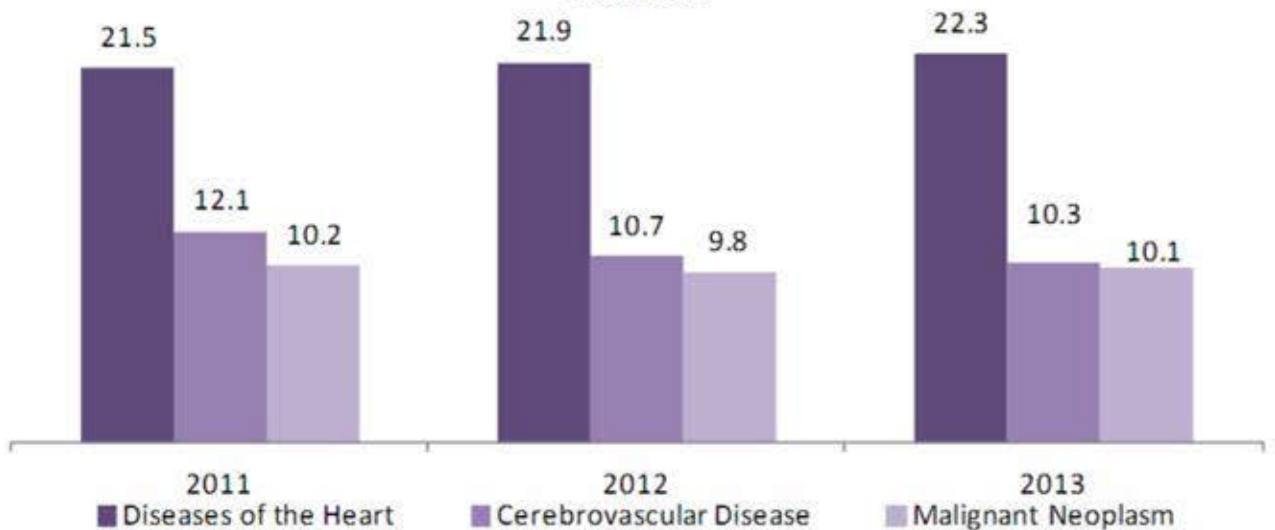
Malignant Neoplasm known as *Cancer* is the third leading cause of death in the Philippines in years 2011 to 2013. One in ten deaths registered annually was due to malignant neoplasm. Cancer of trachea, bronchus and lung is the most common type of cancer accounting for about 80 thousand deaths yearly in 2011 to 2013.



1 IN EVERY 10 REGISTERED DEATHS died yearly due to Malignant Neoplasm in 2011 to 2013.

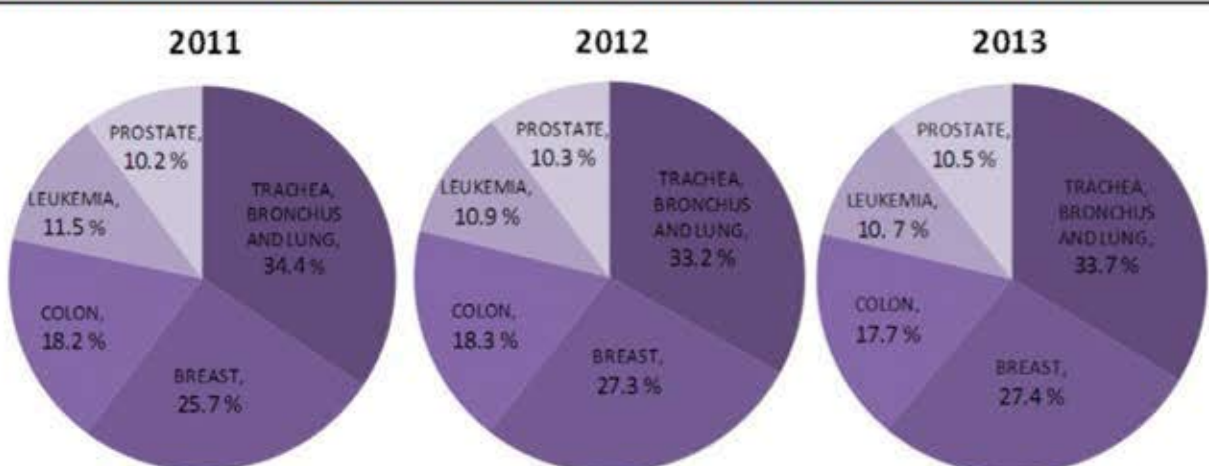
MALIGNANT NEOPLASM is the third leading cause of death in the country in 2011 to 2013.

Percent Distribution of the Top Three Leading Causes of Death: Philippines 2011-2013



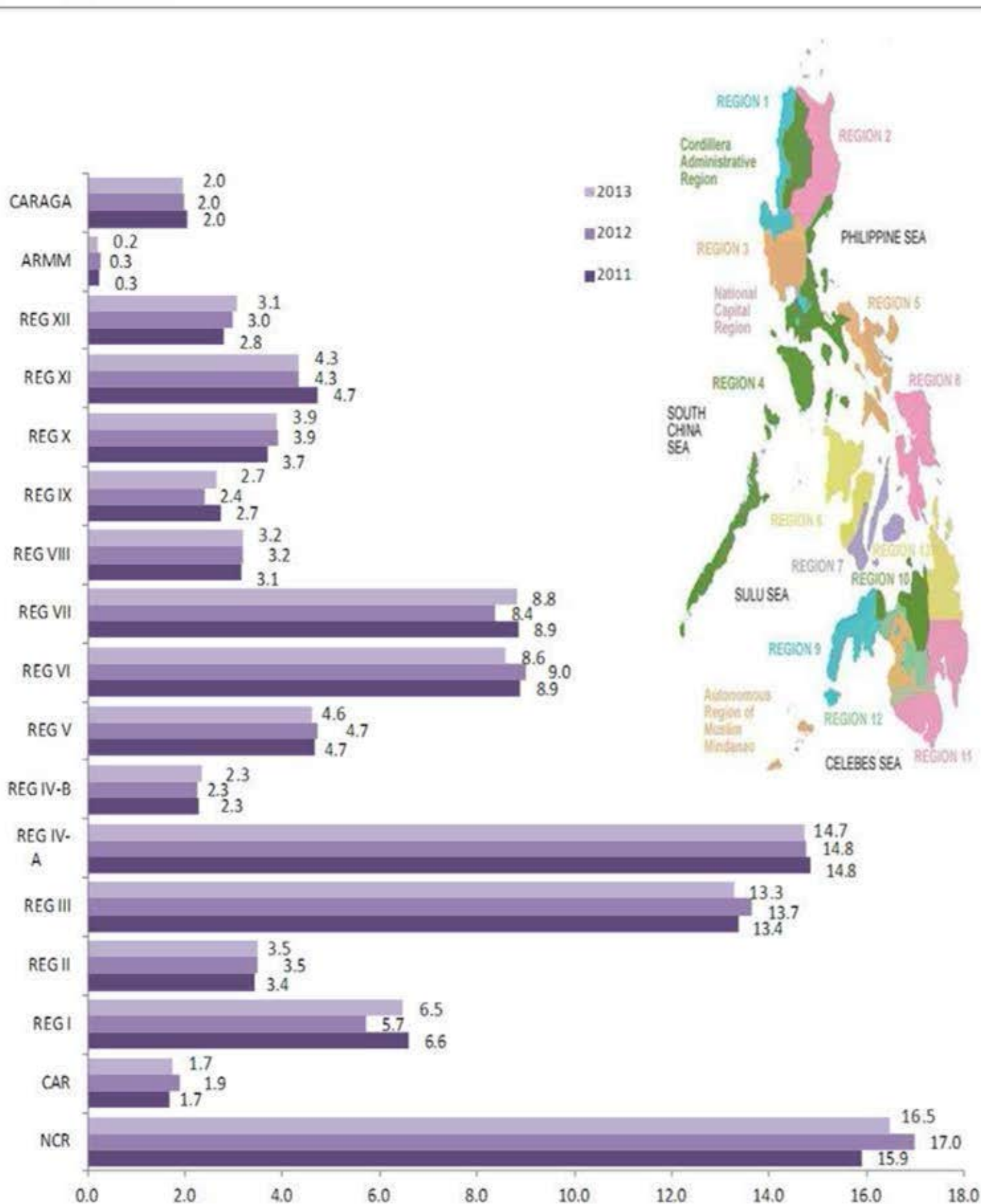
Source: PSA Vital Statistics Report, 2011-2013

TOP FIVE COMMON TYPES OF MALIGNANT NEOPLASM, PHILIPPINES: 2011 TO 2013



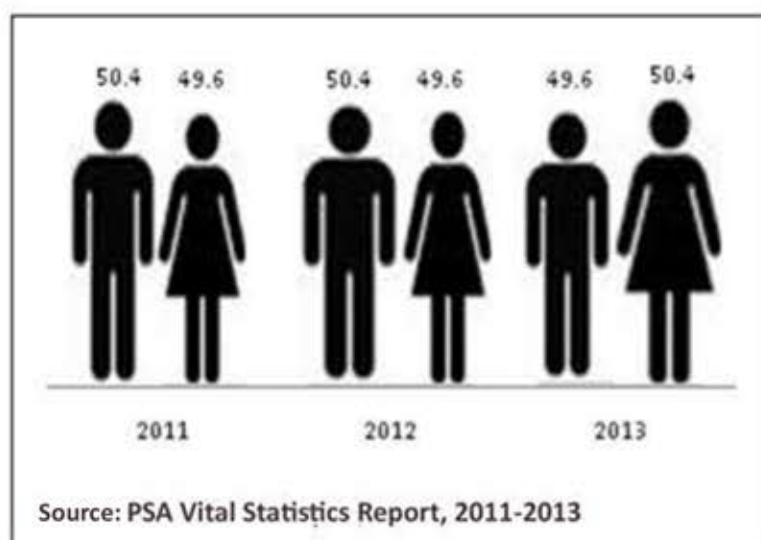
Source: PSA Vital Statistics Report, 2011-2013

**PERCENT DISTRIBUTION OF DEATHS DUE TO MALIGNANT NEOPLASM, BY USUAL RESIDENCE, PHILIPPINES: 2011-2013**

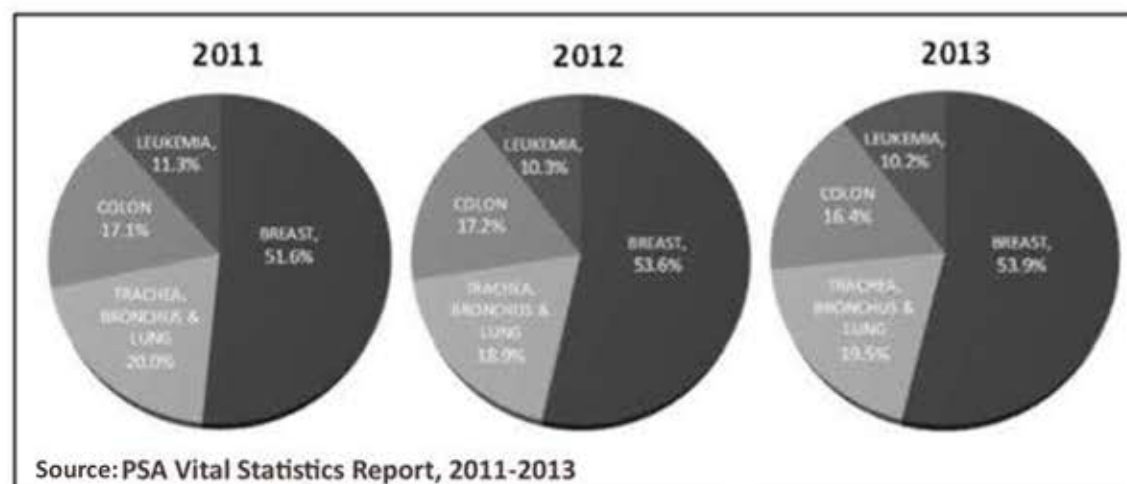
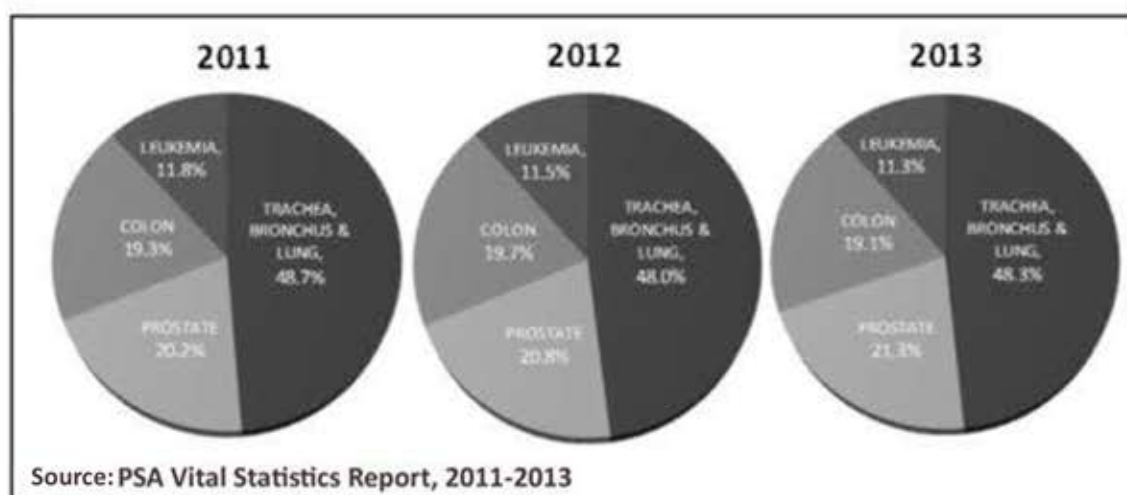


Source: PSA Vital Statistics Report, 2011-2013

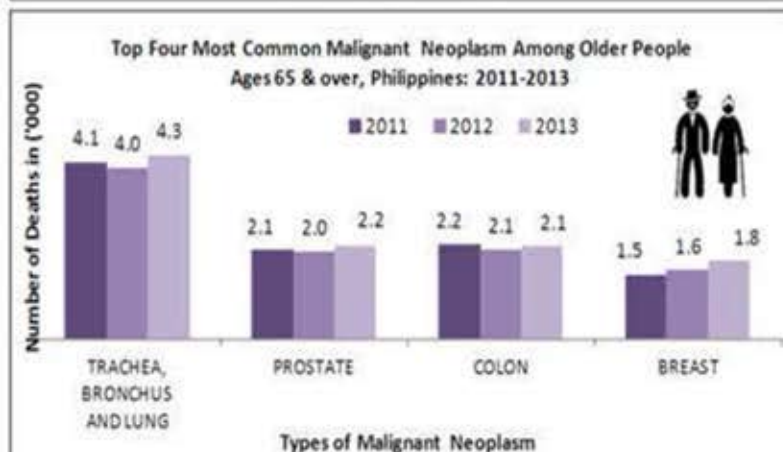
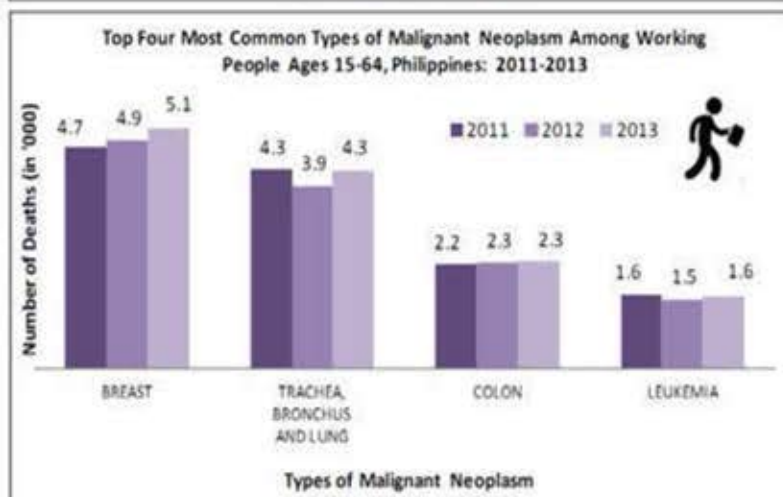
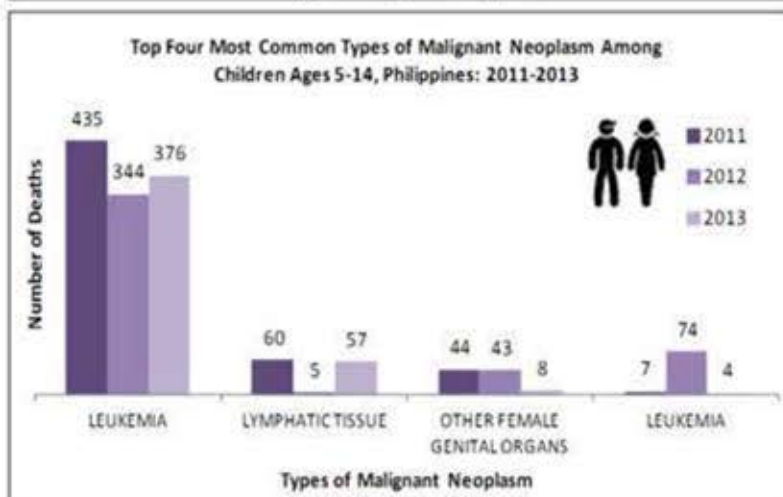
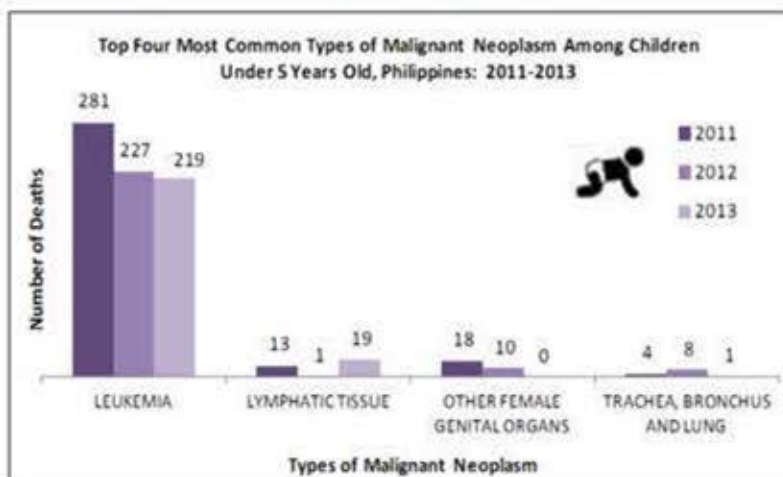
## PERCENT DISTRIBUTION OF DEATHS DUE TO MALIGNANT NEOPLASM BY SEX, PHILIPPINES: 2011-2013



## TOP FOUR MOST COMMON TYPES OF MALIGNANT NEOPLASM BY SEX, PHILIPPINES: 2011 TO 2013



## TOP FOUR MOST COMMON TYPES OF MALIGNANT NEOPLASM BY AGE GROUPS, PHILIPPINES: 2011 TO 2013



## DEFINITION OF TERMS

**Civil Registration** is a continuous, permanent and compulsory recording of vital events occurring in the life of an individual such as birth, marriage and death as well as court decrees and legal instruments affecting his status in appropriate registers as mandated by Act 3753, the Civil Registry Law.

**Death** refers to the permanent disappearance of all evidence of life at anytime after live birth has taken place (postnatal cessation of vital function without capability of resuscitation).

**Death Statistics** refer only to the number of deaths registered during the year.

## EXPLANATORY NOTES

The information presented herein was obtained from the death certificates (Municipal Form No. 103) occurring from 2011 to 2013, submitted by the City/Municipal Registrars from all over the country to the Civil Registration Service of the Philippine Statistics Authority for processing and archiving purposes. There was no adjustment for under-registration in the analysis.

All the UNDERLYING CAUSES OF DEATH are coded in accordance with the International Classification of Diseases and Related Health Problems (ICD-10).



For more information or inquiries:

**Vital Statistics Division**  
Civil Registration Service  
Civil Registration and Central Support Office  
Philippine Statistics Authority (PSA)  
E-mail: a.reolalas@psa.gov.ph  
Telephone No.: 283-1875

For copies of the publication, contact:  
Knowledge Management and Communication Division  
E-mail: s.nisperos@psa.gov.ph  
Telephone Nos: 462-6600 local 810/833 & 834

PSA Website: <http://www.psa.gov.ph>