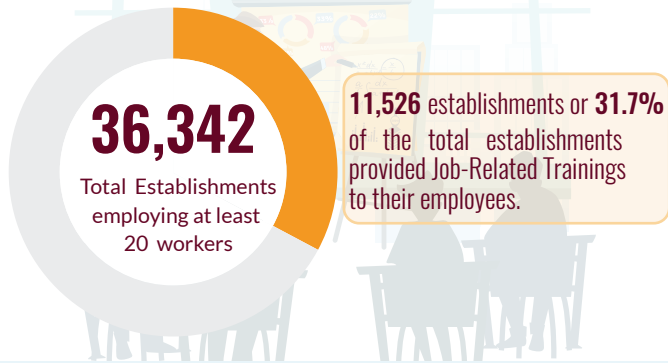
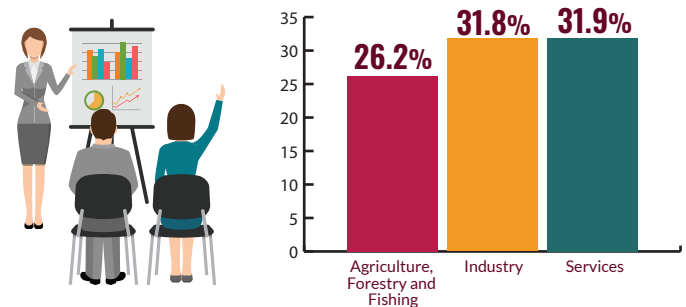


## Establishments with Job-Related Trainings



## Proportion of Establishments with Job-Related Trainings by Sector



## Percent Share of Establishments by Training Provider

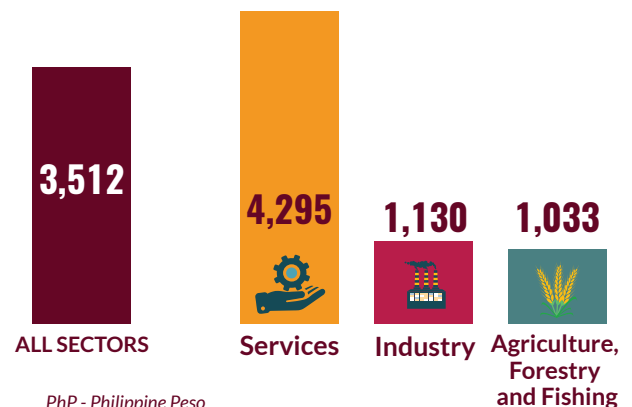


Note: Details may not add up to 100 percent due to multiple response.

## Percent Distribution of Trained Employees by Sector



## Average Training Cost Incurred Per Trained Employee by Sector (In Php)



## Average Training Cost Incurred by Type of Employee (In Php)



Note: The 2021/2022 Integrated Survey on Labor and Employment covers formal establishments employing at least 20 workers.

