

ISSN 2012-0362



# SELECTED STATISTICS ON AGRICULTURE *2015*



REPUBLIC OF THE PHILIPPINES  
PHILIPPINE STATISTICS AUTHORITY

## **TERMS OF USE**

***Selected Statistics on Agriculture 2015*** is a publication of the Philippine Statistics Authority. The PSA reserves exclusive right to reproduce this publication in whatever form. Should any portion of this publication be included in a report/article, the title of the publication and the PSA should be cited as the source of the data. The PSA will not be responsible for any information derived from the processing of data contained in this publication.

**ISSN-2012-0362**  
**JUNE 2015**

*Please direct technical inquiries to:*

The Office of the National Statistician  
PHILIPPINE STATISTICS AUTHORITY  
East Avenue, Diliman, Quezon City,  
Philippines 1104

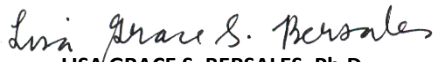
Website : [www.psa.gov.ph](http://www.psa.gov.ph)

## FOREWORD

The 2015 Selected Statistics on Agriculture (SSA) is the 26<sup>th</sup> issue of the annual statistical report published by the Philippine Statistics Authority (PSA). It provides a five-year data series (2010-2014) for selected macroeconomic indicators and agricultural production by subsector and by commodity, including statistics on production costs and returns, price and trade, and supply utilization accounts. Through this report, the PSA consolidates statistics and indicators that can respond to the needs of our data users.

The 26<sup>th</sup> issue of SSA can be downloaded from [www.psa.gov.ph](http://www.psa.gov.ph) and is available in printed copies.

As the PSA strives to improve its statistical products and services, we welcome comments and feedback on the contents and format of this publication.



**LISA GRACE S. BERSALES, Ph.D.**

National Statistician and Civil Registrar General

Quezon City, Philippines  
June 2015

## ACKNOWLEDGMENT

Our appreciation and gratitude go to the following agencies for their cooperation and support in sharing with us their data: *Agricultural Credit Policy Council (ACPC), Asian Development Bank (ADB), Bureau of Animal Industry (BAI), Bureau of Fisheries & Aquatic Resources (BFAR), Bangko Sentral ng Pilipinas (BSP), Department of Budget and Management (DBM), Development Bank of the Philippines (DBP), Food and Agriculture Organization (FAO), Fertilizer and Pesticide Authority (FPA), Philippine Fiber Industry Development Authority (PhilFIDA), National Food Authority (NFA), National Irrigation Administration (NIA), Philippine Coconut Authority (PCA), Philippine National Bank (PNB), Sugar Regulatory Administration (SRA) and World Bank (WB).*

## TABLE OF CONTENTS

	Page
Foreword .....	i
Acknowledgment .....	ii
Table of Contents .....	iii
Explanatory Notes .....	iv
An Overview of the Philippine Agricultural Economy .....	1
Selected Macroeconomic and Agriculture Sector Statistics .....	4
Crops Subsector Statistics .....	10
Livestock & Poultry Subsector Statistics .....	20
Fisheries Subsector Statistics .....	26
Production Costs and Returns .....	32
Price Statistics .....	36
Agricultural Foreign Trade Statistics .....	44
Supply Utilization Accounts .....	56

## EXPLANATORY NOTES

1. Data sets are sourced from various agricultural surveys conducted by PSA for crops, livestock and poultry and fisheries. Estimation procedures are based on the established sampling methodology used for each survey as discussed in detail in the Metadata for National Agricultural Statistics in the Philippines.
2. Unless otherwise indicated, year refers to calendar year.
3. Sources of basic data are acknowledged at the bottom of each table.
4. As a rule, figures from source publications were copied to the extent possible. In some instances, however, figures were rounded-off or combined.
5. Figures may not add up to the totals due to rounding off.
6. Yield per hectare is derived prior to rounding-off the data on production and hectareage.
7. The following symbols and abbreviations are used in the tables:

---	<i>Data not yet available</i>
-	<i>None</i>
R	<i>Revised</i>
P	<i>Preliminary</i>
mt	<i>Metric Ton</i>
ha(s)	<i>Hectare/s</i>
kg	<i>Kilogram</i>
GNI	<i>Gross National Income</i>
GVA	<i>Gross Value Added</i>
GDP	<i>Gross Domestic Product</i>
PDB	<i>Private Development Bank</i>
SMB	<i>Savings and Mortgage Bank</i>
SSLA	<i>Stock Savings &amp; Loan Association</i>
FOB	<i>Freight on Board</i>
CIF	<i>Cost Insurance Freight</i>
NFD	<i>Net Food Disposable</i>
CPH	<i>Census of Population and Housing</i>

## AN OVERVIEW OF THE PHILIPPINE AGRICULTURAL ECONOMY

**Economic Performance.** In 2014, the country's Gross National Income (GNI) grew by 5.78 percent. Gross Domestic Product (GDP) registered a 6.13 percent increment. Gross Value Added (GVA) in agriculture and fishing went up by 1.60 percent. This sector accounted for 10 percent of the GDP.

**Production Performance in Agriculture.** Gross output in agriculture inched up by 1.40 percent in 2014. Among the subsectors, crops recorded the highest production growth rate at 2.50 percent. Production gains were posted by palay at 2.87 percent and corn at 5.33 percent. Output declines were recorded for coconut, coffee, mungo, calamansi and camote.

Production in the livestock subsector improved by 1.01 percent. Gross outputs from hog, cattle and carabao rose by 1.0 percent, 1.11 percent and 1.10 percent, respectively. Goat production was up by 0.91 percent. Dairy had a 1.03 percent output gain. The poultry subsector came up with a 0.27 percent increase in production. Chicken and duck production grew by 1.07 percent and 0.46 percent, respectively. Chicken egg production contracted by 2.81 percent. Production of duck eggs was up by 1.07 percent.

The fisheries subsector recorded a 0.45 percent reduction in output. Downtrends in production were noted among the major species such as milkfish, tilapia, roundscad and seaweed.

**Prices.** On the average, prices received by farmers for their produce in 2014 were 11.13 percent higher than the 2013 levels. Prices of cereals and commercial crops had the biggest increments corresponding to 19.28 percent and 22.87 percent. Price gains were also recorded for fruits at 6.26 percent, livestock at 6.01 percent, poultry at 6.11 percent and fishery at 3.06 percent. Meanwhile, prices of vegetables and legumes were down by 2.56 percent and rootcrops and tubers by 11.01 percent.

On the other hand, the prices paid by consumers for food and non-alcoholic beverages were up by an average of 6.68 percent.

**Agricultural Trade.** The country's earnings from agricultural exports increased by 5.78 percent in 2014. Top earners were coconut oil and fresh banana which contributed 37 percent to the total value of agricultural exports. Major markets for coconut oil were United States of America and the Netherlands and for fresh banana, Japan and China.

The expenditures for agricultural imports in 2014 were up by 19.86 percent. Highest spending was recorded on wheat and meslin, soyabean oil/cake meal, and milk and cream and products. These accounted for a combined share of about 28 percent in the total value of agricultural imports. USA was the leading supplier of wheat and meslin and soyabean oil/cake meal. New Zealand was the primary source of milk and cream and products.

The country maintained an agricultural trade deficit in 2014. Deficits were noted with major trading partners such as Australia, USA, ASEAN countries and the European Union. Agricultural trade surplus with Japan was sustained.

**Employment and Wages.** Excluding Eastern Visayas, labor force in 2014 totaled 40.05 million persons. Employment rate was 93 percent. About 11.21 million persons were employed in the agriculture sector and this comprised 30 percent of the national employment. In the first half of 2014, the daily nominal wage rates received by palay and corn farm workers were P287.52 and P230.36, respectively.

**Agricultural Support Services.** In 2014, government expenditures for the agriculture sector amounted to P112.09 billion or 19.03 percent higher than the 2013 record. The amount was 4.95 percent of the total national expenditures.

Agricultural loans totaled P778.25 billion of which 32 percent were loans used for production purposes.





**SELECTED  
MACROECONOMIC  
AND AGRICULTURE  
SECTOR STATISTICS**

# MACROECONOMIC & AGRICULTURE STATISTICS

**Table 1.1 MACROECONOMIC GROWTH INDICATORS,  
PHILIPPINES, 2010-2014**

(Value at constant 2000 prices)

ITEM	2010	2011	2012R	2013R	2014
<b>GNI</b> (million pesos)	<b>6,851,138</b>	<b>7,058,037</b>	<b>7,559,511</b>	<b>8,168,768</b>	<b>8,640,645</b>
<i>Growth Rate (%)</i>	-1.97	3.02	7.11	8.06	5.78
<b>GDP</b> (million pesos)	<b>5,701,539</b>	<b>5,910,201</b>	<b>6,305,229</b>	<b>6,750,079</b>	<b>7,164,017</b>
<i>Growth Rate (%)</i>	7.63	3.66	6.68	7.06	6.13
<b>GVA IN AGRICULTURE EXCLUDING FORESTRY</b>					
(million pesos)	<b>659,989</b>	<b>676,075</b>	<b>695,130</b>	<b>701,325</b>	<b>712,559</b>
<i>Growth Rate (%)</i>					
<i>Agriculture Sector</i>	0.02	2.44	2.82	0.89	1.60
<i>Crops</i>	-1.89	4.97	4.27	0.03	2.38
<i>Livestock</i>	0.64	1.96	1.09	1.77	1.02
<i>Poultry</i>	7.67	4.40	4.60	4.22	0.32
<i>Fishing</i>	-0.50	-4.33	-0.38	0.75	-0.39
<i>Agricultural Activities and Services</i>	3.31	3.02	2.14	0.65	4.51

Source: PSA

**Table 1.1a PERFORMANCE OF AGRICULTURE BY SUBSECTOR,  
PHILIPPINES, 2010-2014**

(Value at constant 2000 prices)

ITEM	2010	2011	2012R	2013R	2014
<b>GROSS OUTPUT IN AGRICULTURE</b>					
(million pesos)	<b>731,489</b>	<b>747,353</b>	<b>768,836</b>	<b>777,457</b>	<b>788,319</b>
<i>Growth Rate (%)</i>	-0.44	2.17	2.87	1.12	1.40
<b>Crops</b> (million pesos)	<b>363,718</b>	<b>380,906</b>	<b>396,342</b>	<b>396,351</b>	<b>406,258</b>
<i>Growth Rate (%)</i>	-2.63	4.73	4.05	0.00	2.50
<b>Livestock</b> (million pesos)	<b>120,268</b>	<b>122,679</b>	<b>124,041</b>	<b>126,216</b>	<b>127,495</b>
<i>Growth Rate (%)</i>	1.45	2.01	1.11	1.75	1.01
<b>Poultry</b> (million pesos)	<b>100,965</b>	<b>105,379</b>	<b>110,136</b>	<b>114,859</b>	<b>115,169</b>
<i>Growth Rate (%)</i>	3.80	4.37	4.51	4.29	0.27
<b>Fisheries</b> (million pesos)	<b>146,538</b>	<b>138,389</b>	<b>138,318</b>	<b>140,030</b>	<b>139,397</b>
<i>Growth Rate (%)</i>	0.82	-5.56	-0.05	1.24	-0.45

Source: PSA

**Table 1.2 POPULATION, LABOR FORCE AND EMPLOYMENT AND WAGE RATES INDICES, PHILIPPINES, 2010-2014**

ITEM	2010	2011	2012	2013	2014
<b>POPULATION</b> (million persons) <sup>1/</sup>	92.34	94.82	96.51	98.20	99.88
<b>LABOR FORCE</b> (million persons) <sup>2/</sup>	38.89	40.00	40.43	41.02	40.05
Employment	36.04	37.19	37.60	38.12	37.31
Agriculture	11.96	12.27	12.09	11.84	11.21
Unemployment	2.86	2.81	2.83	2.90	2.74
<b>WAGE RATE INDICES IN AGRICULTURE</b> (Without Meal) <sup>3/</sup>					
Nominal	120.00	125.40	133.70	141.00	166.20 <i>a</i> 160.80 <i>b</i>
Real	99.60	99.50	102.80	105.30	120.10 <i>a</i> 116.20 <i>b</i>

<sup>1/</sup> 2010 is CPH result; 2011 to 2014 population are projected based on 2010 CPH

<sup>2/</sup> 2014 estimates do not include Eastern Visayas

<sup>3/</sup> 2014 indices covered only the first semester wage rates for (a) palay and (b) corn; 2010 to 2014 indices used 2006 as base year

Source: PSA

**Table 1.3 PESO EXCHANGE RATE, INFLATION RATE AND PURCHASING POWER, PHILIPPINES, 2010-2014**

ITEM	2010	2011	2012	2013	2014
<b>OFFICIAL EXCHANGE RATE</b>					
(Pesos per US dollar)	45.11	43.31	42.23	42.45	44.40
<b>HEADLINE INFLATION RATE (%)</b> <sup>4/</sup>	3.88	4.65	3.17	3.00	4.10
<b>PURCHASING POWER OF PESO</b>	0.83	0.79	0.77	0.75	0.72

<sup>4/</sup> 2006 as base year

Source: BSP

## MACROECONOMIC & AGRICULTURE STATISTICS

**Table 1.4 SHARE OF AGRICULTURE IN THE NATIONAL GOVERNMENT EXPENDITURES, PHILIPPINES, 2010-2014**

ITEM	2010	2011	2012	2013R	2014P
<b>NATIONAL GOVERNMENT</b>					
(million pesos)	1,472,977	1,580,017	1,828,981	1,998,376	2,264,629
<b>AGRICULTURE</b>					
	86,239	56,012	88,186	94,166	112,087
<b>AGRICULTURE TO NATIONAL GOVERNMENT</b>					
<b>RATIO (%)</b>	5.85	3.55	4.82	4.71	4.95

Source: DBM

**Table 1.5 SUPPLY OF FERTILIZER (All Grades) BY SOURCE, PHILIPPINES, 2010-2014**

ITEM	2010	2011	2012	2013	2014
<b>TOTAL SUPPLY</b> ('000 mt)	2,153.0	2,150.0	1,609.5	1,208.7	---
<b>Production</b> ('000 mt)	182.5	614.5	314.0	335.8	---
<i>Production to Total</i>					
<i>Supply Ratio (%)</i>	8.5	28.6	19.5	27.8	---
<b>Import</b> ('000 mt)	1,970.5	1,535.5	1,295.5	872.9	---
<i>Import to Total</i>					
<i>Supply Ratio (%)</i>	91.5	71.4	80.5	72.2	---

Source: FPA

**Table 1.6 SHARE OF SERVICE AREA IN THE TOTAL IRRIGABLE AREA, PHILIPPINES, 2010-2014**

ITEM	2010	2011	2012	2013	2014
<b>SERVICE AREA</b> (million ha)	1.54	1.57	1.63	1.68	1.71
<b>SERVICE AREA TO TOTAL IRRIGABLE</b>					
<b>AREA RATIO (%)</b>	49.34	50.25	52.03	55.59	56.57

Source: NIA

**Table 1.7 AGRICULTURAL PRODUCTION LOANS BY COMMODITY AND SOURCES, PHILIPPINES, 2010-2014**

ITEM	2010	2011	2012R	2013R	2014P
<b>LOANS GRANTED BY COMMODITY</b> (million pesos)					
<b>FOOD</b>					
<b>COMMODITIES</b>	76,844.3	87,434.2	92,957.2	101,800.0	110,942.5
Cereals	34,982.3	40,885.0	45,711.4	50,864.9	56,229.0
<i>Palay</i>	32,771.4	36,547.5	40,078.7	44,313.5	48,979.0
<i>Corn</i>	2,137.4	4,288.1	5,509.7	6,421.2	7,112.7
<i>Sorghum</i>	8.4	39.3	36.1	37.7	39.1
<i>Soybeans and Feedgrains</i>	65.1	10.0	86.8	92.5	98.3
Fruits, Vegetables and Rootcrops	7,785.6	8,743.0	8,780.4	9,673.8	10,610.9
Livestock and Poultry	28,928.3	32,590.0	32,677.8	35,139.0	37,598.4
Fisheries	5,148.2	5,216.2	5,787.5	6,122.3	6,504.3
<b>EXPORT AND COMMERCIAL</b>					
<b>COMMODITIES</b>	17,399.0	16,701.8	19,268.4	21,216.2	23,150.5
Abaca and other Fibers	81.3	127.4	133.8	143.2	150.2
Coconut	6,257.8	6,391.9	5,619.1	5,984.1	6,134.1
Coffee and Cacao	771.7	472.0	323.1	332.4	341.9
Rubber	36.3	84.7	85.7	87.9	99.7
Sugarcane	8,867.4	7,983.1	11,342.0	12,749.9	14,338.4
Tobacco	1,384.6	1,642.7	1,764.8	1,918.7	2,086.3
<b>FORESTRY</b>	314.8	315.5	529.8	551.9	574.8
<b>OTHERS</b>	34,721.8	43,036.5	43,004.7	45,421.7	47,793.2
<b>SUB-TOTAL</b>	129,279.8	147,488.0	155,760.1	168,989.8	182,460.9
<b>OTHER LOANS SOURCED FROM</b>					
<b>SSLA</b>	17,620.0	20,024.0	13,866.0	16,096.1	16,375.4
<b>SMB</b>	37,293.0	32,560.0	23,382.0	24,479.7	25,628.9
<b>PDB</b>	21,311.0	15,070.0	18,413.0	20,217.4	22,198.6
<b>GRAND TOTAL</b>	205,503.8	215,142.0	211,421.1	229,782.9	246,663.8

Source: ACPC

**Table 1.7a SHARE OF AGRICULTURE IN THE TOTAL LOANS  
PHILIPPINES, 2010-2014**

ITEM	2010	2011	2012R	2013R	2014P
<b>AGRICULTURAL PRODUCTION LOAN TO OUTPUT (GVA)</b>					
<b>RATIO (%)</b>	<b>18.5</b>	<b>17.4</b>	<b>16.9</b>	<b>17.7</b>	<b>17.3</b>
<b>AGRICULTURAL LOANS</b> (million pesos, at current prices)					
	<b>612,327.0</b>	<b>642,743.3</b>	<b>669,595.7</b>	<b>723,639.8</b>	<b>778,250.0</b>
<b>TOTAL LOANS</b> (million pesos, at current prices)					
	<b>30,303,463.8</b>	<b>33,343,260.3</b>	<b>35,440,936.6</b>	<b>37,708,484.5</b>	<b>40,195,025.9</b>
<b>AGRICULTURAL LOANS TO TOTAL LOANS GRANTED</b>					
<b>RATIO (%)</b>	<b>2.0</b>	<b>1.9</b>	<b>1.9</b>	<b>1.9</b>	<b>1.9</b>

Source: ACPC



**CROPS  
SUBSECTOR  
STATISTICS**

## CROPS STATISTICS

**Table 2.1 CROPS: VOLUME OF PRODUCTION, PHILIPPINES, 2010-2014**

ITEM	2010	2011	2012 R	2013 R	2014
			('000 mt)		
<b>TOTAL</b>	<b>75,583.2</b>	<b>87,294.5</b>	<b>88,008.1</b>	<b>85,739.5</b>	<b>87,008.2</b>
Palay	15,772.3	16,684.1	18,032.5	18,439.4	18,967.8
Corn	6,376.8	6,971.2	7,407.1	7,377.3	7,770.6
Coconut	15,510.3	15,244.6	15,863.8	15,354.3	14,696.3
Sugarcane	17,929.3	28,376.5	26,395.9	24,584.8	25,029.9
Banana	9,101.3	9,165.0	9,226.8	8,646.4	8,884.9
Pineapple	2,169.2	2,246.8	2,397.7	2,458.5	2,507.1
Coffee	94.5	88.5	88.9	78.6	75.5
Mango	825.7	788.1	768.4	816.4	885.0
Tobacco	40.5	44.9	48.1	53.8	61.4
Abaca	66.5	68.6	68.5	65.0	68.1
Peanut	29.6	29.7	29.1	29.1	29.2
Mongo	27.1	33.0	32.4	32.4	32.1
Cassava	2,101.5	2,209.7	2,223.2	2,361.6	2,540.3
Camote	541.3	516.3	516.9	528.2	519.9
Tomato	204.3	203.6	203.6	207.7	214.6
Garlic	9.6	9.1	8.8	9.0	9.0
Onion	135.4	128.4	124.9	134.2	203.7
Cabbage	129.0	125.3	126.4	127.5	128.0
Eggplant	208.2	208.0	211.9	219.9	225.6
Calamansi	188.3	182.6	178.5	164.1	160.7
Rubber	395.2	425.7	443.0	444.8	453.1
Others	3,727.1	3,544.8	3,611.7	3,606.4	3,545.7

Note: Batanes data included from 202-2014.

Source: PSA



**Table 2.2 CROPS: AREA PLANTED/HARVESTED,<sup>1/</sup>  
PHILIPPINES, 2010-2014**

ITEM	2010	2011	2012 R	2013 R	2014
	('000 has)				
<b>TOTAL</b>	<b>12,805.6</b>	<b>13,131.0</b>	<b>13,354.9</b>	<b>13,346.4</b>	<b>13,353.7</b>
Palay	4,354.2	4,536.6	4,690.1	4,746.1	4,739.7
Corn	2,499.0	2,544.6	2,593.9	2,563.7	2,611.4
Coconut	3,575.9	3,562.0	3,574.6	3,551.3	3,502.0
Sugarcane	354.9	439.7	433.3	437.1	432.0
Banana	449.4	450.1	454.3	446.0	442.8
Pineapple	58.5	58.5	58.5	60.8	61.6
Coffee	121.4	119.6	120.0	116.5	117.5
Mango	189.4	187.1	188.7	187.9	188.1
Tobacco	29.7	32.2	34.0	34.5	36.1
Abaca	135.1	139.0	138.5	138.4	134.8
Peanut	27.1	26.9	26.1	25.6	25.0
Mongo	40.1	45.3	44.4	43.6	43.0
Cassava	217.6	221.2	217.3	217.1	216.8
Camote	109.4	103.7	101.1	94.8	89.0
Tomato	17.7	17.6	17.3	17.2	16.7
Garlic	3.0	2.8	2.7	2.5	2.6
Onion	15.2	14.6	15.0	15.4	15.8
Cabbage	8.6	8.6	8.5	8.4	8.3
Eggplant	21.4	21.4	21.5	21.2	21.2
Calamansi	21.0	21.1	20.8	20.3	20.1
Rubber	138.7	161.6	176.2	185.5	217.7
Others	418.2	416.9	418.0	412.4	411.6

<sup>1/</sup> Area planted for permanent crops and area harvested for temporary crops.

Note: Batanes data included from 2012-2014.

Source: PSA

# CROPS STATISTICS

**Table 2.3 CROPS: VALUE OF PRODUCTION, PHILIPPINES, 2010-2014**

ITEM	2010	2011	2012R	2013R	2014
	(million pesos, at current prices)				
<b>TOTAL</b>	<b>673,210.3</b>	<b>802,720.5</b>	<b>797,109.4</b>	<b>814,730.8</b>	<b>927,314.4</b>
Palay	229,645.0	254,265.2	292,127.0	314,760.9	378,218.5
Corn	69,698.4	87,698.1	94,143.9	90,150.5	100,629.4
Coconut	81,273.9	120,889.8	88,837.2	82,299.3	104,931.6
Sugarcane	38,547.9	56,185.5	42,497.4	40,073.3	41,299.3
Banana	106,485.7	102,556.9	107,584.1	117,158.9	130,696.3
Pineapple	10,889.6	14,334.6	17,455.6	17,480.1	19,730.8
Coffee	5,502.2	6,190.9	6,156.4	5,596.0	5,785.5
Mango	17,892.3	18,598.7	19,540.7	19,201.3	19,356.0
Tobacco	2,544.7	3,008.1	3,483.4	3,827.5	4,333.8
Abaca	2,353.8	2,706.7	2,710.3	2,445.4	2,947.9
Peanut	877.3	929.7	994.5	1,028.1	1,073.1
Mongo	1,400.4	1,766.3	1,478.7	1,476.9	1,619.5
Cassava	12,020.3	14,142.0	15,717.8	18,065.9	16,664.1
Camote	5,472.1	5,886.3	6,140.8	6,455.2	7,158.3
Tomato	2,126.6	2,542.7	2,823.9	2,984.2	2,439.7
Garlic	716.8	916.4	801.5	375.4	935.6
Onion	2,695.4	4,754.7	3,888.1	3,428.5	4,887.8
Cabbage	929.8	2,251.8	1,655.4	1,841.8	1,944.2
Eggplant	2,446.8	4,216.0	3,600.0	3,428.6	4,112.1
Calamansi	2,380.6	4,407.0	2,898.0	2,440.0	2,890.1
Rubber	24,311.2	30,667.4	21,609.1	17,605.6	11,412.6
Others	52,999.5	63,805.9	60,965.5	62,607.5	64,248.1

Source: PSA

**Table 2.4 MAJOR CROPS: PERCENTAGE DISTRIBUTION OF PRODUCTION, BY REGION, PHILIPPINES, 2014**

REGION	PALAY	CORN	COCO-NUT	SUGAR-CANE
<b>PHILIPPINES ('000 mt)</b>	<b>18,967.8</b>	<b>7,770.6</b>	<b>14,696.3</b>	<b>25,029.9</b>
<b>LUZON (%)</b>	<b>59.44</b>	<b>42.30</b>	<b>24.62</b>	<b>13.58</b>
CAR	2.39	3.15	0.01	0.20
Ilocos Region	9.47	6.14	0.28	0.08
Cagayan Valley	13.26	23.89	0.51	2.27
Central Luzon	19.85	3.10	1.29	3.69
CALABARZON	2.14	0.96	9.39	6.30
MIMAROPA	5.70	1.39	5.49	0.00
Bicol Region	6.63	3.68	7.65	1.04
<b>VISAYAS (%)</b>	<b>17.79</b>	<b>7.99</b>	<b>13.61</b>	<b>68.50</b>
Western Visayas	10.82	4.74	2.45	58.03
Central Visayas	1.79	2.11	3.05	9.08
Eastern Visayas	5.18	1.13	8.11	1.39
<b>MINDANAO (%)</b>	<b>22.77</b>	<b>49.72</b>	<b>61.78</b>	<b>17.92</b>
Zamboanga Peninsula	3.46	2.87	11.29	0.00
Northern Mindanao	3.76	15.40	12.51	13.75
Davao Region	2.38	3.61	15.87	1.34
SOCCSKSARGEN	7.20	17.22	7.29	2.53
Caraga	3.03	1.61	5.59	a/
ARMM	2.94	9.00	9.23	0.31

a/ Less than 0.01

Source: PSA

## CROPS STATISTICS

**Table 2.4a MAJOR CROPS: PERCENTAGE DISTRIBUTION OF PRODUCTION, BY REGION, PHILIPPINES, 2014**

REGION	PINE-APPLE	BANANA	MANGO	COFFEE
<b>PHILIPPINES ('000 mt)</b>	<b>2,507.1</b>	<b>8,884.9</b>	<b>885.0</b>	<b>75.5</b>
<b>LUZON (%)</b>	<b>9.80</b>	<b>9.45</b>	<b>53.13</b>	<b>17.09</b>
CAR	0.03	0.30	0.41	6.96
Ilocos Region	0.01	0.49	30.63	0.11
Cagayan Valley	1.35	4.24	6.07	0.99
Central Luzon	0.06	0.66	7.79	2.18
CALABARZON	3.41	1.17	6.72	6.22
MIMAROPA	0.02	1.75	1.34	0.24
Bicol Region	4.92	0.84	0.18	0.40
<b>VISAYAS (%)</b>	<b>1.22</b>	<b>7.67</b>	<b>13.57</b>	<b>6.13</b>
Western Visayas	0.68	3.04	5.03	5.76
Central Visayas	0.28	2.18	8.48	0.29
Eastern Visayas	0.27	2.44	0.06	0.08
<b>MINDANAO (%)</b>	<b>88.98</b>	<b>82.88</b>	<b>33.30</b>	<b>76.78</b>
Zamboanga Peninsula	0.08	3.09	12.38	1.28
Northern Mindanao	55.55	20.05	5.11	7.18
Davao Region	1.12	37.91	6.06	15.63
SOCCSKSARGEN	32.08	13.54	6.75	37.11
Caraga	0.11	2.74	1.77	1.86
ARMM	0.04	5.56	1.23	13.72

Source: PSA

**Table 2.5 PALAY: PRODUCTION, AREA HARVESTED AND YIELD PER HECTARE, BY ECOSYSTEM, BY SEMESTER, PHILIPPINES, 2010-2014**

ITEM	2010	2011	2012	2013	2014
<b>PRODUCTION</b> (million mt)					
<b>TOTAL</b>	<b>15.77</b>	<b>16.68</b>	<b>18.03</b>	<b>18.44</b>	<b>18.97</b>
<i>Irrigated</i>	11.99	12.36	13.40	13.82	14.41
<i>Rainfed</i>	3.78	4.33	4.64	4.62	4.56
<b>JANUARY-JUNE</b>	<b>6.62</b>	<b>7.58</b>	<b>7.89</b>	<b>8.00</b>	<b>8.38</b>
<i>Irrigated</i>	5.53	6.15	6.37	6.56	6.87
<i>Rainfed</i>	1.09	1.43	1.52	1.43	1.51
<b>JULY-DECEMBER</b>	<b>9.15</b>	<b>9.11</b>	<b>10.14</b>	<b>10.44</b>	<b>10.59</b>
<i>Irrigated</i>	6.46	6.21	7.02	7.26	7.54
<i>Rainfed</i>	2.69	2.90	3.12	3.18	3.05
<b>AREA HARVESTED</b> (million ha)					
<b>TOTAL</b>	<b>4.35</b>	<b>4.54</b>	<b>4.69</b>	<b>4.75</b>	<b>4.74</b>
<i>Irrigated</i>	3.01	3.07	3.16	3.24	3.25
<i>Rainfed</i>	1.35	1.46	1.53	1.51	1.49
<b>JANUARY-JUNE</b>	<b>1.82</b>	<b>1.99</b>	<b>2.04</b>	<b>2.04</b>	<b>2.10</b>
<i>Irrigated</i>	1.37	1.48	1.49	1.53	1.54
<i>Rainfed</i>	0.45	0.52	0.55	0.52	0.56
<b>JULY-DECEMBER</b>	<b>2.54</b>	<b>2.54</b>	<b>2.65</b>	<b>2.70</b>	<b>2.64</b>
<i>Irrigated</i>	1.63	1.60	1.67	1.71	1.72
<i>Rainfed</i>	0.90	0.95	0.98	0.99	0.92
<b>YIELD PER HECTARE</b> (mt)					
<b>TOTAL</b>	<b>3.62</b>	<b>3.68</b>	<b>3.84</b>	<b>3.89</b>	<b>4.00</b>
<i>Irrigated</i>	3.99	4.02	4.24	4.27	4.43
<i>Rainfed</i>	2.81	2.95	3.04	3.06	3.07

## CROPS STATISTICS

**Table 2.5 PALAY: PRODUCTION, AREA HARVESTED ...**(Continued)

ITEM	2010	2011	2012	2013	2014
<b>JANUARY-JUNE</b>	<b>3.64</b>	<b>3.80</b>	<b>3.88</b>	<b>3.91</b>	<b>3.99</b>
<i>Irrigated</i>	4.03	4.17	4.28	4.30	4.47
<i>Rainfed</i>	2.44	2.76	2.78	2.77	2.69
<b>JULY-DECEMBER</b>	<b>3.61</b>	<b>3.58</b>	<b>3.82</b>	<b>3.86</b>	<b>4.01</b>
<i>Irrigated</i>	3.95	3.89	4.20	4.24	4.39
<i>Rainfed</i>	2.99	3.06	3.18	3.21	3.30

Source: PSA

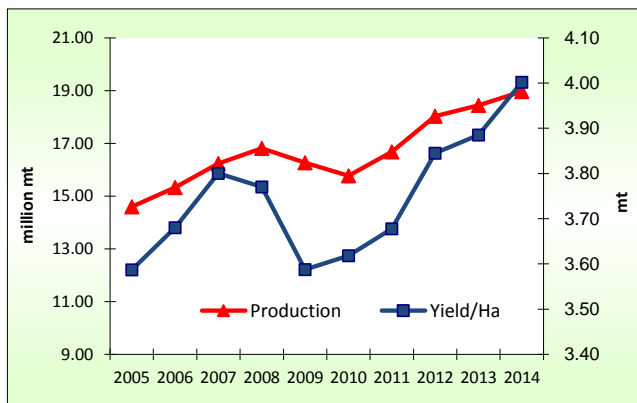


Figure 1. Palay: Production and Yield per Hectare, Philippines, 2005-2014

**Table 2.6 CORN: PRODUCTION, AREA HARVESTED AND YIELD PER HECTARE, BY CROPTYPE, BY SEMESTER, PHILIPPINES, 2010-2014**

ITEM	2010	2011	2012	2013	2014
<b>PRODUCTION</b> (million mt)					
<b>TOTAL</b>	<b>6.38</b>	<b>6.97</b>	<b>7.41</b>	<b>7.38</b>	<b>7.77</b>
<i>White</i>	2.17	2.15	2.17	2.13	2.26
<i>Yellow</i>	4.21	4.82	5.24	5.25	5.51
<b>JANUARY-JUNE</b>	<b>2.42</b>	<b>3.31</b>	<b>3.47</b>	<b>3.32</b>	<b>3.48</b>
<i>White</i>	0.75	0.88	0.89	0.79	0.81
<i>Yellow</i>	1.66	2.43	2.58	2.54	2.67
<b>JULY-DECEMBER</b>	<b>3.96</b>	<b>3.66</b>	<b>3.94</b>	<b>4.05</b>	<b>4.29</b>
<i>White</i>	1.42	1.27	1.28	1.34	1.46
<i>Yellow</i>	2.54	2.39	2.66	2.71	2.83
<b>AREA HARVESTED</b> (million ha)					
<b>TOTAL</b>	<b>2.50</b>	<b>2.54</b>	<b>2.59</b>	<b>2.56</b>	<b>2.61</b>
<i>White</i>	1.34	1.28	1.31	1.28	1.29
<i>Yellow</i>	1.16	1.26	1.28	1.29	1.32
<b>JANUARY-JUNE</b>	<b>0.97</b>	<b>1.10</b>	<b>1.11</b>	<b>1.08</b>	<b>1.10</b>
<i>White</i>	0.47	0.50	0.50	0.47	0.46
<i>Yellow</i>	0.50	0.60	0.61	0.60	0.63
<b>JULY-DECEMBER</b>	<b>1.53</b>	<b>1.44</b>	<b>1.48</b>	<b>1.49</b>	<b>1.52</b>
<i>White</i>	0.87	0.79	0.81	0.81	0.83
<i>Yellow</i>	0.66	0.66	0.67	0.68	0.69
<b>YIELD PER HECTARE</b> (mt)					
<b>TOTAL</b>	<b>2.55</b>	<b>2.74</b>	<b>2.86</b>	<b>2.88</b>	<b>2.98</b>
<i>White</i>	1.62	1.68	1.65	1.67	1.75
<i>Yellow</i>	3.63	3.82	4.09	4.08	4.17

# CROPS STATISTICS

**Table 2.6 CORN: PRODUCTION, AREA HARVESTED ...**(Continued)

ITEM	2010	2011	2012	2013	2014
<b>JANUARY-JUNE</b>	<b>2.50</b>	<b>3.01</b>	<b>3.12</b>	<b>3.09</b>	<b>3.18</b>
White	1.61	1.77	1.77	1.68	1.74
Yellow	3.33	4.02	4.24	4.19	4.23
<b>JULY-DECEMBER</b>	<b>2.59</b>	<b>2.54</b>	<b>2.66</b>	<b>2.72</b>	<b>2.83</b>
White	1.63	1.62	1.58	1.66	1.76
Yellow	3.85	3.64	3.95	3.99	4.11

Source: PSA

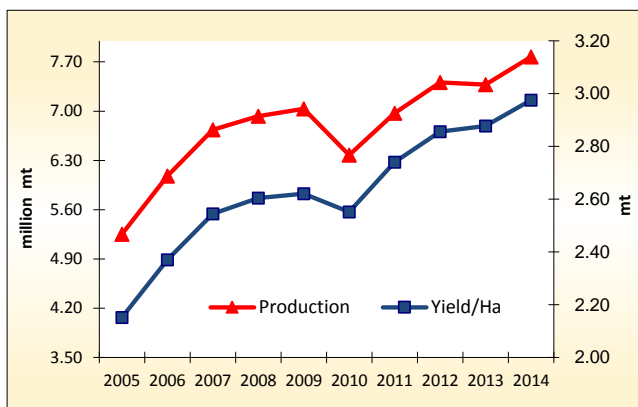


Figure 2. Corn: Production and Yield per Hectare, Philippines, 2005-2014





**LIVESTOCK AND  
POULTRY  
SUBSECTOR  
STATISTICS**

## LIVESTOCK & POULTRY STATISTICS

**Table 3.1 LIVESTOCK AND POULTRY: VOLUME OF PRODUCTION  
BY TYPE, PHILIPPINES, 2010-2014**

ITEM	2010	2011	2012	2013	2014P
	('000 mt)				
<b>LIVESTOCK</b> (liveweight)	<b>2,392.2</b>	<b>2,438.8</b>	<b>2,464.5</b>	<b>2,507.0</b>	<b>2,532.5</b>
Carabao	148.0	147.5	142.7	141.5	143.0
Cattle	251.7	256.3	254.0	258.5	261.3
Hog	1,898.2	1,940.4	1,973.6	2,012.2	2,032.3
Goat	78.5	78.2	75.7	75.4	76.1
Dairy	15.9	16.5	18.5	19.5	19.7
<b>POULTRY</b> (liveweight)	<b>1,386.1</b>	<b>1,447.4</b>	<b>1,513.3</b>	<b>1,589.5</b>	<b>1,606.4</b>
Chicken	1,353.1	1,414.3	1,479.4	1,555.1	1,571.8
Duck	33.0	33.2	33.8	34.5	34.6
<b>Egg</b>	<b>424.0</b>	<b>441.1</b>	<b>460.8</b>	<b>468.8</b>	<b>457.2</b>
<i>Chicken</i>	387.3	403.4	421.1	427.7	415.7
<i>Duck</i>	36.7	37.7	39.7	41.1	41.5

Source: PSA

**Table 3.2 LIVESTOCK AND POULTRY: VALUE OF PRODUCTION,  
BY TYPE, PHILIPPINES, 2010-2014**

ITEM	2010	2011	2012R	2013R	2014
	(million pesos, at current prices)				
<b>LIVESTOCK</b> (liveweight)	<b>210,465.6</b>	<b>212,326.0</b>	<b>214,082.9</b>	<b>233,997.8</b>	<b>247,757.3</b>
Carabao	10,044.6	10,080.0	9,966.1	10,335.1	10,740.1
Cattle	20,583.1	21,461.8	21,438.5	22,530.0	23,641.6
Hog	172,049.2	172,574.7	174,408.8	192,484.2	204,104.9
Goat	7,306.8	7,710.5	7,708.2	8,054.9	8,649.1
Dairy	481.8	498.9	561.3	593.7	621.5
<b>POULTRY</b> (liveweight)	<b>151,531.8</b>	<b>158,734.9</b>	<b>168,231.4</b>	<b>176,482.8</b>	<b>189,567.8</b>
Chicken	112,512.8	118,320.3	124,878.7	131,668.6	142,951.1
Duck	2,499.6	2,452.9	2,577.0	2,662.6	2,807.0
Chicken eggs	33,659.9	35,046.8	37,588.9	38,629.0	40,147.6
Duck eggs	2,859.6	2,914.9	3,186.8	3,522.6	3,662.0

Source: PSA

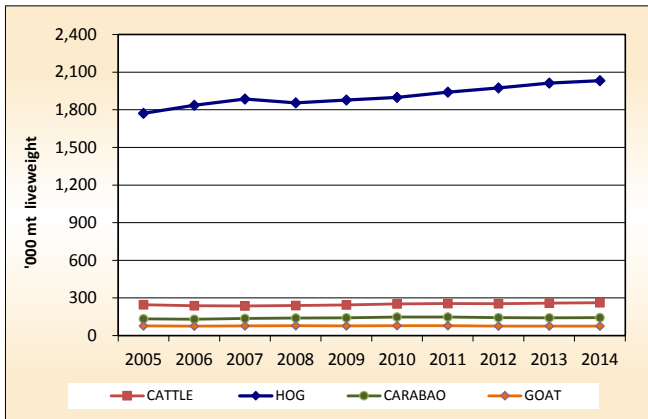


Figure 3a. Livestock: Volume of Production by Type, Philippines, 2005-2014

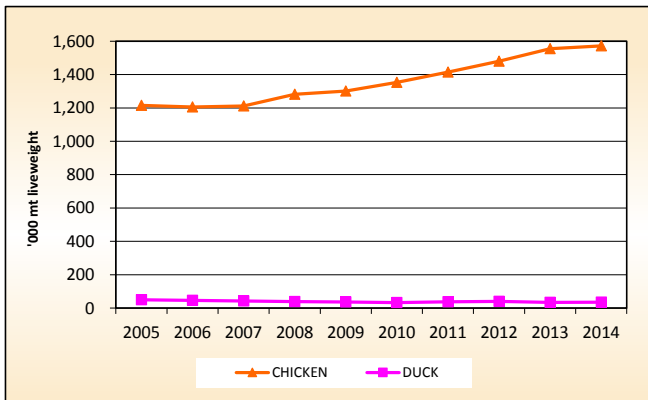


Figure 3b. Poultry: Volume of Production by Type, Philippines, 2005-2014

## LIVESTOCK & POULTRY STATISTICS

**Table 3.3 LIVESTOCK AND POULTRY: INVENTORY BY TYPE, PHILIPPINES, AS OF JANUARY 1, 2010-2015**

ITEM	2010	2011	2012	2013	2014	2015P
<b>LIVESTOCK</b> ('000 head)						
Carabao	3,270	3,075	2,964	2,913	2,847 R	2,855
<i>Dairy</i>	13.9	14.7	15.7	15.4	16.8	17.3
Cattle	2,571	2,518	2,493	2,498	2,512 R	2,534
<i>Dairy</i>	16.9	17.4	19.3	21.1	21.6	22.5
Hog	13,398	12,303	11,863	11,843	11,802	12,000
Goat	4,178	3,882	3,715	3,694	3,696 R	3,674
<i>Dairy</i>	1.2	1.4	1.6	1.6	1.9	2.0
<b>POULTRY</b> ('000 birds)						
Chicken	158,984	162,813	164,192	166,386	167,671	176,469
<i>Broiler</i>	52,213	54,754	57,284	59,196	61,582	66,617
<i>Layer</i>	28,639	31,444	31,524	32,003	30,007	31,254
<i>Native</i> <sup>1/</sup>	78,132	76,615	75,384	75,188	76,082	78,598
Duck	10,268	10,126	10,011	10,135 R	9,886 R	10,066

<sup>1/</sup> Includes gamefowls in the backyard

Source: PSA

**Table 3.4 LIVESTOCK AND POULTRY: TOTAL NUMBER OF HEAD/ BIRDS SLAUGHTERED/DRESSED BY TYPE, PHILIPPINES, 2010-2014**

ITEM	2010	2011	2012	2013	2014
<b>NUMBER OF ANIMALS SLAUGHTERED</b> ('000 head)					
Carabao	485	481	462	457	461
Cattle	831	836	831	844	859
Hog	24,246	24,333	24,500	24,919	25,061
Goat	3,167	3,179	3,101	3,118	3,161
<b>NUMBER OF BIRDS DRESSED</b> ('000 birds)					
Chicken <sup>2/</sup>	777,952	824,058	888,938 R	945,120 R	969,973
Duck	14,025	14,388	15,075 R	15,396 R	15,417

<sup>2/</sup> Consists of dressed broiler, native chicken and culled layers only

Source: PSA and NMIS

**Table 3.5 LIVESTOCK: PERCENTAGE DISTRIBUTION OF PRODUCTION BY REGION, PHILIPPINES, 2014**

REGION	CARABAO	CATTLE	HOG	GOAT
<b>PHILIPPINES</b> ('000 mt)	<b>143.0</b>	<b>261.3</b>	<b>2,032.3</b>	<b>76.1</b>
<b>LUZON</b> (%)	<b>36.8</b>	<b>45.4</b>	<b>52.6</b>	<b>40.1</b>
CAR	2.3	1.7	1.4	1.1
Ilocos Region	7.1	10.6	4.0	13.7
Cagayan Valley	7.4	5.6	3.3	2.3
Central Luzon	4.8	7.0	18.7	11.3
CALABARZON	4.9	10.0	15.5	4.7
MIMAROPA	4.7	4.5	3.7	3.1
Bicol Region	5.6	6.0	6.0	3.9
<b>VISAYAS</b> (%)	<b>27.5</b>	<b>19.5</b>	<b>20.3</b>	<b>22.7</b>
Western Visayas	14.8	9.2	8.8	9.7
Central Visayas	4.7	9.4	7.7	11.8
Eastern Visayas	7.9	0.9	3.8	1.2
<b>MINDANAO</b> (%)	<b>35.7</b>	<b>35.1</b>	<b>27.1</b>	<b>37.3</b>
Zamboanga Peninsula	5.1	4.7	3.9	4.4
Northern Mindanao	6.2	14.5	8.1	9.6
Davao Region	8.4	4.8	6.7	7.8
SOCCKSARGEN	8.6	6.9	5.9	8.2
Caraga	2.0	0.6	2.0	1.2
ARMM	5.4	3.7	0.5	6.1

Source: PSA

## LIVESTOCK & POULTRY STATISTICS

**Table 3.6 POULTRY: PERCENTAGE DISTRIBUTION OF PRODUCTION BY REGION, PHILIPPINES, 2014**

REGION	CHICKEN	CHICKEN EGGS	DUCK	DUCK EGGS
<b>PHILIPPINES</b> ('000 mt)	<b>1,571.8</b>	<b>415.7</b>	<b>34.6</b>	<b>41.5</b>
<b>LUZON (%)</b>	<b>67.6</b>	<b>62.2</b>	<b>64.0</b>	<b>57.1</b>
CAR	0.5	0.8	2.4	2.0
Ilocos Region	5.2	3.1	5.2	3.5
Cagayan Valley	3.7	2.8	6.2	8.5
Central Luzon	36.3	21.2	43.7	33.7
CALABARZON	19.0	29.0	1.9	5.1
MIMAROPA	0.7	1.1	1.0	1.4
Bicol Region	2.3	4.1	3.5	2.9
<b>VISAYAS (%)</b>	<b>13.2</b>	<b>16.1</b>	<b>13.9</b>	<b>13.4</b>
Western Visayas	5.4	7.5	9.1	11.2
Central Visayas	5.9	8.0	0.7	0.8
Eastern Visayas	1.9	0.5	4.0	1.4
<b>MINDANAO (%)</b>	<b>19.2</b>	<b>21.7</b>	<b>22.2</b>	<b>29.5</b>
Zamboanga Peninsula	1.7	2.2	0.9	2.7
Northern Mindanao	8.9	9.8	4.7	9.3
Davao Region	4.4	5.8	3.1	2.4
SOCCKSARGEN	3.1	2.2	10.2	9.4
Caraga	0.8	1.0	0.5	2.0
ARMM	0.3	0.8	2.8	3.8

Source: PSA



**FISHERIES  
SUBSECTOR  
STATISTICS**

# FISHERIES STATISTICS

**Table 4.1 FISHERIES: VOLUME OF PRODUCTION, PHILIPPINES, 2010-2014**

ITEM	2010	2011	2012	2013	2014
	('000 mt)				
<b>TOTAL</b>	<b>5,159.5</b>	<b>4,973.5</b>	<b>4,865.1</b>	<b>4,705.4</b>	<b>4,689.1</b>
<b>Commercial</b>	<b>1,242.1</b>	<b>1,032.8</b>	<b>1,042.3</b>	<b>1,067.6</b>	<b>1,107.2</b>
<b>Municipal</b>	<b>1,371.4</b>	<b>1,332.6</b>	<b>1,280.8</b>	<b>1,264.4</b>	<b>1,244.3</b>
Marine	1,184.1	1,138.9	1,083.4	1,062.1	1,029.4
Inland	187.3	193.7	197.4	202.3	214.9
<b>Aquaculture</b>	<b>2,546.0</b>	<b>2,608.1</b>	<b>2,542.0</b>	<b>2,373.4</b>	<b>2,337.6</b>
Brackishwater Fishpond <sup>1/</sup>	304.3	311.1	320.2	327.4	322.7
Freshwater Fishcage/pen	165.1	164.0	165.4	170.5	150.4
Freshwater Fishpond <sup>2/</sup>	143.2	142.9	144.7	148.3	148.9
Marine Fishcage/pen	88.7	105.4	114.3	123.8	125.0
Others	1,844.7	1,884.7	1,797.4	1,603.4	1,590.6
Oyster	22.5	21.5	20.6	22.1	22.3
Mussel	20.9	22.4	25.7	22.9	18.8
Seaweed	1,801.3	1,840.8	1,751.1	1,558.4	1,549.5

<sup>1/</sup> Includes brackishwater pen/cage

<sup>2/</sup> Includes small farm reservoir and rice fish

Source: PSA

**Table 4.2 FISHERIES: VALUE OF PRODUCTION, PHILIPPINES, 2010-2014**

ITEM	2010	2011	2012	2013	2014
	(million pesos, at current prices)				
<b>TOTAL</b>	<b>221,051.0</b>	<b>224,695.0</b>	<b>237,711.4</b>	<b>244,551.7</b>	<b>241,943.8</b>
<b>Commercial</b>	<b>60,457.0</b>	<b>58,623.0</b>	<b>65,894.2</b>	<b>69,922.5</b>	<b>66,189.8</b>
<b>Municipal</b>	<b>77,736.5</b>	<b>80,075.6</b>	<b>79,527.3</b>	<b>80,898.0</b>	<b>81,805.0</b>
Marine	70,199.0	72,028.1	70,982.7	71,909.3	71,925.1
Inland	7,537.5	8,047.5	8,544.6	8,988.7	9,879.9
<b>Aquaculture</b>	<b>82,857.5</b>	<b>85,996.4</b>	<b>92,289.9</b>	<b>93,731.2</b>	<b>93,949.0</b>

Source: PSA



**Table 4.3 FISHERIES: PERCENTAGE DISTRIBUTION OF PRODUCTION BY REGION. PHILIPPINES, 2014**

REGION	MARINE	INLAND	AQUA-CULTURE
<b>PHILIPPINES</b> (000 mt)	2,136.6	202.3	2,337.6
<b>LUZON</b> (%)	34.7	66.0	43.3
NCR - Metro Manila	5.9	0.0	0.1
CAR	-	0.5	0.1
Ilocos Region	1.6	1.0	5.9
Cagayan Valley	1.6	5.8	0.6
Central Luzon	1.6	6.1	9.9
<b>CALABARZON</b>	5.1	49.0	7.6
<b>MIMAROPA</b>	9.1	0.5	15.7
Bicol Region	9.8	3.0	3.4
<b>VISAYAS</b> (%)	19.3	4.0	13.8
Western Visayas	10.5	3.5	7.7
Central Visayas	3.8	0.1	4.8
Eastern Visayas	5.0	0.4	1.3
<b>MINDANAO</b> (%)	46.0	30.0	42.9
Zamboanga Peninsula	16.4	0.4	9.5
Northern Mindanao	3.6	1.9	3.3
Davao Region	1.2	0.1	1.2
<b>SOCCSKSARGEN</b>	12.9	11.7	0.9
Caraga	2.8	2.1	0.9
<b>ARMM</b>	9.1	13.8	27.1

Source: PSA

# FISHERIES STATISTICS

**Table 4.4 FISHERIES: VOLUME OF PRODUCTION BY MAJOR SPECIES, PHILIPPINES, 2010-2014**

SECTOR/ MAJOR SPECIES	2010	2011	2012	2013	2014
	('000 mt)				
<b>MARINE SPECIES</b>	<b>2,426.2</b>	<b>2,171.8</b>	<b>2,125.7</b>	<b>2,129.7</b>	<b>2,136.6</b>
Indian sardines	334.0	232.9	246.0	229.2	256.1
Roundscad	268.2	239.6	233.5	270.8	260.6
Skipjack	228.2	197.4	206.5	212.2	233.9
Yellowfin tuna	147.3	123.0	125.3	130.1	139.9
Frigate tuna	149.6	132.6	131.7	134.2	134.1
Fimbriated sardines	108.0	98.8	95.5	89.1	93.3
Big-eyed scad	121.5	119.2	114.9	117.1	116.4
Indian mackerel	91.9	84.3	78.8	85.2	78.2
Anchovies	80.2	75.9	71.2	68.4	71.9
Squid	56.0	56.8	54.9	57.2	55.7
Slipmouth	64.1	61.1	57.0	50.8	50.6
Eastern little tuna	38.2	36.4	35.8	36.1	35.5
Indo-pacific mackerel	55.7	55.3	46.6	43.2	39.6
Threadfin bream	45.8	48.1	46.3	42.1	38.8
Crevalle	43.5	37.9	37.8	37.3	35.8
Blue crab	29.8	29.3	26.1	26.2	27.2
Cavalla	32.7	32.2	31.7	29.8	28.0
Flying fish	25.9	23.2	21.9	20.5	19.4
Siganid	25.9	25.7	26.1	28.2	26.4
Snapper	21.2	22.3	20.2	20.4	18.5
Bigeye tuna	11.6	9.6	12.5	11.8	11.2
Other species	446.9	430.2	405.7	389.6	365.5
<b>AQUACULTURE SPECIES</b>	<b>2,546.0</b>	<b>2,608.1</b>	<b>2,542.0</b>	<b>2,373.4</b>	<b>2,337.6</b>
Seaweed	1801.3	1840.8	1,751.1	1,558.4	1,549.6
Milkfish	349.4	372.6	386.7	401.1	390.2
Tilapia	258.8	257.4	260.5	268.8	259.2
Tiger prawn	48.2	47.5	48.2	49.5	47.8
Carp	16.7	17.3	17.7	18.3	16.8
Oyster	22.5	21.5	20.6	22.1	22.4
Mussel	20.9	22.4	25.7	22.9	18.8
Mud crab	14.4	15.7	16.4	15.8	16.2

**Table 4.4 FISHERIES: VOLUME OF PRODUCTION** ..(Continued)

SECTOR/ MAJOR SPECIES	2010	2011	2012	2013	2014
	('000 mt)				
Catfish	3.0	3.1	3.6	3.8	3.6
Other species	10.8	9.8	11.5	12.7	13.1
<b>INLAND SPECIES</b>	<b>187.3</b>	<b>193.8</b>	<b>197.4</b>	<b>202.3</b>	<b>214.9</b>
Snail	53.4	54.6	55.2	55.2	51.8
Tilapia	44.9	45.8	47.4	48.9	54.2
Carp	12.3	13.9	14.7	15.4	15.6
Mudfish	9.9	10.7	10.7	10.9	11.2
Gourami	6.2	7.3	6.6	6.8	6.4
Freshwater goby	5.6	5.6	5.4	5.3	5.7
Freshwater catfish	5.1	5.5	5.8	6.2	6.2
Freshwater shrimp	4.9	5.1	5.3	5.4	5.4
Freshwater catfish	2.0	1.9	1.9	1.9	1.8
Other fish species	30.3	29.0	29.7	32.8	43.5
Other crustaceans	5.2	5.8	5.4	5.0	5.4
Other molluscs	7.5	8.6	9.3	8.5	7.7

Source: PSA

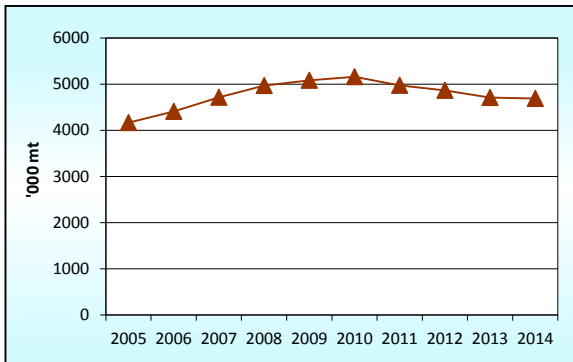


Figure 4. Fisheries: Volume of Production, Philippines, 2005-2014

# FISHERIES STATISTICS

**Table 4.5 AQUACULTURE: VALUE OF PRODUCTION BY CULTURE ENVIRONMENT AND SPECIES, PHILIPPINES, 2010-2014**

ENVIRONMENT/ SPECIES	2010	2011	2012	2013	2014
	(million pesos, at current prices)				
<b>ALL TYPES OF ENVIRONMENT</b>	<b>82,857.5</b>	<b>85,996.4</b>	<b>92,289.9</b>	<b>93,731.2</b>	<b>93,949.0</b>
Brackishwater					
Fishpond <sup>1/</sup>	41,129.1	43,520.4	46,491.3	48,552.4	48,713.7
Freshwater					
Fishcage/pen	10,412.1	10,234.8	11,713.4	11,407.3	10,534.9
Freshwater					
Fishpond <sup>2/</sup>	8,947.3	9,126.2	9,967.8	10,862.8	11,138.7
Marine					
Fishcage/pen	10,040.2	11,310.6	13,917.4	12,568.0	12,641.7
Others <sup>3/</sup>	12,328.8	11,804.4	10,200.0	10,340.7	10,920.0
<b>ALL SPECIES</b>	<b>82,857.5</b>	<b>85,996.4</b>	<b>92,289.9</b>	<b>93,731.2</b>	<b>93,949.0</b>
Seaweed	11,974.7	11,391.1	9,776.3	9,903.2	10,517.7
Milkfish	27,673.9	30,620.9	34,847.4	35,358.7	35,606.8
Tilapia	16,529.1	16,570.7	18,506.0	19,215.6	19,395.4
Tiger prawn	18,224.2	18,545.6	18,968.4	19,718.9	19,299.1
Mussel	195.8	231.4	266.1	252.6	222.7
Oyster	158.2	181.8	157.6	170.9	179.5
Carp	369.9	507.3	563.7	612.4	468.2
Mud crab	3,900.6	4,388.2	4,822.4	4,799.9	5,135.3
Catfish	245.5	286.3	338.2	359.3	344.2
Other species	3,585.6	3,273.0	4,043.8	3,339.7	2,780.1

<sup>1/</sup> Includes brackishwater pen/cage

<sup>2/</sup> Includes small farm reservoir and rice fish

<sup>3/</sup> Others include seaweeds, mussels and oyster

Source: PSA



# **PRODUCTION COSTS AND RETURNS**

## PRODUCTION COSTS AND RETURNS

**Table 5.1 ALL PALAY: PRODUCTION COSTS AND RETURNS BY SEASON, PHILIPPINES, 2014P**

ITEM	DRY	WET	AVERAGE
	(pesos per hectare)		
Gross Returns	80,379	80,320	80,360
Cash Costs	20,914	20,442	20,671
Non-Cash Costs	16,827	17,518	17,207
Imputed Costs	10,670	11,447	11,107
Total Costs	48,411	49,407	48,985
Net Returns	31,968	30,913	31,375
.....			
Net Profit-Cost Ratio	0.66	0.63	0.64
Cost Per Kilogram (pesos)	12.12	12.33	12.24

Source: PSA

**Table 5.1a IRRIGATED PALAY: PRODUCTION COSTS AND RETURNS BY SEASON, PHILIPPINES, 2014P**

ITEM	DRY	WET	AVERAGE
	(pesos per hectare)		
Gross Returns	89,997	87,956	88,914
Cash Costs	23,858	22,928	23,385
Non-Cash Costs	18,538	18,647	18,577
Imputed Costs	10,881	11,764	11,351
Total Costs	53,277	53,339	53,313
Net Returns	36,720	34,617	35,601
.....			
Net Profit-Cost Ratio	0.69	0.65	0.67
Cost Per Kilogram (pesos)	11.91	12.15	12.04

Source: PSA

**Table 5.1b NON-IRRIGATED PALAY: PRODUCTION COSTS AND RETURNS BY SEASON, PHILIPPINES, 2014P**

ITEM	DRY	WET	AVERAGE
	(pesos per hectare)		
Gross Returns	54,143	66,112	61,626
Cash Costs	14,377	16,436	15,612
Non-Cash Costs	12,556	15,553	14,401
Imputed Costs	10,233	10,935	10,665
Total Costs	37,166	42,924	40,678
Net Returns	16,977	23,188	20,948
.....			
Net Profit-Cost Ratio	0.46	0.54	0.51
Cost Per Kilogram (pesos)	13.81	13.01	13.25

Source: PSA

**Table 5.2 CORN: PRODUCTION COSTS AND RETURNS BY TYPE, PHILIPPINES, 2014P**

ITEM	WHITE	YELLOW	ALL
	(pesos per hectare)		
Gross Returns	24,454	53,238	39,045
Cash Costs	6,685	28,105	14,006
Non-Cash Costs	1,717	2,895	2,196
Imputed Costs	8,120	8,302	8,155
Total Costs	16,522	39,302	24,357
Net Returns	7,932	13,936	14,688
.....			
Net Profit-Cost Ratio	0.48	0.35	0.60
Cost Per Kilogram (pesos)	9.42	9.43	8.18

Source: PSA

## PRODUCTION COSTS AND RETURNS

**Table 5.3 OTHER MAJOR CROPS: PRODUCTION COSTS AND RETURNS, PHILIPPINES, 2014P**

ITEM	MANGO <sup>1/</sup>	PINEAPPLE	COFFEE <sup>1/</sup>
	(pesos per hectare)		
Gross Returns	110,283	319,674	48,355
Cash Costs	44,400	64,780	21,419
Non-Cash Costs	4,816	858	1,084
Imputed Costs	24,202	13,952	8,600
Total Costs	73,418	79,590	31,103
Net Returns	36,865	240,084	17,252
.....			
Net Profit-Cost Ratio	0.50	3.02	0.55
Cost Per Kilogram (pesos)	18.02	1.96	48.45

<sup>1/</sup> Cost of production refers to maintenance cost.

Source: PSA

**Table 5.3a OTHER MAJOR CROPS: PRODUCTION COSTS AND RETURNS, PHILIPPINES, 2014P**

ITEM	ONION		TOMATO
	Red	Multiplier	
(pesos per hectare)			
Gross Returns	256,827	195,817	163,366
Cash Costs	99,807	60,463	70,008
Non-Cash Costs	8,673	35,592	2,840
Imputed Costs	19,942	21,869	17,378
Total Costs	128,422	117,924	90,226
Net Returns	128,405	77,893	73,140
.....			
Net Profit-Cost Ratio	1.00	0.66	0.81
Cost Per Kilogram (pesos)	8.52	14.07	7.07

Source: PSA





**PRICE  
STATISTICS**

## PRICE STATISTICS

**Table 6.1 CONSUMER PRICE INDEX <sup>1/</sup>, PHILIPPINES, 2010-2014**

ITEM	2010	2011	2012	2013	2014P
<b>ALL ITEMS</b>	<b>120.5</b>	<b>126.1</b>	<b>130.1</b>	<b>133.9</b>	<b>139.5</b>
Food and Non-Alcoholic Beverages	129.5	136.6	139.8	143.8	153.4
Alcoholic Beverages and Tobacco	116.4	122.6	128.7	167.1	175.7
Clothing and Footwear	114.2	118.4	123.9	128.4	132.9
Housing, Water, Electricity, Gas and Other Fuels	114.6	120.3	125.8	127.9	130.8
Furnishings, Household Equipment and Routine Maintenance of the House	114.0	116.8	121.1	125.1	128.5
Health	120.4	124.3	128.1	131.9	136.4
Transport	115.6	122.9	125.5	126.5	127.7
Communication	92.6	92.4	92.5	92.7	92.7
Recreation and Culture	105.2	106.7	109.5	112.0	114.1
Education	124.4	130.3	136.2	142.5	149.5
Restaurants and Miscellaneous Goods and Services	116.0	119.3	123.2	126.1	128.5

<sup>1/</sup> 2006 as base year

Source: PSA

**Table 6.2 PRODUCER PRICE INDEX <sup>1/</sup>, PHILIPPINES, 2010-2014**

ITEM	2010	2011	2012	2013	2014P
<b>ALL ITEMS</b>	<b>131.5</b>	<b>141.6</b>	<b>137.9</b>	<b>141.0</b>	<b>156.7</b>
Cereals	137.3	143.8	151.3	156.1	186.2
Vegetables & Legumes	100.3	134.0	121.4	121.1	118.0
Rootcrops and Tubers	114.8	129.1	137.9	147.2	131.0
Fruits	125.7	138.3	142.3	146.9	156.1
Commercial Crops	155.1	192.2	145.1	138.6	170.3
Livestock	130.4	128.8	128.3	138.0	146.3
Poultry	121.6	122.8	122.9	124.4	132.0
Fishery	118.6	120.4	126.3	127.6	131.5

<sup>1/</sup> 2006 as base year

Source: PSA

**Table 6.3 CEREALS: AVERAGE DOMESTIC AND WORLD PRICES BY TYPE, PHILIPPINES, 2010-2014**

ITEM	2010	2011	2012	2013	2014P
<b>DOMESTIC PRICE</b> (pesos per kilogram)					
<b>Palay/Rice, Well milled</b>					
<i>Farm</i>	14.87	15.17	16.22	16.93	20.07
<i>Wholesale</i>	31.45	32.06	32.82	34.49	39.51
<i>Retail</i>	34.34	34.73	35.30	36.87	42.32
<b>Corngrain</b>					
<i>Corngrain, white</i>					
<i>Farm</i>	11.00	14.40	13.35	13.81	13.90
<i>Wholesale</i>	15.05	16.41	15.53	15.43	14.79
<i>Retail</i>	19.55	19.07	19.72	18.97	21.88
<i>Corngrain, yellow</i>					
<i>Farm</i>	11.26	11.95	12.42	11.62	12.73
<i>Wholesale</i>	14.41	15.13	15.78	15.93	14.31
<i>Retail</i>	19.26	19.80	21.51	22.04	20.76
<b>WORLD PRICE</b> (US dollar per kilogram)					
<b>Cereals</b>					
Rice					
<i>5% brokens</i>	0.49	0.54	0.56	0.51	0.42
<i>25% brokens</i>	0.44	0.51	0.54	0.47	0.38
Corn					
<i>Yellow</i>	0.19	0.29	0.30	0.26	0.19

Sources: PSA and World Bank

## PRICE STATISTICS

**Table 6.4** SELECTED CROPS: AVERAGE ANNUAL PRICES,  
PHILIPPINES, 2010-2014

ITEM	2010	2011	2012	2013	2014P
	(pesos per kilogram)				
<b>Coconut</b>					
Copra ( <i>corriente</i> )					
Farm	21.33	32.53	19.28	15.88	24.67
Wholesale	19.14	28.00	16.66	13.16	19.61
Matured nuts					
Farm	5.34	8.05	5.63	5.30	7.14
Wholesale	12.80	18.87	18.44	16.34	17.96
Retail	14.26	19.51	18.83	17.62	20.53
Young nuts					
Farm	5.33	6.71	7.03	6.96	7.93
<b>Coffee, dry beans</b>					
Robusta					
Farm	56.45	71.71	69.27	67.84	76.10
Wholesale	50.84	76.52	-	70.15	-
Arabica					
Farm	67.57	69.25	71.14	83.94	82.09
Excelsa					
Farm	48.68	56.14	60.68	65.64	68.35
Wholesale	59.51	-	-	-	-
<b>Rubber (<i>cup lump</i>)</b>					
Farm	61.49	75.42	50.06	40.35	26.37
Wholesale	58.54	-	-	-	-
<b>Banana</b>					
Bungulan					
Farm	9.09	7.27	7.80	8.22	9.93
Wholesale	6.65	6.72	6.86	7.28	13.28
Latundan					
Farm	9.22	9.41	9.46	10.12	11.42
Wholesale	15.60	16.80	15.80	17.30	22.88
Retail	20.00	21.20	21.60	23.50	33.02

**Table 6.4** SELECTED CROPS: AVERAGE ANNUAL ..(Continued)

ITEM	2010	2011	2012	2013	2014P
	(pesos per kilogram)				
<b>Lakatan</b>					
<i>Farm</i>	14.26	13.74	14.27	16.78	18.32
<i>Wholesale</i>	24.30	25.83	25.74	28.08	38.44
<i>Retail</i>	29.52	31.50	32.58	37.17	49.02
<b>Saba</b>					
<i>Farm</i>	6.87	6.51	7.01	8.35	8.34
<i>Wholesale</i>	11.34	12.06	13.05	13.77	16.01
<i>Retail</i>	16.02	16.11	16.74	17.64	24.24
<b>Pineapple, Hawaiian</b>					
<i>Farm</i>	5.02	6.35	7.25	7.08	7.86
<i>Wholesale</i>	9.85	9.76	10.25	10.81	9.72
<i>Retail</i>	14.00	15.20	16.13	16.69	16.86
<b>Mango, Carabao</b>					
<i>Farm</i>	28.22	29.23	28.94	28.64	30.42
<i>Wholesale</i>	43.36	46.16	47.96	48.79	51.34
<i>Retail</i>	62.35	65.48	66.11	66.53	72.30
<b>Cassava</b>					
<i>Farm</i>	5.73	6.40	7.09	7.63	6.52
<i>Wholesale</i>	7.83	7.66	7.77	8.61	8.49
<b>Camote</b>					
<i>Farm</i>	10.03	11.39	11.87	12.19	13.72
<i>Wholesale</i>	14.39	14.72	15.77	17.40	18.48
<i>Retail</i>	22.70	24.20	26.28	28.15	29.48

Source: PSA

## PRICE STATISTICS

**Table 6.5** SELECTED LIVESTOCK AND POULTRY: AVERAGE ANNUAL PRICES, PHILIPPINES, 2010-2014

ITEM	2010	2011	2012	2013	2014P
	(pesos per kilogram)				
<b>LIVESTOCK</b> <sup>2/</sup>					
Carabao					
<i>Farm (liveweight)</i>	67.95	68.31	69.75	72.98	74.99
<i>Wholesale selling</i>	61.93	60.76	62.46	64.34	65.16
Cattle					
<i>Farm (liveweight)</i>	81.79	83.73	84.36	87.12	90.40
<i>Wholesale selling</i>	76.30	74.16	75.56	76.90	78.82
<i>Retail (beef lean meat)</i>	222.51	226.95	229.4	233.62	240.05
Hog					
<i>Farm (liveweight)</i>	90.56	89.08	88.26	95.71	100.48
<i>Wholesale selling</i>	91.76	96.13	89.71	99.90	109.02
<i>Retail (pork lean meat)</i>	173.90	173.86	172.93	179.36	191.59
Goat					
<i>Farm</i>	93.17	98.58	101.88	106.74	113.51
<i>Wholesale selling</i>	93.88	90.95	92.22	96.37	99.36
<b>POULTRY</b>					
Chicken ( <i>broiler</i> ) <sup>2/</sup>					
<i>Farm</i>	94.64	95.23	95.89	87.12	91.06
<i>Wholesale</i> <sup>3/</sup>	77.32	82.74	84.18	81.43	95.60
<i>Retail</i>	113.08	118.05	117.07	112.86	119.80
Duck <sup>2/</sup>					
<i>Farm</i>	86.12	84.46	87.66	90.85	93.58

<sup>2/</sup> Backyard

<sup>3/</sup> Metro Manila

Source: PSA

**Table 6.6** SELECTED FISH SPECIES: AVERAGE ANNUAL PRICES,  
PHILIPPINES, 2010-2014

ITEM	2010	2011	2012	2013	2014P
	(pesos per kilogram)				
<b>FISHERY PRODUCTS</b>					
Bangus ( <i>Milkfish</i> )					
<i>Wholesale</i>	90.69	92.32	104.49	100.46	101.47
<i>Retail</i>	112.56	112.86	125.01	123.84	123.51
Dilis ( <i>Anchovies</i> )					
<i>Wholesale</i>	44.45	47.83	54.30	50.42	49.01
<i>Retail</i>	74.22	79.65	83.77	84.05	86.26
Galunggong ( <i>Roundscad</i> )					
<i>Wholesale</i>	64.25	77.58	83.14	82.29	86.30
<i>Retail</i>	87.45	100.47	107.68	108.02	113.84
Sapsap ( <i>Slipmouth</i> )					
<i>Wholesale</i>	66.13	73.02	87.52	83.80	90.85
<i>Retail</i>	112.51	115.64	126.10	128.14	132.03
Tilapia					
<i>Wholesale</i>	67.89	73.51	75.36	74.07	78.70
<i>Retail</i>	87.61	90.80	95.96	98.17	102.69
Tulingan ( <i>Frigate Tuna</i> )					
<i>Wholesale</i>	77.97	88.33	89.36	88.64	94.00
<i>Retail</i>	92.31	103.08	110.4	111.57	113.47

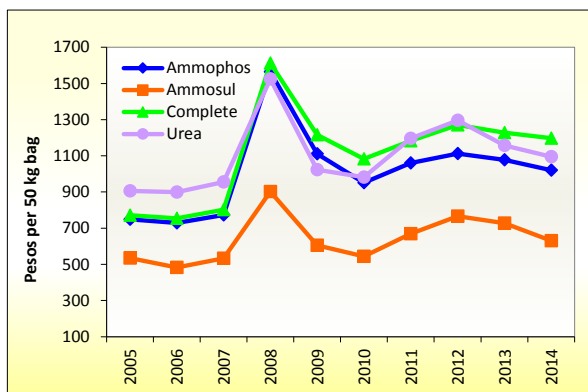
Source: PSA

## PRICE STATISTICS

**Table 6.7 FERTILIZERS: AVERAGE DEALERS' PRICES BY GRADE  
PHILIPPINES, 2010-2014**

ITEM	2010	2011	2012	2013	2014P
	(Pesos per 50 kg bag)				
UREA	981.11	1,196.29	1,296.32	1,158.02	1,094.15
AMMOSUL	544.49	668.86	766.18	727.91	630.68
COMPLETE	1,083.41	1,183.24	1,269.98	1,227.86	1,197.01
AMMOPHOS	951.47	1,059.88	1,111.92	1,077.52	1,029.69

Source: PSA



*Figure 5. Fertilizers: Average Dealers' Prices by Grade, Philippines, 2005-2014*





# AGRICULTURAL FOREIGN TRADE STATISTICS

# AGRICULTURAL FOREIGN TRADE STATISTICS

**Table 7.1 TOP AGRICULTURAL EXPORTS: VOLUME AND VALUE  
PHILIPPINES, 2010-2014**

ITEM	2010	2011	2012	2013	2014P
<b>VOLUME OF TOP EXPORTS</b> ('000 mt)					
Coconut Oil	1,348.74	826.72	884.46	1,080.84	795.13
Bananas, Fresh	1,590.07	2,055.51	2,646.12	3,266.55	3,168.35
Tuna	110.49	80.13	61.71	165.76	87.48
Pineapple & Products	406.00	582.68	742.61	816.64	698.68
Tobacco					
Manufactured	23.49	28.16	15.80	34.96	29.34
Desiccated Coconut	108.94	108.87	68.58	92.81	70.75
Seaweeds and					
Carageenan	34.16	46.13	33.91	55.70	33.97
Copra Oil Cake	723.08	314.34	462.07	785.95	408.08
Tobacco					
Unmanufactured	33.45	44.89	15.39	31.60	27.57
Centrifugal Sugar	61.22	578.74	201.93	471.27	150.48
<b>VALUE OF TOTAL AGRICULTURAL EXPORTS</b> (FOB in Million US\$)					
	<b>4,101.09</b>	<b>5,431.76</b>	<b>5,037.94</b>	<b>6,400.03</b>	<b>6,769.65</b>
<b>VALUE OF TOP EXPORTS</b> (FOB in million US \$)					
Coconut Oil	1,265.93	1,425.45	1,041.48	1,005.58	1,345.77
Bananas, Fresh	319.30	472.38	646.66	962.58	1,136.42
Tuna	359.40	314.58	455.10	681.62	459.83
Pineapple & Products	242.58	345.64	414.91	425.38	436.14
Tobacco					
Manufactured	161.16	199.97	157.46	248.02	322.96
Desiccated Coconut	152.61	286.77	197.00	198.67	262.69
Seaweeds and					
Carageenan	154.24	210.78	184.15	218.58	262.54
Copra Oil Cake	78.38	58.80	124.61	211.26	132.76
Tobacco					
Unmanufactured	105.61	131.02	76.32	92.34	126.35
Centrifugal Sugar	29.62	351.45	108.80	272.88	107.14

Source: PSA

**Table 7.2 TOP AGRICULTURAL EXPORTS: VOLUME AND VALUE BY MAJOR COUNTRY OF DESTINATION, PHILIPPINES, 2014P**

COMMODITY/COUNTRY OF DESTINATION	VOLUME	VALUE	% SHARE (VALUE)
<b>VOLUME AND VALUE</b> ('000 mt, FOB in million US \$)			
<b>COCONUT OIL</b> (crude & refined)	<b>795.13</b>	<b>1,345.77</b>	<b>100.00</b>
United States of America	350.29	609.50	45.29
Netherlands	256.90	368.45	27.38
Hongkong	2.12	84.92	6.31
Japan ( <i>Excludes Okinawa</i> )	52.57	80.21	5.96
Italy	36.50	39.77	2.96
Others	96.75	162.92	12.11
<b>BANANA, Fresh</b>	<b>3,168.35</b>	<b>1,136.42</b>	<b>100.00</b>
Japan ( <i>Excludes Okinawa</i> )	903.05	399.90	35.19
China, <i>People's Republic of</i>	885.16	263.37	23.18
Korea, <i>Republic of South</i>	396.15	118.37	10.42
New Zealand ( <i>Excludes Western Samoa</i> )	31.70	78.59	6.92
Iran, <i>Islamic Republic of</i>	243.33	55.66	4.90
Others	708.95	220.52	19.40
<b>TUNA</b>	<b>87.48</b>	<b>459.83</b>	<b>100.00</b>
United States of America	19.91	102.29	22.25
Japan ( <i>Excludes Okinawa</i> )	11.71	101.28	22.02
Germany	11.53	65.36	14.21
UK Great Britain and N. Ireland	8.95	51.76	11.26
Netherlands	2.57	16.10	3.50
Others	32.80	123.04	26.76
<b>PINEAPPLE AND PRODUCTS</b>	<b>698.68</b>	<b>436.14</b>	<b>100.00</b>
United States of America	195.20	168.40	38.61
Japan ( <i>Excludes Okinawa</i> )	175.33	71.22	16.33
Korea, <i>Republic of South</i>	101.53	44.61	10.23
Singapore	39.72	31.28	7.17
China, <i>People's Republic of</i>	46.17	22.16	5.08
Others	140.74	98.48	22.58

# AGRICULTURAL FOREIGN TRADE STATISTICS

**Table 7.2 TOP AGRICULTURAL EXPORTS: VOLUME** ...(Continued)

COMMODITY/COUNTRY OF DESTINATION	VOLUME	VALUE	% SHARE (VALUE)
<b>TOBACCO MANUFACTURED</b>	<b>29.34</b>	<b>322.96</b>	<b>100.00</b>
Thailand	9.85	117.16	36.28
Korea, <i>Republic of South</i>	9.34	94.67	29.31
Singapore	3.22	27.35	8.47
Indonesia ( <i>Includes West Irian</i> )	1.91	21.17	6.55
Germany	1.60	19.74	6.11
Others	3.42	42.88	13.28
<b>DESICCATED COCONUT</b>	<b>70.75</b>	<b>262.69</b>	<b>100.00</b>
United States of America	17.81	69.65	26.51
Belgium	4.27	18.53	7.05
Canada	4.15	16.51	6.29
China, <i>People's Republic of</i>	6.62	16.47	6.27
Netherlands	4.14	16.27	6.19
Others	33.76	125.26	47.68
<b>SEAWEEDS &amp; CARAGEENAN</b>	<b>33.97</b>	<b>262.54</b>	<b>100.00</b>
United States of America	9.51	63.00	24.00
China, <i>People's Republic of</i>	6.05	19.39	7.39
Spain	1.54	15.38	5.86
Thailand	1.06	12.67	4.83
Belgium	1.33	12.57	4.79
Others	14.47	139.53	53.15
<b>COPRA OIL CAKE</b>	<b>408.08</b>	<b>132.76</b>	<b>100.00</b>
Korea, <i>Republic of South</i>	164.50	60.37	45.47
China, <i>People's Republic of</i>	87.62	21.18	15.95
Vietnam	86.91	19.83	14.93
Italy	a/	9.81	7.39
Taiwan ( <i>Republic Of China</i> )	20.76	5.63	4.24
Others	48.30	15.95	12.01

a/ less than 0.01

**Table 7.2 TOP AGRICULTURAL EXPORTS: VOLUME** ...*(Continued)*

COMMODITY/COUNTRY OF DESTINATION	VOLUME	VALUE	% SHARE (VALUE)
<b>TOBACCO UNMANUFACTURED</b>	<b>27.57</b>	<b>126.35</b>	<b>100.00</b>
Belgium	3.14	14.83	11.74
Korea, Republic of South	4.67	21.44	16.97
Indonesia (Includes West Irian)	1.08	11.45	9.06
United States of America	4.70	14.02	11.09
Singapore	2.67	9.74	7.71
Others	11.31	54.86	43.42
<b>CENTRIFUGAL SUGAR</b>	<b>150.48</b>	<b>107.14</b>	<b>100.00</b>
United States of America	123.93	71.45	66.69
Japan (Excludes Okinawa)	24.00	24.27	22.66
Korea, Republic of South	1.92	10.77	10.05
Italy	0.20	0.45	0.42
Singapore	0.43	0.19	0.18
Others	a/	a/	-

a/ less than 0.01

Source: PSA

# AGRICULTURAL FOREIGN TRADE STATISTICS

**Table 7.3 EXPORTS OF SELECTED COMMODITIES: VOLUME AND VALUE, PHILIPPINES, 2010-2014**

ITEM	2010	2011	2012	2013	2014P
<b>VOLUME OF EXPORTS</b> ('000 mt)					
Abaca	0.09	0.08	0.08	0.03	0.93
Nata de Coco	5.34	6.35	5.05	3.58	3.41
Asparagus	0.22	0.48	0.52	0.63	0.26
Papaws (fresh/dried)	1.51	3.04	3.11	8.93	5.08
Shallots	7.54	14.01	5.82	3.52	2.37
Onions (fresh/dried/ powdered)	0.33	a/	a/	0.05	0.11
Kaong	1.05	1.09	0.63	0.08	1.13
Manioc (Cassava) & Tapioca	4.25	1.10	0.58	1.03	1.36
Coconut (Young)	2.45	6.59	1.61	2.51	1.38
Yam (fresh/dried/ powdered)	0.41	0.46	0.34	1.24	0.40
Garlic	0.07	0.14	0.11	0.06	0.07
<b>VALUE OF EXPORTS</b> (FOB in million US\$)					
Abaca	13.43	13.41	13.41	5.11	11.45
Nata de Coco	5.89	6.66	5.08	3.57	3.06
Asparagus	0.53	1.22	1.53	1.59	1.13
Papaws (fresh/dried)	2.25	3.61	3.82	6.81	5.08
Shallots	2.88	6.54	2.64	1.54	1.31
Onions (fresh/dried/ powdered)	0.24	0.07	0.06	0.07	0.13
Kaong	1.92	2.09	1.12	0.13	1.51
Manioc (Cassava) & Tapioca	2.20	1.56	0.97	1.60	2.31
Coconut (Young)	0.63	2.99	1.39	1.62	1.99
Yam (fresh/dried/ powdered)	0.70	0.79	1.08	1.57	0.84
Garlic	0.27	0.79	0.77	0.34	0.58

a/ less than 0.01

Source: PSA

**Table 7.4 TOP AGRICULTURAL IMPORTS: VOLUME AND VALUE  
PHILIPPINES, 2010-2014**

ITEM	2010	2011	2012	2013	2014P
<b>VOLUME OF TOP IMPORTS</b> ('000 mt)					
Soyabean Oil/Cake Meal	1,043.69	2,068.93	1,455.57	1,513.32	1,990.01
Wheat ( <i>Including Spelt</i> ) and Meslin	1,973.28	2,787.17	3,000.30	2,472.61	2,866.43
Milk and Cream and Products	288.92	273.87	282.43	296.00	274.34
Rice	2,379.11	707.67	1,042.14	399.08	1,075.89
Fertilizer Manufactured	913.63	889.97	991.04	978.62	1,189.77
Meat of Bovine Animals	93.82	83.99	82.58	75.44	100.24
Palm Kernel Olein ( <i>inedible</i> )	104.15	357.47	160.45	71.17	335.43
Coffee	72.25	51.61	104.57	90.89	79.35
Urea	574.48	577.51	616.03	637.04	750.15
Maize	88.47	66.19	136.57	341.60	575.09
<b>VALUE OF TOTAL AGRICULTURAL IMPORTS</b> (CIF in million US \$)					
	<b>7,399.79</b>	<b>7,839.93</b>	<b>8,168.33</b>	<b>7,931.14</b>	<b>9,506.06</b>
<b>VALUE OF TOP IMPORTS</b> (CIF in million US \$)					
Soyabean Oil/Cake Meal	402.35	576.62	689.32	758.88	969.48
Wheat ( <i>Including Spelt</i> ) and Meslin	547.18	961.62	975.91	868.93	922.53
Milk and Cream and Products	592.27	688.79	644.35	751.22	755.03
Rice	1,652.52	383.15	438.08	172.31	446.22
Fertilizer Manufactured	270.46	327.13	385.72	349.64	349.38
Meat of Bovine Animals	190.86	238.87	238.70	235.51	333.59
Palm Kernel Olein ( <i>inedible</i> )	57.02	282.00	143.48	61.14	296.81
Coffee	117.99	120.15	251.14	214.62	262.97
Urea	179.46	233.92	252.39	221.36	246.54
Maize	77.23	48.02	88.52	138.52	204.57

Source: PSA

# AGRICULTURAL FOREIGN TRADE STATISTICS

**Table 7.5 OTHER MAJOR AGRICULTURAL IMPORTS: VOLUME AND VALUE, PHILIPPINES, 2010-2014**

ITEM	2010	2011	2012	2013	2014P
<b>VOLUME OF IMPORTS ('000 mt)</b>					
<b>LIVESTOCK &amp; POULTRY</b>					
Live Bovine ( <i>million head</i> )	0.01	0.02	0.02	0.02	0.02
Meat of Bovine, <i>frozen</i>	93.82	83.99	82.58	75.44	100.24
Live Chicken ( <i>million head</i> )	0.64	0.47	0.83	0.51	-
Chicken Meat, <i>frozen</i>	98.00	112.11	107.26	95.73	165.38
<b>VEGETABLES</b>					
Garlic	26.18	24.21	11.25	5.22	32.71
Onion	12.07	5.76	19.51	9.45	10.98
Cauliflower and Headed Broccoli	0.24	0.12	0.11	0.02	0.01
Potatoes	10.15	8.40	6.73	4.39	69.11
<b>VALUE OF IMPORTS (CIF in million US \$)</b>					
<b>LIVESTOCK &amp; POULTRY</b>					
Live Bovine	8.74	11.09	19.55	18.57	22.12
Meat of Bovine, <i>frozen</i>	190.86	238.87	238.70	235.51	333.59
Live Chicken	6.81	4.41	8.20	6.32	-
Chicken Meat, <i>frozen</i>	67.93	84.20	106.98	96.21	166.09
<b>VEGETABLES</b>					
Garlic	6.22	8.16	4.16	3.26	12.84
Onion	4.67	4.16	4.75	3.38	5.34
Cauliflower and Headed Broccoli	0.17	0.13	0.20	0.05	0.02
Potatoes	3.91	3.18	2.42	1.31	59.06

a/ less than 0.01

Source: PSA



**Table 7.6 TOP AGRICULTURAL IMPORTS: VOLUME AND VALUE  
BY MAJOR COUNTRY OF ORIGIN, PHILIPPINES, 2014P**

COMMODITY/COUNTRY OF ORIGIN	VOLUME	VALUE	% SHARE (VALUE)
<b>VOLUME AND VALUE</b> ('000 mt, CIF in million US \$)			
<b>SOYABEAN OIL/CAKE MEAL</b>	<b>1,990.01</b>	<b>969.48</b>	<b>100.00</b>
United States of America	903.29	480.16	49.53
Argentina	1,061.44	476.00	49.10
India	10.58	6.01	0.62
Brazil	2.99	2.27	0.23
Vietnam	6.50	2.18	0.23
Others	5.22	2.87	0.30
<b>WHEAT (including spelt) and MESLIN</b>	<b>2,866.43</b>	<b>922.53</b>	<b>100.00</b>
United States of America	1,749.63	590.11	63.97
Australia	478.62	155.67	16.87
Ukraine ( <i>Ukrainian S.S.R.</i> )	201.99	52.98	5.74
Romania	124.48	35.09	3.80
UK Great Britain and N. Ireland	52.95	17.72	1.92
Others	258.75	70.97	7.69
<b>MILK AND CREAM AND PRODUCTS</b>	<b>274.34</b>	<b>755.03</b>	<b>100.00</b>
New Zealand ( <i>Excludes Western Samoa</i> )	67.00	230.01	30.46
United States of America	65.08	224.92	29.79
Australia	17.06	48.85	6.47
Netherlands	13.34	45.52	6.03
Canada	10.70	25.88	3.43
Others	101.16	179.85	23.82
<b>RICE</b>	<b>1,075.89</b>	<b>446.22</b>	<b>100.00</b>
Vietnam	853.79	343.12	76.89
Thailand	199.11	78.11	17.50
India	20.87	20.44	4.58
China	2.03	4.43	0.99
Pakistan	0.05	0.09	0.02
Others	0.03	0.03	0.01

# AGRICULTURAL FOREIGN TRADE STATISTICS

**Table 7.6 TOP AGRICULTURAL IMPORTS: VOLUME ...**(Continued)

COMMODITY/COUNTRY OF ORIGIN	VOLUME	VALUE	% SHARE (VALUE)
<b>FERTILIZER MANUFACTURED</b>	<b>1,189.77</b>	<b>349.38</b>	<b>100.00</b>
China, <i>People's Republic of</i>	700.40	181.18	51.86
Japan ( <i>Excludes Okinawa</i> )	118.96	26.84	7.68
Canada	62.86	21.46	6.14
Korea, <i>Republic of South</i>	61.64	22.28	6.38
Indonesia ( <i>Includes West Irian</i> )	54.44	18.27	5.23
Others	191.47	79.35	22.71
<b>MEAT OF BOVINE ANIMALS</b>	<b>100.24</b>	<b>333.59</b>	<b>100.00</b>
Australia	36.18	146.00	43.77
India	39.01	113.93	34.15
Brazil	11.04	29.49	8.84
United States of America	6.35	19.65	5.89
New Zealand ( <i>Excludes Western Samoa</i> )	3.49	12.76	3.83
Others	4.17	11.75	3.52
<b>PALM KERNEL OLEIN (<i>inedible</i>)</b>	<b>335.43</b>	<b>296.81</b>	<b>100.00</b>
Malaysia ( <i>Federation Of Malaya</i> )	266.07	234.15	78.89
Indonesia ( <i>Includes West Irian</i> )	59.33	53.69	18.09
Sabah ( <i>Comprises Malaysia</i> )	5.15	4.82	1.62
Singapore	4.75	4.06	1.37
China, <i>People's Republic of</i>	0.04	0.05	0.02
Others	0.10	0.05	0.02
<b>COFFEE</b>	<b>79.35</b>	<b>262.97</b>	<b>100.00</b>
Indonesia ( <i>Includes West Irian</i> )	59.51	188.12	71.54
Vietnam	9.72	33.24	12.64
Malaysia ( <i>Federation Of Malaya</i> )	2.53	16.98	6.46
Thailand	4.85	16.01	6.09
China, <i>People's Republic of</i>	0.48	2.15	0.82
Others	2.26	6.47	2.46

**Table 7.6 TOP AGRICULTURAL IMPORTS: VOLUME** ...(Continued)

COMMODITY/COUNTRY OF ORIGIN	VOLUME	VALUE	% SHARE (VALUE)
<b>UREA</b>	<b>750.15</b>	<b>246.54</b>	<b>100.00</b>
China, <i>People's Republic of</i>	357.98	118.80	48.19
Malaysia ( <i>Federation Of Malaya</i> )	156.32	52.25	21.19
Indonesia ( <i>Includes West Irian</i> )	70.56	21.63	8.78
Qatar	54.42	19.63	7.96
Saudi Arabia	47.20	15.35	6.23
Others	63.67	18.87	7.65
<b>MAIZE</b>	<b>575.09</b>	<b>204.57</b>	<b>100.00</b>
Thailand	364.61	119.30	58.32
Argentina	83.85	33.96	16.60
Vietnam	51.23	15.80	7.72
Indonesia ( <i>Includes West Irian</i> )	28.99	10.67	5.21
South Africa, <i>Republic of</i>	2.58	8.69	4.25
Others	43.84	16.16	7.90

Source: PSA

# AGRICULTURAL FOREIGN TRADE STATISTICS

**Table 7.7 AGRICULTURAL TRADE BALANCES OF THE PHILIPPINES  
WITH ITS MAJOR TRADING PARTNERS, 2010-2014**

ITEM	2010	2011	2012	2013	2014P
(Export in FOB M US \$; Import in CIF M US \$)					
<b>PHILIPPINES</b>					
<i>Agricultural Exports</i>	4101.09	5431.76	5037.94	6400.03	6769.65
<i>Agricultural Imports</i>	7399.79	7839.93	8168.33	7931.14	9506.06
<i>Trade Balance</i>	(3,298.70)	(2,408.17)	(3,130.39)	(1,531.11)	(2,736.41)
<b>AUSTRALIA</b>					
<i>Agricultural Exports</i>	35.65	52.32	48.03	49.02	74.27
<i>Agricultural Imports</i>	260.98	564.21	719.66	340.91	499.98
<i>Trade Balance</i>	(225.33)	(511.89)	(671.63)	(291.89)	(425.71)
<b>JAPAN</b>					
<i>Agricultural Exports</i>	432.02	653.05	691.85	915.99	946.1
<i>Agricultural Imports</i>	117.41	138.67	116.17	100.87	106.9
<i>Trade Balance</i>	341.61	514.38	575.68	815.12	839.2
<b>USA</b>					
<i>Agricultural Exports</i>	961.92	1454.27	1203.45	1466.98	1579.07
<i>Agricultural Imports</i>	1142.38	1655.15	1765.35	1754.83	1973.45
<i>Trade Balance</i>	(180.46)	(200.88)	(561.90)	(287.85)	(394.38)
<b>ASEAN</b>					
<i>Agricultural Exports</i>	608.75	920.71	857.68	964.6	788.53
<i>Agricultural Imports</i>	2863.46	2186.69	2206.89	1956.8	2708.08
<i>Trade Balance</i>	(2,254.72)	(1,265.98)	(1,349.21)	(992.20)	(1,919.55)
<b>EUROPEAN UNION</b>					
<i>Agricultural Exports</i>	1017.05	1066.03	911.75	1038.05	1027.14
<i>Agricultural Imports</i>	587.96	607.94	631.93	738.34	1053.05
<i>Trade Balance</i>	429.09	458.09	279.82	299.71	(25.91)
<b>Rest of the World</b>					
<i>Agricultural Exports</i>	1045.69	1285.39	1325.18	1965.39	2354.54
<i>Agricultural Imports</i>	2427.6	2687.26	2728.34	3039.38	3164.61
<i>Trade Balance</i>	(1,381.91)	(1,401.87)	(1,403.16)	(1,073.99)	(810.07)

Source: PSA



**SUPPLY  
UTILIZATION  
ACCOUNTS**

## SUPPLY UTILIZATION ACCOUNTS

**Table 8.1 RICE: SUPPLY UTILIZATION ACCOUNTS, PHILIPPINES, 2010-2014**

ITEM	2010	2011	2012	2013	2014P
	('000 mt)				
<b>Gross Supply</b>	<b>15,322</b>	<b>15,042</b>	<b>15,465</b>	<b>14,981</b>	<b>15,605</b>
Beginning Stock	2,629	3,424	2,631	2,524	2,126
Production	10,315	10,911	11,793	12,059	12,405
Imports	2,378	707	1,041	398	1,074
<b>Utilization</b>					
Exports	a/	a/	a/	1	1
Seeds	214	223	230	233	232
Feeds & Waste	670	709	767	784	806
Processing	413	436	472	482	496
Net Food Disposable	10,601	11,043	11,472	11,355	11,408
Per Capita NFD					
<i>kilograms/year</i>	113.82	116.46	118.87	115.64	114.22
<i>grams/day</i>	311.84	319.07	325.67	316.82	312.93
Ending Stock	3,424	2,631	2,524	2,126	2,662

a/ Less than 1 thousand metric ton

Source: PSA

**Table 8.2 CORN: SUPPLY UTILIZATION ACCOUNTS, PHILIPPINES, 2010-**

ITEM	2010	2011	2012	2013	2014P
	('000 mt)				
<b>Gross Supply</b>	<b>6,719</b>	<b>7,190</b>	<b>7,710</b>	<b>7,880</b>	<b>8,515</b>
Beginning Stock	254	153	166	161	169
Production	6,377	6,971	7,407	7,377	7,771
Imports	88	66	137	342	575
<b>Utilization</b>					
Exports	a/	a/	a/	a/	1
Seeds	50	51	52	51	52
Feeds & Waste	4,145	4,531	4,815	4,795	5,051
Processing	851	930	988	984	1,037
Net Food Disposable	1,520	1,512	1,694	1,881	2,190
Per Capita NFD					
<i>kilograms/year</i>	16.32	15.95	17.55	19.16	21.93
<i>grams/day</i>	44.71	43.70	48.08	52.49	60.08
Ending Stock	153	166	161	169	184

a/ Less than 1 thousand metric ton

Source: PSA

**Table 8.3 PAPAYA: SUPPLY UTILIZATION ACCOUNTS, PHILIPPINES, 2010-2014**

ITEM	2010	2011	2012	2013	2014P
			(mt)		
<b>Gross Supply</b>	<b>165,981</b>	<b>157,907</b>	<b>164,913</b>	<b>166,336</b>	<b>172,628</b>
Production	165,981	157,907	164,913	166,336	172,628
Imports	-	-	-	-	-
<b>Utilization</b>					
Exports	1,391	2,951	3,065	5,925	4,167
Feeds & Waste	9,875	9,297	9,711	9,625	10,108
Net Food Disposable	154,715	145,659	152,137	150,786	158,353
Per Capita NFD					
<i>kilograms/year</i>	1.66	1.54	1.58	1.54	1.59
<i>grams/day</i>	4.55	4.22	4.33	4.22	4.36

Source: PSA

**Table 8.4 CABBAGE: SUPPLY UTILIZATION ACCOUNTS, PHILIPPINES, 2010-2014**

ITEM	2010	2011	2012	2013	2014P
			(mt)		
<b>Gross Supply</b>	<b>128,964</b>	<b>125,309</b>	<b>126,381</b>	<b>127,463</b>	<b>127,976</b>
Production	128,964	125,309	126,381	127,463	127,976
Imports	-	-	-	-	-
<b>Utilization</b>					
Exports	-	4	-	-	-
Seeds	32	32	32	31	31
Feeds & Waste	10,317	10,024	10,110	10,197	10,238
Net Food Disposable	118,615	115,249	116,239	117,235	117,707
Per Capita NFD					
<i>kilograms/year</i>	1.27	1.22	1.20	1.19	1.18
<i>grams/day</i>	3.48	3.34	3.29	3.26	3.23

Source: PSA

## SUPPLY UTILIZATION ACCOUNTS

**Table 8.5 CASSAVA: SUPPLY UTILIZATION ACCOUNTS,  
PHILIPPINES, 2010-2014**

ITEM	2010	2011	2012	2013	2014P
			(mt)		
<b>Gross Supply</b>	<b>2,125,954</b>	<b>2,215,529</b>	<b>2,223,260</b>	<b>2,377,438</b>	<b>2,550,693</b>
Production	2,101,454	2,209,684	2,223,182	2,361,561	2,540,254
Imports	24,500	5,845	78	15,877	10,439
<b>Utilization</b>					
Exports	1,011	1,098	583	1,031	1,299
Feeds & Waste	126,087	132,581	133,391	141,694	152,415
Processing	1,784,952	1,860,122	1,867,049	1,996,182	2,141,491
Net Food Disposable	213,904	221,728	222,237	238,531	255,488
Per Capita NFD					
<i>kilograms/year</i>	2.30	2.34	2.30	2.43	2.56
<i>grams/day</i>	6.30	6.41	6.30	6.66	7.01

Source: PSA

**Table 8.6 MONGO: SUPPLY UTILIZATION ACCOUNTS,  
PHILIPPINES, 2010-2014**

ITEM	2010	2011	2012	2013	2014P
			(mt)		
<b>Gross Supply</b>	<b>57,870</b>	<b>57,493</b>	<b>64,543</b>	<b>66,087</b>	<b>60,492</b>
Production	27,055	32,960	32,366	32,422	32,144
Imports	30,815	24,533	32,177	33,665	28,348
<b>Utilization</b>					
Exports	422	275	77	28	50
Seeds	180	204	200	196	193
Feeds & Waste	287	286	322	330	302
Net Food Disposable	56,981	56,728	63,944	65,533	59,947
Per Capita NFD					
<i>kilograms/year</i>	0.61	0.60	0.66	0.67	0.60
<i>grams/day</i>	1.67	1.64	1.81	1.84	1.64

Source: PSA



**Table 8.7 CHICKEN (Dressed): SUPPLY UTILIZATION ACCOUNTS, PHILIPPINES, 2010-2014**

ITEM	2010	2011	2012	2013	2014P
	(mt)				
<b>Gross Supply</b>	<b>966,587</b>	<b>1,032,170</b>	<b>1,133,275</b>	<b>1,186,152</b>	<b>1,280,257</b>
Production	868,583	920,061	1,026,017	1,087,425	1,114,881
Imports	98,004	112,109	107,258	98,727	165,376
<b>Utilization</b>					
Exports	5,505	9,902	5,800	6,084	5,644
Net Food Disposable	961,082	1,022,268	1,127,475	1,180,068	1,274,613
Per Capita NFD					
<i>kilograms/year</i>	10.32	10.78	11.68	12.02	12.76
<i>grams/day</i>	28.27	29.53	32.00	32.93	34.96

Source: PSA

**Table 8.8 BEEF: SUPPLY UTILIZATION ACCOUNTS, PHILIPPINES, 2010-2014**

ITEM	2010	2011	2012	2013	2014P
	(mt)				
<b>Gross Supply</b>	<b>244,816</b>	<b>244,875</b>	<b>244,143</b>	<b>248,423</b>	<b>266,812</b>
Production	194,754	196,233	194,810	197,971	201,390
Imports	50,062	48,642	49,333	50,452	65,422
<b>Utilization</b>					
Exports	1	-	2	49	22
Processing	19,475	19,623	19,481	19,797	20,139
Carcass					
Net Food Disposable	194,559	195,409	195,814	199,779	215,848
Per Capita NFD					
<i>kilograms/year</i>	2.09	2.06	2.03	2.03	2.16
<i>grams/day</i>	5.73	5.64	5.56	5.56	5.92
Offals					
Net Food Disposable	30,781	29,843	28,845	28,798	30,803
Per Capita NFD					
<i>kilograms/year</i>	0.33	0.31	0.30	0.29	0.31
<i>grams/day</i>	0.90	0.85	0.82	0.79	0.85

Source: PSA

## SUPPLY UTILIZATION ACCOUNTS

**Table 8.9 MILKFISH: SUPPLY UTILIZATION ACCOUNTS  
PHILIPPINES, 2010-2014**

ITEM	2010	2011	2012	2013	2014P
	(mt)				
<b>Gross Supply</b>	<b>357,961</b>	<b>378,459</b>	<b>392,071</b>	<b>406,241</b>	<b>402,091</b>
Production	357,919	378,299	391,330	405,783	401,979
Imports	42	160	741	458	112
<b>Utilization</b>					
Exports	2,984	3,465	2,297	4,121	2,506
Feeds & Waste	10,738	11,349	11,740	12,173	12,059
Processing	114,534	121,056	125,226	129,851	128,633
Net Food Disposable	229,705	242,589	252,808	260,096	258,893
Per Capita NFD					
<i>kilograms/year</i>	2.47	2.56	2.62	2.65	2.59
<i>grams/day</i>	6.77	7.01	7.18	7.26	7.10

Source: PSA

**Table 8.10 TILAPIA: SUPPLY UTILIZATION ACCOUNTS  
PHILIPPINES, 2010-2014**

ITEM	2010	2011	2012	2013	2014P
	(mt)				
<b>Gross Supply</b>	<b>303,735</b>	<b>303,447</b>	<b>307,975</b>	<b>317,781</b>	<b>313,378</b>
Production	303,735	303,170	307,975	317,757	313,378
Imports	-	277	-	24	-
<b>Utilization</b>					
Exports	-	-	293	5,319	1,642
Feeds & Waste	9,112	9,095	9,239	9,533	9,401
Net Food Disposable	294,623	294,352	298,443	302,929	302,335
Per Capita NFD					
<i>kilograms/year</i>	3.16	3.10	3.09	3.08	3.03
<i>grams/day</i>	8.66	8.49	8.47	8.44	8.30

Source: PSA

**TASK FORCE ON  
Updating and Revision of  
SELECTED STATISTICS ON AGRICULTURE 2015**

Advisers

**LISA GRACE S. BERSALES**  
*National Statistician and Civil Registrar General*

**ROMEO S. RECIDE**  
*Interim Deputy National Statistician  
Sectoral Statistics Office*

**JOSIE B. PEREZ**  
*Deputy National Statistician  
Censuses and Technical Coordination Office*

**VALENTINO C. ABUAN**  
*Interim Assistant National Statistician  
Information Technology and Dissemination Services*

**RODRIGO N. LABUGUEN**  
*Chair*

**JING B. JALISAN**  
*Co-Chair*

Focal Persons

<b>MARIA CAROL G. DURAN</b>	- AASID
<b>ELIZABETH B. CABRERA</b>	- LPSD
<b>REINELDA P. ADRIANO</b>	- FSD
<b>MICHELLE D. GUSTILO</b>	- CSD
<b>ANITA M. ILAO</b>	- AMSAD

Publishing Staff

**QUIRINO G. SANTOS, JR.**  
*Graphic Designer*

**HAIDEE D.T. ORELLANA**  
*Circulation*

**PHILIPPINE STATISTICS AUTHORITY**  
PSA-CVEA Building, East Avenue, Diliman,  
Quezon City, Philippines 1104  
Tel. No.: 462 6600 Local 834

**[www.psa.gov.ph](http://www.psa.gov.ph)**