



SELECTED STATISTICS ON AGRICULTURE *2018*



REPUBLIC OF THE PHILIPPINES

PHILIPPINE STATISTICS AUTHORITY

SOLID • RESPONSIVE • WORLD-CLASS



Management
System
ISO 9001:2015



www.tuv.com
ID 9108640991

SELECTED STATISTICS ON AGRICULTURE 2018



REPUBLIC OF THE PHILIPPINES
PHILIPPINE STATISTICS AUTHORITY
SOLID • RESPONSIVE • WORLD-CLASS



REPUBLIC OF THE PHILIPPINES

HIS EXCELLENCY
PRESIDENT RODRIGO R. DUTERTE



PHILIPPINE STATISTICS AUTHORITY

LISA GRACE S. BERSALES, Ph.D.

Undersecretary
National Statistician and Civil Registrar General

ROSALINDA P. BAUTISTA

(Director II)
Officer-in-Charge
Sectoral Statistics Office

ISSN-2012-0362

Selected Statistics on Agriculture is a publication of the Philippine Statistics Authority (PSA). The PSA reserves exclusive right to reproduce this publication in whatever form. Should any portion of this publication be included in a report/article, the title of the publication and the PSA should be cited as the source of the data. The PSA will not be responsible for any information derived from the processing of data contained in this publication.

FOREWORD

The 2018 Selected Statistics on Agriculture (SSA) is the 29th issue of the annual statistical report published by the Philippine Statistics Authority (PSA). It provides a five-year data series (2013-2017) for selected macroeconomic indicators and agricultural production by subsector and by commodity, including statistics on production costs and returns, price and trade, and supply utilization accounts. Through this report, the PSA consolidates statistics and indicators that can respond to the needs of our data users.

The 29th issue of SSA can be downloaded from www.psa.gov.ph and is available in printed copies.

As the PSA strives to improve its statistical products and services, we welcome comments and feedback on the contents and format of this publication.



LISA GRACE S. BERSALES, Ph.D.

Undersecretary

National Statistician and Civil Registrar General

Quezon City, Philippines
August 2018

ACKNOWLEDGMENT

Our appreciation and gratitude go to the following agencies for their cooperation and support in sharing with us their data: *Asian Development Bank (ADB), National Meat Inspection Service (NMIS), Bangko Sentral ng Pilipinas (BSP), Department of Budget and Management (DBM), Food and Agriculture Organization (FAO), Fertilizer and Pesticide Authority (FPA), Philippine Fiber Industry Development Authority (PhilFIDA), National Food Authority (NFA), National Irrigation Administration (NIA), Philippine Coconut Authority (PCA), Sugar Regulatory Administration (SRA) and World Bank (WB).*

TABLE OF CONTENTS

	Page/s
Foreword	i
Acknowledgment	ii
Table of Contents	iii
Explanatory Notes	iv
An Overview of the Philippine Agricultural Economy	1
Selected Macroeconomic and Agriculture Sector Statistics	4
Crops Subsector Statistics	8
Livestock & Poultry Subsector Statistics	18
Fisheries Subsector Statistics	24
Production Costs and Returns	30
Price Statistics	34
Agricultural Foreign Trade Statistics	42
Supply Utilization Accounts	54

EXPLANATORY NOTES

1. Sources of basic data are indicated at the bottom of each table.
2. Unless otherwise indicated, year refers to calendar year.
3. As a rule, figures from source publications were copied to the extent possible. In some instances, however, figures were rounded-off or combined.
4. Figures may not add up to the totals due to rounding off.
5. Yield per hectare is derived prior to rounding-off the data on production and hectareage.
6. The following symbols and abbreviations are used in the tables:

---	<i>Data not yet available</i>
-	<i>None</i>
R	<i>Revised</i>
P	<i>Preliminary</i>
mt	<i>Metric Ton</i>
ha(s)	<i>Hectare/s</i>
kg	<i>Kilogram</i>
GNI	<i>Gross National Income</i>
GVA	<i>Gross Value Added</i>
GDP	<i>Gross Domestic Product</i>
FOB	<i>Freight on Board</i>
CIF	<i>Cost Insurance Freight</i>
NFD	<i>Net Food Disposable</i>
CPH	<i>Census of Population and Housing</i>

AN OVERVIEW OF THE PHILIPPINE AGRICULTURAL ECONOMY

Economic Performance. In 2017, the country's Gross Domestic Product (GDP) grew by 6.68 percent. The Gross Value Added (GVA) in the agriculture and fishing sector, which accounted for 8.49 percent of the GDP, registered a 4.01 percent growth during the year.

Production Performance in Agriculture. The gross output in agriculture recorded a 3.96 percent expansion in 2017. All subsectors posted output gains, except for fisheries. Production in the crops subsector recovered from the previous years' decline and came up with a 6.69 percent growth. Palay and corn outputs increased by 9.36 percent and 9.64 percent, respectively. Coconut production grew by 1.62 percent while sugarcane recorded a 30.92 percent increment in production. Output improvements were also noted among the other major crops such as banana, pineapple, peanut, mungo, cassava, sweet potato, tomato, garlic, onion, eggplant and rubber. On the other hand, downtrend in production continued in coffee, mango, cabbage and calamansi.

Production in the livestock subsector was up by 1.12 percent in 2017. Among the livestock components, continuous output increases were registered for hog and dairy. Hog production went up by 1.49 percent. Dairy had a 7.56 percent output gain. The poultry subsector indicated a 4.62 percent growth in output. Chicken production increased by 4.26 percent while that of duck declined by 3.49 percent. Output increases were recorded for eggs by 6.65 percent for chicken and 2.88 percent for duck.

The fisheries subsector continued to record another drop as it posted a 1.67 percent reduction in output in 2017. Among the major species, declines in production were noted in roundscale and tiger prawn while increases were observed in skipjack, yellowfin tuna, milkfish, seaweed and tilapia.

Prices. In 2017, the prices received by farmers for their palay production went up by 4.48 percent. Farmgate price of white corngrain was higher by 4.15 percent while that of yellow corngrain was down by 1.53 percent. Other crops exhibited higher prices in 2017. All livestock products registered price

increases in 2017. Hog registered a 12.77 percent price hike. For poultry, farmgate price of chicken (broiler) was reduced by 4.59 percent while duck was priced higher by 11.24 percent.

Meanwhile, prices paid by consumers for food and non-alcoholic beverages were up by an average of 3.0 percent.

Agricultural Trade. The country's earnings from agricultural exports increased by 24.61 percent in 2017. Agricultural exports contributed 9.58 percent to the total export revenue. The major agricultural exports were coconut oil, fresh banana, and pineapple and pineapple products. Their combined shares accounted to 50.55 percent of the total value of agricultural exports. Major markets were Netherlands and United States of America (USA) for coconut oil, Japan and China for fresh banana and USA for pineapple and pineapple products.

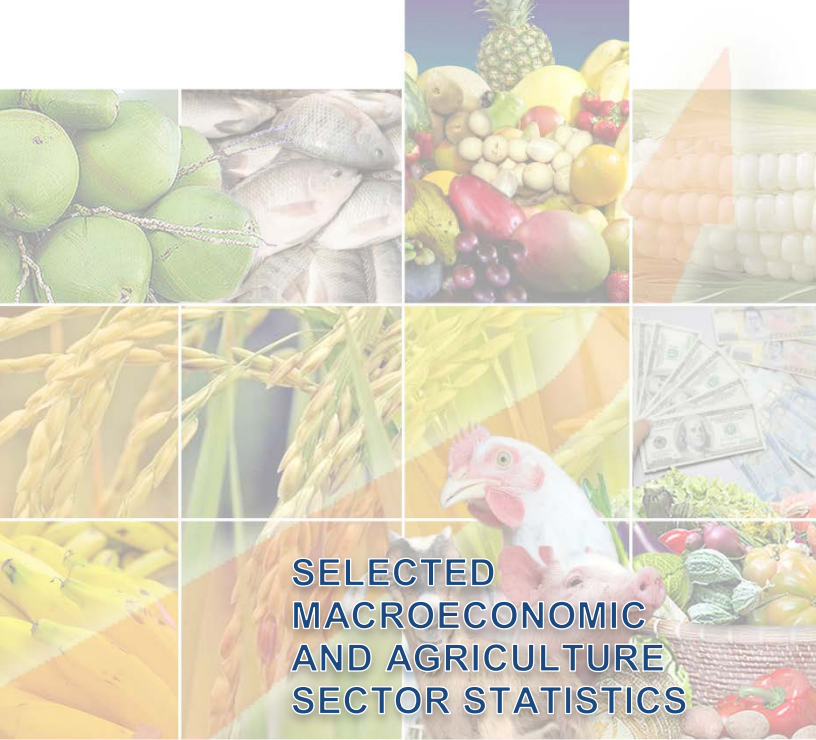
The expenditures for agricultural imports in 2017 declined by 6.04 percent. These shared 12.24 percent to the total import value. Wheat and meslin, soyabean oil/cake meal, and milk and cream and products, together, comprised 25.58 percent of the country's total agricultural imports. The USA remained as the primary source of these agricultural imports.

The Philippines maintained a negative agricultural trade balance in 2017. It indicated trade deficits with major trading partners such as Australia, USA and ASEAN countries. Agricultural trade surplus was reported in Japan and European Union.

Employment. Of the 42.78 million persons in the labor force in 2017, about 40.33 million persons or 94.27 percent were employed. The agriculture sector absorbed 10.26 million persons, representing 25.44 percent of the national employment.

Agricultural Support Service. The Philippine government spent about P119.79 billion pesos for the agriculture sector in 2017. This amount was higher by 20.16 percent from the previous year's record. Agricultural expenditures shared 3.58 percent in the national expenditures.

In 2017, a total of 1.89 million hectares of farmlands were irrigated nationwide. This area accounted for 60.35 percent of the total potential irrigable area.



**SELECTED
MACROECONOMIC
AND AGRICULTURE
SECTOR STATISTICS**

**Table 1.1 MACROECONOMIC GROWTH INDICATORS,
PHILIPPINES, 2013-2017**

(Value at constant 2000 prices)

ITEM	2013	2014	2015R	2016R	2017
GNI (million pesos)	8,152,210	8,640,203	9,143,155	9,755,087	10,394,846
<i>Growth Rate (%)</i>	7.84	5.99	5.82	6.69	6.56
GDP (million pesos)	6,750,631	7,165,478	7,600,175	8,122,741	8,665,708
<i>Growth Rate (%)</i>	7.06	6.15	6.07	6.88	6.68
GVA IN AGRICULTURE EXCLUDING FORESTRY					
(million pesos)	701,577	713,276	715,715	707,280	735,650
<i>Growth Rate (%)</i>					
<i>Agriculture Sector</i>	0.93	1.67	0.34	-1.18	4.01
<i>Crops</i>	0.11	2.41	-1.85	-3.18	6.54
<i>Livestock</i>	1.76	1.03	3.85	4.61	1.10
<i>Poultry</i>	4.23	0.38	5.66	1.31	4.47
<i>Fishing</i>	0.75	-0.16	-1.77	-3.99	-0.89
<i>Agricultural Activities and Services</i>	0.62	4.50	6.16	3.88	4.24

Source: PSA

**Table 1.1a PERFORMANCE OF AGRICULTURE BY SUBSECTOR,
PHILIPPINES, 2013-2017**

(Value at constant 2000 prices)

ITEM	2013	2014	2015R	2016R	2017
GROSS OUTPUT IN AGRICULTURE					
(million pesos)	777,178	787,607	789,735	778,645	809,477
<i>Growth Rate (%)</i>	1.08	1.34	0.27	-1.40	3.96
Crops (million pesos)	396,200	405,583	398,264	385,091	410,870
<i>Growth Rate (%)</i>	-0.04	2.37	-1.80	-3.31	6.69
Livestock (million pesos)	126,216	127,538	132,402	138,478	140,027
<i>Growth Rate (%)</i>	1.75	1.05	3.81	4.59	1.12
Poultry (million pesos)	114,833	115,164	121,804	123,501	129,206
<i>Growth Rate (%)</i>	4.26	0.29	5.77	1.39	4.62
Fisheries (million pesos)	139,928	139,323	137,265	131,576	129,374
<i>Growth Rate (%)</i>	1.16	-0.43	-1.48	-4.14	-1.67

Source: PSA

Table 1.2 POPULATION, LABOR FORCE AND EMPLOYMENT, AND WAGE RATE, PHILIPPINES, 2013-2017

ITEM	2013	2014	2015	2016	2017
POPULATION (million persons) ^{1/}	98.20	99.88	100.98	103.24	104.92
LABOR FORCE (million persons) ^{2/}	41.02	41.38	41.34	43.36	42.78
Employment	38.12	38.65	38.74	41.00	40.33
Agriculture	11.84	11.80	11.29	11.06	10.26
Unemployment	2.90	2.73	2.60	2.36	2.44
WAGE RATE IN AGRICULTURE (pesos per day)					
Nominal	233.05	249.00	267.88	276.03	---
Real	173.98	178.44	189.32	191.69	---

1/ 2012 to 2014 and 2016 data are 2010 Census-based population projections; 2015 Census of Population result

2/ Starting April 2016, the Labor Force Survey adopted the 2013 Master Sample Design as well as the population projections based on the 2010 CPH while previous survey rounds used the 2003 Master Sample Design and population projections based on the 2000 CPH.

Source: PSA

Table 1.3 PESO EXCHANGE RATE, INFLATION RATE AND PURCHASING POWER, PHILIPPINES, 2013-2017

ITEM	2013	2014	2015	2016	2017
OFFICIAL EXCHANGE RATE (pesos per US dollar)	42.45	44.40	45.50	47.49	50.40
HEADLINE INFLATION RATE (%) ^{3/}	3.0	4.1	1.4	1.8	3.2
PURCHASING POWER OF PESO	0.75	0.72	0.71	0.69	0.67

3/ 2006 as base year

Source: BSP

Table 1.4 SHARE OF AGRICULTURE IN THE NATIONAL GOVERNMENT EXPENDITURES, PHILIPPINES, 2013-2017

ITEM	2013	2014	2015	2016R	2017
NATIONAL GOVERNMENT					
(million pesos)	1,998,376	2,019,062	2,414,641	2,682,815	3,350,000
AGRICULTURE					
(million pesos)	94,166	86,807	99,788	99,688	119,786
AGRICULTURE TO NATIONAL GOVERNMENT RATIO (%)	4.71	4.30	4.13	3.72	3.58

Source: DBM

Table 1.5 SUPPLY OF FERTILIZER (All Grades) BY SOURCE, PHILIPPINES, 2013-2017

ITEM	2013	2014	2015	2016	2017
TOTAL SUPPLY ('000 mt)	1,208.7	2,710.6	2,627.9	2,648.0	2,634.6
Production ('000 mt)	335.8	388.7	27.4	259.7	312.9
Production to Total Supply Ratio (%)	27.8	14.3	1.0	9.8	11.9
Import ('000 mt)	872.9	2,321.9	2,600.5	2,388.3	2,321.7
Import to Total Supply Ratio (%)	72.2	85.7	99.0	90.2	88.1

Source: FPA

Table 1.6 SHARE OF SERVICE AREA TO TOTAL IRRIGABLE AREA, PHILIPPINES, 2013-2017

ITEM	2013	2014	2015	2016	2017
SERVICE AREA (million ha)	1.68	1.71	1.73	1.86	1.89
SERVICE AREA TO TOTAL IRRIGABLE AREA RATIO (%)	55.59	56.57	57.33	59.32	60.35

Source: NIA



**CROPS
SUBSECTOR
STATISTICS**

**Table 2.1 CROPS: VOLUME OF PRODUCTION,
PHILIPPINES, 2013-2017**

ITEM	2013	2014	2015	2016	2017
	('000 mt)				
TOTAL	85,739.4	87,007.9	84,324.6	81,631.9	91,552.5
Palay	18,439.4	18,967.8	18,149.8	17,627.2	19,276.3
Corn	7,377.3	7,770.6	7,518.8	7,218.8	7,914.9
Coconut	15,354.3	14,696.3	14,735.2	13,825.1	14,049.1
Sugarcane	24,584.8	25,029.9	22,926.4	22,370.5	29,286.9
Banana	8,646.4	8,884.9	9,083.9	8,903.7	9,166.3
Pineapple	2,458.5	2,507.1	2,582.7	2,612.5	2,671.7
Coffee	78.6	75.5	72.3	68.8	62.1
Mango	816.4	885.0	902.7	814.1	737.0
Tobacco	53.8	61.4	56.2	56.5	51.0
Abaca	65.0	68.1	70.4	71.8	68.8
Peanut	29.1	29.2	29.2	27.9	29.4
Mongo	32.4	32.1	33.6	34.0	35.3
Cassava	2,361.6	2,540.3	2,714.3	2,755.1	2,806.7
Sweet Potato	528.2	519.9	536.0	529.5	537.3
Tomato	207.7	214.6	214.8	210.7	218.8
Garlic	9.0	9.0	10.4	7.5	7.8
Onion	134.2	203.7	181.2	122.6	184.4
Cabbage	127.5	128.0	125.8	123.1	122.5
Eggplant	219.9	225.6	232.9	235.6	241.9
Calamansi	164.1	160.7	162.7	118.2	116.7
Rubber	444.8	453.1	398.1	362.6	407.0
Others	3,606.4	3,545.3	3,587.1	3,535.9	3,560.5

Source: PSA

**Table 2.2 CROPS: AREA PLANTED/HARVESTED,^{1/}
PHILIPPINES, 2013-2017**

ITEM	2013	2014	2015	2016	2017
	('000 has)				
TOTAL	13,346.4	13,354.1	13,229.2	13,091.2	13,508.0
Palay	4,746.1	4,739.7	4,656.2	4,556.0	4,811.8
Corn	2,563.7	2,611.4	2,561.9	2,484.5	2,552.6
Coconut	3,551.3	3,502.0	3,517.7	3,565.1	3,612.3
Sugarcane	437.1	432.0	421.3	410.1	437.5
Banana	446.0	442.8	443.4	442.9	446.8
Pineapple	60.8	61.6	62.8	65.2	66.0
Coffee	116.5	117.5	113.7	114.8	112.8
Mango	187.9	188.1	188.4	187.8	186.0
Tobacco	34.5	36.1	33.1	32.5	30.8
Abaca	138.4	134.8	134.2	134.4	132.5
Peanut	25.6	25.0	24.6	23.5	23.8
Mungo	43.6	43.0	41.5	41.3	41.9
Cassava	217.1	216.8	223.0	229.8	234.5
Sweet Potato	94.8	89.0	85.8	84.8	85.0
Tomato	17.2	16.7	16.2	16.2	16.5
Garlic	2.5	2.6	2.7	2.6	2.6
Onion	15.4	15.8	14.9	13.0	18.3
Cabbage	8.4	8.3	8.2	8.0	7.9
Eggplant	21.2	21.2	21.0	21.0	21.4
Calamansi	20.3	20.1	20.0	19.8	19.8
Rubber	185.5	217.7	222.6	223.3	226.3
Others	412.4	412.0	416.0 R	414.4	420.8

^{1/} Area planted for permanent crops and area harvested for temporary crops.

Source: PSA

Table 2.3 CROPS: VALUE OF PRODUCTION, PHILIPPINES, 2013-2017

ITEM	2013	2014	2015R	2016R	2017
	(million pesos, at current prices)				
TOTAL	814,630.2	926,051.6	857,197.5	882,727.0	964,654.1
Palay	314,760.9	378,218.5	311,088.2	304,598.8	350,132.0
Corn	90,150.5	100,551.6	92,480.7	85,326.4	94,295.7
Coconut	82,299.3	104,931.6	96,073.4	108,665.1	120,336.3
Sugarcane	40,073.3	40,047.8	43,101.7	44,517.4	43,909.7
Banana	117,158.9	130,696.3	136,349.8	147,445.0	147,646.4
Pineapple	17,480.1	19,730.9	20,945.7	23,564.5	25,488.5
Coffee	5,596.0	5,785.9	5,686.8	5,715.1	5,798.2
Mango	19,201.3	19,355.8	20,383.9	23,208.7	28,933.7
Tobacco	3,827.5	4,333.0	3,726.8	3,914.1	3,800.2
Abaca	2,445.4	2,948.1	3,315.9	4,233.5	4,411.5
Peanut	1,028.1	1,072.9	1,177.1	1,092.0	1,184.7
Mongo	1,476.9	1,619.7	1,824.0	1,672.3	1,887.2
Cassava	18,065.9	16,664.1	14,711.8	17,495.2	19,869.4
Sweet Potato	6,455.2	7,158.4	7,804.1	7,936.8	8,545.4
Tomato	2,984.2	2,439.7	2,888.7	3,310.4	3,578.6
Garlic	311.6	936.2	1,040.2	385.2	665.2
Onion	3,428.5	4,887.6	3,684.0	4,354.5	5,507.1
Cabbage	1,841.8	1,944.1	2,564.1	2,606.8	2,134.5
Eggplant	3,428.6	4,110.0	3,826.0	4,191.8	5,138.9
Calamansi	2,440.0	2,890.1	2,528.0	2,001.9	1,921.7
Rubber	17,605.6	11,416.9	8,102.1	8,630.5	11,212.1
Others	62,570.7	64,312.4	73,894.7	77,860.9	78,257.3

Source: PSA

Table 2.4 MAJOR CROPS: PERCENTAGE DISTRIBUTION OF PRODUCTION BY REGION, PHILIPPINES, 2017

REGION	PALAY	CORN	COCONUT	SUGARCANE
PHILIPPINES ('000 mt)	19,276.3	7,914.9	14,049.1	29,286.9
LUZON (%)	59.73	42.91	25.79	11.54
CAR	2.31	3.07	0.01	0.08
Ilocos Region	9.71	7.03	0.31	0.07
Cagayan Valley	13.78	23.22	0.53	1.56
Central Luzon	18.86	3.27	0.76	2.86
CALABARZON	2.13	1.17	11.03	6.13
MIMAROPA Region	6.02	1.53	5.50	-
Bicol Region	6.93	3.63	7.66	0.84
VISAYAS (%)	18.17	6.59	14.15	68.70
Western Visayas	11.57	3.81	3.33	57.91
Central Visayas	1.69	1.85	3.08	9.51
Eastern Visayas	4.91	0.93	7.74	1.27
MINDANAO (%)	22.10	50.50	60.06	19.76
Zamboanga Peninsula	3.63	2.96	12.10	a/
Northern Mindanao	3.87	16.26	12.86	15.67
Davao Region	2.25	3.24	13.43	1.38
SOCCSKSARGEN	6.85	15.88	6.68	2.34
Caraga	2.50	1.52	5.56	a/
ARMM	3.00	10.63	9.42	0.38

a/ Less than 0.005

Source: PSA

CROPS STATISTICS

Table 2.4a MAJOR CROPS: PERCENTAGE DISTRIBUTION OF PRODUCTION BY REGION, PHILIPPINES, 2017

REGION	PINEAPPLE	BANANA	MANGO	COFFEE
PHILIPPINES ('000 mt)	2,671.7	9,166.3	737.0	62.1
LUZON (%)	9.86	7.65	47.89	10.36
CAR	0.03	0.23	0.39	3.04
Ilocos Region	0.01	0.46	26.33	0.26
Cagayan Valley	1.31	3.36	6.60	1.25
Central Luzon	0.07	0.54	6.64	1.75
CALABARZON	3.66	1.25	5.59	3.40
MIMAROPA Region	0.02	1.02	2.09	0.26
Bicol Region	4.77	0.80	0.25	0.40
VISAYAS (%)	1.12	7.96	15.95	7.57
Western Visayas	0.63	3.18	6.63	7.14
Central Visayas	0.18	2.24	9.26	0.32
Eastern Visayas	0.30	2.54	0.07	0.10
MINDANAO (%)	89.02	84.39	36.16	82.07
Zamboanga Peninsula	0.05	2.86	11.73	0.83
Northern Mindanao	58.19	21.06	6.72	9.17
Davao Region	0.97	38.32	7.10	17.46
SOCCSKSARGEN	29.65	12.73	6.49	35.63
Caraga	0.12	3.20	2.47	2.55
ARMM	0.03	6.22	1.66	16.43

Source: PSA

Table 2.5 PALAY: PRODUCTION, AREA HARVESTED AND YIELD PER HECTARE BY ECOSYSTEM AND SEMESTER, PHILIPPINES, 2013-2017

ITEM	2013	2014	2015	2016	2017
PRODUCTION (million mt)					
TOTAL	18.44	18.97	18.15	17.63	19.28
<i>Irrigated</i>	13.82	14.41	13.94	13.54	14.56
<i>Rainfed</i>	4.62	4.56	4.21	4.09	4.72
JANUARY-JUNE	8.00	8.38	8.32	7.65	8.57
<i>Irrigated</i>	6.56	6.87	6.92	6.48	7.01
<i>Rainfed</i>	1.43	1.51	1.40	1.17	1.56
JULY-DECEMBER	10.44	10.59	9.83	9.98	10.71
<i>Irrigated</i>	7.26	7.54	7.02	7.06	7.55
<i>Rainfed</i>	3.18	3.05	2.81	2.92	3.16
AREA HARVESTED (million ha)					
TOTAL	4.75	4.74	4.66	4.56	4.81
<i>Irrigated</i>	3.24	3.25	3.23	3.18	3.30
<i>Rainfed</i>	1.51	1.49	1.42	1.37	1.52
JANUARY-JUNE	2.04	2.10	2.06	1.93	2.10
<i>Irrigated</i>	1.53	1.54	1.53	1.47	1.55
<i>Rainfed</i>	0.52	0.56	0.53	0.46	0.54
JULY-DECEMBER	2.70	2.64	2.59	2.63	2.72
<i>Irrigated</i>	1.71	1.72	1.70	1.71	1.74
<i>Rainfed</i>	0.99	0.92	0.89	0.92	0.97
YIELD PER HECTARE (mt)					
TOTAL	3.89	4.00	3.90	3.87	4.01
<i>Irrigated</i>	4.27	4.43	4.31	4.26	4.42
<i>Rainfed</i>	3.06	3.07	2.96	2.97	3.11
JANUARY-JUNE	3.91	3.99	4.04	3.96	4.09
<i>Irrigated</i>	4.30	4.47	4.51	4.40	4.52
<i>Rainfed</i>	2.77	2.69	2.65	2.55	2.87
JULY-DECEMBER	3.86	4.01	3.79	3.80	3.94
<i>Irrigated</i>	4.24	4.39	4.13	4.13	4.33
<i>Rainfed</i>	3.21	3.30	3.14	3.18	3.25

Source: PSA

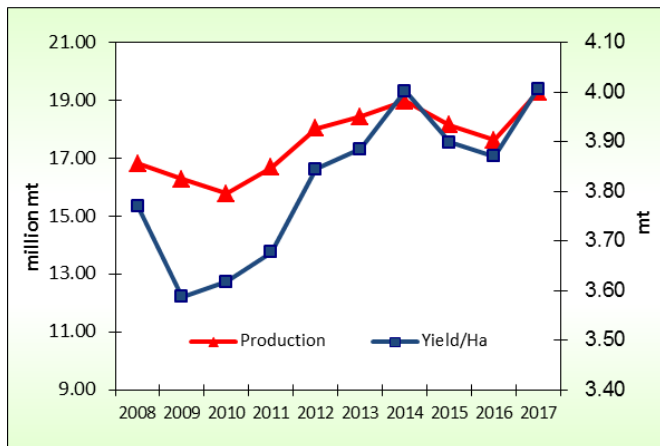


Figure 1. Palay: Production and Yield per Hectare, Philippines, 2008-2017

Table 2.6 CORN: PRODUCTION, AREA HARVESTED AND YIELD PER HECTARE BY CROPTYPE AND SEMESTER, PHILIPPINES, 2013-2017

ITEM	2013	2014	2015	2016	2017
PRODUCTION (million mt)					
TOTAL	7.38	7.77	7.52	7.22	7.91
<i>White</i>	2.13	2.26	2.13	2.02	2.10
<i>Yellow</i>	5.25	5.51	5.38	5.20	5.81
JANUARY-JUNE	3.32	3.48	3.38	2.83	3.70
<i>White</i>	0.79	0.81	0.76	0.52	0.74
<i>Yellow</i>	2.54	2.67	2.62	2.31	2.95
JULY-DECEMBER	4.05	4.29	4.14	4.39	4.22
<i>White</i>	1.34	1.46	1.37	1.51	1.36
<i>Yellow</i>	2.71	2.83	2.76	2.88	2.86
AREA HARVESTED (million ha)					
TOTAL	2.56	2.61	2.56	2.48	2.55
<i>White</i>	1.28	1.29	1.27	1.17	1.17
<i>Yellow</i>	1.29	1.32	1.30	1.31	1.38
JANUARY-JUNE	1.08	1.10	1.05	0.90	1.10
<i>White</i>	0.47	0.46	0.44	0.35	0.41
<i>Yellow</i>	0.60	0.63	0.60	0.55	0.69
JULY-DECEMBER	1.49	1.52	1.52	1.58	1.46
<i>White</i>	0.81	0.83	0.82	0.83	0.76
<i>Yellow</i>	0.68	0.69	0.69	0.76	0.69
YIELD PER HECTARE (mt)					
TOTAL	2.88	2.98	2.93	2.91	3.10
<i>White</i>	1.67	1.75	1.69	1.72	1.79
<i>Yellow</i>	4.08	4.17	4.15	3.97	4.22
JANUARY-JUNE	3.09	3.18	3.24	3.14	3.37
<i>White</i>	1.68	1.74	1.72	1.48	1.81
<i>Yellow</i>	4.19	4.23	4.36	4.18	4.31
JULY-DECEMBER	2.72	2.83	2.73	2.77	2.90
<i>White</i>	1.66	1.76	1.67	1.82	1.78
<i>Yellow</i>	3.99	4.11	3.98	3.81	4.12

Source: PSA

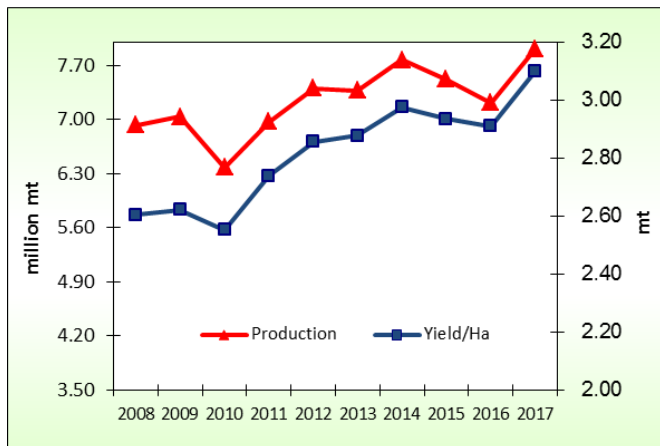
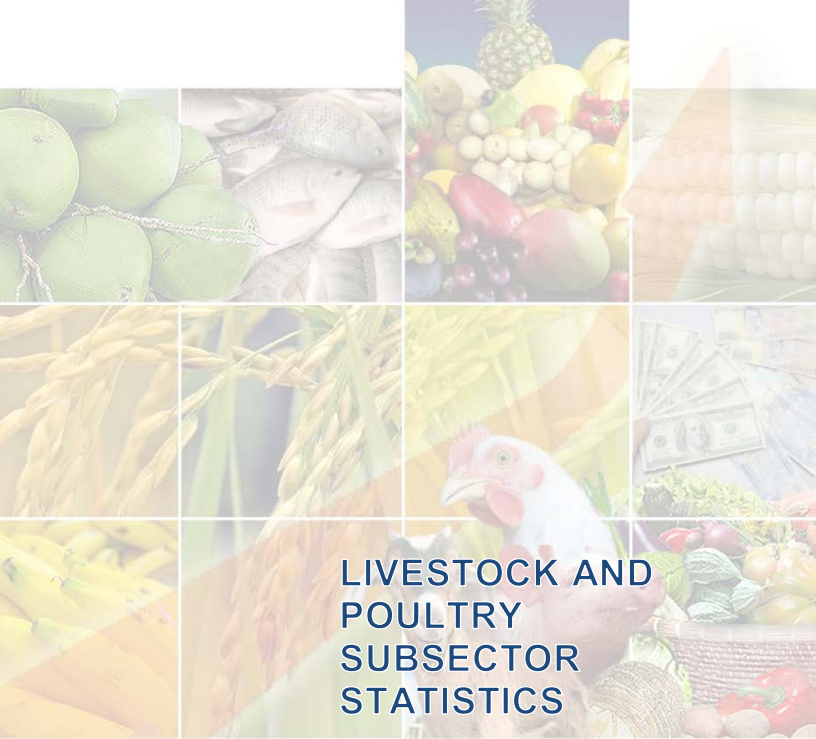


Figure 2. Corn: Production and Yield per Hectare, Philippines, 2008-2017



**LIVESTOCK AND
POULTRY
SUBSECTOR
STATISTICS**

LIVESTOCK & POULTRY STATISTICS

**Table 3.1 LIVESTOCK AND POULTRY: VOLUME OF PRODUCTION
BY TYPE, PHILIPPINES, 2013-2017**

ITEM	2013	2014	2015	2016	2017
	('000 mt)				
LIVESTOCK (liveweight)	2,507.0	2,532.5	2,627.1	2,745.4	2,775.8
Carabao	141.5	143.0	142.0	144.7	144.4
Cattle	258.5	261.3	266.9	270.4	266.3
Hog	2,012.2	2,032.3	2,120.3	2,231.7	2,265.0
Goat	75.4	76.1	77.5	77.5	77.3
Dairy	19.5	19.7	20.4	21.2	22.8
POULTRY (liveweight)	1,589.5	1,606.4	1,694.8	1,706.7	1,777.0
Chicken	1,555.1	1,571.8	1,660.8	1,674.5	1,745.9
Duck	34.5	34.6	33.9	32.2	31.1
Egg	468.8	457.2	487.0	505.9	537.8
Chicken	427.7	415.7	444.6	461.7	492.4
Duck	41.1	41.5	42.4	44.2	45.4

Source: PSA

**Table 3.2 LIVESTOCK AND POULTRY: VALUE OF PRODUCTION
BY TYPE, PHILIPPINES, 2013-2017**

ITEM	2013	2014	2015	2016	2017
	(million pesos, at current prices)				
LIVESTOCK (liveweight)	233,997.8	247,776.2	251,991.3 R	258,356.3 R	291,545.5
Carabao	10,335.1	10,740.4	11,100.6	11,333.2	12,566.6
Cattle	22,530.0	23,641.5	24,594.6	25,867.9	26,580.3
Hog	192,484.2	204,124.5	206,711.3	211,315.9	241,905.6
Goat	8,054.9	8,648.2	8,931.9	9,124.1	9,683.7
Dairy	593.7	621.5	653.0	715.3	809.3
POULTRY (liveweight)	177,991.2	191,516.4	195,245.2	202,804.1 R	215,040.7
Chicken	133,177.1	144,900.7	145,935.9	149,801.2	156,938.5
Duck	2,662.6	2,806.8	2,835.4	2,695.8	2,872.8
Chicken eggs	38,629.0	40,147.7	42,694.9	46,222.7	50,859.4
Duck eggs	3,522.6	3,661.2	3,779.0	4,084.4	4,370.0

Source: PSA

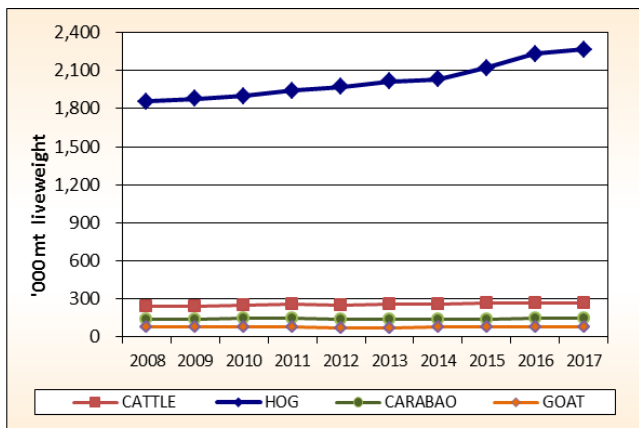


Figure 3a. Livestock: Volume of Production by Type, Philippines, 2008-2017

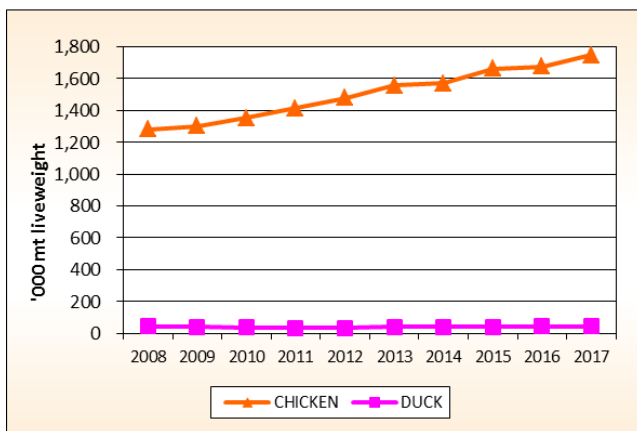


Figure 3b. Poultry: Volume of Production by Type, Philippines, 2008-2017

Table 3.3 LIVESTOCK AND POULTRY: INVENTORY BY TYPE, PHILIPPINES, AS OF JANUARY 1, 2013-2018

ITEM	2013	2014	2015	2016	2017	2018
LIVESTOCK ('000 head)						
Carabao	2,913	2,847	2,855	2,877	2,882	2,883
<i>Dairy</i>	16.4	16.8	17.3	17.8	18.8	18.9
Cattle	2,498	2,512	2,534	2,554	2,548	2,554
<i>Dairy</i>	21.1	21.6	22.5	24.5	25.7	26.1
Hog	11,843	11,802	12,000	12,479	12,428	12,604
Goat	3,694	3,696	3,674	3,663	3,710 R	3,725
<i>Dairy</i>	1.6	1.9	2.0	2.1	2.4	2.6
POULTRY ('000 birds)						
Chicken	166,386	167,671	176,469	178,793	175,317	175,772
<i>Broiler</i>	59,196	61,582	66,617	65,713	62,444	59,903
<i>Layer</i>	32,003	30,007	31,254	32,227	34,474	35,569
<i>Native</i> ^{1/}	75,188	76,082	78,598	80,853	78,399	80,300
Duck	10,135	9,886	10,067	10,519	10,842	11,220

1/ Includes gamefowls in the backyard

Source: PSA

Table 3.4 LIVESTOCK AND POULTRY: TOTAL NUMBER OF HEADS/BIRDS SLAUGHTERED/DRESSED BY TYPE, PHILIPPINES, 2013-2017

ITEM	2013	2014	2015	2016	2017
NUMBER OF ANIMALS SLAUGHTERED ('000 head)					
Carabao	457	461	454	465	466
Cattle	844	859	877	894	886
Hog	24,919	25,061	25,844 R	26,730	27,142
Goat	3,118	3,161	3,240	3,266	3,273
NUMBER OF BIRDS DRESSED ('000 birds)					
Chicken ^{2/}	945,120	969,973	1,033,155	1,051,202	1,075,672
Duck	15,413 R	15,419 R	16,062	16,294 R	15,735

2/ Consists of dressed broiler, native chicken and culled layers only

Source: PSA

Table 3.5 LIVESTOCK: PERCENTAGE DISTRIBUTION OF PRODUCTION BY REGION, PHILIPPINES, 2017

REGION	CARABAO	CATTLE	HOG	GOAT
PHILIPPINES ('000 mt)	144.4	266.3	2,265.0	77.3
LUZON (%)	35.41	45.26	53.76	40.91
CAR	2.07	1.56	1.14	1.08
Ilocos Region	6.80	10.28	3.98	13.48
Cagayan Valley	7.18	5.38	3.22	2.09
Central Luzon	4.05	6.08	19.76	12.12
CALABARZON	5.21	10.56	16.41	4.93
MIMAROPA Region	4.31	4.81	3.67	3.15
Bicol Region	5.79	6.59	5.59	4.05
VISAYAS (%)	28.54	19.89	20.10	22.31
Western Visayas	15.78	9.60	8.24	9.24
Central Visayas	5.52	9.47	8.49	12.12
Eastern Visayas	7.24	0.82	3.38	0.95
MINDANAO (%)	36.05	34.84	26.14	36.78
Zamboanga Peninsula	5.54	4.22	3.63	4.24
Northern Mindanao	6.76	14.10	8.32	9.82
Davao Region	9.12	5.00	6.69	7.99
SOCCSKSARGEN	7.49	7.01	5.20	7.60
Caraga	1.77	0.59	1.86	1.11
ARMM	5.38	3.93	0.44	6.02

Source: PSA

Table 3.6 POULTRY: PERCENTAGE DISTRIBUTION OF PRODUCTION BY REGION, PHILIPPINES, 2017

REGION	CHICKEN	CHICKEN EGGS	DUCK	DUCK EGGS
PHILIPPINES ('000 mt)	1,745.9	492.4	31.1	45.4
LUZON (%)	66.00	60.57	60.85	61.30
CAR	0.45	0.69	2.37	1.44
Ilocos Region	4.47	3.30	6.30	2.95
Cagayan Valley	3.37	2.64	7.53	6.98
Central Luzon	35.78	20.75	37.79	39.24
CALABARZON	18.82	29.45	1.88	6.27
MIMAROPA Region	0.58	1.14	1.17	1.11
Bicol Region	2.52	2.60	3.80	3.30
VISAYAS (%)	14.78	16.78	13.97	12.00
Western Visayas	5.95	6.29	10.05	10.18
Central Visayas	6.01	9.86	0.86	0.75
Eastern Visayas	2.82	0.63	3.06	1.07
MINDANAO (%)	19.23	22.65	25.18	26.71
Zamboanga Peninsula	1.83	2.53	1.01	2.89
Northern Mindanao	9.11	9.28	5.96	9.53
Davao Region	4.11	5.36	3.71	2.75
SOCCSKSARGEN	3.06	3.82	11.64	8.11
Caraga	0.84	0.98	0.47	1.36
ARMM	0.28	0.67	2.40	2.06

Source: PSA



**FISHERIES
SUBSECTOR
STATISTICS**

FISHERIES STATISTICS

Table 4.1 FISHERIES: VOLUME OF PRODUCTION, PHILIPPINES, 2013-2017

ITEM	2013	2014	2015	2016	2017
	('000 mt)				
TOTAL	4,705.4	4,689.1	4,649.3	4,355.8	4,312.1
Commercial	1,067.6	1,107.2	1,084.6	1,016.9	948.3
Municipal	1,264.4	1,244.3	1,216.5	1,137.9	1,126.0
Marine	1,062.1	1,029.4	1,011.8	976.9	962.1
Inland	202.3	214.9	204.7	161.0	163.9
Aquaculture	2,373.4	2,337.6	2,348.2	2,200.9	2,237.8
Brackishwater Fishpond ^{1/}	327.4	322.7	325.6	340.6	347.5
Freshwater Fishcage/pen	170.5	150.4	155.6	154.2	158.5
Freshwater Fishpond ^{2/}	148.3	148.9	147.6	145.7	156.6
Marine Fishcage/pen	123.8	125.0	116.8	117.6	117.8
Others	1,603.4	1,590.6	1,602.6	1,442.8	1,457.4
<i>Oyster</i>	22.1	22.3	20.3	19.5	22.9
<i>Mussel</i>	22.9	18.8	15.9	18.8	19.2
<i>Seaweed</i>	1,558.4	1,549.5	1,566.4	1,404.5	1,415.3

1/ Includes brackishwater pen/cage

2/ Includes small farm reservoir and rice fish

Source: PSA

Table 4.2 FISHERIES: VALUE OF PRODUCTION, PHILIPPINES, 2013-2017

ITEM	2013	2014	2015	2016	2017
	(million pesos, at current prices)				
TOTAL	244,551.7	241,943.8	239,702.4	228,934.1	243,936.5
Commercial	69,922.5	66,189.8	64,875.3	58,866.6	59,716.3
Municipal	80,898.0	81,805.0	81,486.2	78,925.6	83,478.7
Marine	71,909.3	71,925.1	71,718.0	71,131.6	75,346.7
Inland	8,988.7	9,879.9	9,768.2	7,794.0	8,132.0
Aquaculture	93,731.2	93,949.0	93,340.9	91,141.9	100,741.5

Source: PSA

Table 4.3 FISHERIES: PERCENTAGE DISTRIBUTION OF PRODUCTION BY REGION, PHILIPPINES, 2017

REGION	MARINE	INLAND	AQUA-CULTURE
PHILIPPINES (000 mt)	1,910.4	163.9	2,237.8
LUZON (%)	31.13	63.99	42.51
NCR - Metro Manila	3.92	-	0.54
CAR	-	0.70	0.13
Ilocos Region	1.48	1.00	5.87
Cagayan Valley	1.54	5.58	0.56
Central Luzon	1.88	8.60	10.61
CALABARZON	4.66	43.92	7.64
MIMAROPA Region	8.31	1.14	14.68
Bicol Region	9.34	3.05	2.48
VISAYAS (%)	18.80	4.51	13.90
Western Visayas	9.96	4.00	8.63
Central Visayas	4.00	0.10	3.35
Eastern Visayas	4.84	0.41	1.92
MINDANAO (%)	50.07	31.50	43.59
Zamboanga Peninsula	16.68	0.63	8.72
Northern Mindanao	4.05	2.33	3.33
Davao Region	1.67	0.13	1.10
SOCCSKSARGEN	15.33	12.30	0.57
Caraga	2.89	2.56	0.68
ARMM	9.45	13.55	29.19

Source: PSA

Table 4.4 FISHERIES: VOLUME OF PRODUCTION BY MAJOR SPECIES, PHILIPPINES, 2013-2017

SECTOR/ MAJOR SPECIES	2013	2014	2015	2016	2017
	('000 mt)				
MARINE SPECIES	2,129.7	2,136.6	2,096.4	1,993.9	1,910.4
Roundscad	270.8	260.6	225.1	211.8	183.1
Skipjack	212.2	233.9	233.5	220.1	247.6
Yellowfin tuna	130.1	139.9	143.4	103.0	106.9
Frigate tuna	134.2	134.1	137.7	133.9	122.1
Indian sardines	229.2	256.1	290.7	280.5	241.5
Fimbriated sardines	89.1	93.3	83.8	76.6	79.4
Big-eyed scad	117.1	116.4	116.8	112.8	109.2
Indian mackerel	85.2	78.2	74.1	63.3	60.1
Anchovies	68.4	71.9	64.0	55.8	50.2
Squid	57.2	55.7	53.0	52.1	49.9
Slipmouth	50.8	50.6	48.1	48.6	47.3
Eastern little tuna	36.1	35.5	34.7	36.9	37.1
Indo-pacific mackerel	43.2	39.6	38.9	38.3	35.5
Threadfin bream	42.1	38.8	39.2	39.7	39.6
Crevalle	37.3	35.8	35.3	35.3	29.4
Blue crab	26.2	27.2	25.9	28.3	30.8
Cavalla	29.8	28.0	28.9	25.1	24.0
Flying fish	20.5	19.4	18.5	17.2	15.2
Siganid	28.2	26.4	25.5	23.7	23.6
Snapper	20.4	18.5	17.2	15.8	16.9
Bigeye tuna	11.8	11.2	10.9	15.2	27.6
Other species	389.6	365.5	351.2	359.8	333.4
AQUACULTURE SPECIES	2,373.4	2,337.6	2,348.2	2,200.9	2,237.8
Milkfish	401.1	390.2	384.4	398.1	411.1
Tilapia	268.8	259.2	261.2	259.0	267.7
Tiger prawn	49.5	47.8	49.5	49.1	46.1
Carp	18.3	16.8	16.9	16.8	14.6
Oyster	22.1	22.4	20.3	19.5	23.0
Mussel	22.9	18.8	16.0	18.8	19.2
Seaweed	1,558.4	1,549.6	1,566.4	1,404.5	1,415.3

Table 4.4 FISHERIES: VOLUME OF PRODUCTION ..(Concluded)

SECTOR/ MAJOR SPECIES	2013	2014	2015	2016	2017
	('000 mt)				
Mud crab	15.8	16.2	16.2	16.9	18.1
Catfish	3.8	3.6	3.6	3.7	4.2
Other species	12.7	13.1	13.7	14.4	18.5
INLAND SPECIES	202.3	214.9	204.7	161.0	163.9
Tilapia	48.9	54.2	50.5	41.7	43.2
Carp	15.4	15.6	14.4	13.1	13.3
Snail	55.2	51.8	50.8	47.6	46.7
Mudfish	10.9	11.2	11.7	8.8	9.5
Gourami	6.8	6.4	5.7	4.3	4.2
Freshwater goby	5.3	5.7	4.0	3.3	3.0
Freshwater catfish (Hito)	6.2	6.2	6.3	5.7	5.7
Freshwater shrimp	5.4	5.4	5.2	3.1	3.0
Freshwater catfish (Kanduli)	1.9	1.8	2.0	1.8	2.3
Other fish species	32.8	43.5	42.0	20.3	22.4
Other crustaceans	5.0	5.4	5.2	4.9	5.0
Other molluscs	8.5	7.7	6.9	6.4	5.6

Source: PSA

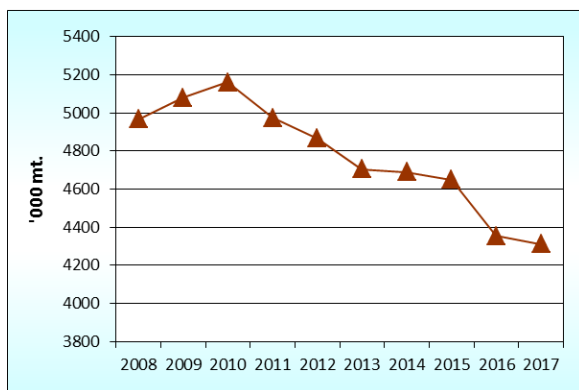


Figure 4. Fisheries: Volume of Production, Philippines, 2008-2017

Table 4.5 AQUACULTURE: VALUE OF PRODUCTION BY CULTURE ENVIRONMENT AND SPECIES, PHILIPPINES, 2013-2017

ENVIRONMENT/ SPECIES	2013	2014	2015	2016	2017
	(million pesos, at current prices)				
ALL TYPES OF ENVIRONMENT	93,731.2	93,949.0	93,340.9	91,142.0	100,741.5
Brackishwater					
Fishpond ^{1/}	48,552.4	48,713.7	50,661.9	52,110.1	55,686.4
Freshwater					
Fishcage/pen	11,407.3	10,534.9	10,882.8	10,375.4	11,838.5
Freshwater					
Fishpond ^{2/}	10,862.8	11,138.7	11,025.6	10,184.5	11,672.6
Marine					
Fishcage/pen	12,568.0	12,641.7	12,059.0	11,890.0	12,636.5
Others ^{3/}	10,340.7	10,920.0	8,711.6	6,581.9	8,907.5
ALL SPECIES	93,731.2	93,949.0	93,340.9	91,142.0	100,741.5
Milkfish	35,358.7	35,606.8	35,143.5	35,042.3	37,623.6
Tilapia	19,215.6	19,395.4	19,390.2	18,329.4	20,466.3
Tiger prawn	19,718.9	19,299.1	20,788.9	20,926.0	21,459.7
Mud crab	4,799.9	5,135.3	5,380.7	6,255.4	7,265.9
Carp	612.4	468.2	538.1	413.6	358.7
Catfish	359.3	344.2	364.7	387.9	446.9
Oyster	170.9	179.5	180.9	203.4	259.8
Mussel	252.6	222.7	215.4	273.8	346.3
Seaweed	9,903.2	10,517.7	8,315.3	6,104.7	8,301.4
Other species	3,339.7	2,780.1	3,023.2	3,205.5	4,212.9

1/ Includes brackishwater pen/cage

2/ Includes small farm reservoir and rice fish

3/ Others include seaweeds, mussels and oyster

Source: PSA



**PRODUCTION
COSTS AND
RETURNS**

PRODUCTION COSTS AND RETURNS

Table 5.1 ALL PALAY: PRODUCTION COSTS AND RETURNS BY SEASON, PHILIPPINES, 2017

ITEM	DRY	WET	AVERAGE
	(pesos per hectare)		
Gross Returns	73,974	72,254	72,950
Cash Costs	21,061	21,051	21,081
Non-Cash Costs	16,412	17,103	16,786
Imputed Costs	11,307	12,357	11,877
Total Costs	48,781	50,511	49,744
Net Returns	25,193	21,743	23,206
.....			
Net Profit-Cost Ratio	0.52	0.43	0.47
Cost Per Kilogram (pesos)	11.93	12.81	12.42

Source: PSA

Table 5.1a IRRIGATED PALAY: PRODUCTION COSTS AND RETURNS BY SEASON, PHILIPPINES, 2017

ITEM	DRY	WET	AVERAGE
	(pesos per hectare)		
Gross Returns	81,740	79,339	80,450
Cash Costs	24,101	23,824	23,996
Non-Cash Costs	17,926	18,198	18,369
Imputed Costs	11,478	12,614	12,071
Total Costs	53,506	54,636	54,435
Net Returns	28,234	24,703	26,015
.....			
Net Profit-Cost Ratio	0.53	0.45	0.48
Cost Per Kilogram (pesos)	11.84	12.62	12.32

Source: PSA

Table 5.1b NON-IRRIGATED PALAY: PRODUCTION COSTS AND RETURNS BY SEASON, PHILIPPINES, 2017

ITEM	DRY	WET	AVERAGE
	(pesos per hectare)		
Gross Returns	51,840	59,551	56,657
Cash Costs	14,803	17,170	16,195
Non-Cash Costs	12,612	15,273	14,426
Imputed Costs	10,989	11,988	11,562
Total Costs	38,404	44,431	42,182
Net Returns	13,436	15,120	14,475
.....			
Net Profit-Cost Ratio	0.35	0.34	0.34
Cost Per Kilogram (pesos)	13.40	13.68	13.56

Source: PSA

Table 5.2 CORN: PRODUCTION COSTS AND RETURNS BY TYPE, PHILIPPINES, 2017

ITEM	WHITE	YELLOW	ALL
	(pesos per hectare)		
Gross Returns	22,957	48,898	34,639
Cash Costs	6,500	28,565	14,701
Non-Cash Costs	1,623	2,678	1,997
Imputed Costs	7,023	8,534	5,757
Total Costs	15,166	39,777	22,455
Net Returns	7,792	9,121	12,185
.....			
Net Profit-Cost Ratio	0.51	0.23	0.54
Cost Per Kilogram (pesos)	8.46	9.44	7.73

Source: PSA

PRODUCTION COSTS AND RETURNS

Table 5.3 OTHER MAJOR CROPS: PRODUCTION COSTS AND RETURNS, PHILIPPINES, 2017

ITEM	MANGO ^{1/}	PINEAPPLE	COFFEE ^{1/}
	(pesos per hectare)		
Gross Returns	166,681	384,863	51,330
Cash Costs	44,680	67,338	25,737
Non-Cash Costs	6,977	1,035	1,204
Imputed Costs	31,218	15,789	9,986
Total Costs	82,875	84,162	36,927
Net Returns	83,806	300,701	14,403
.....			
Net Profit-Cost Ratio	1.01	3.57	0.39
Cost Per Kilogram (pesos)	20.92	2.08	67.12

^{1/} Cost of production refers to maintenance cost

Source: PSA

Table 5.3a OTHER MAJOR CROPS: PRODUCTION COSTS AND RETURNS, PHILIPPINES, 2017

ITEM	ONION		GARLIC
	Red	Multiplier	
(pesos per hectare)			
Gross Returns	408,255	348,207	320,008
Cash Costs	112,312	60,254	52,585
Non-Cash Costs	8,073	31,794	25,505
Imputed Costs	22,975	23,713	45,376
Total Costs	143,360	115,761	123,466
Net Returns	264,895	232,446	196,542
.....			
Net Profit-Cost Ratio	1.85	2.01	1.59
Cost Per Kilogram (pesos)	14.11	11.74	40.92

Source: PSA



**PRICE
STATISTICS**

PRICE STATISTICS

Table 6.1 CONSUMER PRICE INDEX ^{1/}, PHILIPPINES, 2013-2017

ITEM	2013	2014	2015	2016	2017
ALL ITEMS	102.6	106.3	107.0	108.4	111.5
Food and Non-Alcoholic Beverages	102.5	108.5	110.5	112.3	115.7
Alcoholic Beverages and Tobacco	128.1	135.9	140.0	146.5	156.6
Clothing and Footwear	103.2	106.8	109.5	111.8	114.5
Housing, Water, Electricity, Gas and Other Fuels	101.8	104.4	103.1	103.6	106.4
Furnishings, Household Equipment and Routine Maintenance of the House	103.4	106.3	108.2	110.2	112.7
Health	102.7	105.1	107.2	109.5	112.4
Transport	100.0	100.5	95.1	93.8	98.5
Communication	100.1	100.2	100.2	100.5	100.8
Recreation and Culture	104.1	107.3	108.1	109.1	110.4
Education	104.1	108.7	112.8	116.2	119.1
Restaurants and Miscellaneous Goods and Services	102.5	104.2	105.7	107.5	109.3

1/ 2012 as base year

Source: PSA

Table 6.2 PRODUCER PRICE INDEX FOR AGRICULTURE ^{2/}, PHILIPPINES, 2013-2017

ITEM	2013	2014	2015	2016	2017
ALL ITEMS	141.0	156.1	147.1	149.8	---
Cereals	156.1	179.6	157.9	157.6	---
Vegetables & Legumes	121.1	123.9	131.1	148.9	---
Rootcrops and Tubers	147.2	131.0	127.1	147.5	---
Fruits	146.9	155.2	160.6	195.2	---
Commercial Crops	138.6	173.5	154.0	177.8	---
Livestock	138.0	147.1	141.7	138.8	---
Poultry	124.4	134.1	134.0	133.8	---
Fishery	127.6	132.3	129.5	124.7	---

2/ 2006 as base year

Source: PSA

**Table 6.3 CEREALS: AVERAGE DOMESTIC AND WORLD PRICES
BY TYPE, PHILIPPINES, 2013-2017**

ITEM	2013	2014	2015	2016	2017P
DOMESTIC PRICE (pesos per kilogram)					
PALAY/RICE , Well milled					
<i>Farm</i>	16.93	20.07	17.33	17.43	18.21
<i>Wholesale</i>	34.49	39.51	38.14	37.83	38.82
<i>Retail</i>	36.87	42.32	42.04	41.72	42.55
CORNGRAIN					
Corngrain, white					
<i>Farm</i>	13.81	13.90	13.07	12.30	12.81
<i>Wholesale</i>	15.43	14.79	14.08	13.10	14.02
<i>Retail</i>	18.97	21.88	23.23	22.77	20.19
Corngrain, yellow					
<i>Farm</i>	11.62	12.73	12.01	11.78	11.60
<i>Wholesale</i>	15.93	14.31	15.52	15.63	14.88
<i>Retail</i>	22.04	20.76	20.70	20.36	19.58
WORLD PRICE (US dollar per kilogram)					
CEREALS					
Rice					
<i>5% brokens</i>	0.51	0.42	0.39	0.40	0.39
<i>25% brokens</i>	0.47	0.38	0.37	0.39	0.38
Corn					
<i>Yellow</i>	0.26	0.19	0.17	0.16	0.15

Sources: PSA and World Bank

PRICE STATISTICS

Table 6.4 SELECTED CROPS: AVERAGE ANNUAL PRICES,
PHILIPPINES, 2013-2017

ITEM	2013	2014	2015	2016	2017P
	(pesos per kilogram)				
COCONUT					
Copra (corriente)					
<i>Farm</i>	15.88	24.67	21.28 R	30.01	35.92
<i>Wholesale</i>	13.16	19.61	17.50	25.59	31.36
Matured nuts					
<i>Farm</i>	5.30	7.14	6.46 R	7.84	8.62
<i>Wholesale</i>	16.34	17.96	22.59	23.78	23.41
<i>Retail</i>	17.62	20.53	20.87	22.20	24.15
Young nuts					
<i>Farm</i>	6.96	7.93	8.40 R	7.12	8.39
COFFEE, dry beans					
Robusta					
<i>Farm</i>	67.84	76.10	75.25 R	77.16	86.75
<i>Wholesale</i>	70.15	-	-	-	-
Arabica					
<i>Farm</i>	83.94	82.09	96.21	93.37	113.37
Excelsa					
<i>Farm</i>	65.64	68.35	73.99	76.29	88.75
RUBBER (cup lump)					
<i>Farm</i>	40.35	26.37	20.30 R	22.33	29.18
BANANA					
Bungulan					
<i>Farm</i>	8.22	9.93	10.22	12.35	12.66
<i>Wholesale</i>	7.28	13.28	15.91	16.17	13.94
Latundan					
<i>Farm</i>	10.12	11.42	11.72	12.53	12.21
<i>Wholesale</i>	17.30	22.88	22.78 R	25.20	22.13
<i>Retail</i>	23.50	33.02	33.75	34.58	35.06

Table 6.4 SELECTED CROPS: AVERAGE ANNUAL ..(Concluded)

ITEM	2013	2014	2015	2016	2017P
	(pesos per kilogram)				
Lakatan					
<i>Farm</i>	16.78	18.32	18.68	20.10	19.37
<i>Wholesale</i>	28.08	38.44	38.00 R	42.70	38.79
<i>Retail</i>	37.17	49.02	49.79	51.36	51.07
Saba					
<i>Farm</i>	8.35	8.34	8.47	9.99	9.92
<i>Wholesale</i>	13.77	16.01	17.56 R	22.07	22.54
<i>Retail</i>	17.64	24.24	25.95	27.70	28.47
PINEAPPLE, Hawaiian					
<i>Farm</i>	7.08	7.86	8.11	8.97	9.52
<i>Wholesale</i>	10.81	9.72	11.23 R	13.75	12.68
<i>Retail</i>	16.69	16.86	17.53	18.23	18.95
MANGO, Carabao					
<i>Farm</i>	28.64	30.42	30.88	38.92	48.43
<i>Wholesale</i>	48.79	51.34	58.56 R	79.48	77.90
<i>Retail</i>	66.53	72.30	80.94	95.85	113.25
CASSAVA					
<i>Farm</i>	7.63	6.52	5.45	6.29	-
<i>Wholesale</i>	8.61	8.49	10.27	9.51	8.78
SWEET POTATO					
<i>Farm</i>	12.19	13.72	14.50	14.99	15.88
<i>Wholesale</i>	17.40	18.48	21.20 R	23.10	22.73
<i>Retail</i>	28.15	29.48	32.26	35.41	35.96

Source: PSA

PRICE STATISTICS

Table 6.5 SELECTED LIVESTOCK AND POULTRY: AVERAGE ANNUAL PRICES, PHILIPPINES, 2013-2017

ITEM	2013	2014	2015	2016	2017
	(pesos per kilogram)				
LIVESTOCK ^{3/}					
CARABAO					
<i>Farm (liveweight)</i>	72.98	74.99	78.02	78.04	86.84
<i>Wholesale selling</i>	64.34	65.16	66.46	-	-
CATTLE					
<i>Farm (liveweight)</i>	87.12	90.40	92.16	95.55	99.66
<i>Wholesale selling</i>	76.90	78.82	79.44	-	-
<i>Retail (beef lean meat)</i>	233.62	240.05	243.69	250.08	264.95
HOG					
<i>Farm (liveweight)</i>	95.71	100.48	97.53	94.64	106.73
<i>Wholesale selling</i>	99.90	109.02	104.75	-	-
<i>Retail (pork lean meat)</i>	179.36	191.59	190.85	188.59	203.19
GOAT					
<i>Farm</i>	106.74	113.51	115.29	117.74	125.13
<i>Wholesale selling</i>	96.37	99.36	99.88	-	-
POULTRY					
CHICKEN (broiler) ^{3/}					
<i>Farm</i>	87.12	91.06	93.69	96.61	92.18
<i>Wholesale</i> ^{4/}	81.43	95.60	86.89 R	97.98	95.47
<i>Retail</i>	112.86	119.80	123.03	124.49	126.97
DUCK ^{3/}					
<i>Farm</i>	90.85	93.58	98.96	101.59	113.01

^{3/} Backyard

^{4/} Metro Manila

Source: PSA

Table 6.6 SELECTED FISH SPECIES: AVERAGE ANNUAL PRICES, PHILIPPINES, 2013-2017

ITEM	2013	2014	2015	2016	2017
	(pesos per kilogram)				
FISHERY PRODUCTS					
BANGUS (Milkfish)					
<i>Wholesale</i>	100.46	101.47	104.88 R	104.47	107.48
<i>Retail</i>	123.84	123.51	126.75	126.47	133.12
DILIS (Anchovies)					
<i>Wholesale</i>	50.42	49.01	55.90	57.94	60.05
<i>Retail</i>	84.05	86.26	86.96	90.10	99.91
GALUNGGONG (Roundscad)					
<i>Wholesale</i>	82.29	86.30	91.42 R	90.39	97.24
<i>Retail</i>	108.02	113.84	118.27	116.59	127.5
SAPSAP (Slipmouth)					
<i>Wholesale</i>	83.80	90.85	94.77	112.65	109.72
<i>Retail</i>	128.14	132.03	128.81	164.40	183.59
TILAPIA					
<i>Wholesale</i>	74.07	78.70	80.10 R	81.48	83.28
<i>Retail</i>	98.17	102.69	106.36	106.89	110.59
TULINGAN (Frigate Tuna)					
<i>Wholesale</i>	88.64	94.00	93.99 R	90.69	96.38
<i>Retail</i>	111.57	113.47	116.70	112.06	121.39

Source: PSA

PRICE STATISTICS

Table 6.7 FERTILIZERS: AVERAGE DEALERS' PRICES BY GRADE, PHILIPPINES, 2013-2017

ITEM	2013	2014	2015	2016	2017
	(pesos per 50 kg bag)				
UREA	1,158.02	1,094.15	1,048.43	951.43	912.96
AMMOSUL	727.91	630.68	598.87	572.52	560.24
COMPLETE	1,227.86	1,197.01	1,184.61	1,143.81	1,096.43
AMMOPHOS	1,077.52	1,029.69	997.98	955.54	907.34

Source: PSA

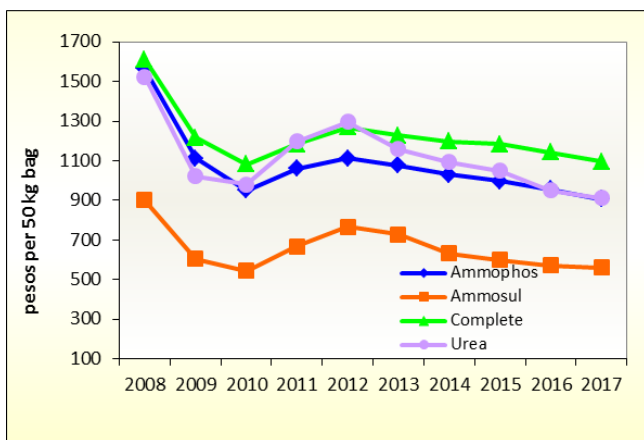


Figure 5. Fertilizers: Average Dealers' Prices by Grade, Philippines, 2008-2017



**AGRICULTURAL
FOREIGN TRADE
STATISTICS**

Table 7.1 TOP AGRICULTURAL EXPORTS: VOLUME AND VALUE, PHILIPPINES, 2013-2017

ITEM	2013	2014	2015	2016	2017
VOLUME OF TOP EXPORTS ('000 mt)					
Coconut Oil	1,080.84	892.30	940.15	755.61	983.59
Bananas, <i>Fresh</i>	3,266.55	3,630.98	1,795.22	1,733.84	2,855.64
Pineapple & Products	816.64	783.33	713.94	1,126.96	880.29
Tuna	165.76	127.31	104.16	102.06	307.39
Desiccated Coconut	92.81	84.30	52.02	93.41	116.08
Centrifugal Sugar	471.27	206.83	38.75	181.76	440.73
Tobacco Manufactured	34.96	44.17	28.95	25.86	26.52
Seaweeds & Carageenan	55.70	41.58	38.96	39.85	35.49
Tobacco Unmanufactured	31.60	38.02	32.85	23.91	57.45
Rubber	69.93	85.93	82.95	67.61	133.31
VALUE OF TOTAL AGRICULTURAL EXPORTS					
(FOB in million US\$)	6,400.03	6,542.95	5,131.85	5,280.24	6,579.51
VALUE OF TOP EXPORTS (FOB in million US\$)					
Coconut Oil	1,005.58	1,220.21	1,168.22	1,151.69	1,614.77
Bananas, <i>Fresh</i>	962.58	1,129.89	657.87	730.36	1,128.58
Pineapple & Products	425.38	434.99	574.24	710.66	582.77
Tuna	618.62	501.03	350.30	277.52	521.55
Desiccated Coconut	198.67	254.16	160.05	210.04	340.83
Centrifugal Sugar	272.88	107.14	21.77	99.04	203.55
Tobacco Manufactured	248.02	325.06	207.61	161.18	188.96
Seaweeds & Carageenan	218.58	256.65	202.60	199.25	174.29
Tobacco Unmanufactured	92.34	121.82	101.04	91.68	108.76
Rubber	76.97	79.63	61.89	37.68	103.07

Source: PSA

Table 7.2 TOP AGRICULTURAL EXPORTS: VOLUME AND VALUE BY MAJOR COUNTRY OF DESTINATION, PHILIPPINES, 2017

COMMODITY/ COUNTRY OF DESTINATION	VOLUME	VALUE	% SHARE (VALUE)
VOLUME AND VALUE ('000 mt, FOB in million US\$)			
COCONUT OIL (crude & refined)	983.59	1,614.77	100.00
Netherlands	446.11	676.32	41.88
United States of America	322.48	553.34	34.27
China, People's Republic of	40.80	73.93	4.58
Japan (Excludes Okinawa)	40.88	71.33	4.42
Italy	42.49	68.24	4.23
Others	90.83	171.62	10.63
BANANAS, Fresh	2,855.64	1,128.58	100.00
Japan (Excludes Okinawa)	821.39	390.71	34.62
China, People's Republic of	745.64	288.97	25.60
Korea, Republic of South	376.66	176.56	15.64
United Arab Emirates	284.06	95.16	8.43
Iran	322.09	78.55	6.96
Others	305.81	98.63	8.74
PINEAPPLE AND PINEAPPLE PRODUCTS			
PRODUCTS	880.29	582.77	100.00
United States of America	274.15	195.57	33.56
Japan (Excludes Okinawa)	181.44	78.10	13.40
Korea, Republic of South	122.17	63.27	10.86
China, People's Republic of	100.60	51.37	8.82
Netherlands	7.89	16.17	2.78
Others	194.03	178.29	30.59
TUNA	307.39	521.55	100.00
Germany	28.86	100.98	19.36
UK Great Britain & N. Ireland	19.89	71.20	13.65
United States of America	123.80	70.94	13.60
Japan (Excludes Okinawa)	13.18	62.49	11.98
Spain	17.21	60.74	11.65
Others	104.46	155.20	29.76

Table 7.2 TOP AGRICULTURAL EXPORTS: VOLUME ..(Continued)

COMMODITY/ COUNTRY OF DESTINATION	VOLUME	VALUE	% SHARE (VALUE)
DESSICATED COCONUT	116.08	340.83	100.00
United States of America	30.13	92.67	27.19
Netherlands	16.74	45.65	13.39
Australia	7.12	22.44	6.59
Canada	6.54	18.76	5.50
UK Great Britain & N. Ireland	5.77	16.72	4.91
Others	49.79	144.59	42.42
CENTRIFUGAL SUGAR	440.73	203.55	100.00
United States of America	225.56	127.56	62.67
China, People's Republic of	100.39	33.56	16.49
Japan (Excludes Okinawa)	51.15	17.24	8.47
Korea, Republic of South	32.47	12.24	6.01
Vietnam	29.25	10.64	5.23
Others	1.92	2.32	1.14
TOBACCO MANUFACTURED	26.52	188.96	100.00
Thailand	6.86	62.05	32.84
Korea, Republic of South	5.76	47.50	25.14
Singapore	4.58	24.78	13.11
Malaysia	3.41	18.32	9.70
Vietnam	2.63	15.37	8.13
Others	3.29	20.94	11.08
SEAWEEDS & CARAGEENAN	35.49	174.29	100.00
United States of America	9.85	38.08	21.85
Belgium	1.86	10.80	6.20
Denmark	1.03	9.84	5.65
Thailand	1.05	9.42	5.40
Mexico	1.78	9.02	5.18
Others	19.92	97.13	55.73

Table 7.2 TOP AGRICULTURAL EXPORTS: VOLUME ..(Concluded)

COMMODITY/ COUNTRY OF DESTINATION	VOLUME	VALUE	% SHARE (VALUE)
TOBACCO UNMANUFACTURED	57.45	108.76	100.00
Malaysia	8.09	16.60	15.27
Indonesia	4.37	15.68	14.41
Korea, Republic of South	3.27	11.65	10.71
United States of America	3.76	9.34	8.59
Belgium	2.18	7.56	6.95
Others	35.78	47.93	44.07
RUBBER	133.31	103.07	100.00
Malaysia	121.39	86.13	83.57
Korea, Republic of South	2.76	4.89	4.74
China, People's Republic of	4.02	4.39	4.26
India	2.59	3.89	3.77
Vietnam	1.59	2.07	2.01
Others	0.96	1.71	1.66

Source: PSA

Table 7.3 EXPORTS OF SELECTED COMMODITIES: VOLUME AND VALUE, PHILIPPINES, 2013-2017

ITEM	2013	2014	2015	2016	2017
VOLUME OF EXPORTS ('000 mt)					
Abaca	0.03	0.11	0.39	0.09	0.15
Nata de Coco	3.58	3.95	1.54	3.96	5.12
Asparagus	0.63	0.37	0.22	a/	-
Papaws (fresh/dried)	8.93	5.11	1.83	1.59	2.25
Shallots	3.52	2.55	0.92	0.60	0.78
Onions (fresh/dried/powdered)	0.05	0.16	0.01	0.02	a/
Kaong	0.08	1.45	0.47	0.19	0.61
Manioc (Cassava) & Tapioca	1.03	1.89	1.52	0.79	1.42
Coconut (Young)	2.51	1.30	2.69	3.18	1.20
Yam (fresh/dried/powdered)	1.24	0.79	0.10	0.04	0.55
Garlic	0.06	0.17	0.13	0.18	0.35
VALUE OF EXPORTS (FOB in million US\$)					
Abaca	5.11	14.71	16.28	20.24	36.06
Nata de Coco	3.57	3.35	1.49	3.58	5.26
Asparagus	1.59	1.13	0.49	a/	-
Papaws (fresh/dried)	6.81	4.83	2.23	1.86	2.58
Shallots	1.54	1.41	0.61	0.53	0.73
Onions (fresh/dried/powdered)	0.07	0.13	0.07	0.02	a/
Kaong	0.13	1.65	0.52	0.34	0.99
Manioc (Cassava) & Tapioca	1.60	2.56	1.43	0.87	1.54
Coconut (Young)	1.62	1.12	1.15	1.46	0.53
Yam (fresh/dried/powdered)	1.57	0.80	0.15	0.11	0.53
Garlic	0.34	1.21	0.91	1.37	2.97

a/ Less than 0.005

Source: PSA

Table 7.4 TOP AGRICULTURAL IMPORTS: VOLUME AND VALUE, PHILIPPINES, 2013-2017

ITEM	2013	2014	2015	2016	2017
VOLUME OF TOP IMPORTS ('000 mt)					
Wheat (Including Spelt) and Meslin	2,472.61	3,095.30	4,770.39	5,243.11	5,827.94
Soyabean Oil/Cake Meal	1,513.32	1,991.08	1,954.98	2,628.23	2,519.70
Milk & Cream & Products	296.00	277.59	350.72	431.43	412.64
Coffee	90.89	70.68	91.18	190.83	197.70
Meat of Bovine, <i>Frozen</i>	75.44	100.85	103.46	113.05	120.08
Fertilizer Manufactured	978.62	1,218.62	1,050.63	1,270.72	1,482.71
Rice	399.08	1,089.14	1,481.50	609.36	888.09
Urea	637.04	773.21	672.08	968.99	1,019.86
Chicken Meat, <i>Frozen</i>	95.55	166.55	190.53	235.77	253.71
Tuna	65.06	88.52	156.05	129.82	146.75
VALUE OF TOTAL AGRICULTURAL IMPORTS					
(CIF in million US\$)	7,931.14	9,631.24	10,965.76	12,518.84	11,762.47
VALUE OF TOP IMPORTS (CIF in million US\$)					
Wheat (Including Spelt) and Meslin	868.93	1,030.44	1,319.24	1,229.81	1,362.74
Soyabean Oil/Cake Meal	758.88	971.14	888.40	1,053.93	983.69
Milk & Cream & Products	751.22	763.34	650.15	641.35	662.10
Coffee	214.62	246.45	298.13	483.04	513.87
Meat of Bovine, <i>Frozen</i>	235.51	336.34	324.89	347.66	394.01
Fertilizer Manufactured	349.64	352.73	319.47	317.09	376.36
Rice	172.31	453.77	615.70	278.87	357.72
Urea	221.36	254.28	206.75	232.89	261.65
Chicken Meat, <i>Frozen</i>	96.06	167.86	179.32	221.99	235.80
Tuna	90.94	86.96	190.76	189.02	226.75

Source: PSA

Table 7.5 OTHER MAJOR AGRICULTURAL IMPORTS: VOLUME AND VALUE, PHILIPPINES, 2013-2017

ITEM	2013	2014	2015	2016	2017
VOLUME OF IMPORTS ('000 mt)					
LIVESTOCK & POULTRY					
Live Bovine (million head)	0.02	0.02	0.03	0.02	a/
Meat of Bovine, <i>frozen</i>	75.44	100.85	103.24	113.05	120.08
Live Chicken (million head)	0.51	-	-	-	-
Chicken Meat, <i>frozen</i>	95.73	166.55	190.53	235.77	253.71
VEGETABLES					
Garlic	5.22	32.71	74.14	63.22	72.56
Onion	9.45	10.53	38.94	137.78	38.05
Cauliflower and Headed Broccoli	0.02	0.03	0.02	0.04	0.18
Potatoes	4.39	6.86	20.18	20.27	20.90
VALUE OF IMPORTS (CIF in million US\$)					
LIVESTOCK & POULTRY					
Live Bovine	18.57	22.12	32.97	19.19	4.16
Meat of Bovine, <i>frozen</i>	235.51	336.28	323.43	347.66	394.01
Live Chicken	6.32	-	-	-	-
Chicken Meat, <i>frozen</i>	96.21	167.86	179.32	221.99	235.80
VEGETABLES					
Garlic	3.26	12.89	25.43	24.83	28.05
Onion	3.38	5.05	12.13	27.49	12.43
Cauliflower and Headed Broccoli	0.05	0.04	0.02	0.06	0.21
Potatoes	1.31	2.53	7.61	8.92	9.66

a/ Less than 0.005

Source: PSA

Table 7.6 TOP AGRICULTURAL IMPORTS: VOLUME AND VALUE, BY MAJOR COUNTRY OF ORIGIN, PHILIPPINES, 2017

COMMODITY/ COUNTRY OF ORIGIN	VOLUME	VALUE	% SHARE (VALUE)
VOLUME AND VALUE ('000 mt, CIF in million US\$)			
WHEAT (including spelt) and MESLIN			
	5,827.94	1,362.74	100.00
United States of America	2,687.36	686.48	50.37
Australia	1,989.95	416.67	30.58
Ukraine	629.08	126.41	9.28
Canada	141.62	36.54	2.68
Turkey	74.23	19.11	1.40
Others	305.71	77.55	5.69
SOYABEAN OIL/CAKE MEAL			
	2,519.70	983.69	100.00
United States of America	1,805.43	713.78	72.56
Argentina	701.28	263.94	26.83
India	11.17	4.62	0.47
Taiwan	0.31	0.54	0.06
Canada	1.06	0.45	0.05
Others	0.46	0.35	0.04
MILK & CREAM & PRODUCTS			
	412.64	662.10	100.00
United States of America	103.03	187.50	28.32
New Zealand	86.15	167.23	25.26
Netherlands	25.62	44.71	6.75
Germany	27.96	44.66	6.75
Australia	25.78	28.27	4.27
Others	144.09	189.72	28.65
COFFEE			
	197.70	513.87	100.00
Indonesia	135.74	337.95	65.77
Vietnam	51.10	120.78	23.50
Malaysia	3.31	24.21	4.71
China, People's Republic of	2.16	12.79	2.49
Thailand	2.98	11.41	2.22
Others	2.42	6.74	1.31

Table 7.6 TOP AGRICULTURAL IMPORTS: VOLUME ..(Continued)

COMMODITY/ COUNTRY OF ORIGIN	VOLUME	VALUE	% SHARE (VALUE)
MEAT OF BOVINE, FROZEN	120.08	394.01	100.00
Australia	31.22	119.82	30.41
India	41.04	118.37	30.04
Ireland	14.41	41.74	10.59
United States of America	9.05	40.05	10.16
Brazil	11.48	34.09	8.65
Others	12.87	39.94	10.14
FERTILIZER MANUFACTURED	1,482.71	376.36	100.00
China, People's Republic of	817.04	185.40	49.26
Canada	120.23	31.41	8.35
Indonesia	104.37	29.79	7.92
Korea, Republic of South	60.45	18.44	4.90
Norway	40.40	18.37	4.88
Others	340.21	92.95	24.70
RICE	888.09	357.72	100.00
Vietnam	499.37	186.55	52.15
Thailand	281.57	104.51	29.22
Pakistan	81.68	26.92	7.53
India	10.81	22.35	6.25
China, People's Republic of	4.35	13.32	3.72
Others	10.29	4.07	1.14
UREA	1,019.86	261.65	100.00
Indonesia	303.23	77.07	29.45
Qatar	288.67	76.92	29.40
Malaysia	244.22	62.26	23.80
China, People's Republic of	115.17	28.25	10.80
Saudi Arabia	33.28	8.14	3.11
Others	35.29	9.02	3.45

Table 7.6 TOP AGRICULTURAL IMPORTS: VOLUME ..(Concluded)

COMMODITY/ COUNTRY OF ORIGIN	VOLUME	VALUE	% SHARE (VALUE)
CHICKEN MEAT, FROZEN	253.71	235.80	100.00
United States of America	102.25	97.41	41.31
Netherlands	49.94	44.88	19.03
Brazil	36.32	33.22	14.09
Canada	27.52	25.79	10.94
Belgium	25.42	23.19	9.84
Others	12.26	11.31	4.80
TUNA	146.75	226.75	100.00
Papua New Guinea	60.40	103.79	45.77
Taiwan	15.17	27.33	12.05
China, People's Republic of	22.97	21.08	9.30
Korea, Republic of South	11.63	19.86	8.76
Indonesia	9.68	17.09	7.54
Others	26.90	37.59	16.58

Source: PSA

**Table 7.7 AGRICULTURAL TRADE BALANCES OF THE PHILIPPINES
WITH ITS MAJOR TRADING PARTNERS, 2013-2017**

ITEM	2013	2014	2015	2016	2017
(Export in FOB M US\$; Import in CIF M US\$)					
PHILIPPINES					
<i>Agricultural Exports</i>	6,400.03	6,542.95	5,131.85	5,280.24	6,579.51
<i>Agricultural Imports</i>	7,931.14	9,631.24	10,965.76	12,518.84	11,762.47
<i>Trade Balance</i>	(1,531.11)	(3,088.29)	(5,833.90)	(7,238.60)	(5,182.97)
AUSTRALIA					
<i>Agricultural Exports</i>	49.02	72.00	72.40	68.51	65.18
<i>Agricultural Imports</i>	340.91	502.30	521.91	554.88	749.79
<i>Trade Balance</i>	(291.89)	(430.30)	(449.52)	(486.37)	(684.60)
JAPAN					
<i>Agricultural Exports</i>	915.99	944.19	655.33	647.57	804.30
<i>Agricultural Imports</i>	100.87	108.72	125.60	230.50	48.20
<i>Trade Balance</i>	815.12	835.46	529.73	417.07	756.10
USA					
<i>Agricultural Exports</i>	1,466.99	1,505.42	1,329.51	1,333.97	1,472.34
<i>Agricultural Imports</i>	1,754.83	1,992.34	2,337.95	2,542.08	2,636.13
<i>Trade Balance</i>	(287.85)	(486.92)	(1,008.44)	(1,208.11)	(1,163.79)
ASEAN					
<i>Agricultural Exports</i>	964.60	788.19	517.50	525.25	538.94
<i>Agricultural Imports</i>	1,956.80	2,754.74	3,344.78	3,837.21	3,778.61
<i>Trade Balance</i>	(992.20)	(1,966.54)	(2,827.28)	(3,311.96)	(3,239.66)
EUROPEAN UNION					
<i>Agricultural Exports</i>	1,038.05	999.36	994.98	1,021.22	1,566.51
<i>Agricultural Imports</i>	738.34	1,066.83	1,110.02	1,318.05	1,300.75
<i>Trade Balance</i>	299.71	(67.47)	(115.04)	(296.83)	265.76
Rest of the World					
<i>Agricultural Exports</i>	1,965.39	2,233.78	1,562.15	1,683.72	2,132.23
<i>Agricultural Imports</i>	3,039.38	3,206.31	3,525.50	4,036.11	3,248.99
<i>Trade Balance</i>	(1,073.99)	(972.54)	(1,963.35)	(2,352.39)	(1,116.77)

Source: PSA



**SUPPLY
UTILIZATION
ACCOUNTS**

SUPPLY UTILIZATION ACCOUNTS

**Table 8.1 RICE: SUPPLY UTILIZATION ACCOUNTS,
PHILIPPINES, 2013-2017**

ITEM	2013	2014	2015	2016	2017P
	('000 mt)				
Gross Supply	14,981	15,618	16,010	15,332	16,256
Beginning Stock	2,524	2,126	2,662	3,199	2,765
Production	12,059	12,405	11,870	11,528	12,607
Imports	398	1,087	1,478	605	885
Utilization					
Exports	2	1	a/	a/	a/
Seeds	233	232	228	223	236
Feeds & Waste	784	806	772	749	819
Processing	482	496	475	461	504
Net Food Disposable	11,354	11,420	11,336	11,133	12,407
Per Capita NFD					
<i>kilograms/year</i>	115.63	114.34	111.62	107.83	118.25
<i>grams/day</i>	316.79	313.25	305.81	295.43	323.97
Ending Stock	2,126	2,662	3,199	2,765	2,290

a/ Less than 1 thousand metric ton

Source: PSA

**Table 8.2 CORN: SUPPLY UTILIZATION ACCOUNTS,
PHILIPPINES, 2013-2017**

ITEM	2013	2014	2015	2016	2017P
	('000 mt)				
Gross Supply	7,880	8,515	8,415	8,412	8,772
Beginning Stock	161	169	184	387	382
Production	7,377	7,771	7,519	7,219	7,915
Imports	342	575	712	806	475
Utilization					
Exports	a/	1	a/	a/	a/
Seeds	51	52	51	50	51
Feeds & Waste	4,795	5,051	4,887	4,692	5,145
Processing	984	1,037	1,003	963	1,056
Net Food Disposable	1,881	2,190	2,086	2,325	1,569
Per Capita NFD					
<i>kilograms/year</i>	19.15	21.93	20.54	22.52	14.95
<i>grams/day</i>	52.47	60.07	56.28	61.69	40.97
Ending Stock	169	184	387	382	952

a/ Less than 1 thousand metric ton

Source: PSA

Table 8.3 PAPAYA: SUPPLY UTILIZATION ACCOUNTS, PHILIPPINES, 2013-2017

ITEM	2013	2014	2015	2016	2017P
	(mt)				
Gross Supply	166,336	172,628	172,650	162,481	167,043
Production	166,336	172,628	172,650	162,481	167,043
Imports	-	-	-	-	-
Utilization					
Exports	5,925	5,108	1,834	1,588	2,255
Feeds & Waste	9,625	10,051	10,249	9,654	9,887
Net Food Disposable	150,786	157,469	160,567	151,239	154,901
Per Capita NFD					
<i>kilograms/year</i>	1.54	1.58	1.58	1.46	1.48
<i>grams/day</i>	4.22	4.33	4.33	4.00	4.05

Source: PSA

Table 8.4 CABBAGE: SUPPLY UTILIZATION ACCOUNTS, PHILIPPINES, 2013-2017

ITEM	2013	2014	2015	2016	2017P
	(mt)				
Gross Supply	127,463	127,986	125,752	123,081	122,474
Production	127,463	127,986	125,752	123,080	122,474
Imports	-	-	-	1	-
Utilization					
Exports	-	-	-	-	b/
Seeds	31	31	30	30	29
Feeds & Waste	10,197	10,239	10,060	9,846	9,798
Net Food Disposable	117,235	117,716	115,662	113,205	112,647
Per Capita NFD					
<i>kilograms/year</i>	1.19	1.18	1.14	1.10	1.07
<i>grams/day</i>	3.26	3.23	3.12	3.00	2.94

b/ Less than 1 metric ton

Source: PSA

SUPPLY UTILIZATION ACCOUNTS

**Table 8.5 CASSAVA: SUPPLY UTILIZATION ACCOUNTS,
PHILIPPINES, 2013-2017**

ITEM	2013	2014	2015	2016	2017P
	(mt)				
Gross Supply	2,377,438	2,550,693	2,714,346	2,755,155	2,806,668
Production	2,361,561	2,540,254	2,714,346	2,755,146	2,806,668
Imports	15,877	10,439	-	9	-
Utilization					
Exports	1,031	1,744	656	641	1,345
Feeds & Waste	141,694	152,415	162,861	165,309	168,400
Processing	1,996,182	2,141,117	2,279,499	2,313,792	2,356,471
Net Food					
Disposable	238,531	255,417	271,330	275,414	280,452
Per Capita NFD					
<i>kilograms/year</i>	2.43	2.56	2.67	2.67	2.67
<i>grams/day</i>	6.66	7.01	7.32	7.31	7.32

Source: PSA

**Table 8.6 MONGO: SUPPLY UTILIZATION ACCOUNTS,
PHILIPPINES, 2013-2017**

ITEM	2013	2014	2015	2016	2017P
	(mt)				
Gross Supply	66,087	60,867	64,371	65,271	71,733
Production	32,422	32,144	33,623	34,039	35,341
Imports	33,665	28,723	30,748	31,232	36,392
Utilization					
Exports	28	50	b/	3	22
Seeds	196	193	187	186	189
Feeds & Waste	330	304	322	326	359
Net Food Disposable	65,533	60,320	63,862	64,756	71,163
Per Capita NFD					
<i>kilograms/year</i>	0.67	0.60	0.63	0.63	0.68
<i>grams/day</i>	1.84	1.64	1.73	1.72	1.86

b/Less than 1 metric ton

Source: PSA

Table 8.7 CHICKEN (Dressed): SUPPLY UTILIZATION ACCOUNTS, PHILIPPINES, 2013-2017

ITEM	2013	2014	2015	2016	2017P
	(mt)				
Gross Supply	1,296,131	1,376,862	1,469,355	1,525,139	1,386,790
Production	1,197,404	1,210,257	1,278,826	1,289,369	1,344,334
Imports	98,727	166,605	190,529	235,770	42,456
Utilization					
Exports	6,084	8,405	3,700	2,398	355
Net Food					
Disposable	1,290,047	1,368,457	1,465,655	1,522,741	1,386,435
Per Capita NFD					
<i>kilograms/year</i>	13.14	13.70	14.43	14.75	13.21
<i>grams/day</i>	36.00	37.53	39.53	40.41	36.20

Source: PSA

Table 8.8 BEEF: SUPPLY UTILIZATION ACCOUNTS, PHILIPPINES, 2013-2017

ITEM	2013	2014	2015	2016	2017P
	(mt)				
Gross Supply	201,932	218,852	220,875	235,602	242,722
Production	151,480	153,160	156,429	158,490	156,079
Imports	50,452	65,692	64,446	77,112	86,643
Utilization					
Exports	49	45	10	-	-
Processing	15,148	15,316	15,643	15,849	15,608
Carcass					
Net Food					
Disposable	164,083	179,038	181,168	195,785	198,943
Per Capita NFD					
<i>kilograms/year</i>	1.67	1.79	1.78	1.90	1.90
<i>grams/day</i>	4.58	4.90	4.88	5.20	5.19
Offals					
Net Food					
Disposable	22,652	24,453	24,054	23,968	28,172
Per Capita NFD					
<i>kilograms/year</i>	0.23	0.24	0.24	0.23	0.27
<i>grams/day</i>	0.63	0.66	0.66	0.64	0.74

Source: PSA

SUPPLY UTILIZATION ACCOUNTS

Table 8.9 MILKFISH: SUPPLY UTILIZATION ACCOUNTS, PHILIPPINES, 2013-2017

ITEM	2013	2014	2015	2016	2017P
	(mt)				
Gross Supply	406,241	402,091	392,843	402,661	416,813
Production	405,783	401,979	392,738	402,655	416,363
Imports	458	112	105	6	450
Utilization					
Exports	4,121	3,419	3,219	3,306	2,941
Feeds & Waste	12,173	12,059	11,782	12,080	12,491
Processing	129,851	128,633	125,676	128,850	133,236
Net Food Disposable	260,096	257,980	252,166	258,426	268,145
Per Capita NFD					
<i>kilograms/year</i>	2.65	2.58	2.48	2.50	2.56
<i>grams/day</i>	7.26	7.07	6.79	6.86	7.00

Source: PSA

Table 8.10 TILAPIA: SUPPLY UTILIZATION ACCOUNTS, PHILIPPINES, 2013-2017

ITEM	2013	2014	2015	2016	2017P
	(mt)				
Gross Supply	317,781	313,378	311,727	300,759	311,210
Production	317,757	313,378	311,684	300,722	310,975
Imports	24	-	43	37	235
Utilization					
Exports	5,319	1,957	167	60	5
Feeds & Waste	9,533	9,401	9,351	9,022	9,329
Net Food Disposable	302,929	302,020	302,209	291,678	301,875
Per Capita NFD					
<i>kilograms/year</i>	3.08	3.02	2.98	2.83	2.88
<i>grams/day</i>	8.44	8.27	8.16	7.74	7.88

Source: PSA

SELECTED STATISTICS ON AGRICULTURE 2018
Technical Staff

LISA GRACE S. BERSALES, Ph.D.
Undersecretary
National Statistician and Civil Registrar General

ROSALINDA P. BAUTISTA
(Director II)
Officer-in-Charge
Sectoral Statistics Office

VIVIAN R. ILARINA
Assistant National Statistician
Macroeconomic Accounts Service

DIVINA GRACIA L. DEL PRADO
(Director III)
Officer-in-Charge
Economic Sector Statistics Service

Focal Persons

Maria Carol G. Duran
Ermina V. Tepora
Elizabeth B. Cabrera
Reinelda P. Adriano
Elena G. Varona
Ma. Julieta P. Soliven



Republic of the Philippines
PHILIPPINE STATISTICS AUTHORITY
16th Floor. ETON Cyberpod Centris 3
EDSA. Corner Quezon Avenue,
Quezon City

www.psa.gov.ph



[/PhilippineStatisticsAuthority](https://www.facebook.com/PhilippineStatisticsAuthority)



[/PSAgovph](https://twitter.com/PSAgovph)