

45 Years

BAS at

45

**: PROMOTING FOOD SECURITY
THROUGH QUALITY STATISTICS**

**SELECTED
STATISTICS ON
AGRICULTURE
*2008***

TERMS OF USE

Selected Statistics on Agriculture 2008 is a publication of the Bureau of Agricultural Statistics (BAS), Department of Agriculture. The BAS reserves exclusive right to reproduce this publication in whatever form. Should any portion of this publication be included in a report/article, the title of the publication and the BAS should be cited as the source of the data. The BAS will not be responsible for any information derived from the processing of data contained in this publication.

ISSN-2012-0362

Please direct technical inquiries to:

The Office of the Director
Bureau of Agricultural Statistics
Ben-Lor Building, 1184 Quezon Avenue,
Quezon City 1100, Philippines.

Email: info@bas.gov.ph

Website: www.bas.gov.ph

FOREWORD

The Selected Statistics on Agriculture (SSA) 2008 is an annual publication of the Bureau of Agricultural Statistics (BAS). This is the 19th issue of the SSA and its release coincides with the 45th Anniversary of the Bureau. Like in the previous issues, the SSA presents a three-year series of selected statistics and indicators on agriculture and fisheries. The reference period for this edition is 2005 to 2007. There are few exceptions as follows: 1) *Table 7 which contains census data for the years 1991 and 2002*, 2) *Tables 12 and 12a, 19 and 20, and 23 which present 2007 data on production*, 3) *Tables 26 to 28 which present the 2007 data on costs and returns of production*, 4) *Tables 37 and 42 which contain the 2007 data on agricultural exports and imports*, and 5) *Table 39 that reflects the share of Philippine exports in the world market for the years 2004 and 2005*.

The presentation formats in the previous editions are maintained so that users can easily analyze and compare data through the years. However, some of the table numbers have to be adjusted with the inclusion of the table on agricultural imports by major country of origin.

Through this handbook, the BAS hopes to address the need of its clients and stakeholders for a handy reference material on agriculture and fisheries. We enjoin our valued readers and users to give us their comments and suggestions for the enhancement of the contents and presentation of this handbook.



ROMEO S. RECIDE
Director

ACKNOWLEDGMENT

Our appreciation and gratitude go to the following agencies for their cooperation and support in sharing with us their data: *Agricultural Credit Policy Council (ACPC), Asian Development Bank (ADB), Bureau of Animal Industry (BAI), Bureau of Fisheries & Aquatic Resources (BFAR), Bangko Sentral Ng Pilipinas (BSP), Cotton Development Administration (CODA), Department of Budget and Management (DBM), Development Bank of the Philippines (DBP), Food and Agriculture Organization (FAO), Fertilizer and Pesticide Authority (FPA), Fiber Industry Development Authority (FIDA), National Food Authority (NFA), National Irrigation Administration (NIA), National Statistical Coordination Board (NSCB), National Statistics Office (NSO), Philippine Coconut Authority (PCA), Philippine National Bank (PNB), Sugar Regulatory Administration (SRA) and World Bank (WB)*

TABLE OF CONTENTS

	Page/s
Foreword	i
Acknowledgment	ii
Table of Contents	iii
Explanatory Notes	iv
An Overview of the Philippine Agricultural Economy	2
Selected Macroeconomic and Agriculture Sector Statistics	5
Crops Sub-Sector Statistics	13
Livestock & Poultry Sub-Sector Statistics	23
Fisheries Sector Statistics	29
Production Costs and Returns	35
Price Statistics	41
Agricultural Foreign Trade Statistics	49
Supply and Utilization Accounts	61

EXPLANATORY NOTES

1. Unless otherwise indicated, year refers to calendar year.
2. Sources of basic data other than the BAS are acknowledged at the bottom of each table.
3. As a rule, figures from source publications were copied to the extent possible. In some instances, however, figures were rounded-off or combined.
4. Figures may not add up to the totals due to rounding off.
5. Yield per hectare derived prior to rounding-off the data on production and hectarage.
6. Notes on the following:
 - a. *Population - 2005 and 2006 data are mid-year projections based on 2000 Census of Population, 2007 is Census year*
 - b. *Labor force – based on 2000 Census of Population*
 - c. *Wage rate indices – use 2000 as base year; the 2007 indices covered only the first semester wage rates for (a) palay and (b) corn*
 - d. *Inflation rate – refers to headline inflation with 2000 as base year*

7. The following symbols and abbreviations were used in the tables:

<i>- - -</i>	<i>Data not yet available</i>
<i>-</i>	<i>None</i>
<i>a/</i>	<i>Less than 0.01 percent</i>
<i>b/</i>	<i>Less than 1000 metric ton</i>
<i>c/</i>	<i>less than 1 metric ton</i>
<i>R</i>	<i>Revised</i>
<i>P</i>	<i>Preliminary</i>
<i>mt</i>	<i>Metric Ton</i>
<i>ha(s)</i>	<i>Hectare/s</i>
<i>kg</i>	<i>Kilogram</i>
<i>GNP</i>	<i>Gross National Product</i>
<i>GVA</i>	<i>Gross Value Added</i>
<i>GDP</i>	<i>Gross Domestic Product</i>
<i>PDB</i>	<i>Private Development Bank</i>
<i>SMB</i>	<i>Savings and Mortgage Bank</i>
<i>SSLA</i>	<i>Stock Savings & Loan Assn.</i>
<i>FOB</i>	<i>Free on Board</i>
<i>CIF</i>	<i>Cost Insurance Freight</i>
<i>NFD</i>	<i>Net Food Disposable</i>

AN OVERVIEW OF THE PHILIPPINE AGRICULTURAL ECONOMY

Economic Performance. In 2007, the Philippines recorded a 7.96 percent growth in Gross National Product (GNP). Its Gross Domestic Product (GDP) expanded by 7.19 percent. The Gross Value Added (GVA) in agriculture and fishery increased by 5.01 percent during the year. The sector accounted for about 18.26 percent of the GDP.

Employment and Wages. Of the 36.21 million persons in the labor force in 2007, about 33.56 million or 92.7 percent were employed. Agriculture employed 11.78 million persons or about 35 percent of the total employment. In the first half of 2007, the nominal wage rates for palay and corn farm workers were above the 2000 wages by 35 and 25 index points, respectively.

Farm Support Services. The government budget for agricultural expenditures in 2007 amounted to P35.55 billion, this was 8.16 percent lower than the previous year's level. In the same year, agricultural loans which added up to P560.04 billion increased by 9.94 percent. About 24 percent of the loans were utilized for production purposes. Meanwhile, irrigation development remained at less than 46 percent of the total potential irrigable areas.

Production Performance. In 2007, palay and corn production increased by 5.96 percent and 10.77 percent, respectively. On the other hand, reductions in production were noted for coconut at 0.70 percent and sugarcane at 8.67 percent. Other contributors to growth were banana, pineapple, mango and onion.

Production of carabao went up by 5.02 percent, hog by 2.72 percent and goat by 2.31 percent. Dairy had 5.00 percent output gain. Cattle production declined by 0.59 percent. Chicken had 0.47

percent production increment. A 7.68 percent output reduction was noted for duck. Production of chicken eggs expanded by 1.46 percent while that of duck eggs decreased by 6.08 percent.

Commercial fisheries had 10.31 percent production increment. Output increased by 5.57 percent in municipal fisheries and by 5.86 percent in aquaculture.

Prices. Generally, prices received by farmers for their produce have been increasing continuously as reflected in the Producer Price Index (PPI). In 2007, prices of cereals were 102.6 index points above the 1994 prices. Those of rootcrops gained 138.6 index points and those of commercial crops were 108.7 index points higher. In the case of livestock and poultry, prices were 69.8 index points and 66.3 index points higher than the 1994 prices, respectively.

International Trade. Export earnings from agriculture during the three-year period, 2005-2007, grew by an average of 12.28 percent. In 2007, the value of agricultural exports amounted to US\$3.35 billion or 27.12 percent higher than in 2006. Coconut oil remained as the country's top agricultural export. This comprised about 21 percent of the total agricultural exports. Major markets for coconut oil were United States of America and Netherlands.

The value of agricultural imports grew by an average of 10.07 percent over the three reference years. In 2007 this was placed at US\$4.92 billion, up by 12.84 percent from the year-ago level. Rice and milk and cream and products accounted for 26 percent of the country's agricultural imports. The major suppliers of rice were Vietnam and Thailand while most of the milk and cream and products came from New Zealand.

**SELECTED
MACROECONOMIC AND
AGRICULTURE SECTOR
STATISTICS**

Table 1. Macroeconomic Growth Indicators, Philippines, 2005-2007

ITEM	2005R	2006R	2007P
GNP (million pesos, at constant 1985 prices)	1,320,000	1,392,005	1,502,814
Growth Rate (%)	5.40	5.45	7.96
GDP (million pesos, at constant 1985 prices)	1,211,452	1,276,873	1,368,641
Growth Rate (%)	-4.72	5.40	7.19
GVA IN AGRICULTURE EXCLUDING FORESTRY (million pesos, constant 1985 prices)			
Growth Rate (%)			
Agriculture Sector	0.89	3.04	5.01
Crops	0.67	3.91	5.83
Livestock	2.37	2.36	2.42
Poultry	0.09	-0.37	0.21
Fisheries	5.94	5.88	6.86
Agricultural Activities & Services	1.45	3.48	4.49

Source: NSCB

Figure 1. Macroeconomic Growth Indicators, Philippines, 1998-2007

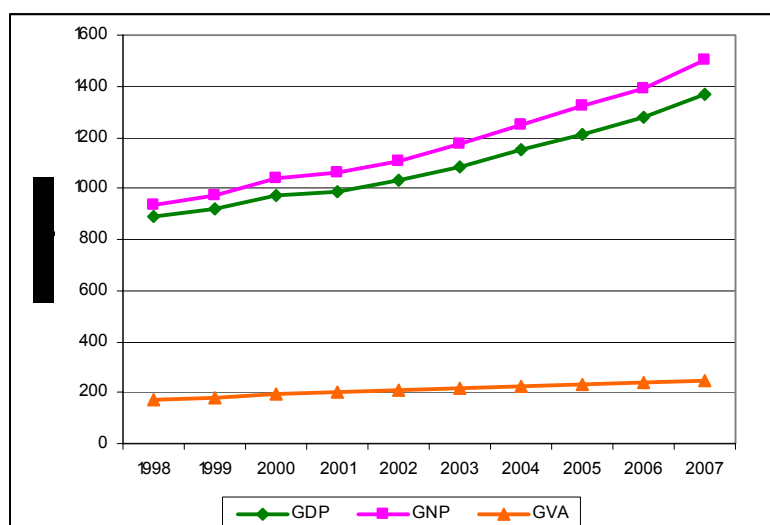


Table 2. Population, Labor Force and Employment and Wage Rate Indices, Philippines, 2005-2007

ITEM	2005	2006	2007
POPULATION (million persons)	85.26	86.97	88.57
Male	42.89	43.74	---
Female	42.37	43.23	---
LABOR FORCE (million persons)	34.94	35.47	36.21
Employment	32.19	32.64	33.56
Agriculture	11.57	11.68	11.78
Unemployment	2.75	2.83	2.65
WAGE RATE INDICES IN AGRICULTURE			
(Without Meal)			
Nominal	122.40	127.60	135.20 a 124.70 b
Real	94.30	92.50	96.40 a 89.00 b

Sources: NSO and BAS

Table 3. Peso Exchange Rate, Inflation Rate and Purchasing Power, Philippines, 2005-2007

ITEM	2005	2006	2007
OFFICIAL EXCHANGE RATE	55.09	51.31	46.15
INFLATION RATE	7.7	6.2	2.8
PURCHASING POWER OF PESO	0.77	0.73	0.71

Source: BSP

Table 4. Expenditures in National Government and Agriculture, Philippines, 2005-2007

ITEM	2005	2006R	2007P
NATIONAL GOVERNMENT			
(million pesos)	947,554	1,044,827	1,126,139
AGRICULTURE (million pesos)	25,939	38,711	35,553
AGRICULTURE TO NATIONAL GOVERNMENT RATIO (%)	2.74	3.71	3.16

Source: DBM

Table 5. Fertilizer (All Grades): Production and Import, Philippines, 2005-2007

ITEM	2005	2006R	2007
TOTAL SUPPLY ('000 mt)	2,492.2	1,660.8	---
Production	877.1	325.3	---
Production to Total Supply Ratio (%)	35.2	19.6	---
Import	1,615.1	1,335.5	---
Import to Total Supply Ratio (%)	64.8	80.4	---

Source: FPA

Table 6. Irrigation: Service Area and Potential Irrigable Area, Philippines, 2005-2007

ITEM	2005	2006	2007
SERVICE AREA (million has)	1.41	1.43	1.43
SERVICE AREA TO TOTAL POTENTIAL IRRIGABLE AREA RATIO (%)	45.20	45.67	45.89

Source: NIA

Table 7. Number and Area of Farms by Tenurial Status and Number of Parcels, Philippines, 1991 and 2002

ITEM	1991	2002
FARM TENURE		
Number of Farms ('000 farms)		
TOTAL	4,610	4,823
Owned	2,000	2,293
Partly owned	1,523	1,500
Tenanted	681	622
Leased	116	111
Other forms	290	284
Not reported	-	13
Area of Farms ('000 has)		
TOTAL	9,975	9,671
Owned	4,855	4,897
Partly owned	3,226	3,105
Tenanted	1,284	1,115
Leased	253	203
Other forms	357	329
Not reported	-	22
FARM PARCELS		
Number of Farms ('000 farms)		
TOTAL	4,610	4,823
1 parcel	1,811	1,859
2 - 3 parcels	2,462	2,679
4 - 5 parcels	278	233
6 parcels and above	59	52
Area of Farms ('000 has)		
TOTAL	9,975	9,671
1 parcel	3,201	2,825
2 - 3 parcels	5,239	5,442
4 - 5 parcels	1,097	939
6 parcels and above	438	465

Source: NSO

Table 8. Agricultural Production Loans: Amount Granted by Commodity and Source, Philippines, 2005-2007

ITEM	2005R	2006R	2007P
LOANS GRANTED BY COMMODITY (million pesos)			
FOOD COMMODITIES	56,520.9	61,048.2	66,493.1
Cereals	14,373.1	15,072.0	15,953.0
Palay	12,849.1	13,933.7	14,741.0
Corn	1,236.8	927.2	970.5
Sorghum	73.7	30.8	33.4
Soybeans & Feedgrains	213.5	180.3	208.1
Fruits, Vegetables & Rootcrops	8,167.4	11,019.3	12,717.2
Livestock and Poultry	17,464.8	18,117.6	20,180.8
Fisheries	16,515.5	16,839.4	17,642.1
EXPORT & COMMERCIAL COMMODITIES	11,632.4	12,477.1	13,444.1
Abaca & Other Fibers	217.5	196.6	210.1
Coconut	4,597.0	5,179.9	5,555.8
Coffee & Cacao	1,321.2	1,487.9	1,706.7
Cotton	3.5	0.3	1.4
Rubber	29.5	35.0	41.4
Sugarcane	4,604.8	4,635.2	4,849.4
Tobacco	858.8	942.3	1,079.2
FORESTRY	718.4	1,365.5	1,448.6
OTHERS	24,923.2	25,899.7	29,918.7
SUB-TOTAL	93,794.9	100,790.5	111,304.6
OTHER SOURCES OF LOANS			
SSLA	1,964.0	1,999.0	2,035.0
SMB	12,285.0	15,181.0	18,760.0
PDB	892.0	780.0	681.0
GRAND TOTAL	108,935.9	118,750.5	132,780.6

Source: ACPC

**Table 8a. Total and Agricultural Loans, Philippines,
2005-2007**

ITEM	2005R	2006R	2007P
AGRICULTURAL PRODUCTION			
LOAN TO OUTPUT (GVA) RATIO (%)	14.0	13.9	14.2
AGRICULTURAL LOANS (million pesos, at current prices)	466,117.9	509,393.0	560,042.2
TOTAL LOANS (million pesos, at current prices)	11,935,642.3	12,372,415.8	12,878,463.3
AGRICULTURAL LOANS TO TOTAL LOANS GRANTED RATIO (%)	3.9	4.1	4.3

Source: ACPC

**CROPS
SUB-SECTOR
STATISTICS**

**Table 9. Agricultural Crops: Volume of Production,
Philippines, 2005-2007**

ITEM	2005	2006	2007
		('000 mt)	
TOTAL CROPS	73,725.9	77,401.1	78,214.1
Palay	14,603.0	15,326.7	16,240.2
Corn	5,253.2	6,082.1	6,736.9
Coconut	14,824.6	14,957.9	14,852.9
Sugarcane	22,917.7	24,345.1	22,235.3
Banana	6,298.2	6,794.6	7,484.1
Pineapple	1,788.2	1,833.9	2,016.5
Coffee	105.8	104.1	97.9
Mango	984.3	919.0	1,023.9
Tobacco	45.1	38.4	34.3
Abaca	74.0	69.8	66.4
Peanut	28.4	29.2	31.2
Mongo	26.8	26.0	29.1
Cassava	1,677.6	1,756.9	1,871.1
Camote	574.6	566.8	573.7
Tomato	173.7	175.6	188.8
Garlic	13.2	12.6	11.3
Onion	82.0	76.0	146.1
Cabbage	91.4	91.2	123.4
Eggplant	187.8	191.9	210.2
Calamansi	200.8	196.6	201.6
Rubber	315.6	351.6	404.1
Others	3,459.7	3,455.3	3,635.1

**Table 10. Agricultural Crops: Area Planted/Harvested^{1/},
Philippines, 2005-2007**

ITEM	2005	2006	2007
	('000 has)		
TOTAL CROPS	12,034.2	12,389.9	12,640.4
Palay	4,070.4	4,159.9	4,272.9
Corn	2,441.8	2,570.7	2,648.3
Coconut	3,243.3	3,337.4	3,359.8
Sugarcane	368.9	392.3	383.0
Banana	417.8	428.8	436.8
Pineapple	49.2	49.8	54.0
Coffee	128.0	126.1	124.0
Mango	164.1	171.7	184.2
Tobacco	29.6	26.3	23.9
Abaca	136.0	135.9	136.1
Peanut	27.5	27.6	28.3
Mongo	36.1	35.7	39.0
Cassava	204.8	204.6	209.6
Camote	120.6	118.8	117.6
Tomato	17.7	17.1	17.5
Garlic	4.7	4.4	3.9
Onion	8.9	8.4	15.9
Cabbage	7.4	7.3	8.5
Eggplant	21.2	20.9	21.6
Calamansi	20.2	20.3	20.5
Rubber	81.9	94.3	111.0
Others	434.1	431.4	424.3

1/ Area planted for permanent crops and area harvested for temporary crops.

Table 11. Agricultural Crops: Value of Production, Philippines, 2005-2007

ITEM	2005	2006	2007
(million pesos, at current prices)			
TOTAL CROPS	408,696.8	456,748.6	510,448.6
Palay	154,061.8	159,244.5	182,052.6
Corn	40,291.7	54,434.9	65,887.4
Coconut	52,775.5	50,258.6	59,708.8
Sugarcane	22,688.5	33,109.3	28,905.9
Banana	43,772.7	47,969.6	58,301.0
Pineapple	9,334.5	7,867.5	9,860.5
Coffee	4,666.5	4,953.6	5,496.0
Mango	16,802.7	18,711.5	17,385.8
Tobacco	2,254.0	1,840.5	1,944.6
Abaca	2,422.3	2,430.1	2,266.9
Peanut	663.0	682.1	766.3
Mongo	680.8	790.4	928.2
Cassava	6,374.7	9,135.7	8,850.4
Camote	4,102.9	4,488.9	4,779.3
Tomato	1,808.7	2,145.7	2,140.4
Garlic	674.3	1,032.6	776.9
Onion	1,961.1	2,105.4	2,223.6
Cabbage	924.5	1,081.2	1,439.4
Eggplant	2,118.4	2,798.0	2,353.8
Calamansi	2,042.2	2,087.8	1,758.1
Rubber	8,591.7	12,297.6	15,435.5
Others	29,684.4	37,283.0	37,187.2

Table 12. Major Agricultural Crops: Percentage Distribution of Production by Region, Philippines, 2007

REGION	PALAY	CORN	COCONUT	SUGAR-CANE
PHILIPPINES (^{'000} mt)	16,240.2	6,736.9	14,852.9	22,235.3
LUZON	57.30	35.15	20.67	16.34
CAR	2.69	2.61	0.01	0.04
Ilocos	10.11	4.98	0.23	0.09
Cagayan Valley	12.47	19.02	0.53	1.17
Central Luzon	18.12	2.95	1.23	4.05
CALABARZON	2.41	0.98	8.40	9.88
MIMAROPA	5.40	1.70	3.82	-
Bicol	6.10	2.91	6.46	1.11
VISAYAS	19.66	8.94	17.89	66.52
Western Visayas	12.27	4.67	3.25	51.70
Central Visayas	1.55	2.96	2.67	13.02
Eastern Visayas	5.84	1.31	11.97	1.80
MINDANAO	23.04	55.91	61.43	17.14
Zamboanga Peninsula	3.41	3.26	11.89	a/
Northern Mindanao	3.09	15.56	11.24	11.51
Davao Region	2.63	5.26	17.38	2.77
SOCCSKSARGEN	7.31	16.68	5.75	2.59
Caraga	2.81	1.87	8.37	0.26
ARMM	3.79	13.29	6.80	a/

Table 12a. Major Agricultural Crops: Percentage Distribution of Production by Region, Philippines, 2007

REGION	PINE-APPLE	BANANA	MANGO	COFFEE
PHILIPPINES (‘000 mt)	2,016.5	7,484.1	1,023.9	97.9
LUZON	11.50	11.46	66.22	12.37
CAR	0.03	0.36	0.37	
Ilocos	0.01	0.62	43.37	0.09
Cagayan Valley	1.42	5.17	8.80	1.09
Central Luzon	0.06	0.69	8.22	1.63
CALABARZON	4.17	1.36	4.44	9.01
MIMAROPA	0.01	2.52	0.77	0.21
Bicol	5.79	0.74	0.16	0.35
VISAYAS	1.30	9.82	12.86	6.48
Western Visayas	0.73	4.43	5.67	5.96
Central Visayas	0.22	2.10	7.12	0.32
Eastern Visayas	0.34	3.29	0.07	0.20
MINDANAO	87.20	78.72	20.92	74.76
Zamboanga Peninsula	0.12	3.30	5.82	1.37
Northern Mindanao	45.85	12.47	3.29	6.42
Davao Region	1.11	42.49	3.72	25.00
SOCCSKSARGEN	39.86	12.50	5.00	27.71
Caraga	0.22	2.98	1.64	11.08
ARMM	0.05	4.98	1.45	3.18

Table 13. Palay: Production, Area Harvested and Yield per Hectare, by Ecosystem, by Semester, Philippines, 2005-2007

ITEM	2005	2006	2007
PRODUCTION (million mt)			
TOTAL	14.60	15.33	16.24
Irrigated	11.23	11.60	12.27
Rainfed	3.37	3.73	3.97
JANUARY-JUNE	6.03	6.54	6.73
Irrigated	5.09	5.37	5.58
Rainfed	0.94	1.17	1.15
JULY-DECEMBER	8.57	8.79	9.51
Irrigated	6.14	6.22	6.69
Rainfed	2.43	2.57	2.82
AREA HARVEASTED (million has)			
TOTAL	4.07	4.16	4.27
Irrigated	2.79	2.83	2.92
Rainfed	1.28	1.33	1.36
JANUARY-JUNE	1.68	1.77	1.80
Irrigated	1.27	1.30	1.34
Rainfed	0.41	0.47	0.47
JULY-DECEMBER	2.39	2.39	2.47
Irrigated	1.52	1.53	1.58
Rainfed	0.87	0.86	0.89
YIELD PER HECTARE (mt)			
TOTAL	3.59	3.68	3.80
Irrigated	4.02	4.10	4.21
Rainfed	2.63	2.80	2.93
JANUARY-JUNE	3.60	3.70	3.73
Irrigated	4.01	4.13	4.18
Rainfed	2.30	2.49	2.46

Table 13. Palay: Production, Area Harvested and Yield per Hectare, by Ecosystem, by Semester, Philippines, 2005-2007 *(concluded)*

ITEM	2005	2006	2007
JULY-DECEMBER	3.58	3.68	3.85
Irrigated	4.03	4.07	4.23
Rainfed	2.79	2.97	3.18

Figure 2. Palay: Production and Yield per Hectare, Philippines, 1998-2007

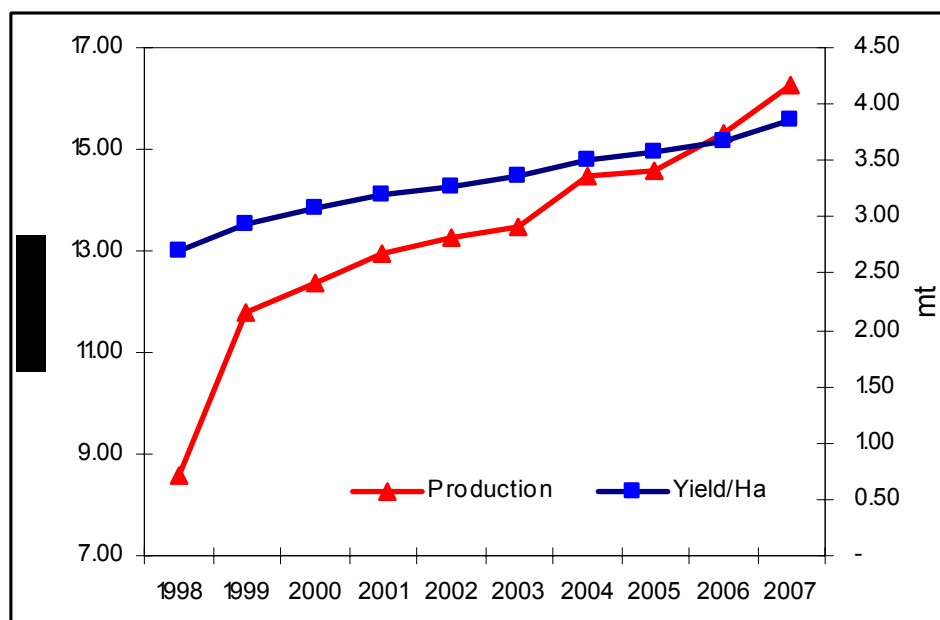


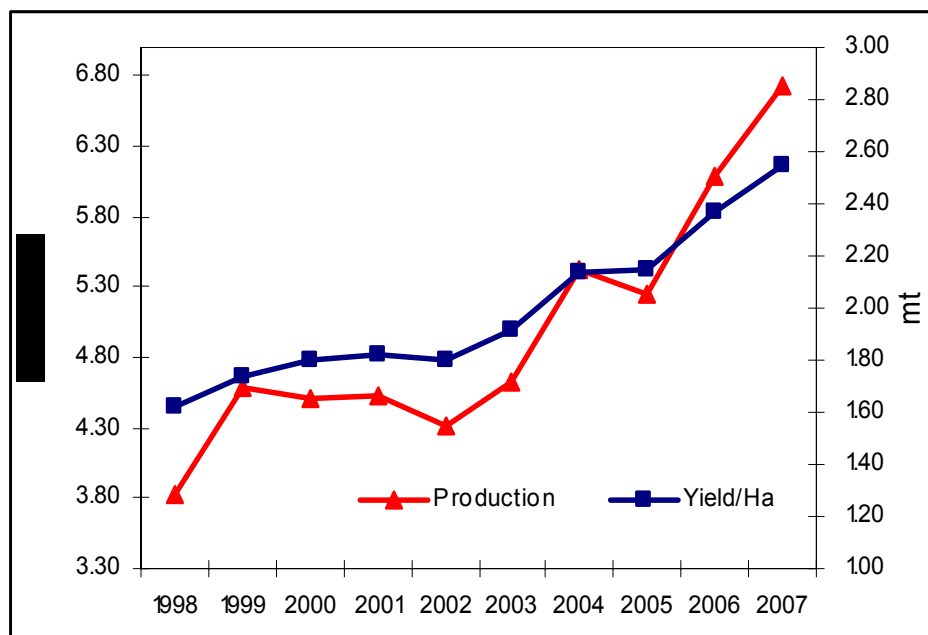
Table 14. Corn: Production, Area Harvested and Yield per Hectare, by Croptype, by Semester, Philippines, 2005-2007

ITEM	2005	2006	2007
PRODUCTION (million mt)			
TOTAL	5.25	6.08	6.74
White	2.25	2.36	2.53
Yellow	3.00	3.72	4.21
JANUARY-JUNE	1.97	2.60	2.75
White	0.72	0.87	0.92
Yellow	1.25	1.74	1.83
JULY-DECEMBER	3.28	3.48	3.98
White	1.53	1.49	1.60
Yellow	1.75	1.99	2.38
AREA HARVESTED (million has)			
TOTAL	2.44	2.57	2.65
White	1.49	1.47	1.47
Yellow	0.95	1.10	1.18
JANUARY-JUNE	0.89	1.01	1.05
White	0.50	0.52	0.55
Yellow	0.39	0.49	0.50
JULY-DECEMBER	1.55	1.56	1.60
White	0.99	0.95	0.92
Yellow	0.56	0.61	0.68
YIELD PER HECTARE (mt)			
TOTAL	2.15	2.37	2.54
White	1.51	1.60	1.72
Yellow	3.16	3.39	3.57
JANUARY-JUNE	2.21	2.57	2.62
White	1.45	1.67	1.69
Yellow	3.17	3.52	3.63

Table 14. Corn: Production, Area Harvested and Yield per Hectare, by Croptype, by Semester, Philippines, 2005-2007 *(concluded)*

ITEM	2005	2006	2007
JULY-DECEMBER	2.12	2.23	2.49
White	1.54	1.57	1.74
Yellow	3.15	3.28	3.53

Figure 3. Corn: Production and Yield per Hectare, Philippines 1998-2007



**LIVESTOCK AND
POULTRY SUB-SECTOR
STATISTICS**

SELECTED STATISTICS ON AGRICULTURE 2008

Table 15. Livestock and Poultry: Volume of Production by Type, Philippines, 2005-2007

ITEM	2005	2006	2007
		('000 mt)	
LIVESTOCK (Liveweight)	2,241.2	2,292.4	2,349.9
Carabao	133.5	130.4	137.0
Cattle	246.7	238.3	236.9
Hog	1,771.3	1,836.1	1,886.0
Goat	77.3	74.8	76.6
Dairy	12.3	12.8	13.4
POULTRY (Liveweight)	1,265.1	1,252.0	1,254.1
Chicken	1,215.7	1,206.0	1,211.6
Duck	49.4	46.0	42.5
Egg	373.6	380.3	382.1
<i>Chicken</i>	320.3	330.3	335.1
<i>Duck</i>	53.2	50.0	47.0

Table 16. Livestock and Poultry: Value of Production by Type, Philippines, 2005-2007

ITEM	2005	2006	2007
		(million pesos, at current prices)	
LIVESTOCK (Liveweight)	154,618.3	155,372.8	R 163,082.5
Carabao	6,487.7	6,781.3	7,243.8
Cattle	15,713.0	15,887.8	R 15,669.0
Hog	126,983.1	127,116.0	134,415.9
Goat	5,090.3	5,220.9	5,354.7
Dairy	344.2	366.7	R 399.1
POULTRY (Liveweight)	106,298.8	R 110,174.3	R 118,247.8
Chicken	79,687.2	81,739.3	87,406.3
Duck	2,778.5	2,627.4	R 2,502.6
Chicken Eggs	20,820.8	22,951.9	R 25,414.7
Duck Eggs	3,012.3	R 2,855.7	2,924.2

Table 17. Livestock and Poultry: Inventory by Type, Philippines, as of January 1, 2005-2008

ITEM	2005	2006	2007	2008P
LIVESTOCK ('000 head)				
CARABAO	3,327	3,360	3,384 R	3,339
Dairy	13.1	13.4	13.2	13.4
CATTLE	2,548	2,519	2,566	2,558
Dairy	10.0	11.3	12.1 R	13.9
HOG	12,140	13,047	13,459	13,701
GOAT	3,535	3,734	4,049	4,162
Dairy	1.2	1.1	0.9 R	0.9
POULTRY ('000 birds)				
CHICKEN	136,001	134,333	135,640 R	154,265
Broiler	40,380	35,987	38,408 R	52,231
Layer	21,679	21,375	23,345 R	25,174
Native ^{2/}	73,943	76,971	73,887 R	76,861
DUCK	10,439	11,147	10,162 R	10,428

2/ Includes gamefowls in the backyard.

Table 18. Livestock and Poultry : Total Number of Head/Birds Slaughtered/Dressed by Type, Philippines, 2005-2007

ITEM	2005	2006	2007P
NUMBER OF ANIMALS			
SLAUGHTERED ('000 head)			
Carabao	356	389 R	459
Cattle	737	714 R	746
Hog	20,975	23,197	23,964
Goat	2,062	2,559 R	2,762
NUMBER OF BIRDS			
DRESSED ('000 birds)			
Chicken	558,443	589,378 R	592,702
Duck	10,930	12,136	15,429

Figure 4. Livestock: Volume of Production by Type, Philippines, 1998-2007

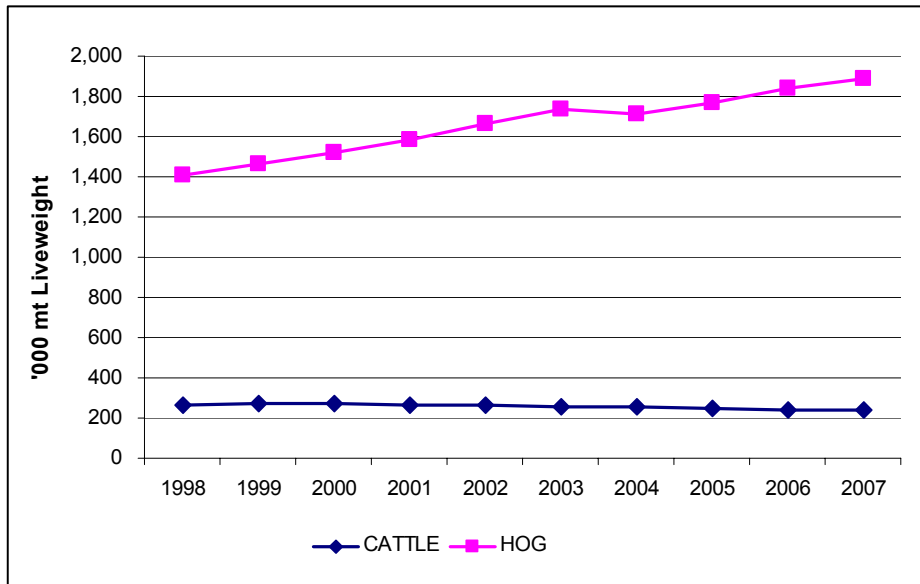


Figure 4a. Poultry: Volume of Production by Type, Philippines, 1998-2007

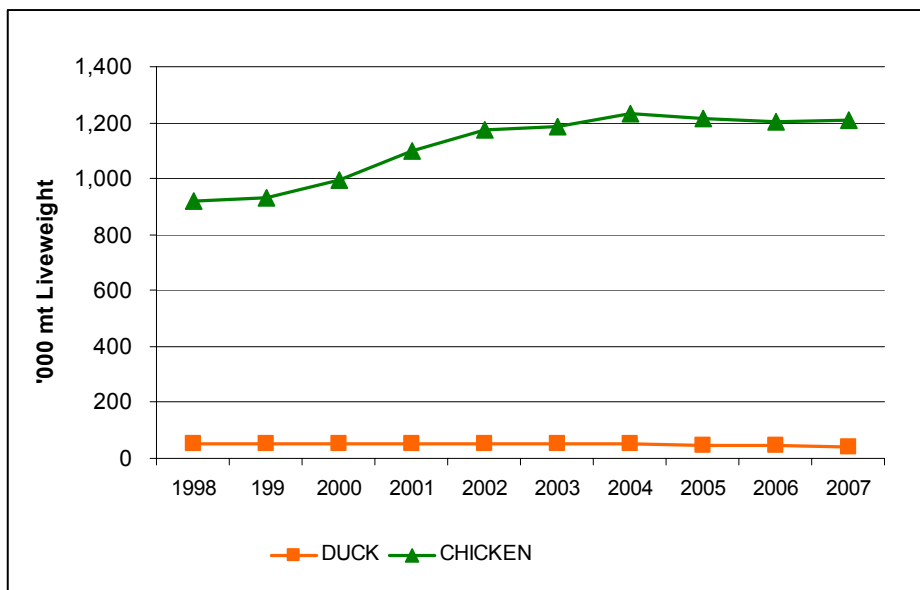


Table 19. Livestock: Percentage Distribution of Production by Region, Philippines, 2007

REGION	CARABAO	CATTLE	HOG	GOAT
PHILIPPINES (‘000 mt)	137.0	236.9	1,886.0	76.6
LUZON	40.61	45.87	51.19	36.15
CAR	3.10	2.62	2.36	1.35
Ilocos	7.06	11.83	3.89	13.09
Cagayan Valley	9.92	5.53	4.05	3.12
Central Luzon	3.60	7.16	16.34	8.94
CALABARZON	4.44	8.91	15.52	3.65
MIMAROPA	5.25	4.51	3.24	2.92
Bicol	7.24	5.32	5.78	3.08
VISAYAS	23.71	19.13	21.86	23.50
Western Visayas	14.05	7.93	8.43	10.57
Central Visayas	3.85	10.02	7.20	10.80
Eastern Visayas	5.81	1.18	6.23	2.12
MINDANAO	35.68	35.00	26.95	40.35
Zamboanga Peninsula	5.14	6.76	4.74	5.50
Northern Mindanao	5.04	12.59	6.22	5.71
Davao Region	8.10	4.42	6.87	9.68
SOCCKSARGEN	9.25	6.11	5.47	9.40
Caraga	3.18	0.59	3.15	2.26
ARMM	4.96	4.53	0.51	7.80

Table 20. Poultry: Percentage Distribution of Production by Region, Philippines, 2007

REGION	CHICKEN	DUCK	CHICKEN EGGS	DUCK EGGS
PHILIPPINES (^{'000} mt)	1211.6	42.5	335.1	47.0
LUZON	65.67	61.01	58.49	55.22
CAR	0.56	2.54	0.78	1.80
Ilocos	5.71	5.36	4.40	4.53
Cagayan Valley	2.99	14.40	2.82	12.88
Central Luzon	33.68	27.12	18.59	23.67
CALABARZON	20.18	7.41	26.01	8.32
MIMAROPA	0.66	0.77	1.22	0.75
Bicol	1.90	3.40	4.67	3.27
VISAYAS	14.47	12.22	19.42	14.10
Western Visayas	5.91	6.99	6.93	9.90
Central Visayas	5.63	0.75	10.92	0.72
Eastern Visayas	2.93	4.48	1.57	3.48
MINDANAO	19.86	26.77	22.09	30.68
Zamboanga Peninsula	2.20	2.11	2.63	3.34
Northern Mindanao	6.17	5.15	8.84	6.97
Davao Region	6.64	4.99	6.12	4.39
SOCCSKSARGEN	2.88	9.06	2.44	9.14
Caraga	1.26	1.98	0.89	1.94
ARMM	0.71	3.50	1.17	4.91

**FISHERIES SECTOR
STATISTICS**

Table 21. Fisheries: Volume of Production by Sub-Sector, Philippines, 2005-2007

ITEM	2005	2006	2007
	('000 mt)		
Total	4,161.8	4,408.5	4,711.3
Commercial	1,134.0	1,080.7	1,192.1
Municipal	1,132.0	1,235.5	1,304.4
Marine	988.2	1,074.1	1,136.1
Inland	143.8	161.4	168.3
Aquaculture	1,895.8	2,092.3	2,214.8
Brackishwater Fishpond ^{3/}	277.2	281.3	294.5
Freshwater Fishcage/pen ^{4/}	114.4	126.6	158.9
Freshwater Fishpond	84.5	118.3	135.2
Marine Fishcage/pen	44.5	60.6	80.5
Others	1,375.2	1,505.5	1,545.7
Oyster	16.5	16.9	20.5
Mussel	20.1	19.7	20.1
Seaweed	1,338.6	1,468.9	1,505.1

3/ includes brackishwater pen/cage

4/ includes small farm reservoir and rice fish culture

Table 22. Fisheries: Value of Production by Sub-Sector, Philippines, 2005-2007

ITEM	2005	2006	2007
	(million pesos, at current prices)		
Total	146,392.9	163,374.5	180,545.2
Commercial	47,272.7	48,556.0	54,737.5
Municipal	49,950.4	59,146.6	64,210.4
Marine	45,318.6	53,939.8	58,420.2
Inland	4,631.8	5,206.8	5,790.2
Aquaculture	49,169.8	55,671.9	61,597.3

Table 23. Fisheries: Percentage Distribution of Production by Sub-Sector and Region, Philippines, 2007

REGION	MARINE	INLAND	AQUA-CULTURE
PHILIPPINES (‘000 mt)	2,328.2	168.3	2,214.8
LUZON	34.69	66.32	42.60
CAR	-	0.53	0.13
Ilocos	1.80	1.66	4.61
Cagayan Valley	1.59	5.38	0.59
Central Luzon	1.64	8.13	9.37
NCR - M.M.	3.78	-	0.13
CALABARZON	5.54	47.67	8.03
MIMAROPA	12.66	0.45	16.73
Bicol	7.68	2.50	3.01
VISAYAS	22.27	5.39	13.47
Western Visayas	11.00	3.53	6.60
Central Visayas	4.63	0.12	5.33
Eastern Visayas	6.64	1.74	1.54
Mindanao	43.04	28.28	43.92
Zamboanga Peninsula	16.76	0.43	10.00
Northern Mindanao	3.58	1.38	2.59
Davao Region	2.20	0.09	0.82
SOCCSKSARGEN	10.36	12.24	1.15
Caraga	3.34	3.01	1.18
ARMM	6.80	11.13	28.18

**Table 24. Fisheries: Volume of Production
by Major Species, Philippines, 2005-2007**

MAJOR SPECIES	2005	2006	2007
	('000 mt)		
Marine Species	2,122.2	2,154.8	2,328.2
Roundscad	280.8	260.1	320.2
Indian sardines	247.1	209.7	206.9
Frigate tuna	174.0	175.4	191.5
Skipjack	143.1	164.3	185.9
Fimbriated sardines	84.2	89.2	100.4
Yellowfin tuna	114.0	113.4	134.5
Bigeye tuna	21.7	29.5	34.2
Anchovies	68.9	70.6	76.0
Bigeye scad	91.5	94.0	95.0
Slipmouth	67.7	67.6	62.6
Indian mackerel	84.3	89.1	88.0
Squid	59.8	57.6	64.1
Flying fish	27.9	31.0	30.2
Blue crabs	34.4	31.0	33.5
Threadfin breams	45.3	51.2	55.6
Indo-pacific mackerel	46.8	50.8	49.5
Eastern little tuna	77.7	78.3	73.1
Siganid	22.4	25.8	31.9
Snapper	12.5	14.8	15.9
Crevalle	37.4	40.8	40.0
Cavalla	17.9	21.8	25.0
Other species	362.8	388.8	414.2
Aquaculture Species	1,895.8	2,092.3	2,214.8
Seaweeds	1,338.6	1,468.9	1,505.1
Milkfish	289.2	315.1	349.7
Tilapia	163.0	202.0	241.2
Tiger prawn	37.7	38.2	39.8
Carp	17.2	16.6	20.0
Oyster	16.5	16.8	20.5
Mussel	20.1	19.7	20.1
Mudcrab	6.8	7.8	9.3

**Table 24. Fisheries: Volume of Production
by Major Species, Philippines, 2005-2007** *(concluded)*

MAJOR SPECIES	2005	2006	2007
	('000 mt)		
Catfish	2.4	2.4	2.6
Other species	4.3	4.8	6.5
Inland Species	143.8	161.4	168.3
Snail (<i>Suso</i>)	52.5	58.0	54.2
Tilapia	32.5	39.7	37.6
Carp (<i>Carpa</i>)	9.7	10.1	15.4
Mudfish (<i>Dalag</i>)	8.1	8.3	8.9
Freshwater goby (<i>Biya</i>)	5.4	5.7	5.5
Freshwater catfish (<i>Kanduli</i>)	3.0	2.0	2.3
Gourami	3.8	5.1	5.3
Freshwater shrimp (<i>Hipon</i>)	4.7	4.7	5.0
Other fish species	15.9	11.6	21.3
Other crustaceans	4.0	3.9	5.2
Other molluscs	4.2	5.3	7.6

**Figure 5. Fisheries: Volume of Production,
Philippines, 1998-2007**

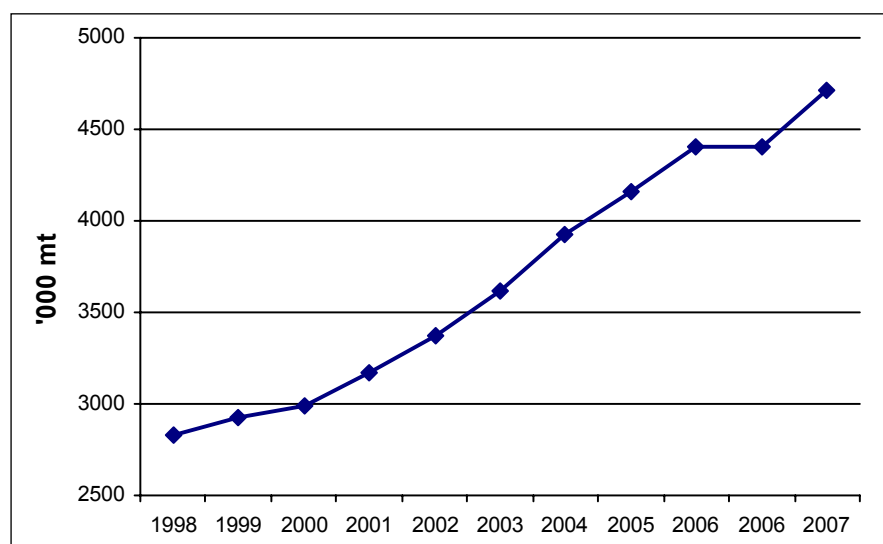


Table 25. Aquaculture: Value of Production by Culture Environment and Species, Philippines, 2005-2007

ENVIRONMENT/SPECIES	2005	2006	2007
	(million pesos, at current prices)		
All Types of Culture			
Environment	49,169.8	55,671.9	61,597.3
Brackishwater Fishpond	29,499.4	31,368.1	32,956.0
Freshwater Fishcage/pen	5,605.8	6,308.2	8,542.1
Freshwater Fishpond	4,616.0	6,895.1	7,593.2
Marine Fishcage/pen	3,162.9	4,507.7	5,923.9
Others ^{5/}	6,285.7	6,592.8	6,582.1
All Species	49,169.8	55,671.9	61,597.3
Seaweeds	6,040.9	6,346.7	6,299.3
Milkfish	17,577.0	20,149.2	22,320.4
Tilapia	8,900.6	11,385.6	13,729.2
Tiger Prawn	13,623.6	14,292.2	14,935.0
Mussel	138.9	125.8	140.7
Oyster	106.0	120.3	142.0
Carp	365.7	327.7	350.7
Mudcrab	1,693.5	2,023.8	2,301.9
Catfish	146.5	156.9	175.0
Other species	577.1	743.7	1,203.1

5/ Others include seaweeds, mussel and oyster

**PRODUCTION
COSTS AND RETURNS**

Table 26. All Palay: Production Costs and Returns by Season, Philippines, 2007P

ITEM	DRY	WET	AVERAGE
	(pesos per hectare)		
Gross Returns	41,392	43,616	42,609
Cash Cost	12,675	12,811	12,699
Non-Cash Cost	9,651	10,294	9,981
Imputed Cost	8,240	7,385	7,805
Total Cost	30,566	30,489	30,486
Net Returns	10,826	13,127	12,124
Net Profit-Cost Ratio	0.35	0.43	0.40
Cost Per Kilogram (pesos)	8.20	7.91	8.02

Table 26a. Irrigated Palay: Production Costs and Returns by Season, Philippines, 2007P

ITEM	DRY	WET	AVERAGE
	(pesos per hectare)		
Gross Returns	46,354	47,906	47,149
Cash Cost	14,196	14,525	14,267
Non-Cash Cost	10,544	10,972	10,765
Imputed Cost	8,592	7,650	8,055
Total Cost	33,332	33,148	33,086
Net Returns	13,022	14,758	14,063
Net Profit-Cost Ratio	0.39	0.45	0.43
Cost Per Kilogram (pesos)	7.98	7.83	7.87

Table 26b. Non-irrigated Palay: Production Costs and Returns by Season, Philippines, 2007P

ITEM	DRY	WET	AVERAGE
	(pesos per hectare)		
Gross Returns	27,262	35,975	32,834
Cash Cost	9,075	8,894	9,019
Non-Cash Cost	7,744	8,616	8,143
Imputed Cost	7,418	7,045	7,225
Total Cost	24,238	24,555	24,387
Net Returns	3,024	11,420	8,447
Net Profit-Cost Ratio	0.12	0.47	0.35
Cost Per Kilogram (pesos)	9.87	7.73	8.33

Table 27. All Corn: Production Costs and Returns by Season, Philippines, 2007P

ITEM	DRY	WET	AVERAGE
	(pesos per hectare)		
Gross Returns	27,227	23,549	25,211
Cash Cost	8,159	8,660	8,397
Non-Cash Cost	2,225	2,222	2,225
Imputed Cost	6,985	6,007	6,490
Total Cost	17,369	16,889	17,112
Net Returns	9,858	6,660	8,099
Net Profit-Cost Ratio	0.57	0.39	0.47
Cost Per Kilogram (pesos)	6.62	6.78	6.73

Table 27a. White Corn: Production Costs and Returns by Season, Philippines, 2007P

ITEM	DRY	WET	AVERAGE
	(pesos per hectare)		
Gross Returns	17,272	15,719	16,546
Cash Cost	5,490	6,290	5,907
Non-Cash Cost	1,794	1,883	1,850
Imputed Cost	6,809	5,951	6,355
Total Cost	14,093	14,124	14,112
Net Returns	3,179	1,595	2,434
Net Profit-Cost Ratio	0.23	0.11	0.17
Cost Per Kilogram (pesos)	8.31	8.14	8.20

Table 27b. Yellow Corn: Production Costs and Returns by Season, Philippines, 2007P

ITEM	DRY	WET	AVERAGE
	(pesos per hectare)		
Gross Returns	37,996	34,237	36,021
Cash Cost	12,226	13,260	12,701
Non-Cash Cost	2,626	2,498	2,555
Imputed Cost	7,245	6,105	6,715
Total Cost	22,097	21,863	21,971
Net Returns	15,899	12,374	14,050
Net Profit-Cost Ratio	0.72	0.57	0.64
Cost Per Kilogram (pesos)	6.09	6.20	6.15

Table 28. Other Major Crops: Production Costs and Returns, Philippines, 2007P

ITEM	^{6/} MANGO	PINE- APPLE	^{6/} COFFEE	EGG- PLANT
	(pesos per hectare)			
Gross Returns	122,020	182,676	43,608	116,396
Cash Cost	30,933	47,370	16,743	64,786
Non-Cash Cost	3,955	534	882	2,255
Imputed Cost	17,070	13,766	7,603	31,326
Total Cost	51,958	61,670	25,228	98,367
Net Returns	70,062	121,006	18,380	18,029
Net Profit-Cost Ratio	1.35	1.96	0.73	0.18
Cost Per Kilogram (pesos)	9.35	1.65	31.97	10.12

6/ the cost of production refers to maintenance cost.

PRICE STATISTICS

**Table 29. Consumer Price Index, Philippines,
2005-2007 (2000=100)**

ITEM	2005	2006	2007
ALL ITEMS	129.8	137.9	141.8
Food, Beverages and Tobacco	123.8	130.6	134.9
Non-Food	135.8	145.3	148.7
Clothing	118.4	122.0	124.8
Housing and Repair	126.9	131.9	133.9
Fuel, Light and Water	156.2	176.4	182.1
Services	148.5	161.7	166.2
Miscellaneous	117.1	120.6	122.5

Source: NSO

**Table 30. Producer Price Index, Philippines,
2005-2007 (1994=100)**

ITEM	2005	2006	2007
ALL ITEMS	161.6	170.8	179.2
Cereals	182.0	187.7	202.6
Vegetables and Legumes	156.8	188.5	169.7
Rootcrops	193.4	239.8	238.6
Fruits	121.4	129.6	134.2
Commercial Crops	170.6	191.6	208.7
Livestock	168.5	165.7	169.8
Poultry	153.6	159.1	166.3

Table 31. Cereals: Average Domestic and World Prices by Type, Philippines, 2005-2007

ITEM	2005	2006	2007
DOMESTIC PRICE (pesos per kilogram)			
Palay/Rice, <i>Special</i>			
<i>Farm</i>	10.43	10.46	11.22
<i>Wholesale</i>	20.93	21.39	22.59
<i>Retail</i>	22.88	23.56	24.72
Corngrain			
Corngrain, <i>white</i>			
<i>Farm</i>	8.41	9.03	9.62
<i>Wholesale</i>	9.57	11.42	11.88
<i>Retail</i>	15.25	15.72	15.31
Corngrain, <i>yellow</i>			
<i>Farm</i>	7.54	9.11	10.09
<i>Wholesale</i>	9.48	10.85	11.44
<i>Retail</i>	14.30	14.65	15.79
WORLD PRICE (US dollar per kilogram)			
Cereals			
Rice			
<i>5% brokens</i>	0.29	0.30	0.33
<i>25% brokens</i>	0.27	0.28	0.31
<i>35% brokens</i>	0.26	0.27	0.30
Corn			
<i>Yellow</i>	0.10	0.12	0.16

Sources: BAS and World Bank

**Table 32. Selected Crops: Average Annual Prices,
Philippines, 2005-2007**

ITEM	2005	2006	2007
(pesos per kilogram)			
Coconut			
Copra (corriente)			
<i>Farm</i>	13.78	12.75	17.74
<i>Wholesale</i>	13.66	12.06	17.04
Matured nuts			
<i>Farm</i>	3.58	3.37	4.03
<i>Wholesale</i>	11.68	11.89	12.41
<i>Retail</i>	10.49	10.57	11.52
Young nuts			
<i>Farm</i>	2.99	2.81	3.36
Sugar , centrifugal			
<i>Farm</i>	17.04	22.08	21.73
Coffee , dry beans			
Robusta			
<i>Farm</i>	39.61	45.60	57.12
<i>Wholesale</i>	41.74	46.61	59.94
Arabica			
<i>Farm</i>	61.21	51.02	53.46
Excelsa			
<i>Farm</i>	35.24	40.98	47.27
<i>Wholesale</i>	40.11	45.04	69.36
Rubber (cup lump)			
<i>Farm</i>	26.38	36.02	38.29
<i>Wholesale</i>	24.53	34.29	38.18
Banana			
Bungulan			
<i>Farm</i>	6.27	4.58	4.71
<i>Wholesale</i>	6.37	6.23	6.16

**Table 32. Selected Crops: Average Annual Prices,
Philippines, 2005-2007** *(concluded)*

ITEM	2005	2006	2007
	(pesos per kilogram)		
Latundan			
<i>Farm</i>	6.73	6.93	7.26
<i>Wholesale</i>	11.60	12.10	12.40
<i>Retail</i>	15.40	15.90	17.40
Lakatan			
<i>Farm</i>	8.61	8.83	9.41
<i>Wholesale</i>	15.66	15.39	16.92
<i>Retail</i>	20.70	21.60	24.21
Saba			
<i>Farm</i>	4.60	4.52	5.31
<i>Wholesale</i>	9.18	8.82	10.17
<i>Retail</i>	11.88	12.15	14.94
Pineapple Hawaiian			
<i>Farm</i>	5.24	4.30	4.89
<i>Wholesale</i>	6.90	6.70	7.09
<i>Retail</i>	11.02	11.54	12.21
Mango Carabao			
<i>Farm</i>	23.87	24.75	25.22
<i>Wholesale</i>	34.74	38.27	36.50
<i>Retail</i>	46.72	50.88	50.42
Cassava			
<i>Farm</i>	3.90	5.15	4.70
<i>Wholesale</i>	4.79	5.21	6.13
Camote			
<i>Farm</i>	7.10	7.96	8.39
<i>Wholesale</i>	9.51	11.11	11.54
<i>Retail</i>	14.54	16.87	18.00

Table 33. Selected Livestock and Poultry: Average Annual Prices, Philippines, 2005-2007

ITEM	2005	2006	2007
	(pesos per kilogram)		
LIVESTOCK ^{7/}			
Carabao			
<i>Farm (liveweight)</i>	48.52	52.01	52.80
Cattle			
<i>Farm (liveweight)</i>	63.65	66.61	66.16
<i>Retail (beef lean meat)</i>	174.27	178.44	185.92
Hog			
<i>Farm (liveweight)</i>	71.67	69.30	71.26
<i>Retail (pork lean meat)</i>	139.28	138.44	139.32
Goat			
<i>Farm</i>	65.87	69.72	69.93
POULTRY			
Chicken (broiler) ^{7/}			
<i>Farm</i>	76.73	78.52	80.63
<i>Wholesale</i> ^{8/}	64.40	68.19	72.14
<i>Retail</i>	88.13	90.19	91.95
Duck ^{8/}			
<i>Farm</i>	61.58	63.88	67.10

7/ Backyard

8/ Metro Manila

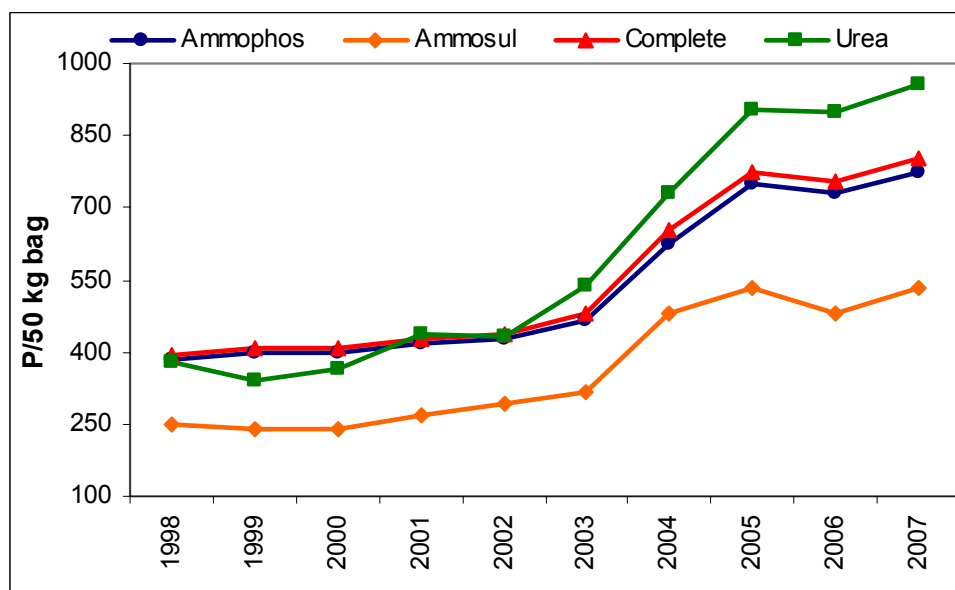
Table 34. Selected Fish Species: Average Annual Wholesale and Retail Prices, Philippines, 2005-2007

ITEM	2005	2006	2007
	(pesos per kilogram)		
FISHERY PRODUCTS			
Bangus (Milkfish)			
<i>Wholesale</i>	69.82	73.50	75.45
<i>Retail</i>	87.36	89.59	96.46
Dilis (Anchovies)			
<i>Wholesale</i>	38.98	41.43	43.77
<i>Retail</i>	55.91	60.52	66.85
Galunggong (Roundscad)			
<i>Wholesale</i>	47.43	53.31	52.47
<i>Retail</i>	66.99	73.43	74.97
Sapsap (Slipmouth)			
<i>Wholesale</i>	43.85	54.94	54.51
<i>Retail</i>	91.89	100.49	102.86
Tilapia			
<i>Wholesale</i>	53.97	54.57	56.32
<i>Retail</i>	69.29	70.46	74.11
Tulingan (Frigate Tuna)			
<i>Wholesale</i>	55.63	60.90	62.21
<i>Retail</i>	67.81	72.27	75.49

Table 35. Fertilizers: Average Dealers' Prices by Grade, Philippines, 2005-2007 (P/50 kg bag)

ITEM	2005	2006	2007
UREA	905.38	899.64	954.61
AMMOSUL	534.41	482.48	533.64
COMPLETE	771.44	754.71	801.46
AMMOPHOS	748.61	728.51	773.12

Figure 6. Fertilizers: Average Dealers' Prices by Grade, Philippines, 1998-2007



**AGRICULTURAL
FOREIGN TRADE
STATISTICS**

Table 36. Top Agricultural Exports: Volume and Value, Philippines, 2005-2007

ITEM	2005	2006	2007P
VOLUME OF TOP EXPORTS ('000 mt)			
Coconut Oil	1,152.32	1,069.48	888.85
Banana, Fresh	2,024.32	2,303.93	2199.32
Pineapple & Products	536.72	683.65	587.82
Tuna	45.05	59.79	73.93
Desiccated Coconut	125.54	136.20	130.72
Milk and Cream & Products	37.55	33.86	35.94
Tobacco Manufactured	21.06	19.17	17.68
Seaweeds & Carageenan	30.81	29.74	26.18
Shrimps & Prawns	12.67	13.17	10.12
Centrifugal Sugar	219.34	214.64	234.58
Mango, fresh	31.27	26.12	26.34
VALUE OF TOTAL AGRICULTURAL EXPORTS			
(FOB in million US\$)	2,691.19	2,780.69	3,534.98
VALUE OF TOP EXPORTS (FOB in million US \$)			
Coconut Oil	657.22	578.72	733.81
Banana, Fresh	362.58	404.16	396.28
Pineapple & Products	204.28	221.52	247.42
Tuna	102.01	143.33	210.87
Desiccated Coconut	127.14	138.82	157.43
Milk and Cream & Products	79.94	93.12	138.76
Tobacco Manufactured	112.81	103.41	97.89
Seaweeds & Carageenan	71.90	71.59	91.64
Shrimps & Prawns	93.51	98.54	84.85
Centrifugal Sugar	64.84	82.33	77.49
Mango, fresh	26.63	23.96	23.28

Table 37. Top Agricultural Exports: Volume and Value, by Major Country of Destination, Philippines, 2007

COMMODITY/COUNTRY OF DESTINATION	VOLUME	VALUE	% SHARE (VALUE)
VOLUME AND VALUE ('000 mt, FOB in million US\$)			
Coconut Oil			
(crude and refined)	888.85	733.81	100.00
United States of America	376.74	306.07	41.71
Netherlands	321.31	269.96	36.79
Japan (Excludes Okinawa)	65.55	50.37	6.86
Italy	38.98	31.32	4.27
Malaysia (Federation of Malaya)	29.53	24.16	3.29
Others	56.74	51.93	7.08
Banana fresh			
	2,199.32	396.28	100.00
Japan (Excludes Okinawa)	921.68	175.23	44.22
Iran, Islamic Republic of	425.83	73.49	18.54
Korea, Republic of (South)	274.62	52.93	13.36
United Arab Emirates	166.97	26.13	6.59
China, People's Republic of	139.17	22.14	5.59
Others	271.05	46.36	11.70
Pineapple and Pineapple			
	587.82	247.42	100.00
United States of America	199.81	116.00	46.88
Japan (Excludes Okinawa)	179.70	42.49	17.17
Korea, Republic of (South)	78.05	20.87	8.44
Netherlands	19.05	14.73	5.95
Canada	14.30	8.28	3.35
Others	96.91	45.05	18.21
Tuna			
	73.93	210.87	500.00
United States of America	18.12	69.09	32.76
Germany	12.49	31.69	15.03
Thailand	7.50	11.79	5.59
Japan (Excludes Okinawa)	1.73	11.23	5.33
Spain	4.49	10.57	5.01
Others	29.60	76.50	36.28

Table 37. Top Agricultural Exports: Volume and Value, by Major Country of Destination, Philippines, 2007 *(continued)*

COMMODITY/COUNTRY OF DESTINATION	VOLUME	VALUE	% SHARE (VALUE)
Dessicated Coconut	130.72	157.43	100.00
United States of America	34.32	44.53	28.29
U.K. Great Britain and Northern Ireland	17.11	19.82	12.59
Australia	8.29	10.24	6.50
Netherlands	8.54	9.84	6.25
Canada	7.91	9.73	6.18
Others	54.55	63.27	40.19
Milk and Cream and Products	35.94	138.76	100.00
Indonesia (Includes West Irian)	18.05	67.92	48.95
Malaysia (Federation of Malaya)	9.29	34.94	25.18
South Africa	4.05	17.28	12.45
Thailand	1.63	7.45	5.37
Vietnam	0.89	4.19	3.02
Others	2.03	6.98	5.03
Tobacco Manufactured	17.68	97.89	100.00
Thailand	10.45	63.42	64.79
Singapore	1.64	7.21	7.37
Korea, Republic of (South)	1.10	7.20	7.36
Vietnam	0.74	4.04	4.13
Indonesia	0.64	3.37	3.44
Others	3.11	12.65	12.92
Seaweed and Carageenan	26.18	91.64	100.00
United States of America	4.47	16.03	17.49
Denmark	1.56	8.16	8.90
France	4.12	7.88	8.60
Belgium	1.28	5.01	5.47
Thailand	0.91	4.80	5.24
Others	13.84	49.76	54.30

Table 37. Top Agricultural Exports: Volume and Value, by Major Country of Destination, Philippines, 2007 *(concluded)*

COMMODITY/COUNTRY OF DESTINATION	VOLUME	VALUE	% SHARE (VALUE)
Shrimps and Prawns	10.12	84.85	100.00
Japan (Excludes Okinawa)	4.52	41.51	48.92
Korea, Republic of (South)	2.75	21.03	24.78
United States of America	1.06	7.75	9.13
Canada	0.21	2.60	3.06
Hongkong	0.36	2.38	2.80
Others	1.22	9.58	11.29
Centrifugal Sugar	234.58	77.49	100.00
United States of America	176.22	64.18	82.82
Indonesia	34.77	7.8	10.07
Japan (Excludes Okinawa)	22.01	4.9	6.32
United Arab Emirates	1.57	0.59	0.76
France	0.01	0.02	0.03

Source: NSO

Table 38. Exports of Selected Commodities: Volume and Value, Philippines, 2005-2007

ITEM	2005	2006	2007P
VOLUME OF EXPORTS ('000 mt)			
Abaca	13.44	14.17	0.79
Nata de Coco	6.00	4.75	4.59
Asparagus	3.12	3.62	2.02
Papaws (fresh/dried)	4.14	4.73	5.48
Shallots	20.66	13.30	11.47
Onions (fresh/dried/pow dered)	0.38	0.09	0.38
Kaong	0.64	0.68	0.93
Manioc (Cassava) & Tapioca	0.60	0.10	0.97
Coconut (Young)	2.79	2.07	0.78
Yam (fresh/dried/pow dered)	0.22	0.26	0.27
Garlic	5.94	3.85	0.04
VALUE OF EXPORTS (FOB in million US \$)			
Abaca	11.91	12.87	15.43
Nata de Coco	4.39	3.62	3.94
Asparagus	6.67	7.67	5.83
Papaws (fresh/dried)	5.09	5.70	6.83
Shallots	4.38	3.28	3.10
Onions (fresh/dried/pow dered)	0.11	0.04	0.10
Kaong	1.13	1.23	1.62
Manioc (Cassava) & Tapioca	0.83	0.12	1.26
Coconut (Young)	0.69	0.62	0.17
Yam (fresh/dried/pow dered)	0.48	0.49	0.49
Garlic	1.98	1.26	0.16

Table 39. Selected Philippine Exports: Percentage Share in World Market, 2004-2005

COMMODITY	2004		2005	
	WORLD	PHIL.	WORLD	PHIL.
('000 MT)				
VOLUME OF EXPORTS				
Coconut oil	2,032.53	959.40	2,385.65	1,152.32
Banana fresh	16,262.61	1,797.34	17,824.65	2,024.32
Pineapple & Pineapple products	3,532.25	527.56	3,915.09	536.72
Mango Fresh	908.44	33.66	---	---
Dessicated Coconut	289.23	105.83	277.32	125.54

COMMODITY	2004	2005
	PHILIPPINE SHARE (%)	
('000 MT)		
VOLUME OF EXPORTS		
Coconut oil	47.2	48.3
Banana fresh	11.05	11.36
Pineapple & Pineapple products	14.94	13.71
Mango Fresh	3.71	
Dessicated Coconut	36.59	45.27

Sources: FAO and NSO

Table 40. Top Agricultural Imports: Volume and Value, Philippines, 2005-2007

ITEM	2005	2006	2007P
VOLUME OF TOP IMPORTS ('000 mt)			
Rice	1,822.20	1,715.82	1,805.61
Milk & Cream & Products	243.42	267.45	262.27
Wheat and Meslin	2,049.84	2,675.16	1,871.80
Soya bean Oil Cake/Meal	1,433.07	1,356.23	1,322.49
Tobacco, Unmanufacture	72.44	63.89	58.81
Meat of Bovine Animals	93.86	92.01	104.52
Urea	570.29	525.80	462.60
Food preparations for infant use	22.16	16.99	17.41
Rubber	23.48	39.91	2,049.94
Coffee	33.02	17.16	30.79
VALUE OF TOTAL AGRICULTURAL IMPORTS (CIF in million US \$)			
	3,975.62	4,315.32	4,919.14
VALUE OF TOP IMPORTS (CIF in million US \$)			
Rice	549.95	515.04	657.14
Milk & Cream & Products	367.22	413.04	588.72
Wheat and Meslin	377.23	531.79	424.44
Soya bean Oil Cake/Meal	384.23	317.91	392.02
Tobacco, Unmanufacture	191.01	169.40	182.49
Meat of Bovine Animals	114.44	117.69	139.27
Urea	51.27	119.11	123.35
Food preparations for infant use	101.48	82.12	97.76
Rubber	41.60	74.24	85.31
Coffee	51.27	36.51	69.86

Table 41. Other Major Agricultural Imports: Volume and Value, Philippines, 2005-2007

ITEM	2005	2006	2007P
VOLUME OF IMPORTS ('000 mt)			
LIVESTOCK & POULTRY			
Live Bovine (Head)	0.02	0.02	0.01
Meat of Bovine, frozen	93.86	92.01	104.75
Live Chicken (Head)	0.03	0.02	0.02
Chicken Meat, frozen	26.09	32.76	35.82
VEGETABLES			
Garlic	27.42	41.82	52.20
Onion	30.67	76.25	3.89
Cauliflower & Headed brocolli	0.20	0.17	0.23
Potatoes	10.77	12.63	11.90
VALUE OF IMPORTS (CIF in million US \$)			
LIVESTOCK & POULTRY			
Live Bovine (Head)	12.34	11.17	6.48
Meat of Bovine, frozen	114.44	117.69	138.78
Live Chicken (Head)	1.89	1.91	1.16
Chicken Meat, frozen	17.27	20.63	22.80
VEGETABLES			
Garlic	6.72	10.65	11.57
Onion	5.00	12.02	2.38
Cauliflower & Headed brocolli	0.08	0.08	0.08
Potatoes	2.91	4.45	4.62

Table 42. Top Agricultural Imports: Volume and Value, by Major Country of Origin, Philippines, 2007

COMMODITY/COUNTRY OF ORIGIN	VOLUME	VALUE	% SHARE (VALUE)
VOLUME AND VALUE ('000 mt, CIF in million US\$)			
RICE	1,805.61	657.14	100.00
Vietnam	1,377.67	498.04	75.79
Thailand	403.69	150.45	22.89
Pakistan, Islamic Rep. of	17.71	6.15	0.94
India	0.64	1.06	0.16
Malaysia	4.14	0.99	0.15
Others	1.76	0.45	0.07
MILK AND CREAM AND PRODUCTS	262.27	588.72	100.00
New Zealand (Excludes Western Samoa)	95.09	257.37	43.72
United States of America	40.45	104.15	17.69
Australia	32.99	78.54	13.34
Thailand	26.78	29.76	5.06
Netherlands	6.73	19.11	3.25
Others	60.23	99.79	16.95
WHEAT (including spelt) AND MESLIN	1,871.80	424.44	100.00
United States of America	1,292.30	300.59	70.82
Canada	361.88	78.43	18.48
China, People's Republic of	203.58	41.81	9.85
Australia	9.03	2.33	0.55
Pakistan, Islamic Rep. of	4.63	1.12	0.26
Others	0.38	0.16	0.04

Table 42. Top Agricultural Imports: Volume and Value, by Major Country of Origin, Philippines, 2007 *(continued)*

COMMODITY/COUNTRY OF ORIGIN	VOLUME	VALUE	% SHARE (VALUE)
SOYABEAN OIL/			
CAKE MEAL	1,322.54	392.02	100.00
Argentina	912.01	260.61	66.48
United States of America	303.56	100.54	25.65
India	96.93	28.84	7.36
Taiwan (Republic Of China)	1.73	0.75	0.19
China, People's Republic of	1.28	0.42	0.11
Others	7.03	0.86	0.22
TOBACCO			
UNMANUFACTURED	58.06	181.35	100.00
Brazil	15.27	50.67	27.94
Switzerland	9.75	27.11	14.95
China, People's Republic of	3.71	19.25	10.61
India	5.96	15.56	8.58
United States Of America	3.34	11.93	6.58
Others	20.03	56.83	31.34
MEAT OF BOVINE			
ANIMALS	104.52	139.27	100.00
India	62.11	81.47	58.50
Brazil	34.75	45.30	32.53
Australia	3.39	6.46	4.64
United States of America	1.21	2.71	1.95
New Zealand			
(Excludes Western Samoa)	2.20	2.40	1.72
Others	0.86	0.93	0.67
UREA			
	492.6	123.35	100.00
Saudi Arabia	173.06	42.85	34.74
China, People's Republic of	107.06	30.8	24.97
Indonesia (Includes West Irian)	94.02	21.7	17.59
Malaysia	49.67	13.55	10.99
Qatar	31.2	8.53	6.92
Others	7.59	5.92	4.80

Table 42. Top Agricultural Imports: Volume and Value, by Major Country of Origin, Philippines, 2007 *(concluded)*

COMMODITY/COUNTRY OF ORIGIN	VOLUME	VALUE	% SHARE (VALUE)
FOOD PREPARATION FOR			
INFANT USE	17.41	97.76	100.00
Ireland	8.99	51.42	52.60
Netherlands	1.83	14.26	14.59
Denmark	1.12	9.07	9.28
Malaysia (Federation of Malaya)	2.29	6.85	7.01
Germany	1.01	6.77	6.93
Others	2.17	9.39	9.61
RUBBER	2,049.76	84.97	100.00
Japan	7.72	19.05	22.42
Thailand	9.23	18.14	21.35
United States of America	804.71	9.93	11.69
Korea, Republic of South	405.94	9.22	10.85
Singapore	3.51	7.52	8.85
Others	818.65	21.11	24.84
COFFEE	30.79	69.86	100.00
Vietnam	16.68	28.66	41.02
Indonesia (Includes West Irian)	9.15	24.69	35.34
Malaysia	1.88	8.02	11.48
Singapore	2.47	6.04	8.65
Thailand	0.32	1.62	2.32
Others	0.29	0.83	1.19

Source: NSO

**SUPPLY
AND UTILIZATION
ACCOUNTS**

Table 43. Rice: Supply and Utilization Accounts, Philippines, 2005-2007

ITEM	2005	2006	2007P
	('000 mt)		
Gross Supply	13,423	13,834	14,679
Beginning Stocks	2,051	2,094	2,253
Production	9,550	10,024	10,621
Imports	1,822	1,716	1,805
Utilization			
Exports	b/	b/	b/
Seeds	200	204	210
Feeds & Waste	621	652	690
Processing	382	401	425
Net Food Disposable (NFD)	10,126	10,324	11,235
Per Capita NFD			
<i>kilograms/year</i>	118.80	118.70	126.84
<i>grams/day</i>	325.48	325.21	347.51
Ending Stock	2,094	2,253	2,119

Figure 7. Rice: Per Capita NFD, Philippines, 1998-2007

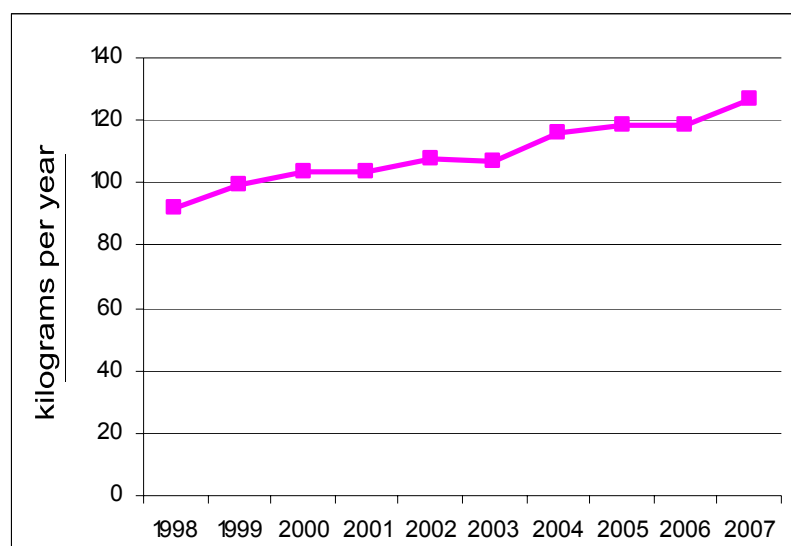


Table 44. Corn: Supply and Utilization Accounts, Philippines, 2005-2007

ITEM	2005	2006	2007P
	('000 mt)		
Gross Supply	5,515	6,593	7,066
Beginning Stocks	191	204	177
Production	5,253	6,082	6,737
Imports	71	307	152
Utilization			
Exports	b/	1	b/
Seeds	49	51	53
Feeds & Waste	3,414	3,953	4,575
Processing	701	811	921
Net Food Disposable (NFD)	1,147	1,601	1,344
Per Capita NFD			
<i>kilograms/year</i>	13.46	18.41	15.17
<i>grams/day</i>	36.88	50.44	41.56
Ending Stock	204	177	173

Figure 8. Corn: Per Capita NFD, Philippines, 1998-2007

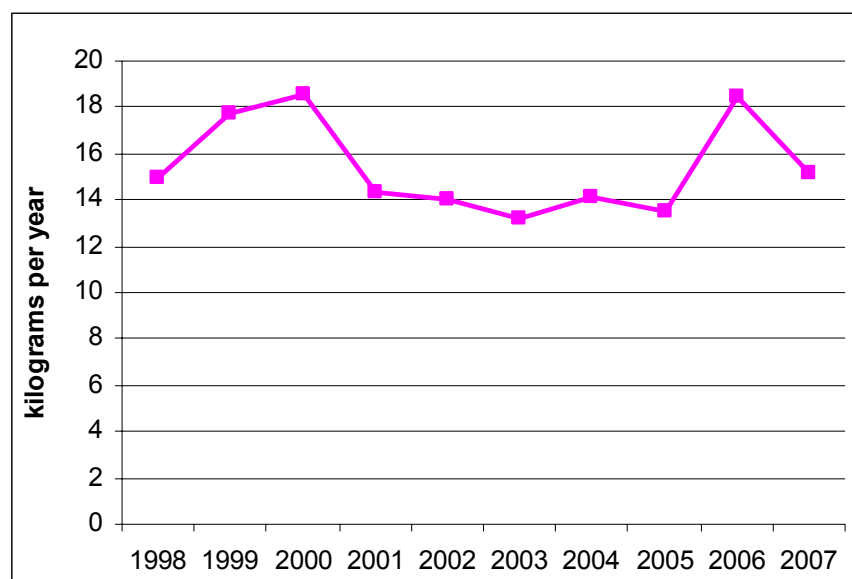


Table 45. Sugarcane: Supply and Utilization Accounts, Philippines, 2005-2007

ITEM	2005	2006	2007P
		(mt)	
Gross Supply	22,917,674	24,345,106	22,235,297
Production	22,917,674	24,345,106	22,235,297
Imports	-	-	-
Utilization			
Exports	3	50	2
Processing	22,688,497	24,101,655	22,012,944
Net Food			
Disposable (NFD)	229,174	243,401	222,351
Per Capita NFD			
<i>kilograms/year</i>	2.69	2.80	2.51
<i>grams/day</i>	7.37	7.67	6.88

Table 46. Banana: Supply and Utilization Accounts, Philippines, 2005-2007

ITEM	2005	2006	2007P
		(mt)	
Gross Supply	6,298,225	6,794,564	7,484,073
Production	6,298,225	6,794,564	7,484,073
Imports	-	-	-
Utilization			
Exports	2,024,321	2,311,540	2,199,321
Feeds & Waste	256,434	268,981	317,085
Processing	1,068,476	1,120,756	1,321,188
Net Food			
Disposable (NFD)	2,948,994	3,093,287	3,646,479
Per Capita NFD			
<i>kilograms/year</i>	34.60	35.57	41.17
<i>grams/day</i>	94.79	97.45	112.79

SELECTED STATISTICS ON AGRICULTURE 2008

Table 47. Coconut: Supply and Utilization Accounts, Philippines, 2005-2007

ITEM	2005	2006	2007P
		(mt)	
Gross Supply	14,824,585	14,957,910	14,852,927
Production	14,824,585	14,957,910	14,852,927
Imports	-	-	c/
Utilization			
Exports	2,963	2,147	793
Net Disposable Supply	14,821,622	14,955,763	14,852,134
Seeds	148,246	149,579	148,529
Processing			
<i>Food use</i>	5,929,834	5,983,164	5,941,171
<i>Non-food use</i>	8,003,676	8,076,112	8,020,152
Net Food			
Disposable (NFD)	739,866	746,908	742,282
Per Capita NFD			
<i>kilograms/year</i>	8.68	8.59	8.38
<i>grams/day</i>	23.78	23.53	22.96

Table 48. Chicken (dressed): Supply and Utilization Accounts, Philippines, 2005-2007

ITEM	2005	2006	2007P
		(mt)	
Gross Supply	649,708	691,672	699,817
Production	623,498	658,043	661,750
Imports	26,210	33,629	38,067
Utilization			
Exports	3,599	419	3,145
Net Food			
Disposable (NFD)	646,109	691,253	696,672
Per Capita NFD			
<i>kilograms/year</i>	7.58	7.95	7.87
<i>grams/day</i>	20.77	21.78	21.56

**Table 49. Pork: Supply and Utilization Accounts,
Philippines, 2005-2007**

ITEM	2005	2006	2007P
	(mt)		
Gross Supply	1,446,356	1,600,508	1,669,099
Production	1,415,041	1,564,957	1,616,715
Imports	31,315	35,551	52,384
Utilization			
Exports	-	-	116
Processing	16,980	18,779	19,401
Carcass			
Net Food			
Disposable (NFD)	1,167,017	1,287,461	1,335,116
Per Capita NFD			
<i>kilograms/year</i>	13.69	14.80	15.07
<i>grams/day</i>	37.51	40.55	41.29
Offals			
Net Food Disposable	262,359	294,267	314,466
Per Capita NFD			
<i>kilograms/year</i>	3.08	3.38	3.55
<i>grams/day</i>	8.44	9.26	9.73

**Table 50. Beef: Supply and Utilization Accounts,
Philippines, 2005-2007**

ITEM	2005	2006	2007P
		(mt)	
Gross Supply	203,588	201,170	219,783
Production	172,759	167,475	174,972
Imports	30,829	33,695	44,811
Utilization			
Processing	17,276	16,747	17,497
Carcass			
Net Food			
Disposable (NFD)	162,382	160,186	176,749
Per Capita NFD			
<i>kilograms/year</i>	1.91	1.84	2.00
<i>grams/day</i>	5.23	5.04	5.48
Offals			
Net Food Disposable	23,930	24,236	25,537
Per Capita NFD			
<i>kilograms/year</i>	0.28	0.28	0.29
<i>grams/day</i>	0.77	0.77	0.79

Table 51. Milkfish: Supply and Utilization Accounts, Philippines, 2005-2007

ITEM	2005	2006	2007P
		(mt)	
Gross Supply	289,801	318,727	352,002
Production	289,789	318,664	352,002
Imports	12	63	-
Utilization			
Exports	611	1,189	1,531
Feeds & Waste	8,694	9,560	10,560
Processing	92,732	101,972	112,641
Net Food			
Disposable (NFD)	187,764	206,006	227,270
Per Capita NFD			
<i>kilograms/year</i>	2.20	2.37	2.57
<i>grams/day</i>	6.03	6.49	7.04

Table 52. Tilapia: Supply and Utilization Accounts, Philippines, 2005-2007

ITEM	2005	2006	2007P
		(mt)	
Gross Supply	195,504	241,775	278,819
Production	195,504	241,775	278,819
Imports	-	-	-
Utilization			
Exports	-	-	52
Feeds & Waste	5,865	7,253	8,365
Net Food			
Disposable (NFD)	189,639	234,522	270,402
Per Capita NFD			
<i>kilograms/year</i>	2.22	2.70	3.05
<i>grams/day</i>	6.08	7.40	8.36

**TASK FORCE ON
Updating and Revision of
SELECTED STATISTICS ON AGRICULTURE
2008**

Advisers

ROMEO S. RECIDÉ

Director

MAURA S. LIZARONDO

Assistant Director

Members

ROBERTO M. DALAG	- Chief, AASID
MINDA C. MANGABAT	- Chief, CSD
VIRGINIA A. VILORIA	- Chief, FSD
NENITA T. YANSON	- OIC, LPSD
ERMINA V. TEPORA	- OIC, AMSAD
EPIFANIA C. GONZALES	- IDSS, ICTD
HAZEL ANN L. ALFORJA	- Secretariat
SUSAN B. GIPAL	- Circulation
QUIRINO G. SANTOS, JR.	- Graphic Designer
ROBERTO E. LANDICHO	- Duplicating Machine

Operator

Pointpersons

JUVY E. MOOC	- LPSD
REINELDA P. ADRIANO	- FSD
MICHELLE D. GUSTILO	- CSD
MA. CAROL G. DURAN	- AASID
GUADALUPE M. ERFE	- AMSAD

RODRIGO N. LABUGUEN

Chair