

ISSN-2012-0362



SELECTED STATISTICS ON AGRICULTURE *2011*



Department of Agriculture
BUREAU OF AGRICULTURAL STATISTICS
Philippines

TERMS OF USE

Selected Statistics on Agriculture 2011 is a publication of the Bureau of Agricultural Statistics (BAS), Department of Agriculture. The BAS reserves exclusive right to reproduce this publication in whatever form. Should any portion of this publication be included in a report/article, the title of the publication and the BAS should be cited as the source of the data. The BAS will not be responsible for any information derived from the processing of data contained in this publication.

ISSN-2012-0362
JUNE 2011

Please direct technical inquiries to:

The Office of the Director
Bureau of Agricultural Statistics
Ben-Lor Building, 1184 Quezon Avenue,
Quezon City 1100, Philippines.

Email: info@bas.gov.ph
Website: www.bas.gov.ph

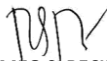
FOREWORD

The Selected Statistics on Agriculture (SSA) 2011 is the 22nd edition of the annual publication of the Bureau of Agricultural Statistics (BAS).

Based on the findings on the continuing review of the SSA, some revisions on the contents and additional indicators have been included to address the data needs of the BAS clients and stakeholders. This edition comes out with an indicator on Agricultural Trade Balances of the Philippines with its Major Trading Partners replacing the previous table on Selected Philippine Export and Percentage Shares in the World Market.

As in the past issues, the SSA 2011 provides a three-year series (2008 to 2010) of selected statistics and indicators on agriculture and fisheries. The SSA can be downloaded from the BAS website. This is also available in CDs. Printed copies of the SSA will also be made available to serve as quick reference material for interested parties.

We welcome comments and suggestions from readers on how this report can be further improved.



ROMEO S. RECIDÉ

Director

ACKNOWLEDGMENT

Our appreciation and gratitude go to the following agencies for their cooperation and support in sharing with us their data: *Agricultural Credit Policy Council (ACPC), Asian Development Bank (ADB), Bureau of Animal Industry (BAI), Bureau of Fisheries & Aquatic Resources (BFAR), Bangko Sentral ng Pilipinas (BSP), Cotton Development Administration (CODA), Department of Budget and Management (DBM), Development Bank of the Philippines (DBP), Food and Agriculture Organization (FAO), Fertilizer and Pesticide Authority (FPA), Fiber Industry Development Authority (FIDA), National Food Authority (NFA), National Irrigation Administration (NIA), National Statistical Coordination Board (NSCB), National Statistics Office (NSO), Philippine Coconut Authority (PCA), Philippine National Bank (PNB), Sugar Regulatory Administration (SRA) and World Bank (WB).*

TABLE OF CONTENTS

	Page/s
Foreword	i
Acknowledgment	ii
Table of Contents	iii
Explanatory Notes	iv
An Overview of the Philippine Agricultural Economy	1
Selected Macroeconomic and Agriculture Sector Statistics	4
Crops Subsector Statistics	10
Livestock & Poultry Subsector Statistics	20
Fisheries Subsector Statistics	26
Production Costs and Returns	32
Price Statistics	36
Agricultural Foreign Trade Statistics	44
Supply and Utilization Accounts	56

EXPLANATORY NOTES

1. Unless otherwise indicated, year refers to calendar year.
2. Sources of basic data other than the BAS are acknowledged at the bottom of each table.
3. As a rule, figures from source publications were copied to the extent possible. In some instances, however, figures were rounded-off or combined.
4. Figures may not add up to the totals due to rounding off.
5. Yield per hectare is derived prior to rounding-off the data on production and hectareage.
6. NFD represents the total amount of food available for consumption obtained by deducting from the total supply the total amount for allowances for non-food utilization and processed for food.
7. The following symbols and abbreviations are used in the tables:

---	<i>Data not yet available</i>
-	<i>None</i>
R	<i>Revised</i>
P	<i>Preliminary</i>
mt	<i>Metric Ton</i>
ha(s)	<i>Hectare/s</i>
kg	<i>Kilogram</i>
GNP	<i>Gross National Product</i>
GVA	<i>Gross Value Added</i>
GDP	<i>Gross Domestic Product</i>
PDB	<i>Private Development Bank</i>
SMB	<i>Savings and Mortgage Bank</i>
SSLA	<i>Stock Savings & Loan Assn.</i>
FOB	<i>Freight on Board</i>
CIF	<i>Cost Insurance Freight</i>
NFD	<i>Net Food Disposable</i>

AN OVERVIEW OF THE PHILIPPINE AGRICULTURAL ECONOMY

Economic Performance. In 2010, the country's Gross National Product (GNP) went up by 7.16 percent. Gross Domestic Product (GDP) grew by 7.33 percent. The agriculture and fishery sector, which contributed 17 percent to GDP, contracted by 0.34 percent.

Production Performance in Agriculture. In 2010, production of palay and corn dropped by 3.04 percent and 9.34 percent, respectively. Output losses were, likewise, registered for coconut at 1.00 percent and sugarcane at 21.82 percent. Growth rates of more than 3.0 percent each were recorded by mango, tobacco, onion, cabbage and eggplant.

Livestock production exhibited an upward trend. Output increases were noted in carabao at 5.05 percent, cattle at 2.71 percent, hog at 1.11 percent and goat at 1.38 percent. Dairy production went up by 11.14 percent. Production of chicken meat expanded by 4.01 percent while that of chicken eggs grew by 5.12 percent. Duck meat and duck egg production went down by 8.24 percent and 7.44 percent, respectively.

Production in commercial fisheries declined by 0.94 percent. Municipal fisheries and aquaculture had output gains corresponding to 1.69 percent and 2.77 percent.

Prices. On the average, prices received by farmers for their produce increased by 6.39 percent in 2010 from the previous year's levels. Prices of cereals went up by an average of 2.62 percent. Specifically, the price of palay grew by 1.93 percent. Price of matured yellow corn was higher by 9.41 percent while price of matured white corn was lower by 5.88 percent. Commercial crops posted the highest price increments which averaged 41.51 percent. Livestock and poultry products were priced higher by 6.02 percent and 0.75 percent, respectively. On the other hand, prices paid by consumers for food, beverages and tobacco items went up by 3.04 percent in 2010.

Agricultural Trade. The country's earnings from agricultural exports reached US\$ 4,097.59 million in 2010. This was 30.67 percent higher compared to the previous year's level. Coconut oil and tuna contributed 39.67 percent to the total agricultural export earnings of the country. Major markets for coconut oil were Netherlands and United States of America. Tuna was mostly shipped to United States of America and Germany.

Agricultural imports valued at US\$ 7,331.18 million in 2010 were 20.58 percent higher than the 2009 import expenditures. Rice, milk and cream and products accounted for 30.62 percent of the country's agricultural imports. The major suppliers of rice were Vietnam and Thailand while most of the milk and cream and products came from New Zealand and United States of America.

The deficit in the Philippine agricultural foreign trade in 2010 amounted to US\$ 3,233.59 million. It surpassed the 2009 record by 9.83 percent. The country recorded agricultural trade surplus with Japan and the European Union while it had trade deficits with Australia, USA, ASEAN countries and the rest of the world.

Employment and Wages. The country's labor force in 2010 totalled 38.89 million persons. Employment rate was 93 percent. About 11.96 million persons were employed in the agriculture sector. This comprised 33 percent of the national employment. The daily nominal wage rates of agricultural workers during the first half of the year were P 227.23 in palay farms and P 175.25 in corn farms.

Agricultural Support Services. The government expenditures for the agriculture sector at P89.22 billion in 2010 was up by 9.58 percent from last year's record. Agricultural expenditures shared 6 percent in the national expenditures. In the case of irrigation, the proportion of irrigated service area remained at around 49 percent of the total potential irrigable area.



**SELECTED
MACROECONOMIC AND
AGRICULTURE SECTOR
STATISTICS**

Table 1.1 Macroeconomic Growth Indicators, Philippines, 2008-2010

ITEM	2008	2009	2010
GNP (million pesos, at constant 1985 prices)	1,591,109	1,654,936	1,773,350
Growth Rate (%)	6.36	4.01	7.16
GDP (million pesos, at constant 1985 prices)	1,417,087	1,432,115	1,537,152
Growth Rate (%)	3.69	1.06	7.33
GVA IN AGRICULTURE EXCLUDING FORESTRY (million pesos, at constant 1985 prices)			
	258,027	258,102	257,214
Growth Rate (%)			
Agriculture Sector	3.21	0.03	-0.34
Crops	2.91	-1.85	-2.56
Livestock	-1.06	1.23	1.48
Poultry	4.72	1.81	3.74
Fisheries	5.48	2.28	1.76
Agricultural Activities and Services	2.52	2.09	-1.55

Source: NSCB

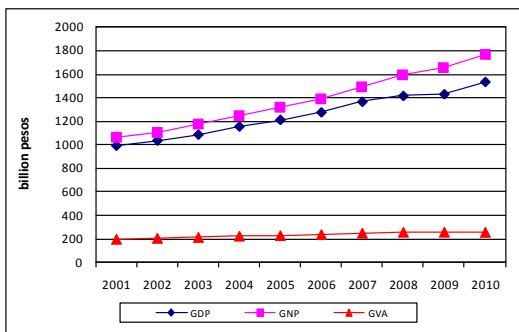


Figure 1. Macroeconomic Growth Indicators, Philippines, 2001-2010

Table 1.2 Population, Labor Force and Employment and Wage Rate Indices, Philippines, 2008-2010

ITEM	2008	2009	2010
POPULATION (million persons) ^{1/}	90.45	92.23	94.01
Male	45.48	46.37	47.26
Female	44.97	45.86	46.75
LABOR FORCE (million persons)	36.81	37.89	38.89
Employment	34.09	35.06	36.04
Agriculture	12.03	12.04	11.96
Unemployment	2.72	2.83	2.86
WAGE RATE INDICES IN AGRICULTURE (Without Meal) ^{2/}			
Nominal	144.60	149.30	161.60a
			148.60b
Real	93.30	93.30	97.80a
			90.00b

1/ 2000 Census-based population projections

2/ 2010 indices covered only the first semester wage rates for (a) palay and (b) corn; 2000 as base year

Sources: NSO and BAS

Table 1.3 Peso Exchange Rate, Inflation Rate and Purchasing Power, Philippines, 2008-2010

ITEM	2008	2009	2010
OFFICIAL EXCHANGE RATE (Pesos per US dollar)	44.48	47.64	45.11
HEADLINE INFLATION RATE (%) ^{3/}	9.31	3.23	3.81
PURCHASING POWER OF PESO	0.65	0.63	0.60

3/ 2000 as base year

Source: BSP

Table 1.4 Share of Agriculture in the National Government Expenditures, Philippines, 2008-2010

ITEM	2008	2009R	2010P
NATIONAL GOVERNMENT (million pesos)	1,314,613	1,434,146	1,540,600
AGRICULTURE (million pesos)	94,358	81,422	89,220
AGRICULTURE TO NATIONAL GOVERNMENT RATIO (%)	7.18	5.68	5.79

Source: DBM

Table 1.5 Supply of Fertilizer (All Grades) by Source, Philippines, 2008-2010

ITEM	2008	2009	2010P
TOTAL SUPPLY ('000 mt)	1,799.3	1,929.8	2,172.2
Production	287.1	196.1	44.4
Production to Total Supply Ratio (%)	16.0	10.2	2.0
Import	1,512.2	1,733.7	2,127.8
Import to Total Supply Ratio (%)	84.0	89.8	98.0

Source: FPA

Table 1.6 Share of Service Area in the Total Irrigable Area, Philippines, 2008-2010

ITEM	2008	2009	2010
SERVICE AREA (million has)	1.52	1.54	1.54
SERVICE AREA TO TOTAL IRRIGABLE AREA RATIO (%)	48.62	49.26	49.34

Source: NIA

Table 1.7 Agricultural Production Loans by Commodity and Sources, Philippines, 2008-2010

ITEM	2008	2009	2010
LOANS GRANTED BY COMMODITY (million pesos)			
FOOD COMMODITIES	71,177.1	79,492.9	...
Cereals	28,817.1	31,299.4	...
Palay	27,095.5	29,371.2	...
Corn	1,671.0	1,874.4	...
Sorghum	18.0	18.9	...
Soybeans & Feedgrains	32.6	34.9	...
Fruits, Vegetables and			
Rootcrops	12,937.7	14,714.1	...
Livestock and Poultry	23,813.2	27,346.3	...
Fisheries	5,609.1	6,133.1	...
EXPORT AND COMMERCIAL COMMODITIES	14,426.5	15,857.8	...
Abaca & Other Fibers	186.8	269.2	...
Coconut	5,933.4	6,513.3	...
Coffee & Cacao	1,224.4	1,407.7	...
Cotton	-	-	...
Rubber	87.2	102.5	...
Sugarcane	6,534.1	7,091.9	...
Tobacco	460.6	473.2	...
FORESTRY	155.7	163.0	...
OTHERS	30,112.8	35,723.7	...
SUB-TOTAL	115,872.1	131,237.4	...
OTHER SOURCES OF LOANS			
SSLA	6,772.6	6,983.6	...
SMB	65,709.1	68,979.5	...
PDB	4,701.5	5,052.0	...
GRAND TOTAL	193,055.3	212,252.5	...

Source: ACPC

Table 1.7a Share of Agriculture in the Total Loans,
Philippines, 2008-2010

ITEM	2008	2009	2010
AGRICULTURAL PRODUCTION LOAN TO OUTPUT (GVA) RATIO (%)	17.5	18.5	...
AGRICULTURAL LOANS (million pesos, at current prices)	463,164.8	481,130.2	...
TOTAL LOANS (million pesos, at current prices)	21,038,347.3	21,356,756.1	...
AGRICULTURAL LOANS TO TOTAL LOANS GRANTED RATIO (%)	2.2	2.3	...

Source: ACPC



**CROPS SUBSECTOR
STATISTICS**

Table 2.1 Crops: Volume of Production, Philippines, 2008-2010

ITEM	2008	2009	2010
		(^{'000} mt)	
TOTAL	85,097.7	81,599.7	75,575.1
Palay	16,815.5	16,266.4	15,772.3
Corn	6,928.2	7,034.0	6,376.8
Coconut	15,319.5	15,667.6	15,510.3
Sugarcane	26,601.4	22,932.8	17,929.3
Banana	8,687.6	9,013.2	9,101.3
Pineapple	2,209.3	2,198.5	2,169.2
Coffee	97.4	96.4	94.5
Mango	884.0	771.4	825.7
Tobacco	32.5	36.4	40.5
Abaca	68.4	65.8	66.5
Peanut	30.2	31.0	29.6
Mongo	29.6	27.7	27.1
Cassava	1,941.6	2,043.7	2,101.5
Camote	572.7	560.5	541.3
Tomato	195.8	198.9	204.3
Garlic	11.3	10.5	9.6
Onion	128.9	127.1	135.4
Cabbage	128.9	124.7	129.0
Eggplant	199.6	200.9	208.2
Calamansi	199.7	192.2	188.3
Rubber	411.0	391.0	395.2
Others	3,604.5	3,608.9	3,719.0

Table 2.2 Crops: Area Planted/Harvested,^{1/} Philippines, 2008-2010

ITEM	2008	2009	2010
	('000 has)		
TOTAL	12,894.5	13,031.5	12,805.6
Palay	4,460.0	4,532.3	4,354.2
Corn	2,661.0	2,683.9	2,499.0
Coconut	3,379.7	3,401.5	3,575.9
Sugarcane	398.0	404.0	354.9
Banana	438.6	446.4	449.4
Pineapple	58.3	58.8	58.5
Coffee	123.3	122.6	121.4
Mango	186.8	188.1	189.4
Tobacco	22.2	26.1	29.7
Abaca	137.5	135.1	135.1
Peanut	27.7	28.2	27.1
Mongo	39.9	38.7	40.1
Cassava	211.7	215.9	217.6
Camote	116.5	114.4	109.4
Tomato	17.6	17.7	17.7
Garlic	3.8	3.6	3.0
Onion	14.6	14.5	15.2
Cabbage	8.6	8.5	8.6
Eggplant	21.3	21.2	21.4
Calamansi	21.0	20.9	21.0
Rubber	123.3	128.3	138.7
Others	423.2	420.7	418.2

1/ Area planted for permanent crops and area harvested for temporary crops

Table 2.3 Crops: Value of Production, Philippines, 2008-2010

ITEM	2008	2009	2010
	(million pesos, at current prices)		
TOTAL	644,285.7_R	644,951.9_R	674,300.6
Palay	234,072.5	238,140.4	230,906.8
Corn	75,864.0	76,037.9	69,698.4
Coconut	80,121.1	65,020.4	81,273.9
Sugarcane	33,251.7	28,895.4	38,547.9
Banana	75,321.7	89,050.3	106,485.7
Pineapple	11,113.0	11,586.1	10,889.6
Coffee	6,218.0	5,586.8	5,503.2
Mango	19,881.4	18,144.5	17,892.3
Tobacco	2,583.2	2,446.2	2,544.7
Abaca	3,011.2	2,363.3	2,297.3
Peanut	766.8	844.5	877.3
Mongo	1,128.2 _R	1,073.4 _R	1,400.4
Cassava	10,581.6	11,894.5	12,020.3
Camote	5,342.9	5,229.7	5,472.1
Tomato	2,535.7	2,397.2	2,126.6
Garlic	601.3	799.9	716.8
Onion	5,297.7	3,572.9	2,695.4
Cabbage	1,350.5	1,990.5	929.8
Eggplant	3,446.7	3,142.9	2,446.8
Calamansi	1,916.8	3,394.1	2,380.6
Rubber	15,631.9	13,144.4	24,311.2
Others	54,247.7 _R	60,196.8 _R	52,883.6

Table 2.4 Major Crops: Percentage Distribution of Production by Region, Philippines, 2010

REGION	PALAY	CORN	COCO-NUT	SUGAR-CANE
PHILIPPINES ('000 mt)	15,772.3	6,376.8	15,510.3	17,929.3
LUZON (%)	57.01	35.98	23.46	16.39
CAR	2.54	2.70	0.01	0.04
Ilocos Region	9.88	5.62	0.24	0.11
Cagayan Valley	11.07	19.82	0.43	1.01
Central Luzon	18.76	3.10	1.36	4.69
CALABARZON	2.47	0.94	8.99	9.29
MIMAROPA	5.44	1.06	4.25	0.00
Bicol Region	6.85	2.74	8.19	1.25
VISAYAS (%)	19.17	8.10	17.22	64.86
Western Visayas	11.35	3.89	3.05	54.54
Central Visayas	1.71	2.80	2.77	8.35
Eastern Visayas	6.11	1.41	11.41	1.97
MINDANAO (%)	23.82	55.92	59.31	18.75
Zamboanga Peninsula	3.50	3.06	11.04	0.00
Northern Mindanao	3.72	18.08	11.33	14.22
Davao Region	2.55	3.17	16.99	1.43
SOCCSKSARGEN	7.51	16.69	5.57	2.82
Caraga	2.57	1.48	6.28	0.00
ARMM	3.95	13.42	8.09	0.27

Table 2.4a Major Crops: Percentage Distribution of Production by Region, Philippines, 2010

REGION	PINE-APPLE	BANANA	MANGO	COFFEE
PHILIPPINES ('000 mt)	2,169.2	9,101.3	825.7	94.5
LUZON (%)	10.68	9.75	57.39	18.86
CAR	0.03	0.28	0.45	5.93
Ilocos Region	0.01	0.45	35.24	0.11
Cagayan Valley	1.35	4.04	7.12	1.10
Central Luzon	0.07	0.64	7.80	1.87
CALABARZON	4.04	1.16	5.44	9.27
MIMAROPA	0.01	2.31	1.16	0.22
Bicol Region	5.17	0.86	0.18	0.36
VISAYAS (%)	1.20	8.71	14.82	6.40
Western Visayas	0.66	3.65	6.11	5.95
Central Visayas	0.19	2.00	8.60	0.23
Eastern Visayas	0.34	3.06	0.11	0.22
MINDANAO (%)	88.12	81.54	27.79	74.74
Zamboanga Peninsula	0.09	2.90	8.97	1.27
Northern Mindanao	49.22	18.70	4.55	6.30
Davao Region	1.05	41.80	4.11	23.99
SOCCSKSARGEN	37.49	11.47	6.81	29.37
Caraga	0.22	2.31	1.88	2.38
ARMM	0.05	4.36	1.47	11.43

Table 2.5 Palay: Production, Area Harvested and Yield per Hectare, by Ecosystem, by Semester, Philippines, 2008-2010

ITEM	2008	2009	2010
PRODUCTION (million mt)			
TOTAL	16.82	16.26	15.77
Irrigated	12.56	12.08	11.99
Rainfed	4.26	4.18	3.78
JANUARY-JUNE	7.12	7.38	6.62
Irrigated	5.81	5.98	5.53
Rainfed	1.31	1.40	1.09
JULY-DECEMBER	9.69	8.88	9.15
Irrigated	6.75	6.10	6.46
Rainfed	2.95	2.79	2.69
AREA HARVESTED (million has)			
TOTAL	4.46	4.53	4.36
Irrigated	3.03	3.06	3.01
Rainfed	1.43	1.48	1.35
JANUARY-JUNE	1.88	1.95	1.82
Irrigated	1.39	1.43	1.37
Rainfed	0.49	0.52	0.45
JULY-DECEMBER	2.58	2.59	2.54
Irrigated	1.64	1.63	1.64
Rainfed	0.94	0.96	0.90

Table 2.5 Palay: Production, Area ...*(Continued)*

ITEM	2008	2009	2010
YIELD PER HECTARE (mt)			
TOTAL	3.77	3.59	3.62
Irrigated	4.14	3.95	3.99
Rainfed	2.98	2.83	2.81
JANUARY-JUNE	3.79	3.79	3.64
Irrigated	4.18	4.19	4.03
Rainfed	2.69	2.69	2.44
JULY-DECEMBER	3.75	3.43	3.61
Irrigated	4.10	3.74	3.95
Rainfed	3.14	2.91	2.99

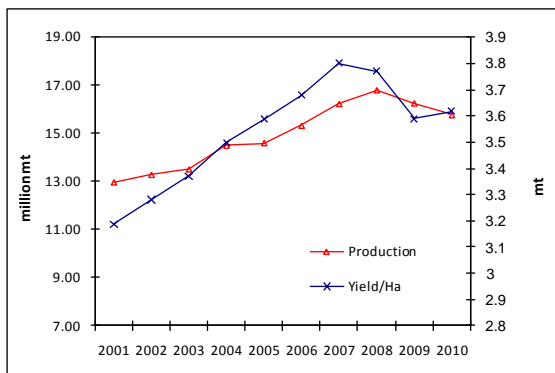
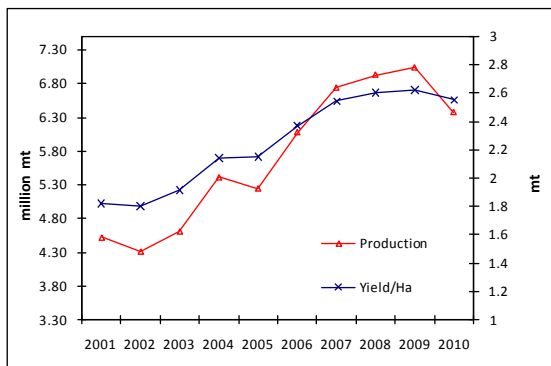
*Figure 2. Palay: Production and Yield per Hectare, Philippines, 2001-2010*

Table 2.6 Corn: Production, Area Harvested and Yield per Hectare, by Croptype, by Semester, Philippines, 2008-2010

ITEM	2008	2009	2010
PRODUCTION (million mt)			
TOTAL	6.93	7.03	6.38
White	2.25	2.32	2.17
Yellow	4.67	4.72	4.21
JANUARY-JUNE	3.29	3.22	2.41
White	0.89	0.87	0.75
Yellow	2.41	2.35	1.66
JULY-DECEMBER	3.64	3.82	3.96
White	1.37	1.45	1.42
Yellow	2.27	2.36	2.54
AREA HARVESTED (million has)			
TOTAL	2.66	2.68	2.50
White	1.37	1.40	1.34
Yellow	1.29	1.28	1.16
JANUARY-JUNE	1.14	1.13	0.97
White	0.51	0.51	0.47
Yellow	0.63	0.62	0.50
JULY-DECEMBER	1.52	1.55	1.53
White	0.86	0.90	0.87
Yellow	0.67	0.66	0.66

Table 2.6 Corn: Production, Area ...*(Continued)*

ITEM	2008	2009	2010
YIELD PER HECTARE (mt)			
TOTAL	2.60	2.62	2.55
White	1.65	1.65	1.61
Yellow	3.61	3.68	3.63
JANUARY-JUNE	2.90	2.85	2.50
White	1.74	1.71	1.61
Yellow	3.83	3.77	3.33
JULY-DECEMBER	2.39	2.46	2.59
White	1.59	1.62	1.63
Yellow	3.41	3.60	3.85

*Figure 3. Corn: Production and Yield Per Hectare, Philippines, 2001-2010*



**LIVESTOCK AND
POULTRY SUBSECTOR
STATISTICS**

Table 3.1 Livestock and Poultry: Volume of Production by Type, Philippines, 2008-2010

ITEM	2008	2009	2010
		(⁰ 000 mt)	
LIVESTOCK (liveweight)	2,327.1	2,355.0	2,392.2
Carabao	140.4	140.9	148.0
Cattle	239.2	245.1	251.7
Hog	1,855.7	1,877.3	1,898.2
Goat	78.0	77.4	78.4
Dairy	13.8	14.3	15.9
POULTRY (liveweight)	1,320.6	1,336.8	1,386.1
Chicken	1,281.3	1,300.9	1,353.1
Duck	39.2	35.9	33.0
Egg	393.2	408.1	424.0
Chicken	350.8	368.5	387.3
Duck	42.5	39.6	36.7

Table 3.2 Livestock and Poultry: Value of Production by Type, Philippines, 2008-2010

ITEM	2008	2009	2010
		(million pesos, at current prices)	
LIVESTOCK (liveweight)	184,062.2	196,410.4_R	210,456.4
Carabao	8,137.3	8,992.9	10,044.6
Cattle	17,487.4	18,917.6	20,583.1
Hog	152,152.1	161,244.7	172,049.2
Goat	5,873.4	6,800.2	7,306.8
Dairy	412.0	455.1 _R	472.6
POULTRY (liveweight)	131,688.8_R	145,093.5	151,531.7
Chicken	98,318.0	108,221.9	112,512.8
Duck	2,633.3 _R	2,465.5	2,499.6
Chicken Eggs	27,926.4 _R	31,462.8	33,659.8
Duck Eggs	2,811.0	2,943.3	2,859.6

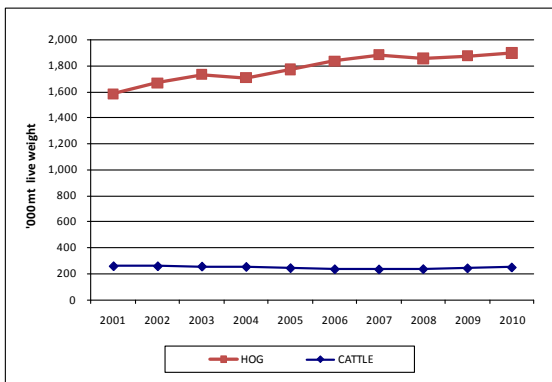


Figure 4. Livestock: Volume of Production by Type, Philippines, 2001-2010

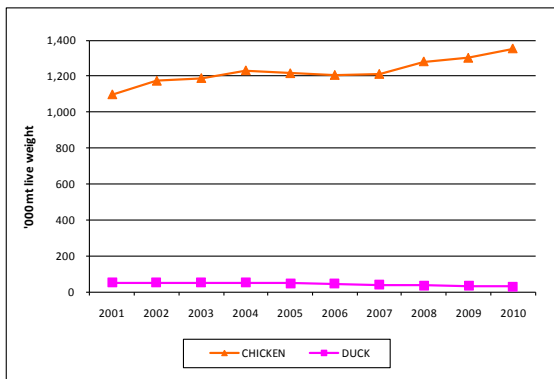


Figure 5. Poultry: Volume of Production by Type, Philippines, 2001-2010

Table 3.3 Livestock and Poultry: Inventory by Type, Philippines, as of January 1, 2008-2011

ITEM	2008	2009	2010	2011
LIVESTOCK ('000 head)				
Carabao	3,339	3,321	3270 _R	3,075
Dairy	13.4	13.6	13.9	14.70
Cattle	2,566	2,586	2571 _R	2,518
Dairy	13.9	15.1	16.9	17.40
Hog	13,701	13,596	13,398	12,303
Goat	4,174	4,222	4178 _R	3,877
Dairy	0.9	0.9	1.2	1.30
POULTRY ('000 birds)				
Chicken	154,259 _R	158,663	158,984 _R	162,722
Broiler	52,231 _R	56,942	52,213 _R	54,711
Layer	25,168	25,182	28,639 _R	31,450
Native 1/	76,861	76,540	78,132 _R	76,561
Duck	10,508	10,577	10,268 _R	10,108

1/ Includes gamefowls in the backyard

Table 3.4 Livestock and Poultry: Total Number of Head/Birds Slaughtered/Dressed by Type, Philippines, 2008-2010

ITEM	2008	2009	2010
NUMBER OF ANIMALS SLAUGHTERED ('000 head)			
Carabao	469	455	485
Cattle	786	808	831
Hog	23,802	24,144	24,246
Goat	3,047	3,110	3,158
NUMBER OF BIRDS DRESSED ('000 birds)			
Chicken 1/	727,563	740,418	777,952
Duck	15,110	14,673 _R	14,025

1/ Consists of dressed broiler, native chicken and culled layers only

Table 3.5 Livestock: Percentage Distribution of Production by Region, Philippines, 2010

REGION	CARABAO	CATTLE	HOG	GOAT
PHILIPPINES ('000 mt)	148.0	251.7	1,898.2	78.4
LUZON (%)	38.05	44.77	48.81	37.85
CAR	2.47	1.97	1.89	1.18
Ilocos Region	6.84	10.85	3.89	13.24
Cagayan Valley	9.18	5.21	3.48	2.45
Central Luzon	3.78	7.19	15.23	10.29
CALABARZON	4.41	9.82	14.59	4.18
MIMAROPA	4.97	4.26	3.50	2.93
Bicol Region	6.40	5.47	6.23	3.57
VISAYAS (%)	25.53	18.12	22.83	22.24
Western Visayas	14.37	7.56	9.54	9.56
Central Visayas	4.39	9.67	7.81	10.90
Eastern Visayas	6.77	0.89	5.48	1.78
MINDANAO (%)	36.42	37.10	28.35	39.91
Zamboanga Peninsula	4.70	5.61	4.96	4.91
Northern Mindanao	5.30	13.68	7.19	8.03
Davao Region	8.52	4.54	6.73	8.88
SOCCSKSARGEN	8.67	7.35	6.28	8.30
Caraga	3.00	0.54	2.57	1.88
ARMM	6.23	5.38	0.63	7.92

Table 3.6 Poultry: Percentage Distribution of Production by Region, Philippines, 2010

REGION	CHICKEN	CHICKEN EGGS	DUCK	DUCK EGGS
PHILIPPINES ('000 mt)	1353.1	387.3	33.0	36.7
LUZON (%)	66.14	60.99	59.45	54.15
CAR	0.58	0.75	2.89	2.15
Ilocos Region	5.54	4.33	5.63	4.05
Cagayan Valley	2.91	2.19	8.28	9.04
Central Luzon	33.87	19.50	35.21	28.67
CALABARZON	20.66	28.94	2.32	5.33
MIMAROPA	0.70	1.10	1.03	1.44
Bicol Region	1.88	4.18	4.09	3.47
VISAYAS (%)	14.88	18.16	14.41	13.55
Western Visayas	5.88	7.19	9.24	10.61
Central Visayas	5.80	10.10	0.67	1.06
Eastern Visayas	3.20	0.87	4.50	1.88
MINDANAO (%)	18.98	20.85	26.14	32.30
Zamboanga Peninsula	1.88	2.50	1.46	2.97
Northern Mindanao	8.78	8.92	4.81	9.32
Davao Region	4.49	5.54	4.63	3.92
SOCCKSARGEN	2.49	2.32	11.22	10.60
Caraga	0.86	0.60	0.70	1.45
ARMM	0.48	0.97	3.32	4.04



**FISHERIES SUBSECTOR
STATISTICS**

Table 4.1 Fisheries: Volume of Production, Philippines, 2008-2010

ITEM	2008	2009	2010
	('000 mt)		
TOTAL	4,966.9	5,079.9	5,159.5
Commercial	1,226.2	1,253.9	1,242.1
Municipal	1,333.0	1,348.6	1,371.4
Marine	1,151.3	1,159.9	1,184.1
Inland	181.7	188.7	187.3
Aquaculture	2,407.7	2,477.4	2,546.0
Brackishwater Fishpond ^{1/}	303.2	308.4	304.3
Freshwater Fishcage/pen	167.4	163.6	165.1
Freshwater Fishpond ^{2/}	143.7	144.9	143.2
Marine Fishcage/pen	83.6	80.6	88.7
Others	1,709.8	1,779.8	1,844.7
Oyster	20.2	19.9	22.5
Mussel	23.0	19.9	20.9
Seaweed	1,666.6	1,740.0	1,801.3

1/ Includes brackishwater pen/cage

2/ Includes small farm reservoir and rice fish

Table 4.2 Fisheries: Value of Production, Philippines, 2008-2010

ITEM	2008	2009	2010
	(million pesos, at current prices)		
TOTAL	215,813.5	215,582.1	221,051.0
Commercial	63,170.1	58,705.0	60,457.0
Municipal	70,973.9	75,383.7	77,736.5
Marine	63,874.2	67,558.8	70,199.0
Inland	7,099.7	7,824.9	7,537.5
Aquaculture	81,669.5	81,493.4	82,857.5

Table 4.3 Fisheries: Percentage Distribution of Production by Region, Philippines, 2010

REGION	MARINE	INLAND	AQUA-CULTURE
PHILIPPINES ('000 mt)	2,426.2	187.3	2,546.0
LUZON (%)	32.94	65.65	42.01
NCR-Metro Manila	3.76	0.00	0.09
CAR	0.00	0.49	0.10
Ilocos Region	1.69	2.92	3.57
Cagayan Valley	1.57	6.32	0.49
Central Luzon	1.35	6.54	8.63
CALABARZON	5.22	45.85	7.89
MIMAROPA	10.67	0.48	18.33
Bicol Region	8.68	3.05	2.91
VISAYAS (%)	22.12	4.71	13.67
Western Visayas	11.08	3.80	6.51
Central Visayas	4.12	0.10	5.52
Eastern Visayas	6.92	0.81	1.64
MINDANAO (%)	44.95	29.65	44.31
Zamboanga Peninsula	19.57	0.57	11.05
Northern Mindanao	3.41	2.24	2.89
Davao Region	1.68	0.09	1.10
SOCCSKSARGEN	9.61	13.02	0.96
Caraga	2.96	2.41	0.98
ARMM	7.72	11.32	27.33

Table 4.4 Fisheries: Volume of Production by Major Species, Philippines, 2008-2010

SECTOR/MAJOR SPECIES	2008	2009	2010
	('000 mt)		
Marine Species	2,377.5	2,413.9	2,426.2
Indian sardines	235.7	324.1	334.0
Roundscad	294.1	243.7	268.2
Skipjack	222.0	251.5	228.2
Yellowfin tuna	168.4	152.4	147.3
Frigate tuna	156.3	152.3	149.6
Fimbriated sardines	127.9	137.6	108.0
Bigeye scad	97.1	107.3	121.5
Indian mackerel	89.8	86.0	91.9
Anchovies	73.2	81.8	80.2
Squid	57.2	61.1	56.0
Slipmouth	59.1	60.9	64.1
Eastern little tuna	54.9	50.0	38.2
Indo-pacific mackerel	51.0	49.5	55.7
Threadfin breams	51.4	47.2	45.8
Crevalle	42.1	43.0	43.5
Blue crab	33.7	30.0	29.8
Cavalla	30.9	28.0	32.7
Flying fish	31.5	26.5	25.9
Siganid	29.8	26.5	25.9
Snapper	18.2	19.7	21.2
Bigeye tuna	35.1	5.7	11.6
Other species	418.0	429.0	446.9
Aquaculture Species	2,407.7	2,477.4	2,456.0
Seaweeds	1,666.6	1,740.0	1,801.3
Milkfish	350.8	347.6	349.4
Tilapia	257.1	260.9	258.8
Tiger prawn	45.3	47.8	48.2
Carp	20.7	15.7	16.7
Oyster	20.2	19.9	22.5
Mussel	23.0	19.9	20.9
Mudcrab	11.6	13.7	14.4
Catfish	2.7	2.9	3.0
Other species	9.7	9.0	10.8

Table 4.4 Fisheries: Volume of Production...*(Continued)*

SECTOR/MAJOR SPECIES	2008	2009	2010
	('000 mt)		
Inland Species	181.7	188.7	187.3
Snail (Suso)	56.2	53.4	53.4
Tilapia	42.7	43.5	44.9
Carp (Carpa)	12.0	12.8	12.3
Mudfish (Dalag)	10.0	10.5	9.9
Gourami	6.1	6.4	6.2
Freshwater goby (Biya)	6.1	5.9	5.6
Freshwater catfish (Hito)	5.5	5.7	5.1
Freshwater shrimp (Hipon)	5.0	5.0	4.9
Freshwater catfish (Kanduli)	2.5	1.9	2.0
Other fish species	23.1	30.5	30.3
Other crustaceans	5.9	5.8	5.2
Other molluscs	6.6	7.3	7.5

Table 4.5 Aquaculture: Value of Production by Culture Environment and Species, Philippines, 2008-2010

ENVIRONMENT/SPECIES	2008	2009	2010
	(million pesos, at current prices)		
All Types of Culture			
Environment	81,669.5	81,493.4	82,857.5
Brackishwater Fishpond ^{1/}	39,492.6	42,221.2	41,129.1
Freshwater Fishcage/pen	9,724.6	11,160.5	10,412.1
Freshwater Fishpond ^{2/}	8,679.2	9,822.7	8,947.3
Marine Fishcage/pen	10,621.3	8,381.3	10,040.2
Others ^{3/}	13,151.8	9,907.7	12,328.8
All Species	81,669.5	81,493.4	82,857.5
Seaweeds	12,848.4	9,591.3	11,974.7
Milkfish	26,789.6	28,467.8	27,673.9
Tilapia	15,475.9	17,990.3	16,529.1
Tiger Prawn	17,914.6	18,507.6	18,224.2
Mussel	181.5	181.8	195.8
Oyster	121.9	134.6	158.2
Carp	504.9	369.7	369.9
Mudcrab	2,916.0	3,674.4	3,900.6
Catfish	203.9	224.1	245.5
Other species	4,712.8	2,351.8	3,585.6

1/ includes brackishwater pen/cage

2/ includes small farm reservoir and rice fish

3/ Others include seaweeds, mussel and oyster



**PRODUCTION
COSTS AND RETURNS**

Table 5.1 All Palay: Production Costs and Returns by Season, Philippines, 2010P

ITEM	DRY	WET	AVERAGE
	(pesos per hectare)		
Gross Returns	55,546	52,258	53,859
Cash Costs	16,392	15,192	15,859
Non-Cash Costs	14,175	12,981	13,621
Imputed Costs	9,697	10,055	9,820
Total Costs	40,264	38,228	39,300
Net Returns	15,282	14,030	14,559
Net Profit-Cost Ratio	0.38	0.37	0.37
Cost Per Kilogram (pesos)	11.06	10.59	10.85

Table 5.1a Irrigated Palay: Production Costs and Returns by Season, Philippines, 2010P

ITEM	DRY	WET	AVERAGE
	(pesos per hectare)		
Gross Returns	61,498	57,196	59,272
Cash Costs	18,773	17,246	17,955
Non-Cash Costs	15,555	14,617	15,101
Imputed Costs	9,925	9,338	9,648
Total Costs	44,253	41,201	42,704
Net Returns	17,245	15,995	16,568
Net Profit-Cost Ratio	0.39	0.39	0.39
Cost Per Kilogram (pesos)	10.98	10.43	10.71

Table 5.1b Non-irrigated Palay: Production Costs and Returns by Season, Philippines, 2010P

ITEM	DRY	WET	AVERAGE
	(pesos per hectare)		
Gross Returns	37,234	43,295	39,019
Cash Costs	10,597	12,217	11,467
Non-Cash Costs	10,214	10,438	10,171
Imputed Costs	9,183	11,087	10,185
Total Costs	29,994	33,742	31,823
Net Returns	7,240	9,553	7,196
Net Profit-Cost Ratio	0.24	0.28	0.23
Cost Per Kilogram (pesos)	12.29	11.28	12.13

Table 5.2 Corn: Production Costs and Returns by Type, Philippines, 2010P

ITEM	WHITE	YELLOW	ALL
	(pesos per hectare)		
Gross Returns	17,820	40,840	28,506
Cash Costs	6,302	21,048	12,459
Non-Cash Costs	2,097	1,972	2,104
Imputed Costs	8,873	9,567	9,102
Total Costs	17,272	32,587	23,665
Net Returns	548	8,253	4,841
Net Profit-Cost Ratio	0.03	0.25	0.20
Cost Per Kilogram (pesos)	10.66	8.98	9.27

Table 5.3 Other Major Crops: Production Costs and Returns, Philippines, 2010P

ITEM	MANGO ^{1/}	PINEAPPLE	COFFEE ^{1/}
	(pesos per hectare)		
Gross Returns	107,929	185,996	52,637
Cash Costs	38,282	47,110	18,123
Non-Cash Costs	4,275	548	1,065
Imputed Costs	21,468	15,020	8,017
Total Costs	64,025	62,678	27,205
Net Returns	43,904	123,318	25,432
Net Profit-Cost Ratio	0.69	1.97	0.93
Cost Per Kilogram (pesos)	14.69	1.69	34.92

1/ the cost of production refers to maintenance cost.

Table 5.3 Other Major Crops: Production Costs and Returns, Philippines, 2010P

ITEM	ONION		TOMATO
	Bulb	Native	
(pesos per hectare)			
Gross Returns	222,071	300,581	141,324
Cash Costs	81,228	58,543	62,353
Non-Cash Costs	5,470	41,077	2,676
Imputed Costs	25,796	26,547	19,466
Total Costs	112,494	126,167	84,495
Net Returns	109,577	174,414	56,829
Net Profit-Cost Ratio	0.97	1.38	0.67
Cost Per Kilogram (pesos)	12.50	14.42	7.31



PRICE STATISTICS

Table 6.1 Consumer Price Index, Philippines,
2008-2010 (2000=100)

ITEM	2008	2009	2010P
ALL ITEMS	155.0	160.0	166.1
Food, Beverages and Tobacco	152.3	161.2	166.1
Non-Food	157.6	157.3	166.0
Clothing	130.1	133.4	136.0
Housing and Repair	139.6	143.6	146.1
Fuel, Light and Water	193.8	188.8	214.1
Services	180.5	180.1	188.0
Miscellaneous	126.1	129.4	131.2

Source: NSO

Table 6.2 Producer Price Index, Philippines,
2008-2010 (2006=100)

ITEM	2008	2009	2010P
ALL ITEMS	121.6	123.6	131.5
Cereals	131.0	133.8	137.3
Vegetables & Legumes	116.1	113.5	100.3
Rootcrops and Tubers	109.0	119.5	114.8
Fruits	113.6	124.9	125.7
Commercial Crops	126.8	109.6	155.1
Livestock	116.9	123.0	130.4
Poultry	111.6	120.7	121.6
Fishery	119.5	119.6	118.6

Table 6.3 Cereals: Average Domestic and World Prices by Type, Philippines, 2008-2010

ITEM	2008	2009	2010P
DOMESTIC PRICE (pesos per kilogram)			
Palay/Rice , Well milled			
Farm	14.13	14.66	14.87
Wholesale	29.81	31.17	31.45
Retail	32.71	34.12	34.34
Corngrain			
Corngrain, white			
Farm	11.58	11.80	11.00
Wholesale	13.71	16.24	15.05
Retail	17.19	21.21	19.55
Corngrain, yellow			
Farm	10.79	10.44	11.26
Wholesale	13.14	13.84	14.41
Retail	18.18	19.90	19.26
WORLD PRICE (US dollar per kilogram)			
Cereals			
Rice			
5% brokens	0.65	0.56	0.49
25% brokens	0.53	0.46	0.44
35% brokens	0.36	-	-
Corn			
Yellow	0.22	0.17	0.19

Sources: BAS and World Bank

Table 6.4 Selected Crops: Average Annual Prices, Philippines, 2008-2010

ITEM	2008	2009	2010P
(pesos per kilogram)			
Coconut			
Copra (corriente)			
Farm	22.97	13.73	21.33
Wholesale	21.12	12.73	19.14
Matured nuts			
Farm	5.27	4.15	5.34
Wholesale	14.64	16.45	12.80
Retail	14.00	13.85	14.26
Young nuts			
Farm	4.05	4.22	5.33
Coffee, dry beans			
Robusta			
Farm	67.96	57.62	56.45
Wholesale	71.33	63.90	50.84
Arabica			
Farm	56.78	60.22	67.57
Excelsa			
Farm	49.26	49.26	48.68
Wholesale	63.59	53.79	59.51
Rubber (cup lump)			
Farm	40.44	31.76	61.49
Wholesale	39.55	30.92	58.54
Banana			
Bungulan			
Farm	5.17	8.18	9.09
Wholesale	6.79	7.63	6.65
Latundan			
Farm	7.69	8.51	9.22
Wholesale	13.40	13.90	15.60
Retail	18.10	19.00	20.00

Table 6.4 Selected Crops: Average Annual...*(Continued)*

ITEM	2008	2009	2010P
	(pesos per kilogram)		
Lakatan			
Farm	10.47	11.92	14.26
Wholesale	19.44	20.70	24.30
Retail	25.83	27.63	29.52
Saba			
Farm	5.48	6.19	6.87
Wholesale	10.98	10.44	11.34
Retail	15.03	15.21	16.02
Pineapple Hawaiian			
Farm	5.02	5.26	5.02
Wholesale	7.68	8.19	9.85
Retail	12.79	13.40	14.00
Mango Carabao			
Farm	29.46	29.11	28.22
Wholesale	44.87	40.73	43.36
Retail	61.72	60.78	62.35
Cassava			
Farm	5.36	5.79	5.73
Wholesale	6.23	7.46	7.83
Camote			
Farm	9.27	9.36	10.03
Wholesale	12.31	13.69	14.39
Retail	19.77	21.68	22.70

Table 6.5 Selected Livestock and Poultry: Average Annual Prices, Philippines, 2008-2010

ITEM	2008	2009	2010P
(pesos per kilogram)			
LIVESTOCK ^{1/}			
Carabao			
Farm (liveweight)	57.80	63.73	67.95
Wholesale selling	61.39	63.27	67.95
Cattle			
Farm (liveweight)	72.98	77.07	81.79
Wholesale selling	73.26	74.16	78.23
Retail (beef lean meat)	199.92	211.71	222.51
Hog			
Farm (liveweight)	82.14	85.72	90.56
Wholesale selling	77.86	85.47	93.14
Retail (pork lean meat)	156.21	163.54	173.90
Goat			
Farm	75.29	87.85	93.17
Wholesale selling	81.53	83.03	87.78
POULTRY (P/kg)			
Chicken (broiler) ^{1/}			
Farm	79.38	89.69	94.64
Wholesale ^{2/}	80.61	88.19	77.32
Retail	100.03	102.96	113.13
Duck ^{1/}			
Farm	73.85	76.48	86.12

1/ Backyard

2/ Metro Manila

**Table 6.6 Selected Fish Species: Average Annual Prices
Philippines, 2008-2010**

ITEM	2008	2009	2010P
	(pesos per kilogram)		
FISHERY PRODUCTS			
Bangus (Milkfish)			
Wholesale	85.22	93.58	90.69
Retail	104.93	114.37	112.56
Dilis (Anchovies)			
Wholesale	48.40	47.91	44.45
Retail	71.39	73.85	74.22
Galunggong (Roundscad)			
Wholesale	61.08	64.82	64.25
Retail	84.04	87.99	87.45
Sapsap (Slipmouth)			
Wholesale	61.45	70.72	66.13
Retail	108.91	107.27	112.51
Tilapia			
Wholesale	62.12	68.99	67.89
Retail	80.38	86.49	87.61
Tulingan (Frigate Tuna)			
Wholesale	75.16	78.93	77.97
Retail	87.56	92.65	92.31

Table 6.7 Fertilizers: Average Dealers' Prices by Grade, Philippines, 2008-2010 (P/50 kg bag)

ITEM	2008	2009	2010P
UREA	1,524.75	1,022.69	981.11
AMMOSUL	901.49	604.43	544.49
COMPLETE	1,612.89	1,216.54	1,083.41
AMMOPHOS	1,564.58	1,111.08	951.47

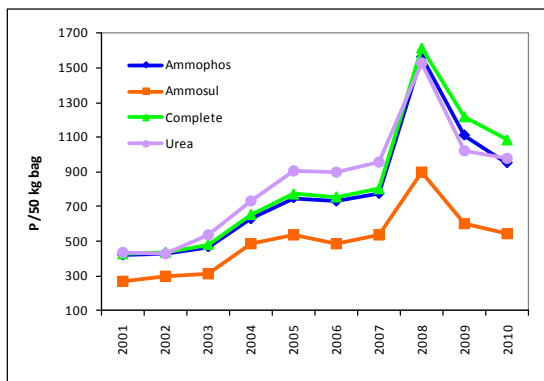


Figure 6. Fertilizers Average Dealers' Prices by Grade, Philippines, 2001-2010



**AGRICULTURAL
FOREIGN TRADE
STATISTICS**

Table 7.1 Top Agricultural Exports: Volume and Value, Philippines, 2008-2010

ITEM	2008	2009	2010P
VOLUME OF TOP EXPORTS ('000 mt)			
Coconut Oil	850.08	832.94	1,348.70
Tuna	108.24	105.25	110.49
Banana, Fresh	2,192.55	1,664.05	1,590.07
Pineapple & Products	586.15	487.70	402.15
Tobacco Manufactured	20.01	17.24	23.49
Seaweeds & Carageenan	26.25	24.08	34.16
Desiccated Coconut	142.66	116.42	109.17
Milk and Cream & Products	37.96	26.61	33.79
Fertilizer Manufactured	213.46	324.96	384.53
Unmanufactured Tobacco	23.64	30.09	33.45
Mango, Fresh	20.84	26.34	20.11
VALUE OF TOTAL AGRICULTURAL EXPORTS			
(FOB in million US\$)	3,889.30	3,135.75	4,097.59
VALUE OF TOP EXPORTS (FOB in million US \$)			
Coconut Oil	1,039.61	594.49	1,265.93
Tuna	388.78	334.82	359.40
Banana, Fresh	405.56	344.43	319.30
Pineapple & Products	255.51	263.27	239.56
Tobacco Manufactured	125.26	109.36	161.16
Seaweeds & Carageenan	122.03	98.68	154.24
Desiccated Coconut	240.36	145.76	152.61
Milk and Cream & Products	162.50	95.62	138.15
Fertilizer Manufactured	55.81	92.50	120.32
Unmanufactured Tobacco	63.03	96.85	105.61
Mango, Fresh	19.58	23.28	15.19

Source: NSO

Table 7.2 Top Agricultural Exports: Volume and Value, by Major Country of Destination, Philippines, 2010P

COMMODITY/ COUNTRY OF DESTINATION	VOLUME	VALUE	% SHARE (VALUE)
VOLUME AND VALUE ('000 mt, FOB in million US \$)			
COCONUT OIL (crude and refined)	1,348.70	1,265.93	100.00
Netherlands	579.13	545.94	43.13
United States of America	452.15	432.86	34.19
China, People's Republic of	103.74	93.96	7.42
Japan (Excludes Okinawa)	47.01	46.82	3.70
Malaysia (Federation of Malaya)	52.18	40.89	3.23
Others	114.50	105.45	8.33
TUNA	110.49	359.40	100.00
United States of America	24.27	90.07	25.06
Germany	15.42	46.49	12.94
UK Great Britain & N.Ireland	14.05	38.66	10.76
Japan (Excludes Okinawa)	4.12	28.42	7.91
Spain	13.08	27.41	7.63
Others	39.55	128.35	35.71
BANANA, Fresh	1,590.07	319.30	100.00
Japan (Excludes Okinawa)	792.14	167.68	52.51
Iran, Islamic Republic of	219.57	38.74	12.13
China, People's Republic of	165.80	33.10	10.37
Korea, Republic of South	113.28	24.75	7.75
Singapore	96.17	19.21	6.02
Others	203.11	35.82	11.22
PINEAPPLE AND PINEAPPLE PRODUCTS	402.15	239.56	100.00
United States of America	163.74	129.46	54.04
Japan (Excludes Okinawa)	113.02	33.69	14.06
Korea, Republic of South	37.97	14.15	5.91
Netherlands	9.97	10.24	4.27
Canada	6.88	6.39	2.67
Others	70.57	45.63	19.05

Table 7.2 Top Agricultural Exports: Volume...(Continued)

COMMODITY/ COUNTRY OF DESTINATION	VOLUME	VALUE	% SHARE (VALUE)
TOBACCO MANUFACTURED	23.49	161.16	100.00
Thailand	9.99	72.79	45.17
Korea, Republic of South	7.66	54.40	33.75
Singapore	2.59	15.18	9.42
Vietnam	0.71	5.81	3.61
Malaysia (Federation of Malaya)	0.99	5.01	3.11
Others	1.57	7.96	4.94
SEAWEEDS & CARAGEENAN	34.16	154.24	100.00
United States of America	5.90	26.65	17.28
Germany	1.79	14.24	9.23
Belgium	1.64	12.09	7.84
Spain	2.92	11.48	7.44
France	3.22	11.12	7.21
Others	18.69	78.66	51.00
DESSICATED COCONUT	109.17	152.61	100.00
United States of America	28.00	43.47	28.49
Uk Great Britain & N.Ireland	6.64	9.21	6.03
Netherlands	10.74	13.75	9.01
Belgium	9.85	13.17	8.63
Australia	6.79	9.49	6.22
Others	47.15	63.52	41.62
MILK and CREAM & PRODUCT	33.79	138.15	100.00
Malaysia (Federation of Malaya)	10.15	37.99	27.50
Thailand	7.94	34.84	25.22
Indonesia (Includes West Irian)	4.39	19.07	13.81
Bangladesh	3.76	17.46	12.64
Sri Lanka (Ceylon)	1.25	5.40	3.91
Others	6.29	23.38	16.92
FERTILIZER MANUFACTURED	384.53	120.32	100.00
Vietnam	222.88	77.08	64.06
India	105.50	25.51	21.20
Indonesia (Includes West Irian)	38.93	11.10	9.23

Table 7.2 Top Agricultural Exports: Volume...(Continued)

COMMODITY/ COUNTRY OF DESTINATION	VOLUME	VALUE	% SHARE (VALUE)
Thailand	12.90	4.51	3.75
Australia	1.56	0.83	0.69
Others	2.76	1.29	1.07
UNMANUFACTURED			
TOBACCO	33.45	105.61	100.00
Korea, Republic of South	3.81	24.96	23.64
South Africa, Republic of	4.08	14.67	13.89
Belgium	4.15	12.13	11.49
United States of America	5.26	10.63	10.07
Malaysia (Federation of Malaya)	3.56	8.29	7.85
Others	12.60	34.92	33.06

Source: NSO

Table 7.3 Exports of Selected Commodities: Volume and Value, Philippines, 2008-2010

ITEM	2008	2009	2010P
VOLUME OF EXPORTS ('000 mt)			
Abaca	0.11	0.35	0.09
Nata de Coco	5.11	6.05	5.34
Asparagus	0.80	0.30	0.22
Papaws (fresh/dried)	3.58	2.55	1.51
Shallots	6.82	6.58	7.54
Onions (fresh/dried/powdered)	0.06	a/	0.32
Kaong	1.32	1.26	1.05
Manioc (Cassava) & Tapioca	0.89	1.04	3.92
Coconut (Young)	1.66	1.61	2.45
Yam (fresh/dried/powdered)	0.34	0.37	0.41
Garlic	0.03	a/	0.07
VALUE OF EXPORTS (FOB in million US \$)			
Abaca	22.16	10.24	13.41
Nata de Coco	5.45	6.03	5.89
Asparagus	2.66	0.65	0.53
Papaws (fresh/dried)	5.65	3.17	2.25
Shallots	1.69	2.43	2.88
Onions (fresh/dried/powdered)	0.15	a/	0.11
Kaong	2.42	2.29	1.92
Manioc (Cassava) & Tapioca	1.25	1.32	2.15
Coconut (Young)	0.46	0.35	0.63
Yam (fresh/dried/powdered)	0.63	0.65	0.70
Garlic	0.06	0.03	0.27

a/ less than 0.01

Source: NSO

Table 7.4 Top Agricultural Imports: Volume and Value, Philippines, 2008-2010

ITEM	2008	2009	2010P
VOLUME OF TOP IMPORTS ('000 mt)			
Rice	2,432.85	1,755.18	2,379.11
Milk and Cream & Products	234.26	256.64	288.85
Wheat (Including Spelt) and Meslin	1,703.46	3,028.18	1,870.83
Soyabean Oil/Cake Meal	1,203.16	1,267.63	1,043.12
Fertilizer Manufactured	826.20	625.63	825.46
Meat Of Bovine Animals	109.25	84.02	94.02
Urea	524.59	626.64	528.87
Tobacco Unmanufactured	60.73	46.77	37.61
Coffee	36.03	51.09	71.59
Cocoa	32.72	32.33	34.71
VALUE OF TOTAL AGRICULTURAL IMPORTS			
(CIF in million US \$)	7,684.74	6,079.80	7,331.18
VALUE OF TOP IMPORTS (CIF in million US \$)			
Rice	1,956.78	1,039.64	1,652.62
Milk and Cream & Products	618.43	385.68	592.11
Wheat (Including Spelt) and Meslin	724.37	816.45	518.66
Soyabean Oil/Cake Meal	506.58	422.16	402.12
Fertilizer Manufactured	402.00	168.88	266.67
Meat Of Bovine Animals	199.87	143.83	190.79
Urea	223.46	185.93	166.24
Tobacco Unmanufactured	209.17	192.53	120.96
Coffee	91.09	88.13	116.86
Cocoa	50.00	58.94	91.59

Source: NSO

Table 7.5 Other Major Agricultural Imports: Volume and Value, Philippines, 2008-2010

ITEM	2008	2009	2010P
VOLUME OF IMPORTS ('000 mt)			
LIVESTOCK & POULTRY			
Live Bovine (million head)	0.02	0.01	a/
Meat of Bovine, frozen	113.28	84.02	94.02
Live Chicken (million head)	0.00	0.01	a/
Chicken Meat, frozen	43.01	61.41	97.93
VEGETABLES			
Garlic	56.78	38.28	26.11
Onion	67.10	10.81	12.07
Cauliflower and Headed broccoli	0.09	0.14	0.24
Potatoes	16.45	20.20	9.51
VALUE OF IMPORTS (CIF in million US \$)			
LIVESTOCK & POULTRY			
Live Bovine	31.42	6.15	0.97
Meat of Bovine, frozen	202.60	143.83	190.79
Live Chicken	0.41	0.85	0.34
Chicken Meat, frozen	27.18	41.41	67.90
VEGETABLES			
Garlic	11.24	7.08	6.23
Onion	9.77	3.30	4.67
Cauliflower and Headed Broccoli	0.05	0.07	0.17
Potatoes	6.23	6.44	3.60

a/ less than 0.01

Source: NSO

Table 7.6 Top Agricultural Imports: Volume and Value by Major Country of Origin, Philippines, 2010P

COMMODITY/ COUNTRY OF ORIGIN	VOLUME	VALUE	% SHARE (VALUE)
VOLUME AND VALUE ('000 mt, CIF in million US \$)			
RICE	2,379.11	1,652.62	100.00
Vietnam	1,770.63	1,216.27	73.60
Thailand	443.78	311.48	18.85
Pakistan	149.80	108.94	6.59
United States of America	10.64	6.79	0.41
India	1.71	5.10	0.31
Others	2.55	4.05	0.24
MILK and CREAM & PRODUCTS	288.85	592.11	100.00
New Zealand (Excludes West Samoa)	105.45	247.79	41.85
United States of America	61.39	143.83	24.29
Australia	26.22	60.02	10.14
France	10.05	26.20	4.43
Netherlands	7.65	16.92	2.86
Others	78.08	97.33	16.44
WHEAT (Including Spelt) & MESLIN	1,870.83	518.66	100.00
United States of America	900.50	281.82	54.34
Canada	250.64	76.14	14.68
Romania	196.76	40.51	7.81
Brazil	157.44	32.61	6.29
Russian Federations	105.59	26.06	5.03
Others	259.90	61.51	11.86
SOYABEAN OIL/CAKE MEAL	1,043.12	402.12	100.00
United States of America	484.13	202.10	50.26
Argentina	520.32	184.40	45.86
India	30.21	13.40	3.33
Romania	4.68	0.95	0.24
Taiwan (Republic of China)	0.64	0.43	0.11
Others	3.15	0.84	0.21
FERTILIZER MANUFACTURED	825.46	266.67	100.00
China, People's Republic of	261.32	83.70	31.39

Table 7.6 Top Agricultural Imports: Volume...(Continued)

COMMODITY/ COUNTRY OF ORIGIN	VOLUME	VALUE	% SHARE (VALUE)
Japan (Excludes Okinawa)	205.74	48.28	18.10
Canada	56.20	22.08	8.28
Korea, Republic of South	77.67	21.71	8.14
Israel	51.07	21.27	7.97
Others	173.47	69.64	26.12
MEAT OF BOVINE ANIMALS	94.02	190.79	100.00
India	49.00	106.65	55.90
Australia	18.51	43.68	22.89
Brazil	11.64	18.85	9.88
New Zealand (Excludes West Samoa)	8.25	12.13	6.36
United States of America	4.67	7.05	3.70
Others	1.95	2.42	1.27
UREA	528.87	166.24	100.00
China, People's Republic of	232.10	70.46	42.39
Indonesia (Includes West Irian)	101.54	35.70	21.47
Malaysia (Federation of Malaya)	80.33	24.89	14.97
Qatar	65.10	20.75	12.48
Saudi Arabia	22.00	6.72	4.04
Others	27.80	7.71	4.64
TOBACCO UNMANUFACTURED	37.61	120.96	100.00
Vietnam	12.07	21.69	17.93
Brazil	4.50	20.79	17.19
India	3.05	13.25	10.95
Switzerland	2.41	10.72	8.87
Mozambique	1.44	7.55	6.24
Others	14.13	46.96	38.82
COFFEE	71.59	116.86	100.00
Indonesia (Includes West Irian)	39.48	44.25	37.87
Vietnam	20.70	32.55	27.86
Malaysia (Federation of Malaya)	3.89	21.50	18.40
Thailand	3.63	7.73	6.62
Singapore	2.65	6.80	5.82
Others	1.23	4.03	3.45

Table 7.6 Top Agricultural Imports: Volume...(Continued)

COMMODITY/ COUNTRY OF ORIGIN	VOLUME	VALUE	% SHARE (VALUE)
COCOA	34.71	91.59	100.00
Indonesia (Includes West Irian)	11.83	34.58	37.75
Malaysia (Federation of Malaya)	8.18	17.73	19.36
Singapore	3.80	8.71	9.51
United States of America	2.21	6.94	7.58
China, People's Republic of	2.06	4.70	5.14
Others	6.62	18.93	20.66

Source: NSO

Table 7.7 Agricultural Trade Balances of the Philippines with its Major Trading Partners, 2008-2010

ITEM	2008	2009	2010P
	(Export in FOB M US \$; Import in CIF M US \$)		
PHILIPPINES			
Agricultural Exports	3,889.30	3,135.75	4,097.59
Agricultural Imports	7,684.74	6,079.80	7,331.18
Trade Balance	(3,795.44)	(2,944.05)	(3,233.59)
AUSTRALIA			
Agricultural Exports	42.00	31.09	35.65
Agricultural Imports	278.80	261.73	260.84
Trade Balance	(236.80)	(230.64)	(225.20)
JAPAN			
Agricultural Exports	527.49	452.86	431.93
Agricultural Imports	176.34	96.38	116.40
Trade Balance	351.15	356.47	315.53
USA			
Agricultural Exports	971.68	777.53	959.54
Agricultural Imports	1,402.16	1,069.04	1,115.82
Trade Balance	(430.48)	(291.51)	(156.28)
ASEAN			
Agricultural Exports	579.68	486.28	608.75
Agricultural Imports	2,795.98	1,970.84	2,856.37
Trade Balance	(2,216.30)	(1,484.56)	(2,247.62)
EUROPEAN UNION			
Agricultural Exports	859.63	606.63	1,016.28
Agricultural Imports	518.37	486.93	585.21
Trade Balance	341.26	119.69	431.07
Rest of the World			
Agricultural Exports	908.82	781.36	1,045.44
Agricultural Imports	2,513.09	2,194.87	2,396.54
Trade Balance	(1,604.27)	(1,413.51)	(1,351.10)



**SUPPLY AND
UTILIZATION
ACCOUNTS**

Table 8.1 Rice: Supply and Utilization Accounts, Philippines, 2008-2010

ITEM	2008	2009	2010P
		(⁰⁰⁰ mt)	
Gross Supply	15,601	15,027	15,322
Beginning Stocks	2,172	2,639	2,629
Production	10,997	10,633	10,315
Imports	2,432	1,755	2,378
Utilization			
Exports	1	a/	a/
Seeds	219	222	214
Feeds & Waste	715	691	670
Processing	440	425	413
Net Food Disposable	11,587	11,060	10,601
Per Capita NFD			
kilograms/year	128.10	119.92	112.76
grams/day	350.96	328.55	308.93
Ending Stock	2,639	2,629	3,424

a/ Less than 1 thousand metric ton

Table 8.2 Corn: Supply and Utilization Accounts, Philippines, 2008-2010

ITEM	2008	2009	2010P
		(⁰⁰⁰ mt)	
Gross Supply	7,124	7,535	6,719
Beginning Stocks	173	198	254
Production	6,928	7,034	6,377
Imports	23	303	88
Utilization			
Exports	2	1	a/
Seeds	53	54	50
Feeds & Waste	4,503	4,572	4,145
Processing	924	938	851
Net Food Disposable	1,444	1,716	1,520
Per Capita NFD			
kilograms/year	15.96	18.61	16.17
grams/day	43.73	50.99	44.30
Ending Stock	198	254	153

a/ Less than 1 thousand metric ton

Table 8.3 Papaya: Supply and Utilization Accounts, Philippines, 2008-2010

ITEM	2008	2009	2010P
		(mt)	
Gross Supply	182,907	176,656	165,981
Production	182,907	176,656	165,981
Imports	-	-	-
Utilization			
Exports	2,878	2,305	1,391
Feeds & Waste	10,802	10,461	9,875
Processing	-	-	-
Net Food Disposable	169,227	163,890	154,715
Per Capita NFD			
kilograms/year	1.87	1.78	1.65
grams/day	5.12	4.88	4.52

Table 8.4 Cabbage: Supply and Utilization Accounts, Philippines, 2008-2010

ITEM	2008	2009	2010P
		(mt)	
Gross Supply	128,865	124,712	128,964
Production	128,865	124,712	128,964
Imports	-	-	-
Utilization			
Exports	-	-	-
Seeds	32	31	32
Feeds & Waste	10,309	9,977	10,317
Processing	-	-	-
Net Food Disposable	118,524	114,704	118,615
Per Capita NFD			
kilograms/year	1.31	1.24	1.26
grams/day	3.59	3.40	3.45

Table 8.5 Tomato: Supply and Utilization Accounts, Philippines, 2008-2010

ITEM	2008	2009	2010P
		(mt)	
Gross Supply	195,810	198,948	204,272
Production	195,810	198,948	204,272
Imports	b/	b/	-
Utilization			
Exports	-	-	-
Seeds	69	69	69
Feeds & Waste	13,707	13,926	14,299
Processing	29,372	29,842	30,641
Net Food Disposable	152,662	155,111	159,263
Per Capita NFD			
kilograms/year	1.69	1.68	1.69
grams/day	4.63	4.60	4.63

b/ Less than 1 metric ton

Table 8.6 Mongo: Supply and Utilization Accounts, Philippines, 2008-2010

ITEM	2008	2009	2010P
		(mt)	
Gross Supply	65,429	58,260	57,869
Production	29,617	27,694	27,055
Imports	35,812	30,566	30,814
Utilization			
Exports	12	15	422
Seeds	180	174	180
Feeds & Waste	327	291	287
Processing	-	-	-
Net Food Disposable	64,910	57,780	56,980
Per Capita NFD			
kilograms/year	0.72	0.63	0.61
grams/day	1.97	1.73	1.67

Table 8.7 Chicken (dressed): Supply and Utilization Accounts, Philippines, 2008-2010

ITEM	2008	2009	2010P
		(mt)	
Gross Supply	856,082	887,738	965,027
Production	812,324	826,294	867,023
Imports	43,758	61,444	98,004
Utilization			
Exports	3,267	4,548	5,505
Net Food Disposable	852,815	883,190	959,522
Per Capita NFD			
kilograms/year	9.43	9.58	10.21
grams/day	25.84	26.25	27.97

Table 8.8 Beef: Supply and Utilization Accounts, Philippines, 2008-2010

ITEM	2008	2009	2010P
		(mt)	
Gross Supply	234,200	231,021	244,811
Production	184,363	189,480	194,749
Imports	49,837	41,541	50,062
Utilization			
Exports	b/	-	1
Processing	18,436	18,948	19,475
Carcass			
Net Food Disposable	187,388	183,640	194,555
Per Capita NFD			
kilograms/year	2.07	1.99	2.07
grams/day	5.67	5.45	5.67
Offals			
Net Food Disposable	28,375	28,433	30,780
Per Capita NFD			
kilograms/year	0.31	0.31	0.33
grams/day	0.85	0.85	0.90

b/ Less than 1 metric ton

Table 8.9 Milkfish: Supply and Utilization Accounts, Philippines, 2008-2010

ITEM	2008	2009	2010P
		(mt)	
Gross Supply	354,558	357,051	357,919
Production	354,551	357,025	357,919
Imports	7	26	-
Utilization			
Exports	1,678	5,510	5,741
Feeds & Waste	10,637	10,711	10,738
Processing	113,456	114,248	114,534
Net Food Disposable	228,787	226,582	226,906
Per Capita NFD			
kilograms/year	2.53	2.46	2.41
grams/day	6.93	6.74	6.60

Table 8.10 Tilapia: Supply and Utilization Accounts, Philippines, 2008-2010

ITEM	2008	2009	2010P
		(mt)	
Gross Supply	299,833	304,378	303,235
Production	299,813	304,374	303,235
Imports	20	4	-
Utilization			
Exports	300	6	-
Feeds & Waste	8,994	9,131	9,097
Net Food Disposable	290,539	295,241	294,138
Per Capita NFD			
kilograms/year	3.21	3.20	3.13
grams/day	8.79	8.77	8.58

**TASK FORCE ON
Updating and Revision of
SELECTED STATISTICS ON AGRICULTURE 2011**

RODRIGO N. LABUGUEN

Chair

JING B. JALISAN

Co-Chair

Focal Persons

MARIA CAROL G. DURAN	- AASID
ELIZABETH B. CABRERA	- LPSD
REINELDA P. ADRIANO	- FSD
MICHELLE D. GUSTILO	- CSD
MAYDALYN G. EUSTAQUIO	- AMSAD

Publishing Staff

QUIRINO G. SANTOS, JR.

Layout/Graphic Designer

ROBERTO E. LANDICHO

Duplicating Machine Operator

SUSAN B. GIPAL

Circulation

Advisers

ROMEO S. RECIDÉ

Director

MAURA S. LIZARONDO

Assistant Director