



SPECIAL RELEASE

CONSTRUCTION MATERIALS WHOLESALE PRICE INDEX (CMWPI) IN THE NATIONAL CAPITAL REGION (NCR) (2012=100)

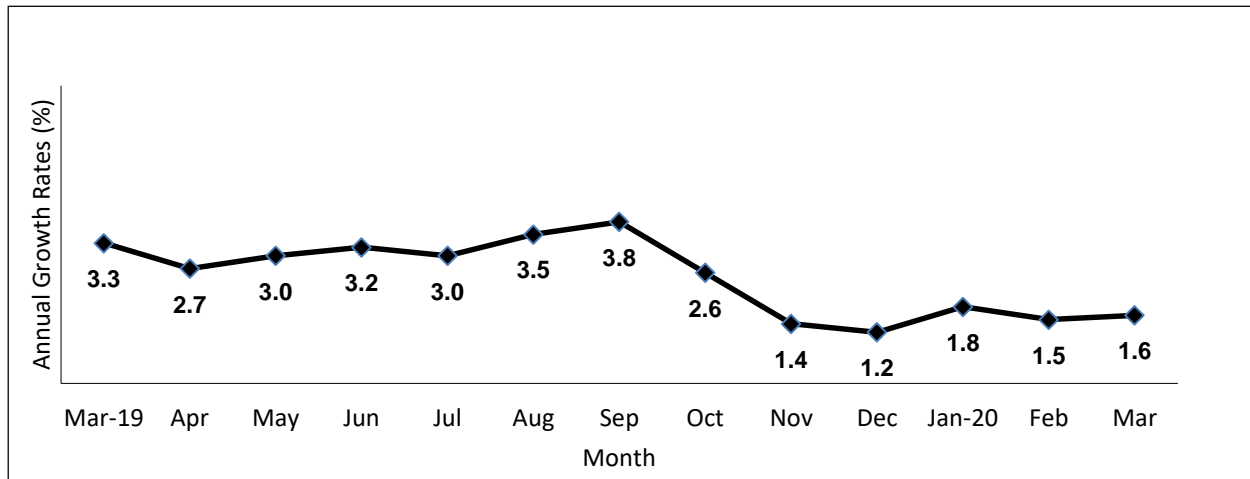
MARCH 2020

Date of Release: 20 April 2020
Reference No. 2020- 142

**Table A. Year-on-Year Changes of CMWPI, in Percent
(2012=100)**

March 2020	February 2020	March 2019	Year-to-Date
1.6	1.5	3.3	1.7

**Figure 1. Annual Growth Rates of CMWPI for All Items, in Percent
March 2019 – March 2020
(2012=100)**



Higher annual increment of CMWPI in NCR is noted during the month

The year-on-year change of CMWPI in NCR picked up by 1.6 percent in March 2020. In the previous month, the annual rate was posted at 1.5 percent and in March 2019, 3.3 percent. (Table A and Table 2)



Relative to their previous month's annual rates, annual increases during the month were higher in the indices of concrete products and cement at 1.3 percent; and reinforcing and structural steel, 0.3 percent. Moreover, the annual change in the index of doors, jambs, and steel casement rose by 0.6 percent from a 0.7 percent annual decline in the previous month. On the other hand, slower annual gains were recorded in the following commodity groups during the month:

- Sand and gravel, 1.4 percent;
- Hardware, 4.7 percent;
- Lumber, 3.3 percent
- G.I. sheet, 2.8 percent;
- Electrical works, and Plumbing fixtures and accessories/waterworks, both at 1.4 percent; and
- Painting works, 0.9 percent.

The indices of plywood, and fuels and lubricants went down further by 0.4 percent and 5.7 percent, respectively. The rest of the commodity groups either retained their previous month's annual growth rates or had zero annual growth during the month. (Table 2)



ROSALINDA P. BAUTISTA

Assistant Secretary

Deputy National Statistician

Sectoral Statistics Office