



SPECIAL RELEASE

Construction Materials Retail Price Index (CMRPI) in the National Capital Region (NCR) (2012=100)

December 2020

Date of Release: 19 January 2021

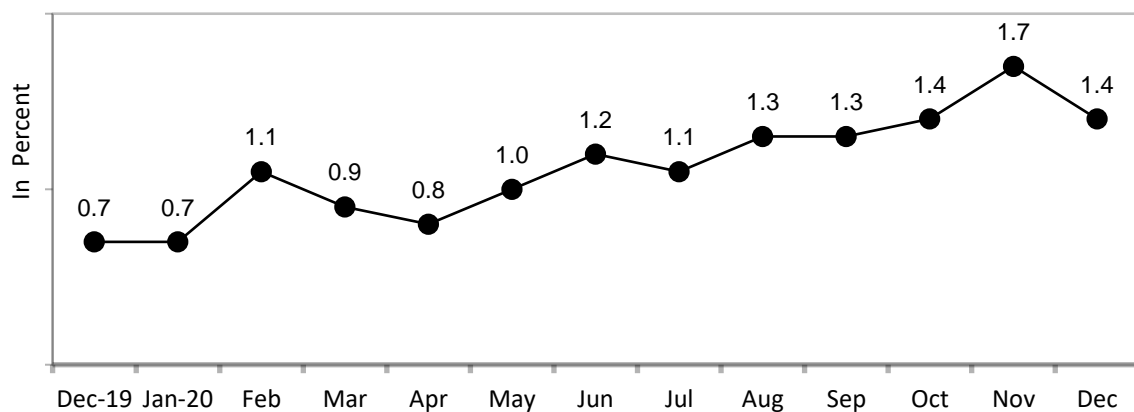
Reference No. 2021-037

**Table A. Year-on-Year Growth Rates of the CMRPI in NCR, All Items
In Percent
(2012=100)**

December 2020	November 2020	December 2019	Year-to-Date
1.4	1.7	0.7	1.2

Source: Philippine Statistics Authority

**Figure 1. Growth Rates of the CMRPI in NCR, All Items
December 2019 – December 2020
(2012=100)**



Source: Philippine Statistics Authority

Annual increment of CMRPI in NCR decelerates in December 2020

The annual growth of CMRPI in NCR slowed down to 1.4 percent in December 2020. Its annual rate in November 2020 was registered at 1.7 percent and in December 2019, 0.7 percent. (Table A and Table 2)

Slower annual increases were recorded in the indices of the following commodity groups:

- Masonry materials, 1.0 percent;
- Painting materials and related compounds, 1.5 percent;
- Tinsmithry materials, 2.8 percent; and
- Miscellaneous construction materials, 1.0 percent.

Meanwhile, the index of plumbing materials exhibited a higher annual uptick of 0.7 percent during the month. The indices of carpentry materials and electrical materials retained their previous month's annual growth rates of 1.4 percent and 0.8 percent, respectively. (Table 2)

The annual average rate of CMRPI eased to 1.2 percent in 2020, from 1.4 percent in 2019.

Lower annual average rates in 2020 were posted in the indices of the following commodity groups:

- Carpentry materials and masonry materials, both at 1.0 percent;
- Electrical materials, 0.8 percent;
- Tinsmithry materials, 1.7 percent; and
- Miscellaneous construction materials, 0.9 percent.

Relative to their annual average rates in 2019, faster annual average rates in 2020 were, however, noted in the indices of painting materials and related compounds at 1.7 percent, and plumbing materials at 0.7 percent. (Table 2)



DENNIS S. MAPA, Ph.D.

Undersecretary

National Statistician and Civil Registrar General