

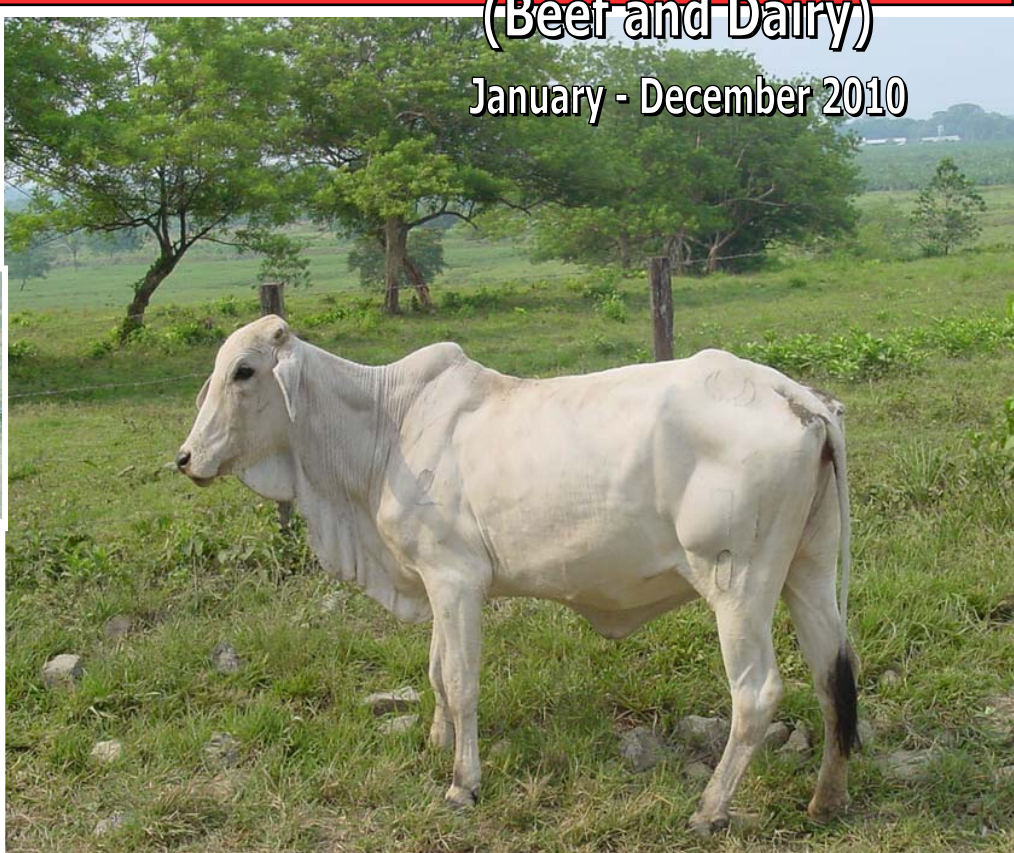


Republic of the Philippines
Department of Agriculture
BUREAU OF AGRICULTURAL STATISTICS
Quezon City

CATTLE INDUSTRY PERFORMANCE REPORT

(Beef and Dairy)

January - December 2010



May 2011



EXPLANATORY NOTES

This annual Industry Performance Report on Cattle presents the industry situation in terms of inventory by farm type and age classification; volume of production; animals on the milk line and milk production; supply and disposition; supply and utilization accounts; and monthly average prices at farmgate, wholesale and retail levels.

The Livestock and Poultry data system of the Bureau of Agricultural Statistics (BAS) is supported by two (2) major surveys namely:

- 1) The Backyard Livestock and Poultry Survey (BLPS) which covers one (1) of the four (4) replicate samples of the Palay and Corn Production Survey (PCPS) consisting of 9,700 sample households in 673 sample barangays nationwide; and
- 2) The Commercial Livestock and Poultry Survey (CLPS) which covers 699 independent farms as of January 2010 updated list. A cattle farm is considered commercial when it has a farm capacity of at least 21 head of adult cattle.

Both surveys for carabao are simultaneously conducted January and July in all provinces.

Another survey that supports the statistical requirements of the livestock and poultry sector is the Survey of Abattoirs and Dressing Plants (SADP)*. This covers around 1,120 accredited and non-accredited abattoirs nationwide. This is undertaken in coordination with the National Meat Inspection Service (NMIS).

*Also known as Survey of Animals Slaughtered in Abattoirs and Dressing Plants

**TABLE OF CONTENTS**

Explanatory Notes	i
Table of Contents	ii
Highlights	iii
Inventory	
By Farm Type and by Age Classification	1
Dairy Cattle by Age	2
Top Producing Regions	2
Production	3
Milk Production	4
Supply and Disposition	5
Supply and Utilization	6
Prices	7
Figures	
1. Cattle Inventory by Farm Type, Philippines, as of January 1, 2010-2011	iii
2. Volume of Production, Philippines, 2009-2010	iii
3. Annual Average Prices by Market Level, Philippines and Metro Manila, 2009-2010	iii
4. Distribution of Inventory by Age Classification, Philippines, as of January 1, 2011	1
5. Monthly Average Farmgate Price, Philippines, 2008-2010	7
6. Monthly Average Wholesale Price, Metro Manila, 2008-2010	7
7. Monthly Average Retail Price of Beef Rump, Metro Manila, 2008-2010	7
Tables	
1. Cattle Inventory by Farm Type and by Age Classification, Philippines, as of January 1, 2009-2011	1
1a. Inventory of Dairy Cattle by Age, as January 1, 2009-2011	2
2. Cattle Inventory of Top Producing Regions, by Farm Type, as of January 1, 2011	2
3. Volume of Production, by Quarter, Philippines, 2008-2010	3
4. Animals on the Milkline and Milk Production by Source, Philippines, 2009-2010	4
5. Supply and Disposition, Philippines, 2008-2010	5
6. Cattle Imports by Classification, Philippines, 2008-2010	5
7. Supply and Utilization Accounts of Beef, Philippines, 2008-2010	6
8. Volume and Value of Beef Imports, by Quarter, Philippines, 2008-2010	6
9. Monthly Average Prices by Market Level, Philippines and Metro Manila, 2008-2010	8
10. Cattle Inventory in Backyard and Commercial Farms, by Region, by Semester, Philippines, 2009-2011	9
11. Volume of Production, by Region, by Quarter, Philippines, 2009-2010	10

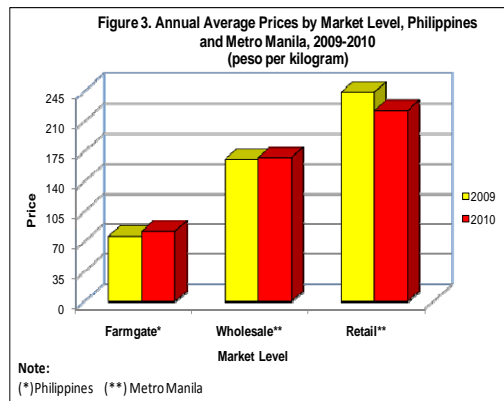
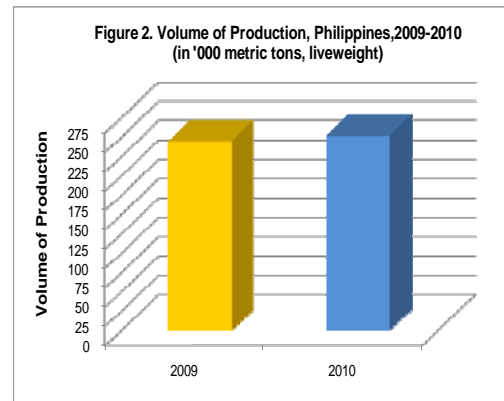
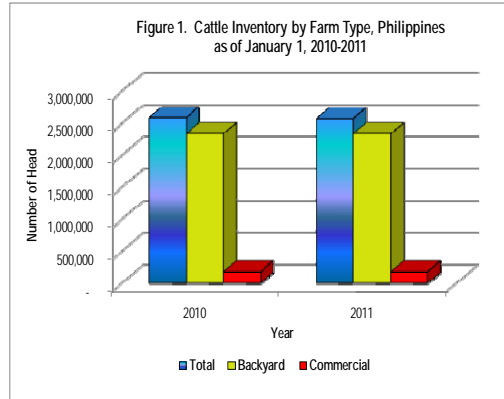


HIGHLIGHTS

- ❖ As of January 1, 2011, the total cattle inventory in the country was 2.52 million head. This was 2.06 percent lower than last year's record of 2.57 million head. Inventory of cattle from backyard farms decreased by 2.69 percent, while inventory from commercial raisers grew by 6.90 percent. Around 93 percent of the total cattle inventory were raised in backyard farms and only 7 percent were raised in commercial farms.

- ❖ In 2010, total cattle production was 251.74 thousand metric tons. It was 2.71 percent higher than the previous year's production of 245.10 thousand metric tons.

- ❖ The annual average farmgate price of live cattle in 2010 was P81.83 per kilogram, 7.35 percent higher than the previous year's price. At the wholesale level, the annual average price was P167.48 per kilogram or 1.24 percent higher than last year's P165.44 per kilogram. The 2010 average retail price at P222.46 per kilogram decreased by 8.89 percent from previous year's P244.18 per kilogram.





I CATTLE INDUSTRY PERFORMANCE REPORT

INVENTORY

Table 1. Cattle Inventory by Farm Type and by Age Classification, Philippines, January 1, 2009-2011 (Number of Head)

ITEM	2009	2010	2011	Percent Change	
				10/09	11/10
TOTAL	2,586,386	2,570,879	2,517,857	(0.60)	(2.06)
BACKYARD	2,421,725	2,403,296	2,338,714	(0.76)	(2.69)
COMMERCIAL	164,661	167,583	179,144	1.77	6.90
COW	1,054,625	1,065,543	1,044,654	1.04	(1.96)
Backyard	987,198	996,389	970,980	0.93	(2.55)
Commercial	67,427	69,154	73,674	2.56	6.54
HEIFER	438,447	438,039	430,985	(0.09)	(1.61)
Backyard	400,118	399,296	389,833	(0.21)	(2.37)
Commercial	38,329	38,743	41,153	1.08	6.22
YEARLING^{1/}	496,623	496,777	484,165	0.03	(2.54)
Backyard	468,602	468,324	453,900	(0.06)	(3.08)
Commercial	28,021	28,453	30,265	1.54	6.37
BULLS	297,085	294,647	288,807	(0.82)	(1.98)
Backyard	283,415	280,923	274,377	(0.88)	(2.33)
Commercial	13,670	13,724	14,429	0.40	5.14
OTHERS^{2/}	299,606	275,873	269,246	(7.92)	(2.40)
Backyard	282,392	258,364	249,624	(8.51)	(3.38)
Commercial	17,214	17,509	19,622	1.71	12.07

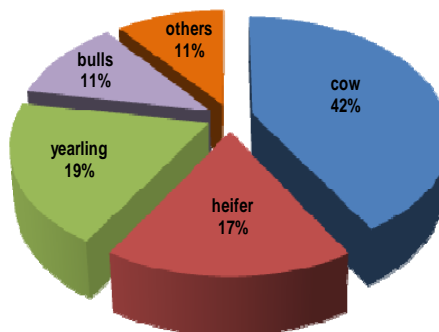
P-Preliminary

^{1/} Male and female 1 year old and below including calves

^{2/} Include castrated male and ready to breed bull

- ❖ As of January 1, 2011, the total cattle inventory was 2,517,857 head, or 2.06 percent lower than last year's inventory.
- ❖ Of the total cattle population, cows accounted for about 42 percent. Yearlings contributed 19 percent, heifers shared 17 percent, bulls and other age classifications accounted for 11 percent.

Figure 4. Distribution of Inventory by Age Classification, Philippines, as of January 1, 2011





**Table 1a. Inventory of Dairy Cattle by Age, as of January 1, 2009 – 2011
(Number of Head)**

ANIMAL TYPE/AGE	2009	2010	2011P	Percent Change	
				09/08	10/09
CATTLE	15,073	16,949	17,405	12.44	2.69
Bull	596	615	643	3.20	4.54
Dam	6,871	7,583	7,951	10.36	4.85
Heifer	1,879	2,231	2,134	18.74	(4.35)
Yearling	2,599	3,041	3,104	17.02	2.06
Calf	3,128	3,478	3,573	11.19	2.73

P-Preliminary Estimates

**Table 2. Cattle Inventory of Top Producing Regions by Farm Type, as of January 1, 2011P
(Number of Head)**

TOTAL (Backyard & Commercial)		BACKYARD		COMMERCIAL	
Region	Inventory	Region	Inventory	Region	Inventory
Ilocos Region	291,442	Ilocos Region	287,559	Bicol Region	31,494
Northern Mindanao	278,426	Central Visayas	270,470	Northern Mindanao	25,776
Central Visayas	273,311	Northern Mindanao	252,650	Cagayan Valley	25,317
CALABARZON	250,927	CALABARZON	243,438	SOCCSKSARGEN	25,063
Western Visayas	243,334	Western Visayas	239,730	Central Luzon	19,742
Sub-Total	1,337,440		1,293,847		127,392
Others	1,180,418		1,044,867		51,752
Philippines	2,517,858		2,338,714		179,144
Percent Share					
Ilocos Region	11.57	Ilocos Region	12.30	Bicol Region	17.58
Northern Mindanao	11.06	Central Visayas	11.56	Northern Mindanao	14.39
Central Visayas	10.85	Northern Mindanao	10.80	Cagayan Valley	14.13
CALABARZON	9.97	CALABARZON	10.41	SOCCSKSARGEN	13.99
Western Visayas	9.66	Western Visayas	10.25	Central Luzon	11.02
Sub-Total	53.12		55.32		71.11
Others	46.88		44.68		28.89
Philippines	100.00		100.00		100.00

P-Preliminary

Inventory of Dairy Cattle

- ❖ As of January 1, 2011, the total inventory of dairy cattle was 17,405 head, or 2.69 percent higher compared with last year's inventory of 16,949 head.
- ❖ Of the total dairy cattle inventory, 46.0 percent were dams, 21.0 percent were calves, and 18.0 percent were yearlings. The rest were heifers and bulls which accounted for 12 percent and 4 percent of the total inventory, respectively.

Top Producing Regions

- ❖ The top five (5) producing regions in terms of total cattle inventory were Ilocos Region, Northern Mindanao, Central Visayas, CALABARZON, and Western Visayas. They contributed 53.12 percent to the total cattle inventory in the country.
- ❖ Ilocos Region had the highest share of 12.30 percent of the total backyard population. Bicol Region, on the other hand, accounted for 17.58 percent of the total commercial cattle population in the country.



PRODUCTION

**Table 3. Volume of Production, by Quarter, Philippines, 2008-2010
(in '000 metric tons, liveweight)**

QUARTER	2008	2009	2010P	Percent Change	
				09/08	10/09
TOTAL	239.16	245.10	251.74	2.49	2.71
Jan-Mar	55.79	55.97	57.91	0.33	3.47
Apr-Jun	59.83	61.82	64.93	3.31	5.04
Jan-Jun	115.62	117.78	122.84	1.87	4.29
Jul-Sep	55.25	56.27	55.60	1.84	(1.20)
Oct-Dec	68.29	71.05	73.31	4.04	3.18
Jul-Dec	123.54	127.32	128.90	3.06	1.25

P-Preliminary

- ❖ In 2010, the total cattle production stood at 251.74 thousand metric tons. It was 2.71 percent higher than the previous year's production of 245.10 thousand metric tons.
- ❖ Cattle production increased in all quarters of 2010 except in the 3rd quarter.
- ❖ In 2010, the highest increment of 5.04 percent in cattle production was observed in the 2nd quarter while the lowest was in the 3rd quarter.



MILK PRODUCTION

**Table 4. Animals on the Milkline and Milk Production by Source
Philippines, 2009-2010**

ANIMAL TYPE/SOURCE	2009		2010		Percent Change 10/09	
	Animals on the milkline	Production (LME* in '000 liters)	Animals on the milkline	Production (LME* in '000 liters)	Animals on the milkline	Production (LME* in '000 liters)
CATTLE	4,268	8,645.20	4,425	9,842.64	3.68	13.85
Individual	1,180	1,622.06	1,343	2,292.85	13.81	41.35
Cooperative	2,452	5,492.30	2,394	5,919.45	(2.37)	7.78
Commercial	347	1,046.66	362	1,080.24	4.32	3.21
Institutional	289	484.18	326	550.10	12.80	13.61

Source: National Dairy Authority (NDA)

*LME- refers to Liquid Milk Equivalent (for cattle 1 liter of fresh milk= 0.98 liter LME)

- ❖ In 2010, the total number of cattle on the milkline was 4,425 head, 3.68 percent higher than the previous year's level of 4,268 head.
- ❖ The 2010 production of cow's milk was 9.84 million liters. It grew by 13.85 percent compared with last year's output of 8.65 million liters.
- ❖ In 2010, 60 percent of the total cows' milk came from the dairy cooperatives. There was an increase of 7.78 percent from 2009 record.



SUPPLY AND DISPOSITION

Table 5. Supply and Disposition, Philippines, 2008-2010

(Number of live animals)

ITEM	2008	2009	2010P	Percent Change	
				09/08	10/09
TOTAL SUPPLY	3,419,845	3,444,972	3,403,202	0.73	(1.21)
Beginning Inventory	2,566,492	2,586,386	2,570,879	0.78	(0.60)
Born Alive	843,652	837,750	798,322	(0.70)	(4.71)
Imports*	9,701	14,989	16,066	54.51	7.19
DISPOSITION	833,459	874,093	885,344	4.88	1.29
Slaughtered	786,398	808,190	830,700	2.77	2.79
Death/Losses	17,826	18,038	18,735	1.19	3.86
ENDING INVENTORY	2,586,386	2,570,879	2,517,858	(0.60)	(2.06)

P-Preliminary Estimates

* Source : Bureau of Animal Industry

- ❖ The total supply of cattle in 2010 was 3.40 million head, or 1.21 percent lower than the previous year's record. The reduction in the supply of cattle was traced by the decrease in the beginning stocks and in the number of live births which were down by 0.60 percent and 4.71 percent, respectively.
- ❖ In 2010, total disposition of cattle was 885.34 thousand head, up by 1.29 percent compared with last year's record. The number of cattle slaughtered for meat in 2010 increased by 2.79 percent against last year's record.

**Table 6. Cattle Imports by Classification,
Philippines, 2008-2010
(Number of Head)**

ITEM	2008	2009	2010	Percent Change	
				09/08	09/09
Breeder	484	1,399	910	189.05	(34.95)
Feeder	9,217	13,590	15,156	47.44	11.52
Total	9,701	14,989	16,066	54.51	7.19

Source : Bureau of Animal Industry

Cattle Imports

- ❖ The number of imported live cattle in 2010 was recorded at 16,066 head. This was 7.19 percent higher than the 2009 importation. More than 94 percent of the total importation were feeder cattle and the rest were breeders.



SUPPLY AND UTILIZATION

Table 7. Supply and Utilization Accounts of Beef, Philippines, 2008-2010
(in metric tons)

ITEM	2008	2009	2010P	Percent Change	
				09/08	10/09
SUPPLY	234,200	231,021	244,811	(1.36)	5.97
Production	184,363	189,480	194,749	2.78	2.78
Imports ^{1/}	49,837	41,541	50,062	(16.65)	20.51
UTILIZATION	234,199	231,021	244,810	(1.36)	5.97
Exports	a/	-	1	-	#DIV/0!
Processing	18,436	18,948	19,475	2.78	2.78
Net Food Disposable	215,763	212,073	225,335	(1.71)	6.25
Carcass	187,388	183,640	194,555	(2.00)	5.94
Per Cap (Kg/Yr)	2.07	1.99	2.07	(3.86)	4.02
Offals	28,375	28,433	30,780	0.20	8.25
Per Cap (Kg/Yr)	0.31	0.31	0.33	0.00	6.45

P-Preliminary Estimates

Source: BAS-Agricultural Accounts & Statistical Indicators Division

a/ Less than 1 metric ton

^{1/} Source: National Statistics Office

- ❖ In 2010, the total beef supply increased by 5.97 percent from last year's volume of 231,021 metric tons.
- ❖ The total utilization of beef in 2010 also increased by 5.97 percent from last year's record of 231,021 metric tons.
- ❖ The estimated net disposable in 2010 was 225,335 metric tons, or 6.25 percent higher than last year's record.
- ❖ This year, the estimated per capita consumption of carcass meat and offals were 2.07 kilograms and 0.33 kilogram, respectively.

Table 8. Volume and Value of Beef Imports, by Quarter, Philippines, 2008-2010

ITEM	2008	2009	2010	Percent Change	
				09/08	10/09
Volume (m.t.)	49,836.65	41,541.59	50,061.97	(16.64)	20.51
Jan-Mar	12,535.69	8,958.44	11,999.31	(28.54)	33.94
Apr-Jun	13,369.21	8,156.62	12,525.52	(38.99)	53.56
Jul-Sep	12,640.36	12,512.61	13,885.96	(1.01)	10.98
Oct-Dec	11,291.39	11,913.92	11,651.17	5.51	(2.21)
Value (FOB '000 US\$)	68,506.98	52,602.68	81,870.91	(23.22)	55.64
Jan-Mar	14,369.40	11,312.56	13,518.01	(21.27)	19.50
Apr-Jun	15,724.50	9,026.40	16,664.88	(42.60)	84.62
Jul-Sep	20,330.35	16,215.25	26,571.08	(20.24)	63.86
Oct-Dec	18,082.73	16,048.47	25,116.94	(11.25)	56.51

Source: BAS-AMSAD based on basic data from NSO

Beef Imports

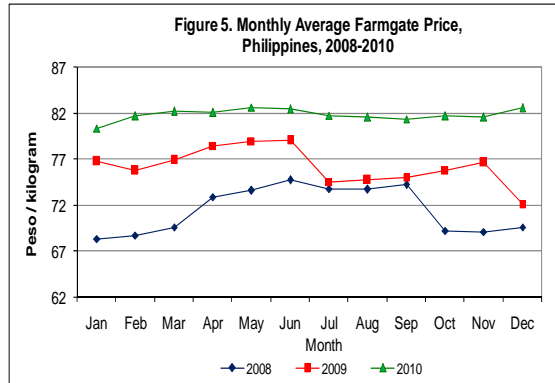
- ❖ The volume of beef imports in 2010 was 50.06 thousand metric tons. The value of imports was US\$ 81.87 million FOB. Compared with last year's levels, the volume and value of imports increased by 20.51 percent and 55.64 percent, respectively.
- ❖ The largest volume of imports was registered during the 3rd quarter of 2010.



PRICES

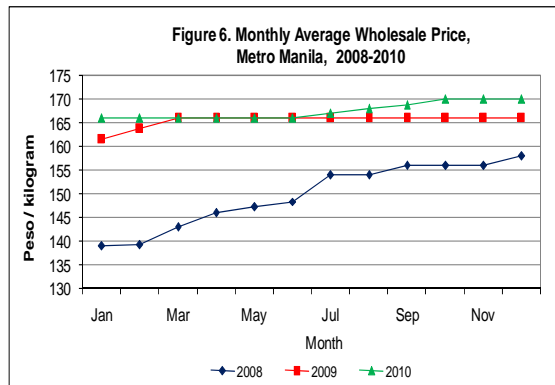
Farmgate Price

- ❖ The annual average farmgate price of live cattle in 2010 was P81.83 per kilogram. It increased by 7.35 percent from last year's annual average price of P76.23 per kilogram.



Wholesale Price

- ❖ In 2010, the annual average wholesale price of beef per kilogram (Carcass weight) in Metro Manila was P167.48. This was 1.24 percent higher than last year's price of P165.44 per kilogram.



Retail Price

- ❖ The annual average retail price of beef rump in 2010 was P222.46 per kilogram. This was 8.89 percent lower than last year's average price of P244.18 per kilogram.

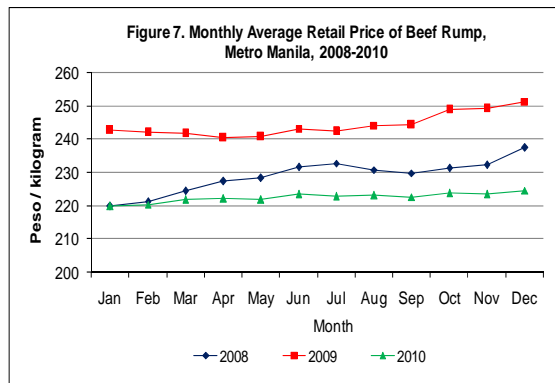




Table 9. Monthly Average Prices by Market Level, Philippines and Metro Manila, 2008-2010

MONTH	Farmgate Price (P/KG) *				
	Philippines				
	2008	2009	2010	Percent Change	
09/08				10/09	
January	68.35	76.78	80.35	12.33	4.65
February	68.73	75.75	81.70	10.21	7.85
March	69.60	76.91	82.23	10.50	6.92
April	72.89	78.46	82.03	7.64	4.55
May	73.60	78.97	82.63	7.30	4.63
June	74.73	79.03	82.41	5.75	4.28
July	73.78	74.54	81.77	1.03	9.70
August	73.74	74.71	81.60	1.32	9.22
September	74.26	75.04	81.38	1.05	8.45
October	69.22	75.79	81.70	9.49	7.80
November	69.10	76.62	81.54	10.88	6.42
December	69.61	72.15	82.60	3.65	14.48
Annual Ave.	71.47	76.23	81.83	6.66	7.35
MONTH	Wholesale Price (P/KG.) *				
	Metro Manila				
	2008	2009	2010	Percent Change	
09/08				10/09	
January	139.00	161.50	166.00	16.19	2.79
February	139.24	163.75	166.00	17.60	1.37
March	143.00	166.00	166.00	16.08	0.00
April	145.95	166.00	166.00	13.74	0.00
May	147.20	166.00	166.00	12.77	0.00
June	148.40	166.00	166.00	11.86	0.00
July	154.00	166.00	167.00	7.79	0.60
August	154.00	166.00	168.00	7.79	1.20
September	156.00	166.00	168.80	6.41	1.69
October	156.00	166.00	170.00	6.41	2.41
November	156.00	166.00	170.00	6.41	2.41
December	158.00	166.00	170.00	5.06	2.41
Annual Ave.	149.73	165.44	167.48	10.49	1.24
MONTH	Retail Price (Beef Rump, P/Kg.) *				
	Metro Manila				
	2008	2009	2010	Percent Change	
09/08				10/09	
January	219.75	242.58	219.76	10.39	(9.41)
February	221.06	242.07	220.33	9.50	(8.98)
March	224.44	241.54	221.75	7.62	(8.19)
April	227.29	240.26	222.19	5.71	(7.52)
May	228.31	240.72	221.85	5.44	(7.84)
June	231.58	243.14	223.34	4.99	(8.14)
July	232.67	242.28	222.78	4.13	(8.05)
August	230.75	244.06	223.15	5.77	(8.57)
September	229.75	244.17	222.65	6.28	(8.81)
October	231.18	248.87	223.76	7.65	(10.09)
November	232.14	249.14	223.44	7.32	(10.32)
December	237.35	251.28	224.56	5.87	(10.63)
Annual Ave.	228.86	244.18	222.46	6.69	(8.89)

* Pesos per kilogram liveweight

Source: BAS-AMSAD



Table 10. Cattle Inventory in Backyard and Commercial Farms, by Region, by Semester, Philippines, 2009-2011 (Number of Head)

	2009		2010		2011
	Jan 1	July 1	Jan 1	July 1	Jan 1P
TOTAL					
PHILIPPINES	2,586,386	2,600,363	2,570,879	2,546,919	2,517,858
CAR	53,469	55,388	53,483	64,076	61,567
Ilocos Region	347,950	344,056	317,073	303,757	291,442
Cagayan Valley	192,404	197,463	197,541	191,211	187,710
Central Luzon	172,243	174,955	173,144	171,775	171,313
CALABARZON	254,749	256,376	255,253	251,365	250,927
MIMAROPA	94,488	91,611	87,144	91,996	90,267
Bicol Region	69,200	70,776	68,759	73,012	73,468
Western Visayas	212,634	217,179	225,383	240,490	243,334
Central Visayas	269,306	271,754	275,207	271,078	273,311
Eastern Visayas	17,799	16,670	15,349	14,641	14,671
Zamboanga Peninsula	160,970	151,934	155,994	142,996	140,079
Northern Mindanao	277,784	285,520	281,442	279,480	278,426
Davao Region	138,179	138,205	140,144	136,330	138,175
SOCCSKSARGEN	199,045	200,310	203,105	198,485	194,727
Caraga	16,522	17,562	18,097	19,113	19,208
ARMM	109,644	110,604	103,761	97,114	89,233
BACKYARD					
PHILIPPINES	2,421,725	2,433,399	2,403,296	2,370,903	2,338,714
CAR	45,673	47,593	45,778	52,275	49,932
Ilocos Region	343,972	340,164	313,269	299,430	287,559
Cagayan Valley	179,448	180,577	180,111	171,994	162,393
Central Luzon	149,909	155,048	153,260	152,111	151,571
CALABARZON	249,842	251,029	249,864	243,950	243,438
MIMAROPA	84,421	81,688	77,273	80,549	78,762
Bicol Region	42,568	43,329	42,110	42,360	41,974
Western Visayas	210,965	215,575	221,318	236,860	239,730
Central Visayas	267,054	269,709	273,439	268,492	270,470
Eastern Visayas	12,929	12,247	11,302	11,453	12,249
Zamboanga Peninsula	160,577	151,569	155,633	142,245	139,393
Northern Mindanao	248,628	255,818	252,360	255,575	252,650
Davao Region	132,154	132,279	134,601	130,455	132,858
SOCCSKSARGEN	169,113	170,327	172,832	169,321	169,664
Caraga	15,875	16,890	17,421	17,904	18,020
ARMM	108,597	109,557	102,725	95,929	88,051
COMMERCIAL					
PHILIPPINES	164,661	166,964	167,583	176,016	179,144
CAR	7,796	7,795	7,705	11,801	11,635
Ilocos Region	3,978	3,892	3,804	4,327	3,883
Cagayan Valley	12,956	16,886	17,430	19,217	25,317
Central Luzon	22,334	19,907	19,884	19,664	19,742
CALABARZON	4,907	5,347	5,389	7,415	7,489
MIMAROPA	10,067	9,923	9,871	11,447	11,505
Bicol Region	26,632	27,447	26,649	30,652	31,494
Western Visayas	1,669	1,604	4,065	3,630	3,604
Central Visayas	2,252	2,045	1,768	2,586	2,841
Eastern Visayas	4,870	4,423	4,047	3,188	2,422
Zamboanga Peninsula	393	365	361	751	686
Northern Mindanao	29,156	29,702	29,082	23,905	25,776
Davao Region	6,025	5,926	5,543	5,875	5,317
SOCCSKSARGEN	29,932	29,983	30,273	29,164	25,063
Caraga	647	672	676	1,209	1,188
ARMM	1,047	1,047	1,036	1,185	1,182
P-Preliminary					



Table 11. Volume of Production by Region, by Quarter, Philippines, 2009-2010
(in '000 metric tons, liveweight)

	PRODUCTION									
	2009					2010				
	Q 1	Q 2	Q 3	Q 4	Annual	Q 1	Q 2	Q 3	Q 4P	Annual
PHILIPPINES	55,967	61,817	56,268	71,048	245,100	57,911	64,930	55,595	73,307	251,743
LUZON	24,853	28,642	25,354	32,190	111,039	26,279	29,451	25,131	31,855	112,716
CAR	1,210	1,214	1,302	1,775	5,501	1,231	1,083	1,305	1,343	4,962
Ilocos Region	6,909	6,733	7,153	6,153	26,948	7,116	7,046	7,366	5,779	27,307
Cagayan Valley	3,213	2,928	3,136	3,006	12,283	3,682	3,354	3,156	2,928	13,120
Central Luzon	3,297	4,401	4,694	4,904	17,296	4,267	4,051	4,225	5,561	18,104
CALABARZON	4,962	7,603	3,813	7,815	24,193	4,532	8,652	3,632	7,895	24,711
MIMAROPA	2,168	2,759	2,109	4,739	11,775	2,171	2,201	2,001	4,361	10,734
Bicol Region	3,094	3,004	3,147	3,798	13,043	3,280	3,064	3,446	3,988	13,778
VISAYAS	11,807	10,483	11,605	12,892	46,787	11,278	9,888	11,439	13,015	45,620
Western Visayas	5,048	5,168	4,730	4,832	19,778	4,200	4,300	5,209	5,315	19,024
Central Visayas	6,103	4,536	6,055	7,650	24,344	6,430	4,895	5,695	7,330	24,350
Eastern Visayas	656	779	820	410	2,665	648	693	535	370	2,246
MINDANAO	19,307	22,692	19,309	25,966	87,274	20,354	25,591	19,025	28,437	93,407
Zamboanga Peninsula	3,479	2,768	3,829	4,131	14,207	3,896	2,187	3,676	4,357	14,116
Northern Mindanao	7,855	9,450	6,450	9,860	33,615	8,169	10,696	6,480	9,085	34,430
Davao Region	2,375	2,633	2,492	2,700	10,200	2,519	3,300	2,416	3,202	11,437
SOCCKSARGEN	3,402	4,725	3,748	5,236	17,111	3,555	5,155	4,040	5,760	18,510
Caraga	410	228	390	196	1,224	415	267	400	284	1,366
ARMM	1,786	2,888	2,400	3,843	10,917	1,800	3,986	2,013	5,749	13,548

P-Preliminary

Department of Agriculture
BUREAU OF AGRICULTURAL STATISTICS
1184 Ben-lor Bldg., Quezon Avenue, Quezon City
LIVESTOCK & POULTRY STATISTICS DIVISION
332-15-43
info@bas.gov.ph

<http://www.bas.gov.ph>