



ISSN-2012-0664

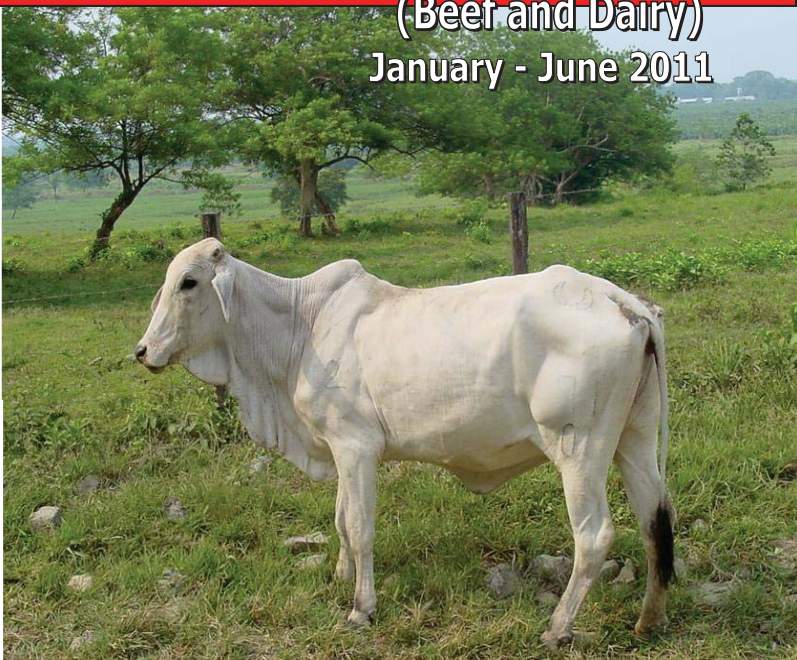


Republic of the Philippines
Department of Agriculture
BUREAU OF AGRICULTURAL STATISTICS
Quezon City

CATTLE INDUSTRY PERFORMANCE REPORT

(Beef and Dairy)

January - June 2011



September 2011



EXPLANATORY NOTES

This semi-annual Industry Performance Report on cattle presents the industry situation in terms of inventory by farm type and age classification; volume of production; supply and disposition; and monthly average prices at farmgate, wholesale and retail levels.

This is the first issue of the semi-annual Industry Performance Report. The Bureau of Agricultural Statistics (BAS) intends to release this report every 15th of September covering January to June data of the current year.

The Livestock and Poultry data system of the Bureau of Agricultural Statistics (BAS) is supported by two (2) major surveys namely:

- 1) The Backyard Livestock and Poultry Survey (BLPS) which covers one (1) of the four (4) replicate samples of the Palay and Corn Production Survey (PCPS) consisting of 9,700 sample households in 673 sample barangays nationwide; and
- 2) The Commercial Livestock and Poultry Survey (CLPS) which covers around 96 independent farms as of January 2010 updated list. A cattle farm is considered commercial when it has a farm capacity of at least 21 head of adult cattle.

Both surveys for cattle are simultaneously conducted January and July in all provinces.

Another survey that supports the statistical requirements of the livestock and poultry sector is the Survey of Abattoirs and Dressing Plants (SADP)*. This is also known as Survey of Animals Slaughtered in Abattoirs and Dressing Plants. This covers around 1,120 accredited and non-accredited abattoirs nationwide. This is undertaken in coordination with the National Meat Inspection Service (NMIS).

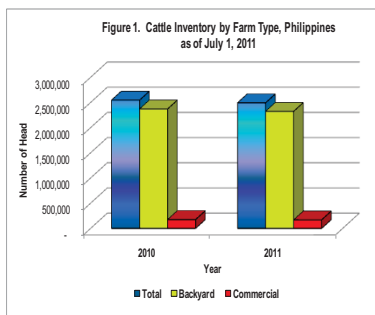
*ii***CATTLE INDUSTRY PERFORMANCE REPORT****TABLE OF CONTENTS**

Explanatory Notes	i
Table of Contents	ii
Highlights	iii
Inventory	
By Farm Type and by Age Classification	1
Dairy Cattle by Age	2
Top Producing Regions	2
Production	3
Milk Production	4
Supply and Disposition	5
Prices	7
Figures	
1. Cattle Inventory by Farm Type, Philippines, as of July 1, 2011	iii
2. Volume of Production, Philippines, January-June, 2010-2011	iii
3. Average Prices by Market Levels, Philippines and Metro Manila, January-June, 2010-2011	iii
4. Distribution of Cattle Inventory by Age Classification, Philippines, as of July 1, 2011	1
5. Cattle Inventory of Top Producing Regions, as of July 1, 2011	2
6. Monthly Average Farmgate Price, Philippines, January-June, 2009-2011	7
7. Monthly Average Wholesale Price, Metro Manila, January-June, 2009-2011	7
8. Monthly Average Retail Price of Beef Rump, Metro Manila, January-June, 2009-2011	7
Tables	
1. Cattle Inventory by Farm Type and by Age Classification, Philippines as of July 1, 2009-2011	1
2. Cattle Inventory of Top Producing Regions by Farm Type, as of July 1, 2011P	2
3. Dairy Cattle: Inventory by Age, Philippines as July 1, 2009-2011P	3
4. Volume of Production, by Quarter and by Semester, Philippines, 2009-2011	4
5. Animals on the Milkline and Milk Production by Source, Philippines, January-June, 2010-2011	5
6. Supply and Disposition, Philippines, January-June, 2009-2011	6
7. Monthly Average Farmgate and Market Prices, Philippines and Metro Manila January-June, 2009-2011	8
8. Cattle Inventory in Backyard and Commercial Farms, by Semester and by Region Philippines, as of January 1 and July 1 2009-2011	9
9. Cattle: Total Production, by Quarter, by Semester and by Region, Philippines January-June, 2010-2011	10

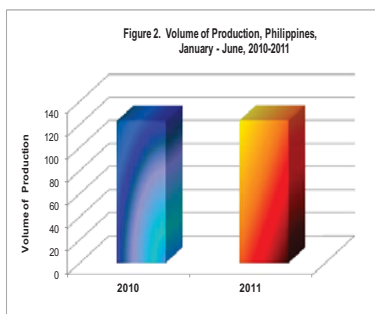


HIGHLIGHTS

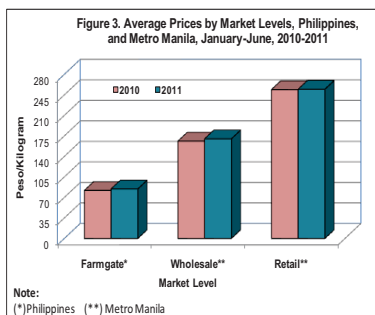
❖ As of July 1, 2011, the total cattle inventory in the country was 2.49 million head. This was 2.10 percent lower than last year's record of 2.55 million head. The inventory of cattle from backyard and commercial farms decreased by 2.00 percent and 3.47 percent respectively. Around 93 percent of the total cattle inventory were raised in backyard farms and only 7 percent were raised in commercial farms.



❖ During the period, January to June 2011, cattle production was 123.34 thousand metric tons. It was 0.40 percent higher than the production of 122.84 thousand metric tons in the same period last year.



❖ The average farmgate price of live cattle during January-June 2011 was P84.48 per kilogram. This was 4.56 percent higher than the previous year's price. At the wholesale level, the semi-annual average price was P170.00 per kilogram or 2.41 percent higher than last year's P166.00 per kilogram. The average retail price at P254.58 per kilogram increased by 0.25 percent from the level of the same period last year at P253.94 per kilogram.





1 CATTLE INDUSTRY PERFORMANCE REPORT

INVENTORY

Table 1. Cattle Inventory by Farm Type and by Age Classification, Philippines, as of July 1, 2009-2011 (Number of Head)

ITEM	2009	2010	2011	Percent Change	
				10/09	11/10
TOTAL	2,600,363	2,546,919	2,493,475	(2.06)	(2.10)
BACKYARD	2,433,399	2,370,903	2,323,568	(2.57)	(2.00)
COMMERCIAL	166,964	176,016	169,907	5.42	(3.47)
COW	1,069,660	1,057,353	1,063,977	(1.15)	0.63
Backyard	998,895	981,940	989,481	(1.70)	0.77
Commercial	70,765	75,413	74,496	6.57	(1.22)
HEIFER	473,515	462,866	454,239	(2.25)	(1.86)
Backyard	440,122	428,819	420,258	(2.57)	(2.00)
Commercial	33,393	34,047	33,981	1.96	(0.19)
YEARLING^{1/}	489,156	478,237	468,922	(2.23)	(1.95)
Backyard	459,774	447,966	439,022	(2.57)	(2.00)
Commercial	29,382	30,271	29,900	3.03	(1.23)
BULLS	299,256	292,445	286,575	(2.28)	(2.01)
Backyard	286,107	278,759	273,194	(2.57)	(2.00)
Commercial	13,149	13,686	13,381	4.08	(2.23)
OTHERS^{2/}	268,776	256,018	219,762	(4.75)	(14.16)
Backyard	248,501	233,419	201,613	(6.07)	(13.63)
Commercial	20,275	22,599	18,149	11.46	(19.69)

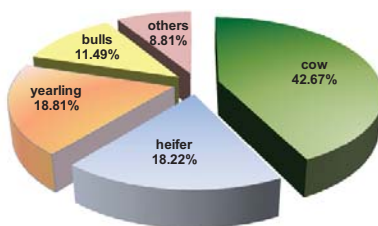
P-Preliminary

^{1/} Male and female 1 year old and below including calves

^{2/} Include castrated male and ready to breed bull

- ❖ As of July 1, 2011, the total cattle inventory was 2,493,475 head or 2.10 percent lower than last year's inventory.
- ❖ Of the total cattle population, cows accounted for about 43 percent. Yearlings contributed 19 percent, heifers shared 18 percent, bulls and cattle of other age classifications accounted for 20 percent.

Figure 4. Distribution of Cattle Inventory by Age Classification, Philippines, as of July 1, 2011





Top Producing Regions

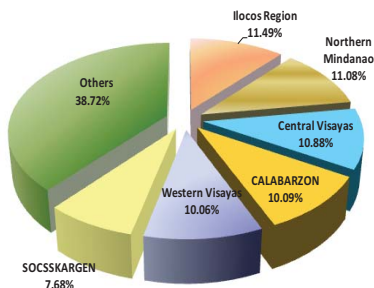
Table 2. Cattle Inventory of Top Producing Regions by Farm Type, as of July 1, 2011P
(Number of Head)

BACKYARD		COMMERCIAL		TOTAL (Backyard & Commercial)	
Region	Inventory	Region	Inventory	Region	Inventory
Ilocos Region	282,947	Bicol Region	31,785	Ilocos Region	286,579
Central Visayas	268,161	Cagayan Valley	26,286	Northern Mindanao	276,339
Northern Mindanao	252,910	Northern Mindanao	23,429	Central Visayas	271,183
Western Visayas	247,372	SOCSSKARGEN	22,410	CALABARZON	251,679
CALABARZON	244,424	Central Luzon	19,390	Western Visayas	250,815
SOCSSKARGEN	169,036	MIMAROPA	11,475	SOCSSKARGEN	191,446
Sub-Total	1,464,850		134,775		1,528,041
Others	858,717		35,132		965,434
Philippines	2,323,568		169,907		2,493,475
Percent Share					
Ilocos Region	12.18	Bicol Region	18.71	Ilocos Region	11.49
Central Visayas	11.54	Cagayan Valley	15.47	Northern Mindanao	11.08
Northern Mindanao	10.88	Northern Mindanao	13.79	Central Visayas	10.88
Western Visayas	10.65	SOCSSKARGEN	13.19	CALABARZON	10.09
CALABARZON	10.52	Central Luzon	11.41	Western Visayas	10.06
SOCSSKARGEN	7.27	MIMAROPA	6.75	SOCSSKARGEN	7.68
Sub-Total	63.04		79.32		61.28
Others	36.96		20.68		38.72
Philippines	100.00		100.00		100.00

P-Preliminary

- ❖ As of July 2011, the top five (5) producing regions in terms of total cattle inventory were Ilocos Region, Northern Mindanao, Central Visayas, CALABARZON, and Western Visayas. They contributed 53.60 percent to the total cattle inventory in the country.
- ❖ Ilocos Region had the highest share of 12.30 percent on the total backyard population. Bicol Region, on the other hand, accounted for 18.71 percent of the total commercial cattle population in the country.

Figure 5. Cattle Inventory of Top Producing Regions, as of July 1, 2011





INVENTORY OF DAIRY CATTLE

**Table 3 : Dairy Cattle: Inventory by Age, Philippines
as of July 1, 2009 – 2011P
(Number of Head)**

ANIMAL TYPE/AGE	2009	2010	2011P	Percent Change	
				10/09	11/10
CATTLE	15,340	17,337	18,095	13.02	4.37
Bull	607	629	668	3.73	6.25
Dam	6,906	7,813	7,996	13.13	2.34
Heifer	1,999	2,282	2,389	14.17	4.68
Yearling	2,645	3,111	3,327	17.62	6.94
Calf	3,183	3,502	3,715	10.01	6.07

P-Preliminary

- ❖ As of July 1, 2011, the total inventory of dairy cattle was 18,095 head, or 4.37 percent higher compared with the inventory in the same period of last year.
 - ❖ Of the total dairy cattle inventory, 44.0 percent were dams, 21.0 percent were calves, and 18.0 percent were yearlings. The rest were heifers and bulls which accounted for 13 percent and 4 percent of the total inventory, respectively.
-
-



.....

PRODUCTION

**Table 4. Volume of Production, by Quarter and by Semester,
Philippines, 2009 - 2011
(in '000 m.t. liveweight)**

Quarter/ Semester	2009	2010P	2011P	Percent Change	
				10/09	11/10
Jan-Mar	55.97	57.91	57.75	3.47	(0.28)
Apr-Jun	61.82	64.93	65.59	5.04	1.01
Jan-Jun	117.78	122.84	123.34	4.29	0.40

P-Preliminary

- ❖ For the period, January to June 2011, total cattle production was 123.34 thousand metric tons. It was 0.40 percent higher than the production of 122.84 thousand metric tons last year.
 - ❖ A higher growth of 1.01 percent in cattle production was observed in April to June 2011.
-



MILK PRODUCTION

**Table 5: Animals on the Milkline and Milk Production by Source
Philippines, January - June 2010-2011**

ANIMAL TYPE/SOURCE	2010		2011		Percent Change	
	Animals on the milkline	Production (LME* in '000 liters)	Animals on the milkline	Production (LME* in '000 liters)	Animals on the milkline	Production (LME* in '000 liters)
CATTLE	4,065	5,178.68	3,844	5,027.36	(5.44)	(2.92)
Individual	1,124	971.65	1,167	1,055.75	3.83	8.65
Cooperative	2,335	3,290.02	2,080	3,072.35	(10.92)	(6.62)
Commercial	331	626.97	314	603.28	(5.14)	(3.78)
Institutional	275	290.04	283	295.98	2.91	2.05

Source: National Dairy Authority (NDA)

*LME- refers to Liquid Milk Equivalent (for cattle 1 liter of fresh milk= 0.98 liter LME)

- ❖ The total number of cattle on the milkline during the period was 3,844 head. This was 5.44 percent lower than the previous year's count of 4,065 head.
- ❖ The volume of cow's milk production during the period was 5.03 million liters. It dropped by 2.92 percent compared with last year's output of 5.18 million liters.
- ❖ During the period January-June 2011, 61 percent of the total cows' milk came from the dairy cooperatives. The volume was down by 6.62 percent compared with that of the same period last year.



SUPPLY AND DISPOSITION

Table 6. Supply and Disposition, Philippines, January - June 2009-2011
(Number of live animals)

ITEM	2009	2010	2011P	Percent Change	
				10/09	11/10
TOTAL SUPPLY	3,020,457	3,001,281	2,923,432	(0.63)	(2.59)
Beginning Inventory ^{1/}	2,586,386	2,570,879	2,518,407	(0.60)	(2.04)
Born Alive	430,939	396,615	396,042	(7.96)	(0.14)
Imports*					
DISPOSITION	420,094	454,362	429,957	8.16	(5.37)
Slaughtered	401,287	420,876	412,180	4.88	(2.07)
Death/Losses	7,565	9,347	8,431	23.56	(9.80)
ENDING INVENTORY ^{2/}	2,600,363	2,546,919	2,493,475	(2.06)	(2.10)

P-Preliminary

1/ As of January 1

2/ As of July 1

* No record of importation of live cattle for the period

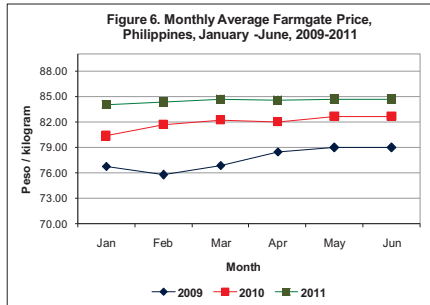
- ❖ The total supply of cattle during the period was 2.92 million head, or 2.59 percent lower than the previous year's record. The reduction in the supply of cattle was traced by the decrease in the beginning stocks and in the number of live births which were down by 2.04 percent and 0.14 percent, respectively.
- ❖ Total disposition of cattle during the period was 429.96 thousand head. It decreased by 5.37 percent compared with last year's record. The number of cattle slaughtered for meat during the period was 412.18 thousand head. This was lower by 2.07 percent against last year's record.



PRICES

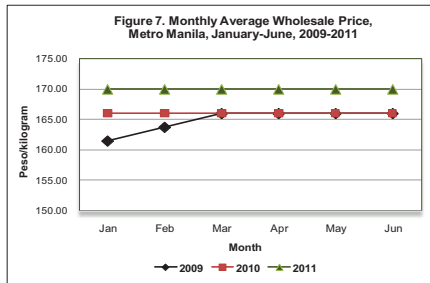
Farmgate Price

- ❖ The average farmgate price of live cattle during the first half of 2011 was P84.48 per kilogram. It increased by 3.15 percent from last year's average price of P81.89 per kilogram.



Wholesale Price

- ❖ The average wholesale price of beef per kilogram (Carcass weight) in Metro Manila was P170.00. This was 2.41 percent higher than last year's price of P166.00 per kilogram.



Retail Price

- ❖ The average retail price of beef rump during the period was P254.58 per kilogram. This was 0.25 percent higher than the average price of P253.94 per kilogram last year.

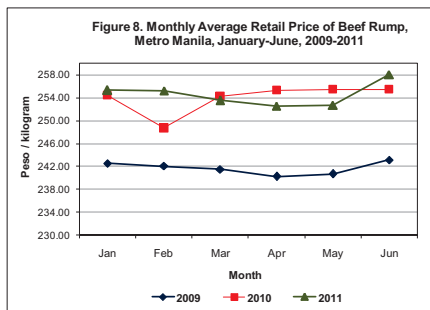




Table 7. Monthly Average Farmgate and Market Prices, Philippines and Metro Manila, January - June 2009-2011

MONTH	Farmgate Price (P/KG.) *				
	Philippines				
	2009	2010	2011	Percent Change	
10/09				11/10	
January	76.78	80.35	84.01	4.65	4.56
February	75.75	81.70	84.30	7.85	3.18
March	76.91	82.23	84.64	6.92	2.93
April	78.46	82.03	84.52	4.55	3.04
May	78.97	82.63	84.71	4.63	2.52
June	79.03	82.41	84.67	4.28	2.74
January-June	77.65	81.89	84.48	5.46	3.15
MONTH	Wholesale Price (P/KG.) *				
	Metro Manila				
	2009	2010	2011	Percent Change	
10/09				11/10	
January	161.50	166.00	170.00	2.79	2.41
February	163.75	166.00	170.00	1.37	2.41
March	166.00	166.00	170.00	0.00	2.41
April	166.00	166.00	170.00	0.00	2.41
May	166.00	166.00	170.00	0.00	2.41
June	166.00	166.00	170.00	0.00	2.41
January-June	164.88	166.00	170.00	0.68	2.41
MONTH	Retail Price (Beef Rump, P/Kg.) *				
	Metro Manila				
	2009	2010 R	2011 P	Percent Change	
10/09				11/10	
January	242.58	254.40	255.34	4.87	0.37
February	242.07	248.70	255.21	2.74	2.62
March	241.54	254.33	253.57	5.30	(0.30)
April	240.26	255.30	252.56	6.26	(1.07)
May	240.72	255.47	252.73	6.13	(1.07)
June	243.14	255.43	258.07	5.05	1.03
January-June	241.72	253.94	254.58	5.06	0.25

R-Revised

P- Preliminary

* Pesos per kilogram liveweight

Source: BAS-AMSAD



Table 8 : Cattle: Inventory in Backyard and Commercial Farms, by Semester and by Region, Philippines, 2009-2011 (Number of Head)

Region	2009		2010		2011	
	Jan 1	July 1	Jan 1	July 1	Jan 1	July 1P
TOTAL						
PHILIPPINES	2,586,386	2,600,363	2,570,879	2,546,919	2,518,407	2,493,475
CAR	53,469	55,388	53,483	64,076	57,235	56,968
Ilocos Region	347,950	344,056	317,073	303,757	291,442	286,579
Cagayan Valley	192,404	197,463	197,541	191,211	191,660	186,699
Central Luzon	172,243	174,955	173,144	171,775	171,313	169,881
CALABARZON	254,749	256,376	255,253	251,365	250,927	251,679
MIMAROPA	94,488	91,611	87,144	91,996	90,267	92,331
Bicol Region	69,200	70,776	68,759	73,012	73,779	77,150
Western Visayas	212,634	217,179	225,383	240,490	243,334	250,815
Central Visayas	269,306	271,754	275,207	271,078	273,311	271,183
Eastern Visayas	17,799	16,670	15,349	14,641	14,671	14,596
Zamboanga Peninsula	160,970	151,934	155,994	142,996	140,079	131,883
Northern Mindanao	277,784	285,520	281,442	279,480	278,426	276,339
Davao Region	138,179	138,205	140,144	136,330	138,175	136,326
SOCCSKSARGEN	199,045	200,310	203,105	198,485	195,727	191,446
Caraga	16,522	17,562	18,097	19,113	18,828	18,833
ARMM	109,644	110,604	103,761	97,114	89,233	80,767
BACKYARD						
PHILIPPINES	2,421,725	2,433,399	2,403,296	2,370,903	2,343,975	2,323,568
CAR	45,673	47,593	45,778	52,275	49,932	49,495
Ilocos Region	343,972	340,164	313,269	299,430	287,559	282,947
Cagayan Valley	179,448	180,577	180,111	171,994	166,343	160,413
Central Luzon	149,909	155,048	153,260	152,111	151,571	150,491
CALABARZON	249,842	251,029	249,864	243,950	243,438	244,424
MIMAROPA	84,421	81,688	77,273	80,549	78,762	80,856
Bicol Region	42,568	43,329	42,110	42,360	42,285	45,365
Western Visayas	210,965	215,575	221,318	236,860	239,730	247,372
Central Visayas	267,054	269,709	273,439	268,492	270,470	268,161
Eastern Visayas	12,929	12,247	11,302	11,453	12,249	12,045
Zamboanga Peninsula	160,577	151,569	155,633	142,245	139,393	131,217
Northern Mindanao	248,628	255,818	252,360	255,575	252,650	252,910
Davao Region	132,154	132,279	134,601	130,455	132,858	131,065
SOCCSKSARGEN	169,113	170,327	172,832	169,321	170,664	169,036
Caraga	15,875	16,890	17,421	17,904	18,020	18,088
ARMM	108,597	109,557	102,725	95,929	88,051	79,682
COMMERCIAL						
PHILIPPINES	164,661	166,964	167,583	176,016	174,432	169,907
CAR	7,796	7,795	7,705	11,801	7,303	7,473
Ilocos Region	3,978	3,892	3,804	4,327	3,883	3,632
Cagayan Valley	12,956	16,886	17,430	19,217	25,317	26,286
Central Luzon	22,334	19,907	19,884	19,664	19,742	19,390
CALABARZON	4,907	5,347	5,389	7,415	7,489	7,254
MIMAROPA	10,067	9,923	9,871	11,447	11,505	11,475
Bicol Region	26,632	27,447	26,649	30,652	31,494	31,785
Western Visayas	1,669	1,604	4,065	3,630	3,604	3,443
Central Visayas	2,252	2,045	1,768	2,586	2,841	3,022
Eastern Visayas	4,870	4,423	4,047	3,188	2,422	2,551
Zamboanga Peninsula	393	365	361	751	686	666
Northern Mindanao	29,156	29,702	29,082	23,905	25,776	23,429
Davao Region	6,025	5,926	5,543	5,875	5,317	5,261
SOCCSKSARGEN	29,932	29,983	30,273	29,164	25,063	22,410
Caraga	647	672	676	1,209	808	745
ARMM	1,047	1,047	1,036	1,185	1,182	1,085

P - Preliminary



Table 9. CATTLE: Total Production, by Quarter, by Semester and by Region, Philippines, 2010-2011
(in '000 metric tons, liveweight)

REGION	2010			2011		
	Q 1	Q 2	SEM1	Q 1	Q 2	SEM1 P
PHILIPPINES	57,911	64,930	122,841	57,750	65,588	123,338
LUZON	26,279	29,451	55,730	26,271	29,363	55,634
CAR	1,231	1,083	2,314	1,176	1,120	2,296
Ilocos Region	7,116	7,046	14,162	6,726	7,131	13,857
Cagayan Valley	3,682	3,354	7,036	3,692	3,281	6,973
Central Luzon	4,267	4,051	8,318	4,337	4,246	8,583
CALABARZON	4,532	8,652	13,184	4,669	8,896	13,565
MIMAROPA	2,171	2,201	4,372	2,236	2,081	4,317
Bicol Region	3,280	3,064	6,344	3,435	2,608	6,043
VISAYAS	11,278	9,888	21,166	11,233	10,152	21,385
Western Visayas	4,200	4,300	8,500	4,229	4,586	8,815
Central Visayas	6,430	4,895	11,325	6,335	4,837	11,172
Eastern Visayas	648	693	1,341	669	729	1,398
MINDANAO	20,354	25,591	45,945	20,246	26,073	46,319
Zamboanga Peninsula	3,896	2,187	6,083	3,962	2,065	6,027
Northern Mindanao	8,169	10,696	18,865	7,924	11,167	19,091
Davao Region	2,519	3,300	5,819	2,613	3,358	5,971
SOCCKSARGEN	3,555	5,155	8,710	3,504	5,129	8,633
Caraga	415	267	682	393	265	658
ARMM	1,800	3,986	5,786	1,850	4,089	5,939

P - Preliminary

Department of Agriculture
BUREAU OF AGRICULTURAL STATISTICS
1184 Ben-Ior Bldg., Quezon Avenue, Quezon City
LIVESTOCK & POULTRY STATISTICS DIVISION
332-15-43

info@bas.gov.ph

<http://www.bas.gov.ph>