

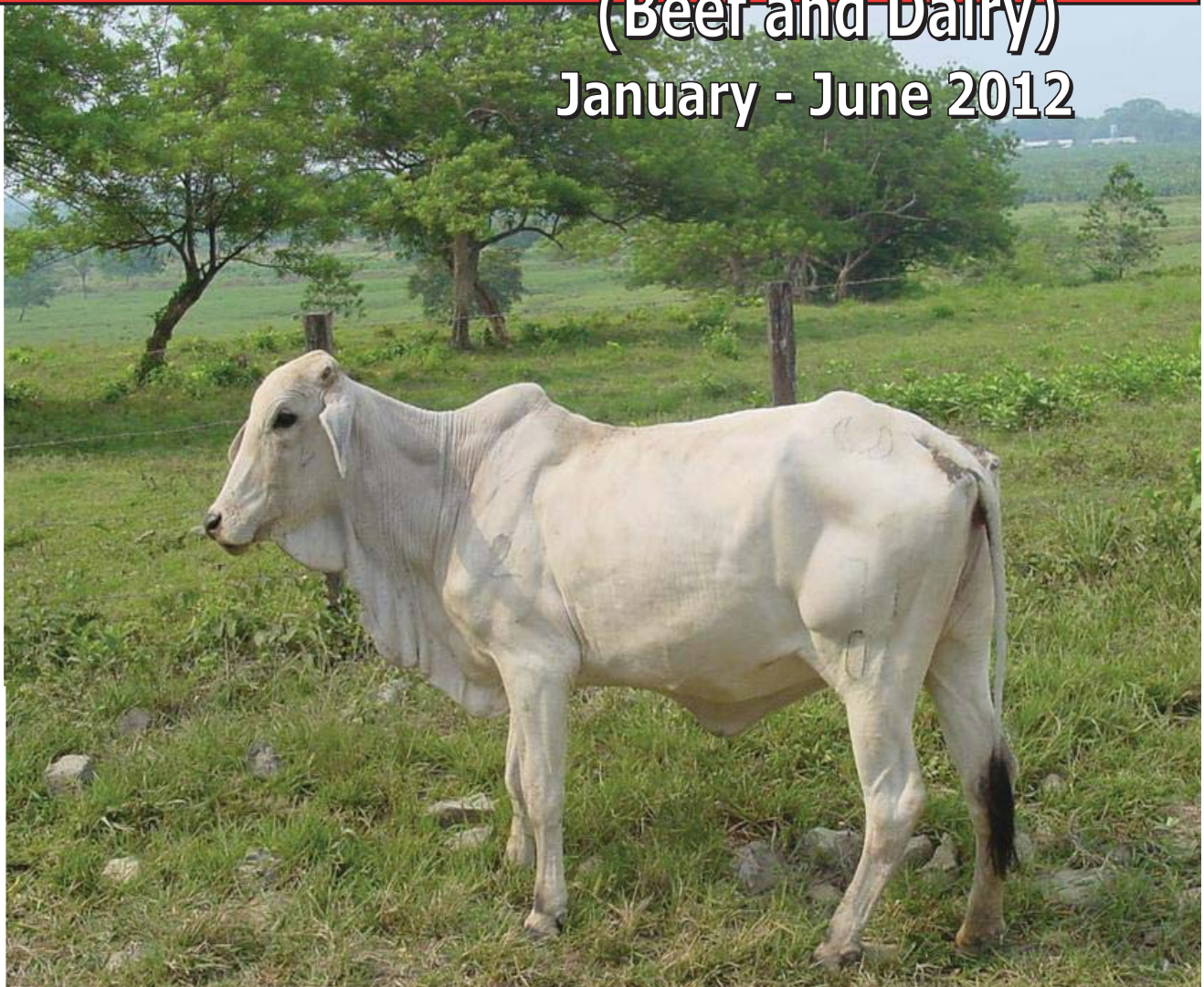


Republic of the Philippines
Department of Agriculture
BUREAU OF AGRICULTURAL STATISTICS
Quezon City

CATTLE INDUSTRY PERFORMANCE REPORT

(Beef and Dairy)

January - June 2012



September 2012



EXPLANATORY NOTES

This semi-annual Industry Performance Report on cattle presents the industry situation in terms of inventory by farm type and age classification; volume of production; supply and disposition; and monthly average prices at farmgate, wholesale and retail levels.

The Bureau of Agricultural Statistics (BAS) releases this report every 15th of September covering January to June data of the current year as reference period.

The Livestock and Poultry data system of the Bureau of Agricultural Statistics (BAS) is supported by two (2) major surveys namely:

- 1) The Backyard Livestock and Poultry Survey (BLPS) which covers one (1) of the four (4) replicate samples of the Palay and Corn Production Survey (PCPS) consisting of 9,700 sample households in 673 sample barangays nationwide; and
- 2) The Commercial Livestock and Poultry Survey (CLPS) which covers around 882 independent farms as of January 2012 updated list. A cattle farm is considered commercial when it has a farm capacity of at least 21 head of adult cattle.

Both surveys for cattle are simultaneously conducted January and July in all provinces.

Another survey that supports the statistical requirements of the livestock and poultry sector is the Survey of Abattoirs and Dressing Plants (SADP). This is also known as Survey of Animals Slaughtered in Abattoirs and Dressing Plants. This covers around 1,120 accredited and non-accredited or Locally Registered Meat Establishments (LRME) abattoirs nationwide. This is undertaken in coordination with the National Meat Inspection Service (NMIS).

**TABLE OF CONTENTS**

Explanatory Notes	i
Table of Contents	ii
Highlights	iii
Inventory	
By Farm Type and by Age Classification	1
Dairy Cattle by Age	2
Top Producing Regions	2
Production	3
Milk Production	4
Supply and Disposition	5
Prices	7

Figures

1. Cattle Inventory by Farm Type, Philippines, as of July 1, 2012	iii
2. Volume of Production, Philippines, January-June, 2011-2012	iii
3. Average Prices by Market Levels, Philippines and Metro Manila, January-June, 2011-2012	iii
4. Distribution of Cattle Inventory by Age Classification, Philippines, as of July 1, 2012	1
5. Cattle Inventory of Top Producing Regions, as of July 1, 2011	2
6. Monthly Average Farmgate Price, Philippines, January-June, 2010-2012	7
7. Monthly Average Wholesale Price, Metro Manila, January-June, 2010-2012	7
8. Monthly Average Retail Price of Beef Rump, Metro Manila, January-June, 2010-2012	7

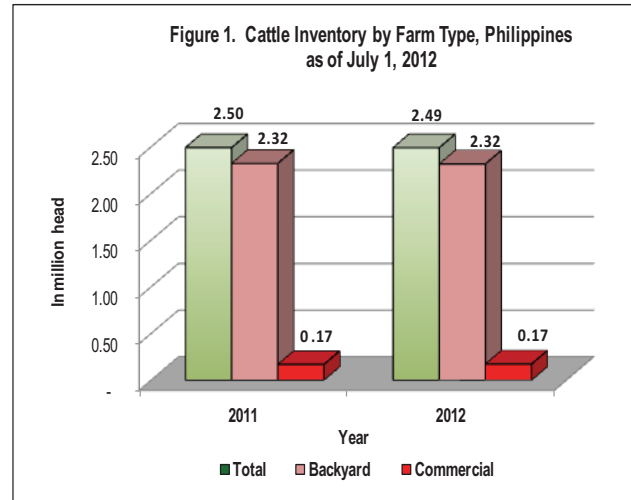
Tables

1. Cattle Inventory by Farm Type and by Age Classification, Philippines as of July 1, 2010-2012	1
2. Cattle Inventory of Top Producing Regions by Farm Type, as of July 1, 2012	2
3. Dairy Cattle: Inventory by Age, Philippines as July 1, 2010-2012	3
4. Volume of Production, by Quarter and by Semester, Philippines, January-June 2010- 2012	4
5. Animals on the Milkline and Milk Production by Source, Philippines, January-June, 2010-2012	5
6. Supply and Disposition, Philippines, January-June, 2010-2012	6
7. Monthly Average Farmgate and Market Prices, Philippines and Metro Manila January-June, 2010-2012	8
8. Cattle Inventory in Backyard and Commercial Farms, by Semester and by Region Philippines, as of January 1 and July 1 2010-2012	9
9. Cattle: Total Production, by Quarter, by Semester and by Region, Philippines January-June, 2010-2012	10

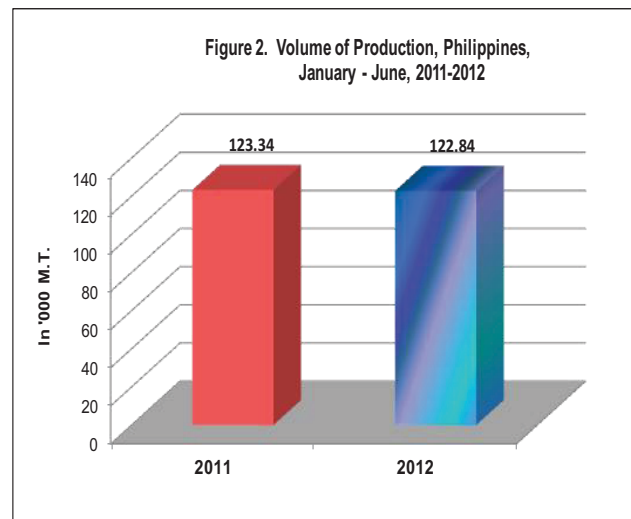


HIGHLIGHTS

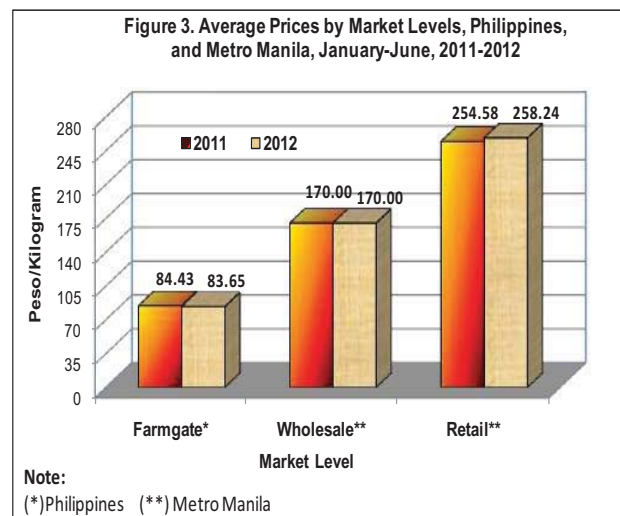
❖ The total cattle inventory in the country as of July 1, 2012 was 2.49 million head. This was 0.15 percent lower than last year's cattle population of 2.50 million head. Of the total inventory, 2.32 million head or 93 percent were raised in backyard farms. Commercial farms accounted for 0.17 million head or 7.0 percent of the total cattle headcount.



❖ Cattle production during the period, January to June 2012, was 122.84 thousand metric tons. It was 0.41 percent lower than the output of 123.34 thousand metric tons in the same period last year.



❖ The average farmgate price of live cattle during the first half of 2012 was P83.65 per kilogram. This was 0.93 percent lower than the previous year's price. At the wholesale level, the semi-annual average price was P170.00 per kilogram. It was the same average price last year. The average retail price of beef rump was P258.24 per kilogram or 1.44 percent higher than last year's record of P254.58 per kilogram.





INVENTORY

**Table 1. Cattle Inventory by Farm Type and by Age Classification
Philippines, July 1, 2010-2012
(Number of Head)**

ITEM	2010	2011	2012 P	Percent Change	
				11/10	12/11
TOTAL	2,546,919	2,496,258	2,492,422	(1.99)	(0.15)
BACKYARD	2,370,903	2,325,567	2,318,191	(1.91)	(0.32)
COMMERCIAL	176,016	170,691	174,231	(3.03)	2.07
COW	1,057,353	1,064,362	1,050,930	0.66	(1.26)
Backyard	981,940	989,481	975,068	0.77	(1.46)
Commercial	75,413	74,881	75,862	(0.71)	1.31
HEIFER	462,866	454,239	454,154	(1.86)	(0.02)
Backyard	428,819	420,258	419,475	(2.00)	(0.19)
Commercial	34,047	33,981	34,679	(0.19)	2.05
YEARLING^{1/}	478,237	468,922	468,538	(1.95)	(0.08)
Backyard	447,966	439,022	437,981	(2.00)	(0.24)
Commercial	30,271	29,900	30,557	(1.23)	2.20
BULLS	292,445	286,575	286,186	(2.01)	(0.14)
Backyard	278,759	273,194	272,435	(2.00)	(0.28)
Commercial	13,686	13,381	13,751	(2.23)	2.77
OTHERS^{2/}	256,018	222,160	232,614	(13.22)	4.71
Backyard	233,419	203,612	213,232	(12.77)	4.72
Commercial	22,599	18,548	19,382	(17.93)	4.50

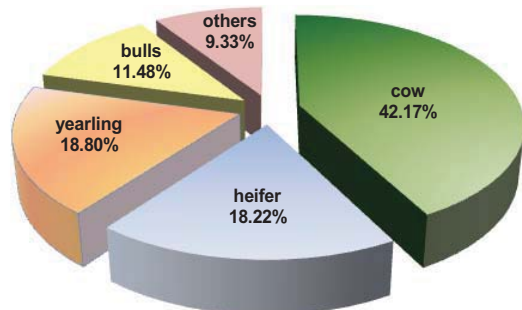
P-Preliminary

^{1/} Male and female 1 year old and below including calves

^{2/} Include castrated male and ready to breed bull

- ❖ The total cattle inventory as of July 1, 2012 was 2,492,422 head or 0.15 percent lower than last year's inventory of 2,496,258 head.
- ❖ Of the total cattle population, cows accounted for about 42 percent. Heifers contributed 18 percent, yearlings shared 19 percent, bulls and cattle of other age classifications accounted for 21 percent.

Figure 4. Distribution of Inventory by Age Classification, Philippines, as of July 1, 2012





Top Producing Regions

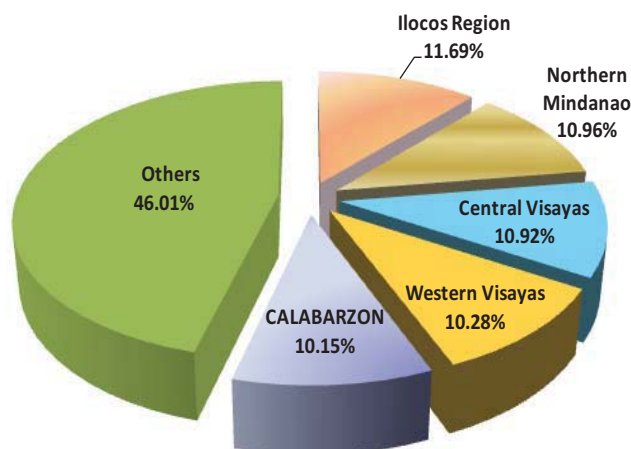
Table 2. Cattle Inventory of Top Producing Regions by Farm Type, as of July 1, 2012P
(Number of Head)

BACKYARD		COMMERCIAL		TOTAL (Backyard & Commercial)	
Region	Inventory	Region	Inventory	Region	Inventory
Ilocos Region	287,891	Bicol Region	32,780	Ilocos Region	291,253
Central Visayas	268,925	Cagayan Valley	26,878	Northern Mindanao	273,089
Western Visayas	252,410	Northern Mindanao	23,423	Central Visayas	272,198
Northern Mindanao	249,666	SOCCKSARGEN	22,105	Western Visayas	256,285
CALABARZON	245,551	Central Luzon	20,162	CALABARZON	252,935
Sub-Total	1,304,443		125,348		1,345,760
Others	1,013,748		48,883		1,146,662
Philippines	2,318,191		174,231		2,492,422
Percent Share					
Ilocos Region	12.42	Bicol Region	18.81	Ilocos Region	11.69
Central Visayas	11.60	Cagayan Valley	15.43	Northern Mindanao	10.96
Northern Mindanao	10.89	Northern Mindanao	13.44	Central Visayas	10.92
Western Visayas	10.77	SOCSSKARGEN	12.69	CALABARZON	10.28
CALABARZON	10.59	Central Luzon	11.57	Western Visayas	10.15
Sub-Total	56.27		71.94		53.99
Others	43.73		28.06		46.01
Philippines	100.00		100.00		100.00

P-Preliminary

- ❖ As of July 2012, the top five (5) producing regions in terms of cattle inventory were Ilocos Region, Northern Mindanao, Central Visayas, Western Visayas and CALABARZON. They contributed 54 percent to the total cattle inventory in the country.
- ❖ Ilocos Region had the highest share of 12.42 percent in the total backyard population. On the other hand, Bicol Region accounted for 18.81 percent of the total commercial cattle population in the country.

Figure 5. Distribution of Inventory by Top Producing Regions, Philippines, as of July 1, 2012



**INVENTORY OF DAIRY CATTLE**

**Table 3 : Dairy Cattle: Inventory by Age, Philippines
as of July 1, 2010 – 2012
(Number of Head)**

ANIMAL TYPE/AGE	2010	2011	2012P	Percent Change	
				11/10	12/11
CATTLE	17,430	18,095	19,955	3.81	10.28
Bull	649	668	747	3.00	11.74
Dam	7,813	7,996	8,352	2.34	4.45
Heifer	2,282	2,389	2,812	4.68	17.71
Yearling	3,184	3,327	3,731	4.49	12.14
Calf	3,502	3,715	4,313	6.07	16.11

P-Preliminary

- ❖ The total inventory of dairy cattle as of July 1, 2012 was 19,955 head, or 10.28 percent higher compared to last year's record of 18,095 head.
- ❖ Of the total dairy cattle inventory, 41.9 percent were dams, 21.6 percent were calves, and 18.7 percent were yearlings. The rest were heifers and bulls which accounted for 14.1 percent and 3.7 percent of the total dairy cattle inventory, respectively.



PRODUCTION

**Table 4. Volume of Production, by Quarter and by Semester, Philippines
January –June, 2010-2012
(in '000 m.t. liveweight)**

Quarter/ Semester	2010	2011	2012P	Percent Change	
				11/10	12/11
Jan-Mar	57.91	57.75	58.96	(0.28)	2.09
Apr-Jun	64.93	65.59	63.88	1.01	(2.60)
Jan-Jun	122.84	123.34	122.84	0.40	(0.41)

P-Preliminary

- ❖ Total cattle production during the first half of 2012 was 122.84 thousand metric tons liveweight. This was 0.41 percent lower compared with the production of 123.34 thousand metric tons last year.
- ❖ Cattle production increased by 2.09 percent in January to March 2012. It dropped, however, during the second quarter by 2.60 percent from last year's output.



MILK PRODUCTION

**Table 5: Animals on the Milkline and Milk Production by Source
Philippines, January - June 2010-2012**

ANIMAL TYPE/SOURCE	2010		2011		2012		Percent Change	
							2012/2011	
	Animals on the milkline	Production (LME* in '000 liters)	Animals on the milkline	Production (LME* in '000 liters)	Animals on the milkline	Production (LME* in '000 liters)	Animals on the milkline	Production (LME* in '000 liters)
CATTLE	4,065	5,178.68	3,851	5,027.36	4,412	5,393.17	14.57	7.28
Individual	1,124	971.65	1,167	1,055.75	1,447	1,311.38	23.99	24.21
Cooperative	2,335	3,290.02	2,087	3,072.35	2,328	3,158.46	11.55	2.80
Commercial	331	626.97	314	603.28	339	623.83	7.96	3.41
Institutional	275	290.04	283	295.98	298	299.50	5.30	1.19

Source: National Dairy Authority (NDA)

*LME- refers to Liquid Milk Equivalent (for cattle 1 liter of fresh milk= 0.98 liter LME)

- ❖ During the period January to June 2012, the total number of cattle on the milkline was 4,412 head. This was 14.57 percent higher than the previous year's count of 3,851 head.
- ❖ The volume of cow's milk production during the first half of 2012 was 5.39 million liters. It increased by 7.28 percent from last year's output of 5.03 million liters.
- ❖ During the first half of 2012, dairy cooperatives accounted for 58 percent of the total cows' milk production. The volume was up by 2.80 percent from last year's record.



SUPPLY AND DISPOSITION

Table 6. Supply and Disposition, Philippines, January - June 2010-2012

(Number of live animals)

ITEM	2010	2011	2012P	Percent Change	
				11/10	12/11
TOTAL SUPPLY	3,001,281	2,926,216	2,918,757	(2.50)	(0.25)
Beginning Inventory ^{1/}	2,570,879	2,518,407	2,493,157	(2.04)	(1.00)
Born Alive	430,402	407,809	425,600	(5.25)	4.36
Imports*					
DISPOSITION	454,362	429,958	426,335	(5.37)	(0.84)
Slaughtered	420,876	412,180	410,664	(2.07)	(0.37)
Death/Losses	33,486	17,778	15,671	(46.91)	(11.85)
ENDING INVENTORY ^{2/}	2,546,919	2,496,258	2,492,422	(1.99)	(0.15)

P-Preliminary

1/ As of January 1

2/ As of July 1

* No record of importation of live cattle for the period

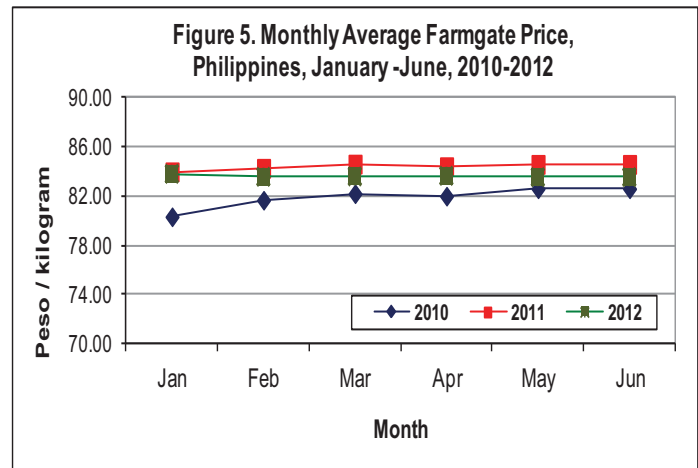
- ❖ The total supply of cattle during the first half of 2012 was 2.92 million head, or 0.25 percent lower than the previous year's record of 2.93 million head.
- ❖ Total disposition of cattle during the period was 426.34 thousand head. It went down by 0.84 percent compared with last year's record. The number of cattle slaughtered for meat during the first half of 2012 was 410.67 thousand head. It declined by 0.37 percent compared with last year's record.



PRICES

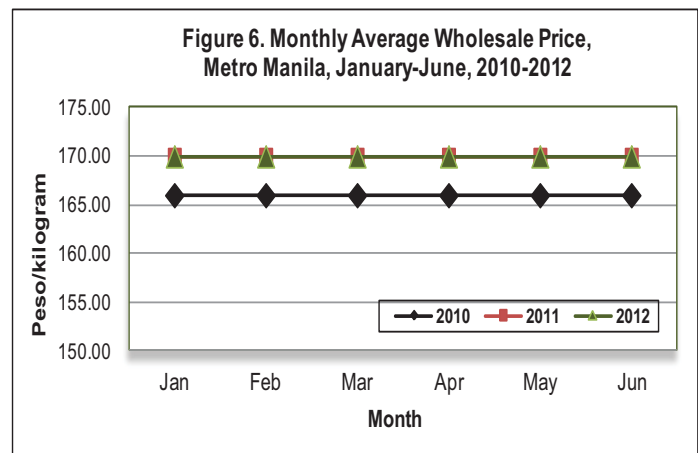
Farmgate Price

- ❖ The country's average farmgate price of live cattle during the first half of 2012 was P83.65 per kilogram. It went down by 0.93 percent from last year's average price of P84.43 per kilogram.



Wholesale Price

- ❖ During the period January to June 2012, the average wholesale price of beef per kilogram (carcass weight) in Metro Manila was P170.00. This was the same price last year.



Retail Price

- ❖ The average retail price of beef rump in Metro Manila during the period January to June 2012 was P258.24 per kilogram. This was 1.44 percent higher than the average price of P254.58 per kilogram last year.

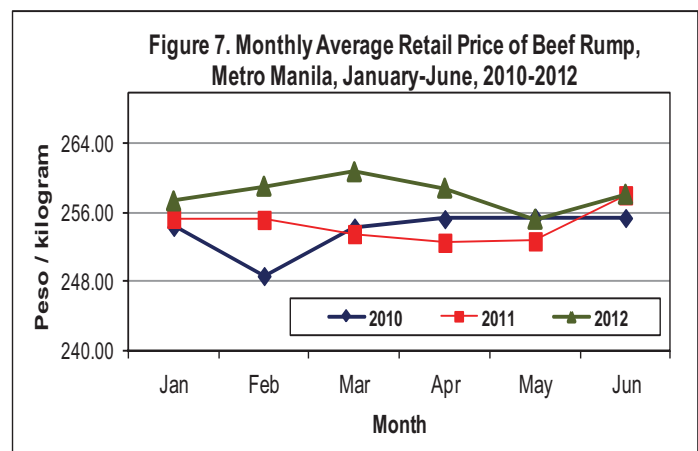




Table 7. Monthly Average Farmgate and Market Prices, Philippines and Metro Manila, January - June 2010-2012

MONTH	Farmgate Price (P/KG) *				
	Philippines				
	2010	2011	2012	Percent Change	
				11/10	12/11
January	80.35	84.01	83.81	4.56	(0.24)
February	81.70	84.30	83.57	3.18	(0.87)
March	82.23	84.64	83.60	2.93	(1.23)
April	82.03	84.43	83.65	2.93	(0.92)
May	82.63	84.62	83.54	2.41	(1.28)
June	82.41	84.59	83.73	2.65	(1.02)
January-June	81.89	84.43	83.65	3.10	(0.93)
MONTH	Wholesale Price (P/KG.) *				
	Metro Manila				
	2009	2010	2011	Percent Change	
				11/10	12/11
January	166.00	170.00	170.00	2.41	0.00
February	166.00	170.00	170.00	2.41	0.00
March	166.00	170.00	170.00	2.41	0.00
April	166.00	170.00	170.00	2.41	0.00
May	166.00	170.00	170.00	2.41	0.00
June	166.00	170.00	170.00	2.41	0.00
January-June	166.00	170.00	170.00	2.41	0.00
MONTH	Retail Price (Beef Rump, P/Kg.) *				
	Metro Manila				
	2009	2010 R	2011 P	Percent Change	
				11/10	12/11
January	254.40	255.34	257.37	0.37	0.80
February	248.70	255.21	259.07	2.62	1.51
March	254.33	253.57	260.75	(0.30)	2.83
April	255.30	252.56	258.85	(1.07)	2.49
May	255.47	252.73	255.24	(1.07)	0.99
June	255.43	258.07	258.14	1.03	0.03
January-June	253.94	254.58	258.24	0.25	1.44

P- Preliminary

* Pesos per kilogram liveweight

Source: BAS-AMSAD



Table 8 : Cattle: Inventory in Backyard and Commercial Farms, by Semester and by Region, Philippines, 2010-2012 (Number of Head)

Region	2010		2011		2012	
	Jan 1	July 1	Jan 1	July 1	Jan 1	July 1P
TOTAL						
PHILIPPINES	2,570,879	2,546,919	2,518,407	2,496,258	2,493,157	2,492,422
CAR	53,483	64,076	57,235	56,968	57,574	58,350
Ilocos Region	317,073	303,757	291,442	286,579	286,449	291,253
Cagayan Valley	197,541	191,211	191,660	186,699	182,196	180,010
Central Luzon	173,144	171,775	171,313	169,902	171,821	171,117
CALABARZON	255,253	251,365	250,927	251,678	251,744	252,935
MIMAROPA	87,144	91,996	90,267	94,331	91,265	95,410
Bicol Region	68,759	73,012	73,779	77,150	81,233	85,725
Western Visayas	225,383	240,490	243,334	250,844	253,458	256,285
Central Visayas	275,207	271,078	273,311	271,183	273,562	272,198
Eastern Visayas	15,349	14,641	14,671	14,596	20,843	21,368
Zamboanga Peninsula	155,994	142,996	140,079	131,967	129,675	120,285
Northern Mindanao	281,442	279,480	278,426	276,339	272,711	273,089
Davao Region	140,144	136,330	138,175	136,326	136,540	136,407
SOCCSKSARGEN	203,105	198,485	195,727	191,446	192,356	191,554
Caraga	18,097	19,113	18,828	18,833	19,034	20,203
ARMM	103,761	97,114	89,233	81,417	72,696	66,233
BACKYARD						
PHILIPPINES	2,403,296	2,370,903	2,343,975	2,325,567	2,321,655	2,318,191
CAR	45,778	52,275	49,932	49,495	49,056	50,340
Ilocos Region	313,269	299,430	287,559	282,947	282,977	287,891
Cagayan Valley	180,111	171,994	166,343	160,413	155,731	153,132
Central Luzon	153,260	152,111	151,571	150,491	152,336	150,955
CALABARZON	249,864	243,950	243,438	244,424	244,416	245,551
MIMAROPA	77,273	80,549	78,762	82,856	79,779	83,399
Bicol Region	42,110	42,360	42,285	45,365	48,900	52,945
Western Visayas	221,318	236,860	239,730	247,372	249,672	252,410
Central Visayas	273,439	268,492	270,470	268,161	270,175	268,925
Eastern Visayas	11,302	11,453	12,249	12,045	17,929	18,526
Zamboanga Peninsula	155,633	142,245	139,393	131,217	128,853	119,489
Northern Mindanao	252,360	255,575	252,650	252,910	249,745	249,666
Davao Region	134,601	130,455	132,858	131,065	131,558	131,315
SOCCSKSARGEN	172,832	169,321	170,664	169,036	171,085	169,449
Caraga	17,421	17,904	18,020	18,088	18,319	19,491
ARMM	102,725	95,929	88,051	79,682	71,124	64,707
COMMERCIAL						
PHILIPPINES	167,583	176,016	174,432	170,691	171,502	174,231
CAR	7,705	11,801	7,303	7,473	8,518	8,010
Ilocos Region	3,804	4,327	3,883	3,632	3,472	3,362
Cagayan Valley	17,430	19,217	25,317	26,286	26,465	26,878
Central Luzon	19,884	19,664	19,742	19,411	19,485	20,162
CALABARZON	5,389	7,415	7,489	7,254	7,328	7,384
MIMAROPA	9,871	11,447	11,505	11,475	11,486	12,011
Bicol Region	26,649	30,652	31,494	31,785	32,333	32,780
Western Visayas	4,065	3,630	3,604	3,472	3,786	3,875
Central Visayas	1,768	2,586	2,841	3,022	3,387	3,273
Eastern Visayas	4,047	3,188	2,422	2,551	2,914	2,842
Zamboanga Peninsula	361	751	686	750	822	796
Northern Mindanao	29,082	23,905	25,776	23,429	22,966	23,423
Davao Region	5,543	5,875	5,317	5,261	4,982	5,092
SOCCSKSARGEN	30,273	29,164	25,063	22,410	21,271	22,105
Caraga	676	1,209	808	745	715	712
ARMM	1,036	1,185	1,182	1,735	1,572	1,526

P - Preliminary



**Table 9. CATTLE: Total Production, by Quarter, by Semester and by Region,
Philippines, 2010-2012**
(in '000 metric tons, liveweight)

REGION	2010			2011			2012		
	Q 1	Q 2	SEM1	Q 1	Q 2	SEM1	Q 1	Q 2	SEM1 P
PHILIPPINES	57,911	64,930	122,841	57,750	65,588	123,338	58,957	63,881	122,838
LUZON	26,279	29,451	55,730	26,271	29,363	55,634	27,059	28,346	55,405
CAR	1,231	1,083	2,314	1,176	1,120	2,296	1,271	863	2,134
Ilocos Region	7,116	7,046	14,162	6,726	7,131	13,857	6,821	7,117	13,938
Cagayan Valley	3,682	3,354	7,036	3,692	3,281	6,973	3,700	3,167	6,867
Central Luzon	4,267	4,051	8,318	4,337	4,246	8,583	4,489	4,704	9,193
CALABARZON	4,532	8,652	13,184	4,669	8,896	13,565	5,040	7,978	13,018
MIMAROPA	2,171	2,201	4,372	2,236	2,081	4,317	2,327	2,067	4,394
Bicol Region	3,280	3,064	6,344	3,435	2,608	6,043	3,411	2,450	5,861
VISAYAS	11,278	9,888	21,166	11,233	10,152	21,385	11,434	10,460	21,894
Western Visayas	4,200	4,300	8,500	4,229	4,586	8,815	4,374	5,197	9,571
Central Visayas	6,430	4,895	11,325	6,335	4,837	11,172	6,440	4,630	11,070
Eastern Visayas	648	693	1,341	669	729	1,398	620	633	1,253
MINDANAO	20,354	25,591	45,945	20,246	26,073	46,319	20,464	25,075	45,539
Zamboanga Peninsula	3,896	2,187	6,083	3,962	2,065	6,027	3,900	2,081	5,981
Northern Mindanao	8,169	10,696	18,865	7,924	11,167	19,091	8,241	11,406	19,647
Davao Region	2,519	3,300	5,819	2,613	3,358	5,971	2,623	3,063	5,686
SOCCKSARGEN	3,555	5,155	8,710	3,504	5,129	8,633	3,574	5,158	8,732
CARAGA	415	267	682	393	265	658	328	343	671
ARMM	1,800	3,986	5,786	1,850	4,089	5,939	1,798	3,024	4,822

P - Preliminary

Department of Agriculture
BUREAU OF AGRICULTURAL STATISTICS
1184 Ben-lor Bldg., Quezon Avenue, Quezon City
LIVESTOCK & POULTRY STATISTICS DIVISION
332-15-43
info@bas.gov.ph

<http://www.bas.gov.ph>