

# SEASONALLY ADJUSTED RICE PRODUCTION *and* PRICES



If you want to know more about these statistics  
write or call Crops Statistics Division ☎ 376-2022  
PSA Website: <http://www.psa.gov.ph>

## PRODUCTION

The seasonally adjusted palay production for April-June 2016 was 4.32 million metric tons, lower by 0.60 percent from the 4.35 million metric tons output in the first quarter of 2016 (Table 1). The decline was attributed mainly to contraction in harvest area and decreased yield due to the adverse effects of dry spell across the country. A large part of palay rainfed areas in the province of Bohol in Central Visayas was totally damaged at vegetative and early reproductive stages of the crop due to dry spell. Moreover, the dry spell/drought in Cagayan Valley, Bicol, SOCCSKSARGEN and Caraga regions caused low yield as a result of insufficient water supply.

Year on year, this quarter's performance when deseasonalized was down by 6.02 percent or 277 thousand metric tons (Table 1).

## PRICES

The seasonally adjusted farmgate price of palay for the second quarter of 2016 was up by 0.11 percent from its first quarter 2016 level (Table 1). However, the wholesale and retail prices of rice dropped by 0.68 percent and 3.09 percent, respectively, from their levels last quarter (Table 2).

Figure 1. Quarterly palay production, Philippines, 2010-2016

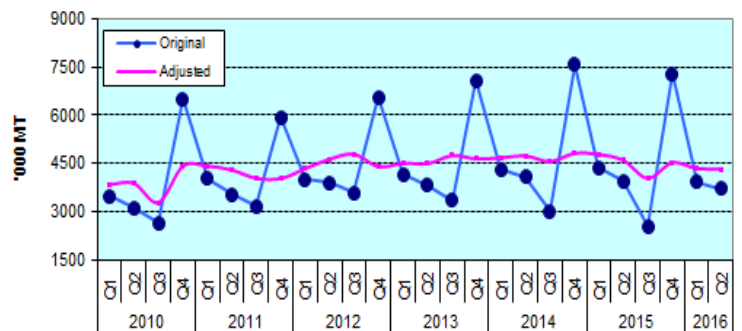


Figure 2. Quarterly farmgate prices of palay, Philippines, 2010-2016

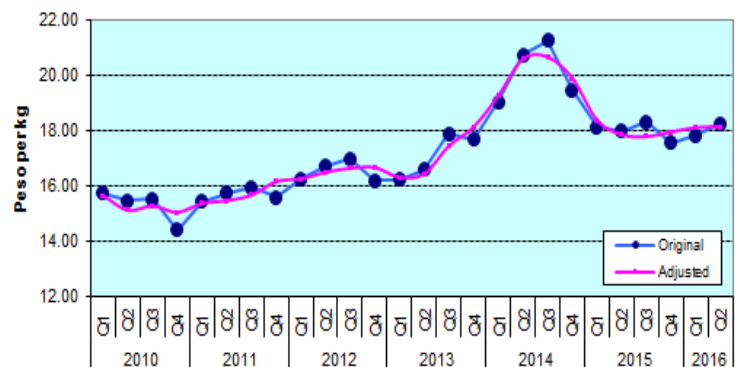
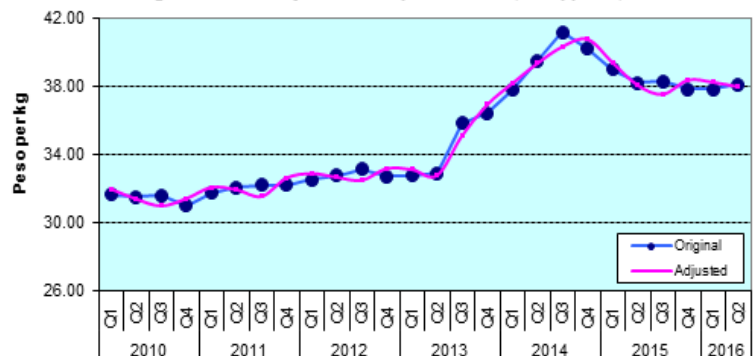
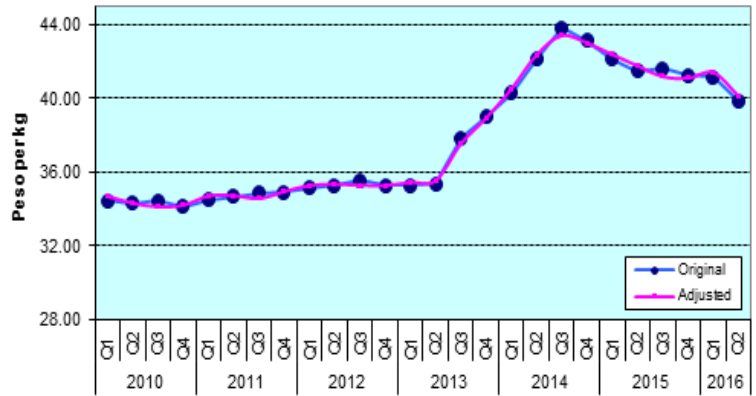


Figure 3. Quarterly wholesale prices of rice, Philippines, 2010-2016



This quarter's deseasonalized farmgate price of palay was 1.57 percent above last year's price (Table 1). On the other hand, retail and wholesale prices of rice decreased by 0.24 percent and 3.93 percent from their respective price quotations compared with the same period last year (Table 2).

Figure 4. Quarterly retail prices of rice, Philippines, 2010-2016



### Technical Notes

The original series of palay production estimates are generated from the Quarterly Palay Production Survey (PPS) of which there are four survey rounds in a year, that is, January, April, July and October. On the other hand, the original price data series are the results of Farmgate Price Survey for farmgate prices of palay, and the Wholesale and Retail Price Surveys, respectively, for wholesale and retail prices of rice.

This brief quarterly report features the deseasonalized or seasonally adjusted rice production and price data series from the first quarter of 2010 using X-11 ARIMA. The effect of season has been removed from the original data to show the trend of palay/rice production and prices without being hampered by seasonal movements.