

# SPECIAL RELEASE

## Seasonally Adjusted Rice Production and Prices: January-March 2018

**Date of Release:** 15 May 2018

Reference No. 2017- 128

### PRODUCTION

The seasonally adjusted palay production for January-March 2018 was 4.88 million metric tons lower than the 4.81 million metric tons output in the last quarter of 2017 or by 1.48 percent (Table 1). The improvement in production were credited to the increment in harvest area and yield as a result of the availability of financial and technical assistance from the government and private sectors, early harvest in anticipation of higher trading price and continuous use of high yielding varieties of seeds. These were noted by Cagayan Valley, CALABARZON, MIMAROPA and Davao Region.

Year on year, this quarter's performance when deseasonalized was up by 2.72 percent or 129 thousand metric tons (Table 1).

Figure 1. Quarterly palay production, Philippines, 2011-2018

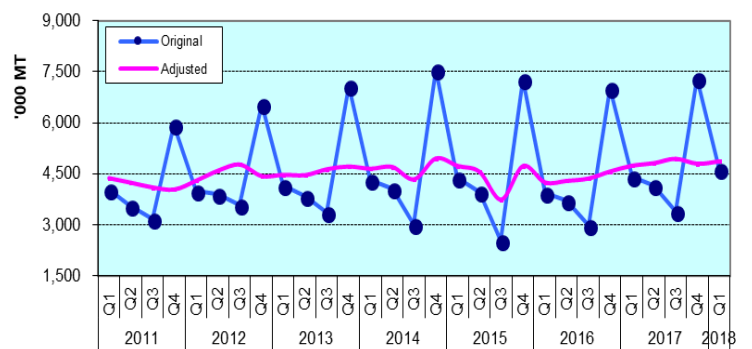


Figure 2. Quarterly farmgate prices of palay, Philippines, 2011-2018

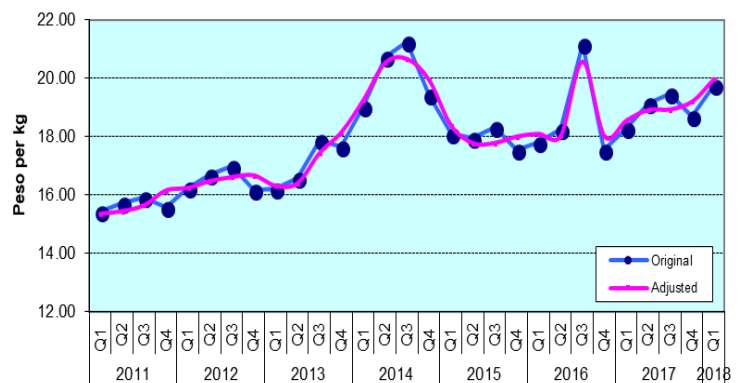
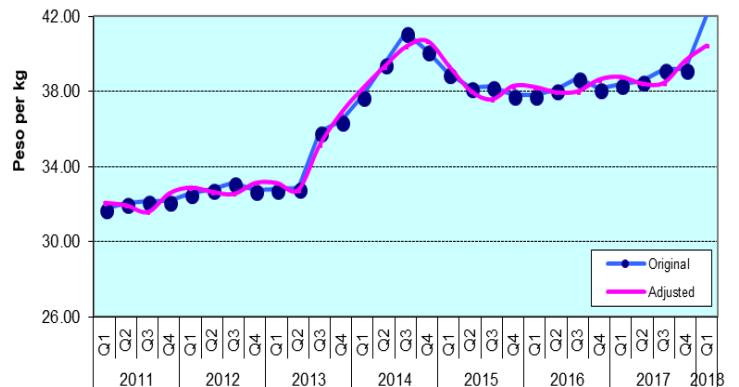


Figure 3. Quarterly wholesale prices of rice, Philippines, 2011-2018

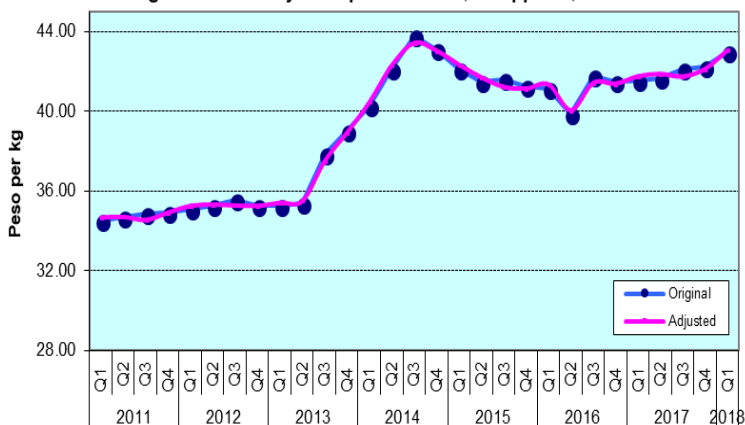


### PRICES

The seasonally adjusted farmgate price for palay in the first quarter of 2018 increased by 4.01 percent from the last quarter of 2017 level (Table 1). In the same way, wholesale and retail prices for rice rose by 2.02 percent and 2.21 percent from their corresponding levels in the previous quarter, respectively (Tables 1 and 2).

This quarter's deseasonalized farmgate price for palay was above the previous year's quotation by 7.65 percent. Wholesale and retail prices for rice were higher by 4.31 percent and 3.11 percent from the previous year's levels, respectively (Tables 1 and 2).

Figure 4. Quarterly retail prices of rice, Philippines, 2011-2018



### Technical Notes

The original series of palay production estimates are generated from the Quarterly Palay Production Survey (PPS) which has four survey rounds in a year, that is, January, April, July and October. On the other hand, the original price data series are the results of Farmgate Price Survey for farmgate prices of palay, and the Wholesale and Retail Price Surveys, respectively, for wholesale and retail prices of rice.

This brief quarterly report features the deseasonalized or seasonally adjusted rice production and price data series from the first quarter of 2011 using X-11 ARIMA. The effect of seasons has been removed from the original data to show the trend of palay/rice production and prices without being hampered by seasonal movements.

**ROMEO S. RECIDÉ**  
 Assistant Secretary  
 Deputy National Statistician  
 Sectoral Statistics Office