

# SPECIAL RELEASE

## SEASONALLY ADJUSTED RICE PRODUCTION AND PRICES: APRIL-JUNE 2017

**Date of Release:** 15 August 2017

**Reference No.** 2017- 186

### PRODUCTION

The seasonally adjusted palay production for April-June 2017 was 4.78 million metric tons, slightly higher by 0.55 percent from the 4.75 million metric tons output in the first quarter of 2017 (Table 1). The increment in production was due to higher yield attributed to the usage of high yielding varieties (HYVs) from the Department of Agriculture (DA) through the local government units (LGUs), sufficient water supply and good weather condition during the cropping period. These were noted in most of the regions except for CALABARZON, Eastern Visayas, Caraga and ARMM.

Year on year, this quarter's performance when deseasonalized was up by 11.74 percent or 502 thousand metric tons (Table 1).

### PRICES

The seasonally adjusted farmgate and retail palay/rice prices for the second quarter of 2017 improved by 1.89 percent and 0.26 percent, while, wholesale price for rice decreased by 0.85 percent from their respective levels in the first quarter of 2017 (Tables 1 & 2).

Figure 1. Quarterly palay production, Philippines, 2011-2017

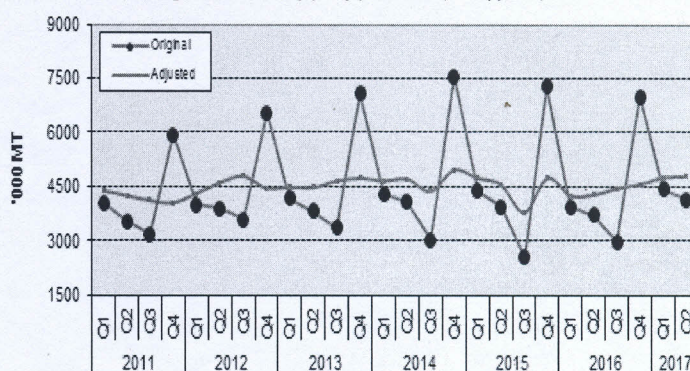


Figure 2. Quarterly farmgate prices of palay, Philippines, 2011-2017

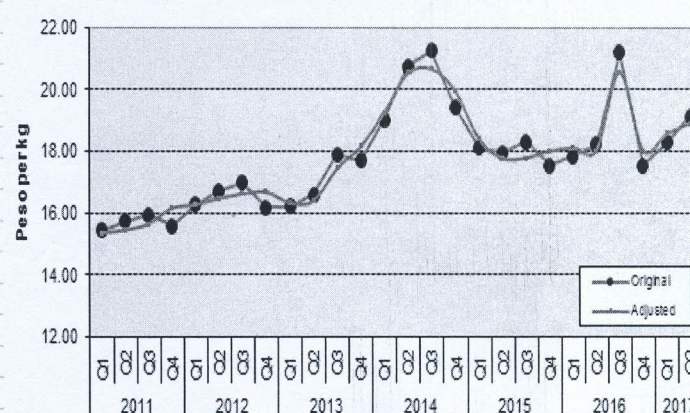
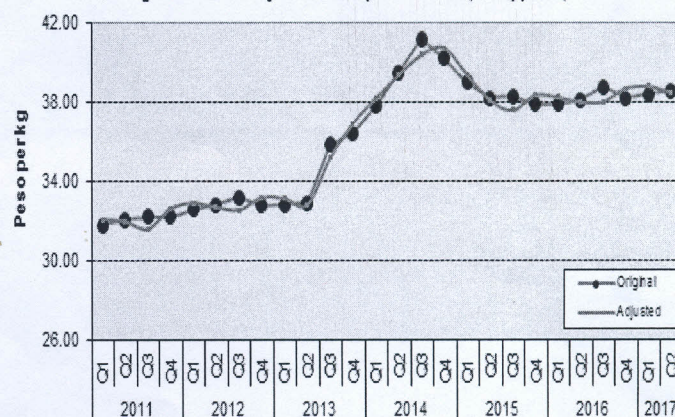
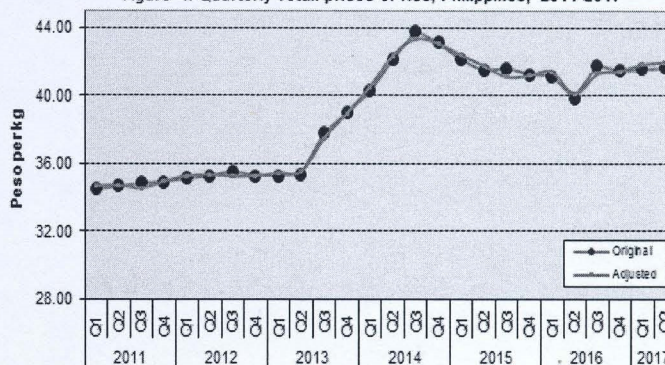


Figure 3. Quarterly wholesale prices of rice, Philippines, 2011-2017



This quarter's deseasonalized farmgate, wholesale and retail prices of palay/rice were more than previous year's quotation (Tables 1 and 2) by 4.94 percent, 1.21 percent and 4.56 percent, respectively.

Figure 4. Quarterly retail prices of rice, Philippines, 2011-2017



### Technical Notes

The original series of palay production estimates are generated from the Quarterly Palay Production Survey (PPS) of which there are four survey rounds in a year, that is, January, April, July and October. On the other hand, the original price data series are the results of Farmgate Price Survey for farmgate prices of palay, and the Wholesale and Retail Price Surveys, respectively, for wholesale and retail prices of rice.

This brief quarterly report features the deseasonalized or seasonally adjusted rice production and price data series from the first quarter of 2010 using X-11 ARIMA. The effect of seasons has been removed from the original data to show the trend of palay/rice production and prices without being hampered by seasonal movements.

FOR THE DEPUTY NATIONAL STATISTICIAN:

DULCE A. REGALA  
(Assistant National Statistician, ESSS)  
Officer-in-Charge