

# SEASONALLY ADJUSTED RICE PRODUCTION *and* PRICES

OCTOBER-DECEMBER 2016

If you want to know more about these statistics  
write or call Crops Statistics Division ☎ 376-2022  
PSA Website: <http://www.psa.gov.ph>

## PRODUCTION

The seasonally adjusted palay production for October-December 2016 was 4.485 million metric tons, slightly higher by 0.16 percent from the 4.478 million metric tons output in the third quarter of 2016 (Table 1). The increase in production was due to the improvement in yield. There were more usage of high yielding varieties and availability of subsidized seeds from the Department of Agriculture (DA). Moreover, sufficient water supply during the reproductive stage of the crop and lesser infestation of stemborers and incidence of rice blast and bacterial leaf blight contributed to higher output.

Year on year, this quarter's performance when deseasonalized was down by 4.08 percent or 191 thousand metric tons (Table 1).

## PRICES

The seasonally adjusted wholesale and retail prices of rice for the fourth quarter of 2016 improved by 2.41 percent and 0.32 percent from their respective levels in the third quarter of 2016 (Table 2). However, the farmgate price of palay declined by 12.21 percent from its level of the previous quarter (Table 1).

Figure 1. Quarterly palay production, Philippines, 2010-2016

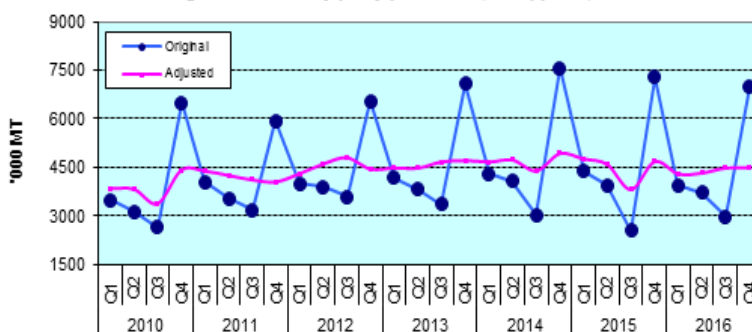


Figure 2. Quarterly farmgate prices of palay, Philippines, 2010-2016

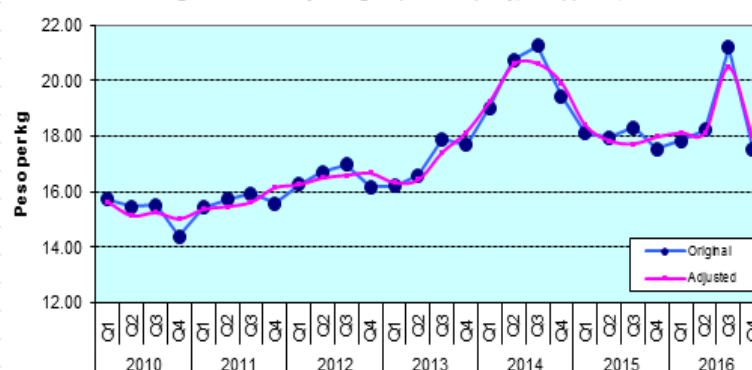
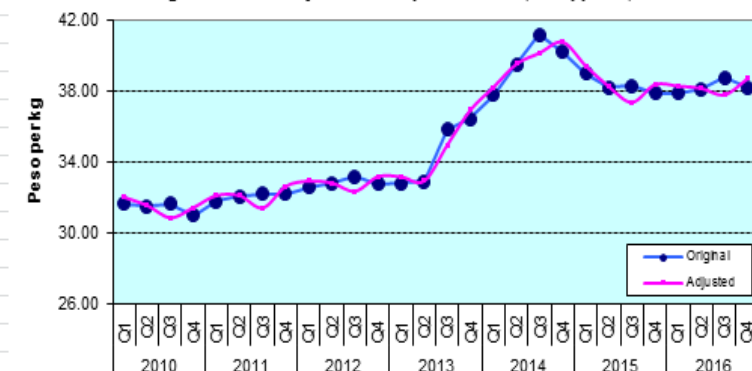
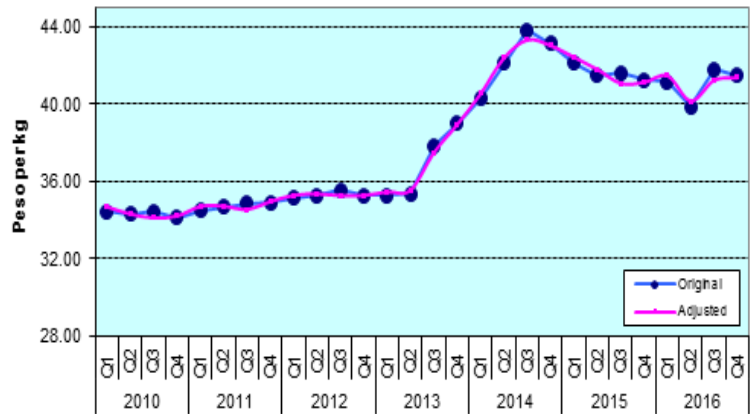


Figure 3. Quarterly wholesale prices of rice, Philippines, 2010-2016



This quarter's deseasonalized farmgate price of palay at P17.97 per kilogram was the same as previous year's quotation (Table 1). Moreover, wholesale and retail prices of rice were a little above by 0.86 percent and 0.58 percent from their respective price levels compared with the same period of previous year (Table 2).

Figure 4. Quarterly retail prices of rice, Philippines, 2010-2016



### Technical Notes

The original series of palay production estimates are generated from the Quarterly Palay Production Survey (PPS) of which there are four survey rounds in a year, that is, January, April, July and October. On the other hand, the original price data series are the results of Farmgate Price Survey for farmgate prices of palay, and the Wholesale and Retail Price Surveys, respectively, for wholesale and retail prices of rice.

This brief quarterly report features the deseasonalized or seasonally adjusted rice production and price data series from the first quarter of 2010 using X-11 ARIMA. The effect of seasons has been removed from the original data to show the trend of palay/rice production and prices without being hampered by seasonal movements.