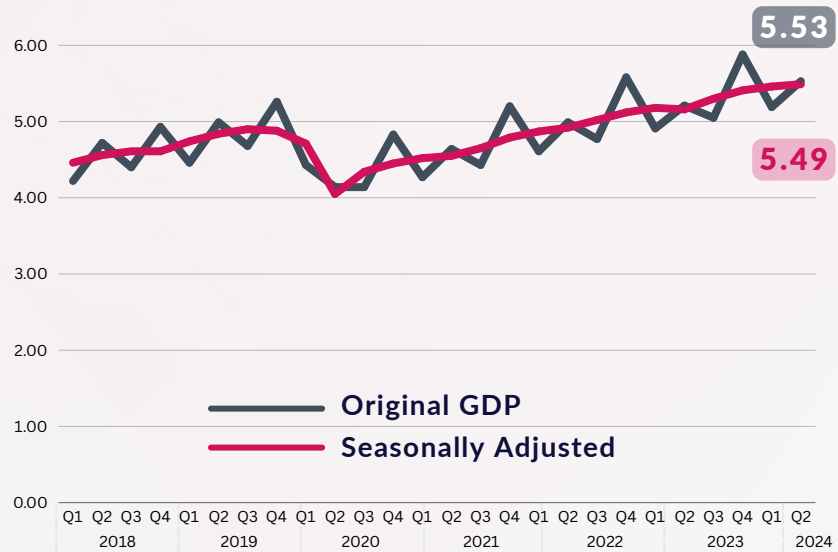


The Seasonally Adjusted National Accounts of the Philippines (SANA) presents the economic performance of the country without the influence of predictable seasonal patterns (e.g., holidays, vacation season, opening of classes, weather changes, and other calendar-related effects).

Quarter-on-Quarter Percent Change, Q1 to Q2 2024



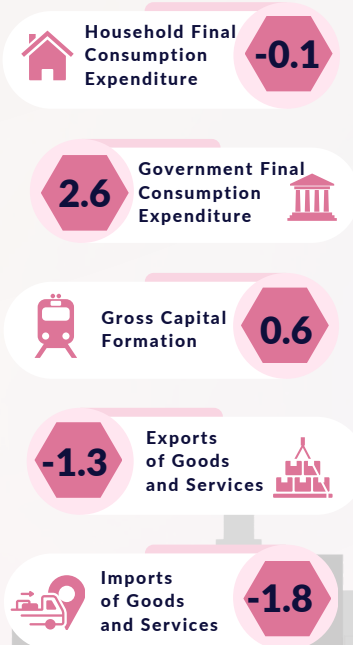
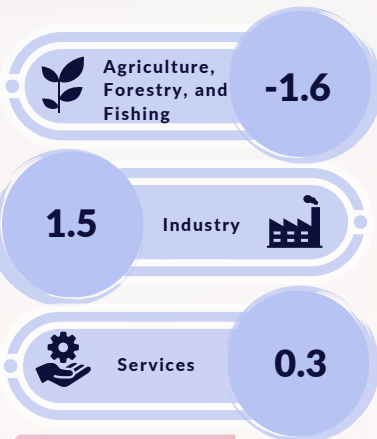
Original Data vs Seasonally Adjusted Gross Domestic Product, in Trillion Pesos Q1 2018 to Q2 2024



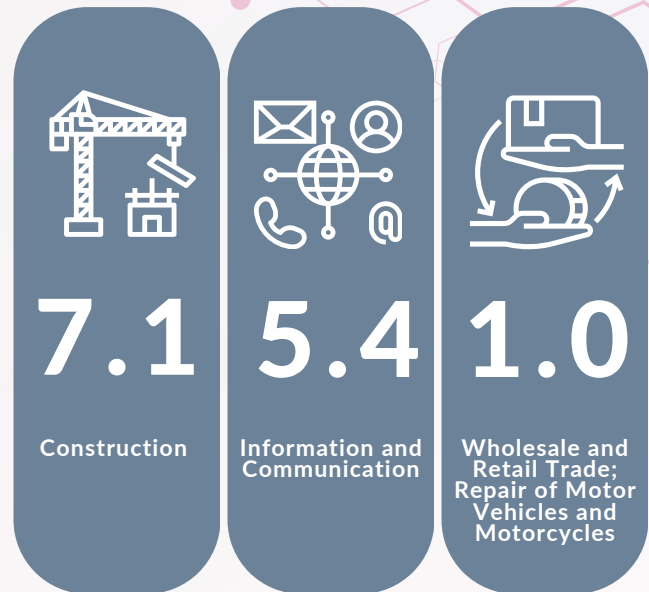
Quarter-on-Quarter Percent Change, Q1 to Q2 2024

Major Industries

Major Expenditure Items



Top Contributors to the Quarter-on-Quarter Percent Change, Q1 to Q2 2024



CSA