

### Year-on-Year Percent Change, Q2 2024

**6.3**

**GDP**

Gross Domestic Product

**GNI**

Gross National Income

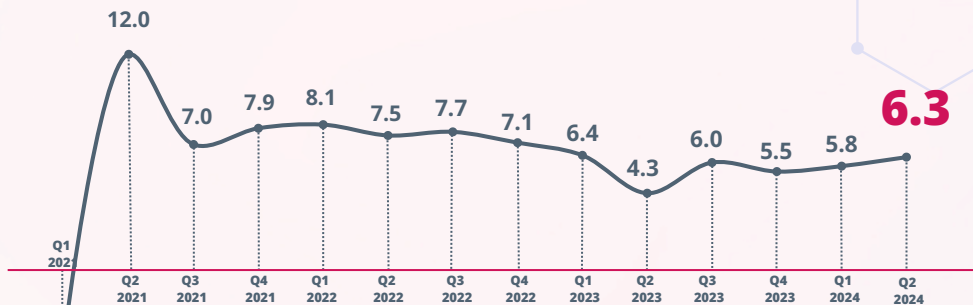
**7.9**

**24.7**

**NPI**

Net Primary Income

### Gross Domestic Product, Year-on-Year Percent Change, Q1 2021 - Q2 2024

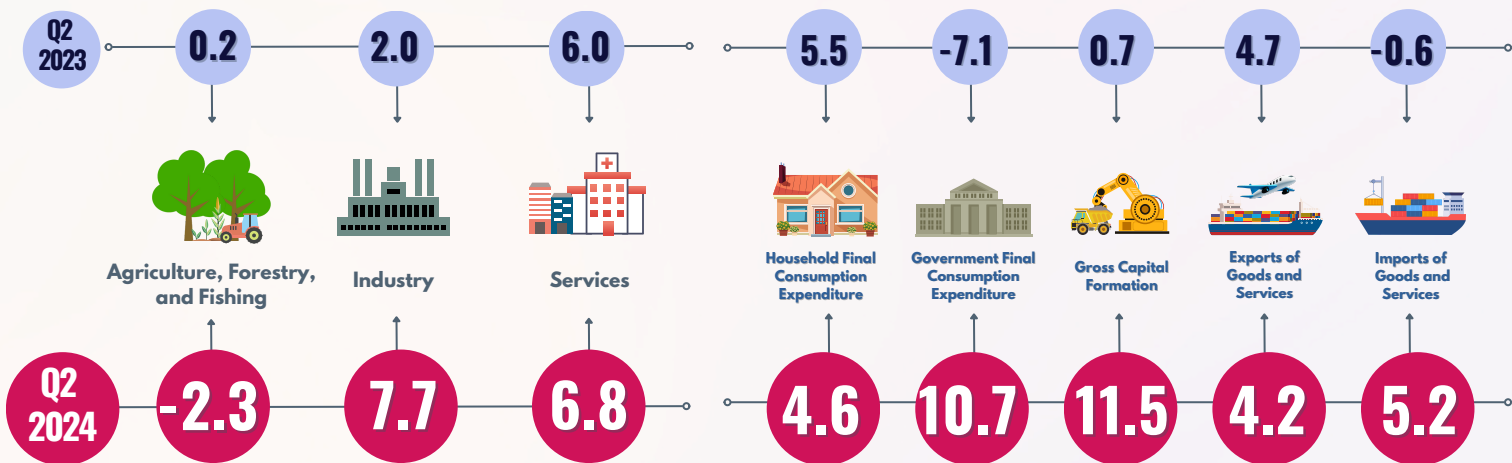


### Year-on-Year Percent Change

#### MAJOR INDUSTRIES

#### MAJOR EXPENDITURE ITEMS

Legend:



### Fastest Growths in Q2 2024, Year-on-Year Percent Change

### Top Contributors to Q2 2024 Growth, Year-on-Year Percent Change

#### Industries

#### Expenditure Items

**16.0**

