

PHILIPPINE EXPORT AND IMPORT STATISTICS

FOB Value in Billion US Dollar

JANUARY 2020

Preliminary Results



15.08

TOTAL EXTERNAL TRADE
(EXPORT + IMPORT)



3.50

DEFICIT

BALANCE OF TRADE
(EXPORT - IMPORT)

↑ 4.1%

Y-on-Y GROWTH
(JAN 2020 vs JAN 2019)

TOP 3 EXPORTED COMMODITIES

TOP 3 EXPORT TRADING PARTNERS

TOTAL EXPORT VALUE

5.79

65.3
% Share of Top 3
Commodity Groups
to Total Export Value

46.3
% Share of
Top 3 Countries
to Total Export Value

Value % Share

3.23



55.9

Electronic Products

0.34



5.8

Other Manufactured Goods

0.21



3.6

Cathodes & Sections
of Cathodes, of Related Copper

Value % Share

0.94



16.3

United States of America

0.93



16.1

Japan

0.81



14.0

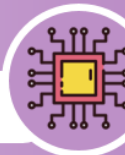
Hong Kong

TOP 3 IMPORTED COMMODITIES

TOP 3 IMPORT TRADING PARTNERS

Value % Share

2.35



25.3

Electronic Products

1.03



11.1

Mineral Fuels, Lubricants and
Related Materials

0.90



9.7

Transport Equipment

Value % Share

2.37



25.5

People's Republic of China

0.81



8.7

Japan

0.70



7.5

Republic of Korea

TOTAL IMPORT VALUE

9.29

46.1
% Share of Top 3
Commodity Groups
to Total Import Value

41.7
% Share of
Top 3 Countries
to Total Import Value

USA includes Alaska and Hawaii
Japan includes Okinawa



For Technical Inquiries
tsd.staff@psa.gov.ph



Visit us on
www.psa.gov.ph



Like us on Facebook
PhilippineStatisticsAuthority



Follow us on Twitter
@PSAgovph