



PHILIPPINE EXPORT & IMPORT STATISTICS

March 2001 - March 2021^P Growth Rates

March 2021^P FOB in USD

EXPORT



FOB VALUE | **Y-o-Y GROWTH**
\$ 6.68 | **31.6 %**
Billion | **Increase**

TOP THREE EXPORT COMMODITY GROUPS

3.60
BILLION

Electronic Products

0.63
BILLION

Other Manufactured Goods

0.27
BILLION

Machinery and Transport Equipment

IMPORT



FOB VALUE | **Y-o-Y GROWTH**
\$ 9.10 | **16.6 %**
Billion | **Increase**

TOP THREE IMPORT COMMODITY GROUPS

2.50
BILLION

Electronic Products

1.01
BILLION

Mineral Fuels, Lubricants and Related Materials

0.64
BILLION

Transport Equipment

TOP EXPORT PARTNER



1.07
BILLION
China

BOT-G



FOB VALUE | **Y-o-Y GROWTH**
\$ 2.41 | **11.5 %**
Billion Deficit | **Decrease**

TOP IMPORT PARTNER



2.13
BILLION
China

HIGHEST SURPLUS AMONG TOP TEN PARTNERS



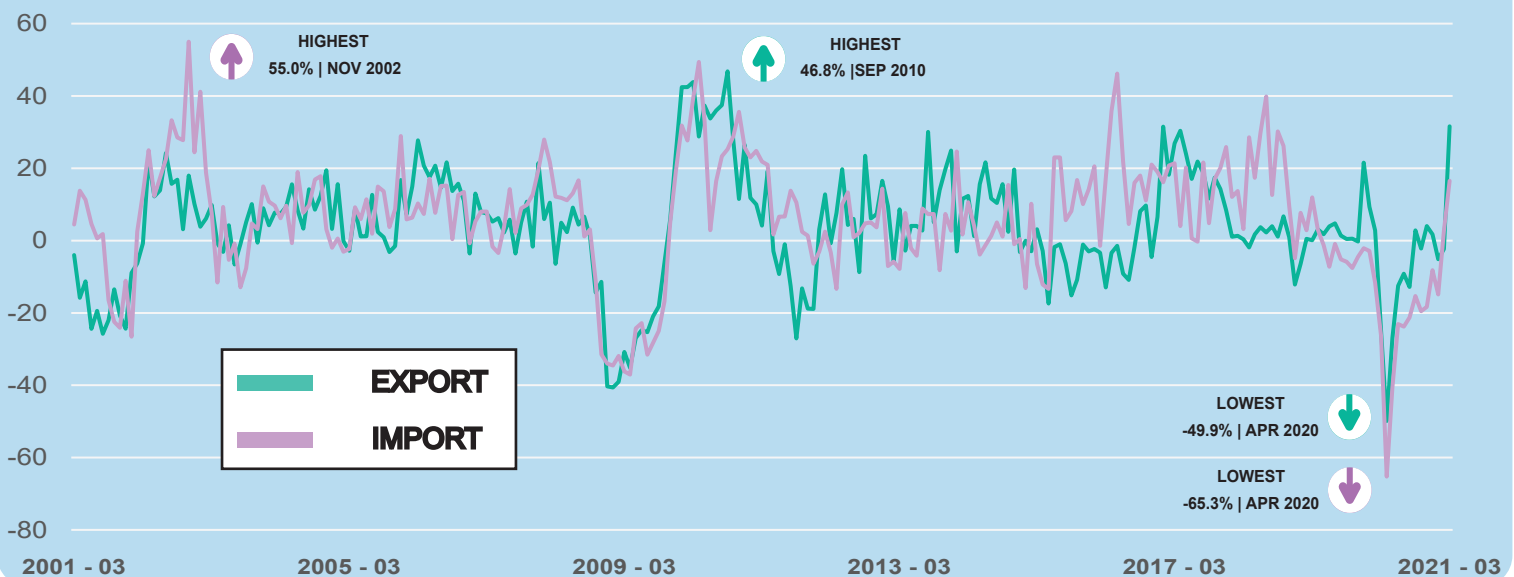
0.64
BILLION
Hong Kong

HIGHEST DEFICIT AMONG TOP TEN PARTNERS



1.06
BILLION
China

Year-on-Year Growth Rate of Export & Import: March 2001 to March 2021^P



For more information visit us on www.psa.gov.ph



For Technical Inquiries
tsd.staff@psa.gov.ph



Like us on Facebook
[PhilippineStatisticsAuthority](https://www.facebook.com/PhilippineStatisticsAuthority)



Follow us on Twitter
[@PSAgovph](https://twitter.com/PSAgovph)