

**1st
Quarter**

2018 LABOR TURNOVER STATISTICS PHILIPPINES

For every 1,000 employed

Accession
Rate

Separation
Rate

Labor
Turnover Rate

9.30% or 93

were hired



7.72% or 77

were laid-off or
left their jobs



1.58% or 16

persons were added
to total workforce



Labor Turnover Rate by Sector

Agriculture, Forestry
and Fishing

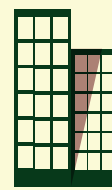
Industry

Services

2.01%



3.47%



0.95%



Top Industries with High Employment Gains

4.92%
Professional, Scientific and Technical Activities

4.29%
Mining and Quarrying

4.22%
Manufacturing

2.00%
Financial and Insurance Activities

Top 3 Industries with High Accession Rate due to:

Expansion

8.62%

Mining and
Quarrying

8.23%

Construction

5.21%

Administrative
& Support Service
Activities

Replacement

8.59%

Professional,
Scientific & Technical
Activities

8.55%

Manufacturing

7.11%

Wholesale and
Retail Trade

Top 3 Reasons for Separations Initiated by

Employers

37.7% Project
Completion

1

Employees

30.4% Hired by
another
Company

19.2% Family
Consideration

27.5% AWOL

2

8.1% Retirement

3

16.7% To Work
Abroad

Of the **29,957** establishments with **20** or more workers, there were **223,993** job vacancies

Top Industries

67,955
Administrative; Support
Service Activities

42,043
Manufacturing

32,320
Wholesale; Retail Trade

Top Major Occupation

1

46,039
Technicians and Associate
Professionals

2

38,171
Service and Sales Workers

3

36,014
Elementary Occupations



Visit us on
www.psa.gov.ph



For technical inquiries
edsd.staff@psa.gov.ph



Follow us on twitter
[@PSAgovph](https://twitter.com/PSAgovph)



Like us on facebook
PhilippineStatisticsAuthority

