



# 2019 ANNUAL SURVEY OF PHILIPPINE BUSINESS AND INDUSTRY



## Electricity, Gas, Steam, and Air Conditioning supply

### Final Results for All Establishments

**ANNUAL SURVEY OF THE PHILIPPINES BUSINESS AND INDUSTRY (ASPBI)**  
is one of the designated statistical activities of the Philippines Statistics Authority (PSA). Data collected from the survey provide information on the levels, structure, performance and trends of economic activities of the formal sector in the entire country for the year 2019

This section includes the activity of providing electric power, natural gas, steam, hot water and the like through a permanent infrastructure (network) of lines, mains and pipes. The dimension of the network is not decisive. Also included are the distribution of electricity, gas, steam, hot water and the like in industrial park or residential buildings.

This section therefore includes the operation of electric and gas utilities, which generate, control and distribute electric power or gas. Also included is the provision of steam and air-conditioning supply.

**NUMBER OF ESTABLISHMENTS**



**408** establishments in the formal sector of economy were engaged in this sector



**55,671** workers

**99.7%** paid employees

**TOTAL EMPLOYMENT**



**AVERAGE EMPLOYMENT PER ESTABLISHMENT**



**136** workers per Establishment

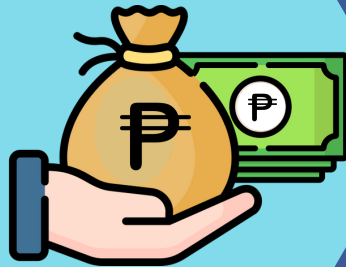


## TOTAL COMPENSATION

PhP **46.90** billion

translating to an average annual compensation of

PhP **845.12** thousand per paid employee



## TOTAL REVENUE AND TOTAL EXPENSE

PhP **1.18** trillion  
Total Revenue



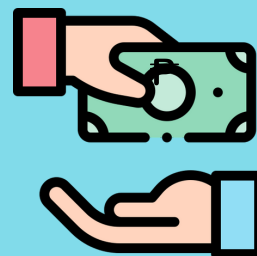
PhP **996.22** billion  
Total Expense

## REVENUE PER EXPENSE



This means that for every peso spent, a corresponding income of PhP 1.19 was generated.

## TOTAL SUBSIDIES



PhP **8.80** billion was received from the government as total subsidies

