



# 2019 ANNUAL SURVEY OF PHILIPPINE BUSINESS AND INDUSTRY



## Real Estate Activities Sector

Final Results for All Establishments

This sector includes acting as lessors, agents, and/or brokers in one or more of the following: selling or buying real estate, renting real estate, providing other estate services such as appraising real estate or acting as real estate escrow agents. Activities in this section may be carried out on own or leased property and may be done on a fee or contract basis.

**ANNUAL SURVEY OF PHILIPPINE BUSINESS AND INDUSTRY (ASPBI)**  
is one of the designated statistical activities of the Philippine Statistics Authority (PSA). Data collected from the survey provides information on the levels, structure, performance and trends of economic activities of the formal sector in the entire country for the year 2019.

### NUMBER OF ESTABLISHMENTS BY INDUSTRY

# 5,225

ESTABLISHMENTS

in the formal sector of the economy were engaged in real estate activities



# 4,569

Real estate activities with own or leased property



# 656

Real estate activities on a fee or contract basis

### TOTAL EMPLOYMENT

Of the,  

# 105,973

  
Total Employment

**99.3%** were  
Paid Employees



### AVERAGE NUMBER OF WORKERS PER ESTABLISHMENT



# 20

Workers per establishment for the sector



# 21

 Workers per Establishment  
Real estate activities with own or leased property

# 14

 Workers per Establishment  
Real estate activities on a fee or contract basis

# Real Estate Activities Sector

## TOTAL COMPENSATION

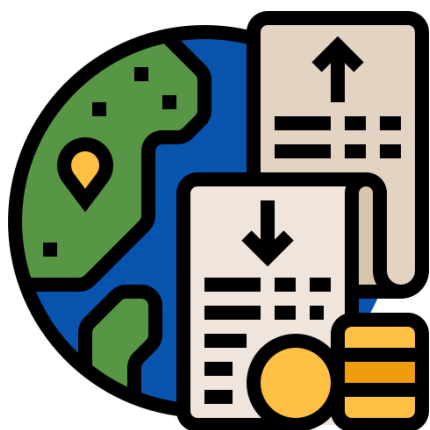
PhP **41.93**  
billion



## AVERAGE ANNUAL COMPENSATION per Paid Employee

PhP **398,476**

## TOTAL REVENUE AND TOTAL EXPENSE



### TOTAL REVENUE

PhP **1,102.40**  
billion

### TOTAL EXPENSE

PhP **716.23**  
billion

## REVENUE per EXPENSE

A corresponding revenue of

PhP **1.54**

was generated for every peso spent

## INDUSTRY WITH THE HIGHEST REVENUE AND EXPENSE



Real Estate Activities with Own or Leased Property

### TOTAL REVENUE

PhP **1,074.85**  
billion

### TOTAL EXPENSE

PhP **693.89**  
billion



PhP **14.85**  
billion

Total subsidies received by the sector from the government

## SUBSIDIES

