

Preventive and Control Measures/Activities



Occupational Safety and Health Policies/Programs



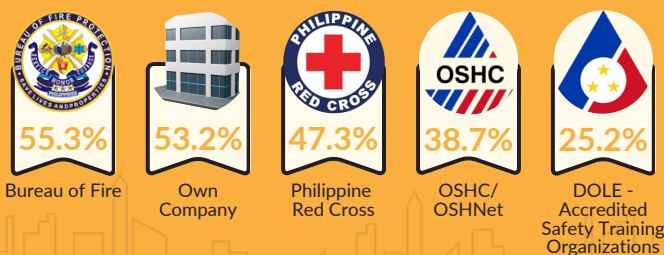
Top OSH-Related Trainings/Seminars



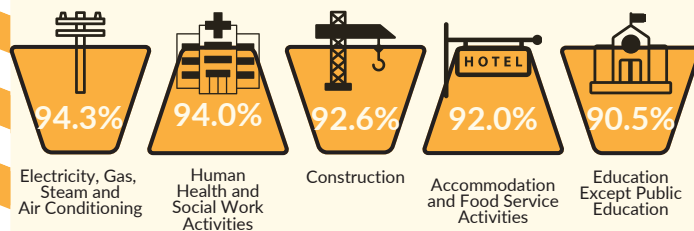
Designated Health and Safety Personnel



Agency Conducted OSH Training



Industries with Designated Health and Safety Personnel



*Among establishments that availed OSH-related trainings/seminars

1. Safety Officer 1 - refers to an employee who has completed the mandatory eight (8)-hour OSH orientation course as prescribed in the OSH Standards and two (2)-hour trainers' training.
2. Safety Officer 2 - refers to an employee who has completed the mandatory forty (40)-hour OSH training course applicable to the industry as prescribed in the OSH Standards.