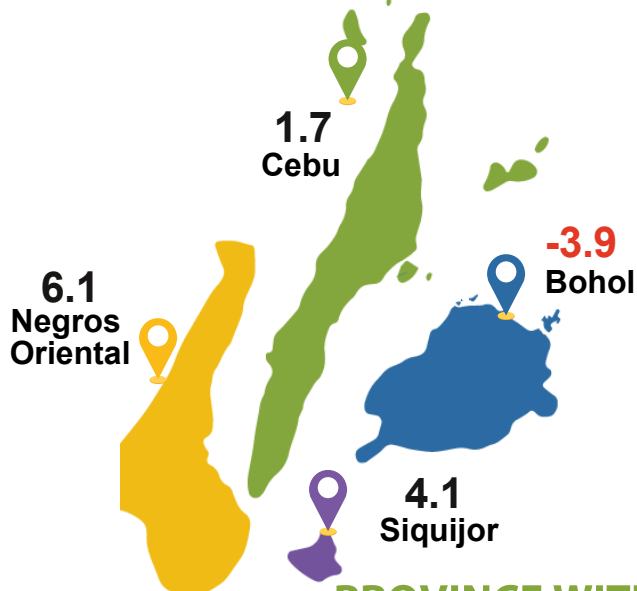




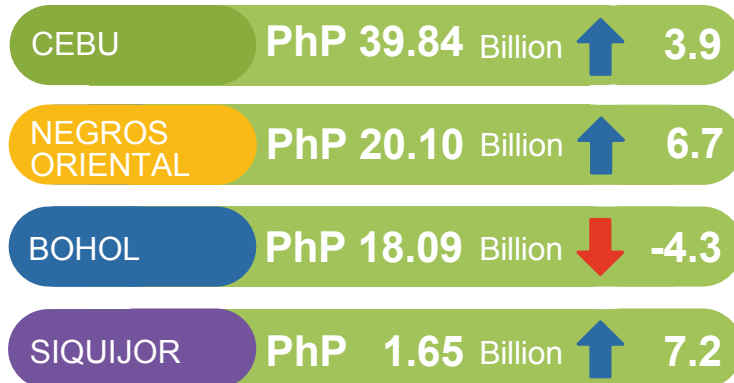
## AT CONSTANT 2018 PRICES

GROWTH RATES  
(in percent)

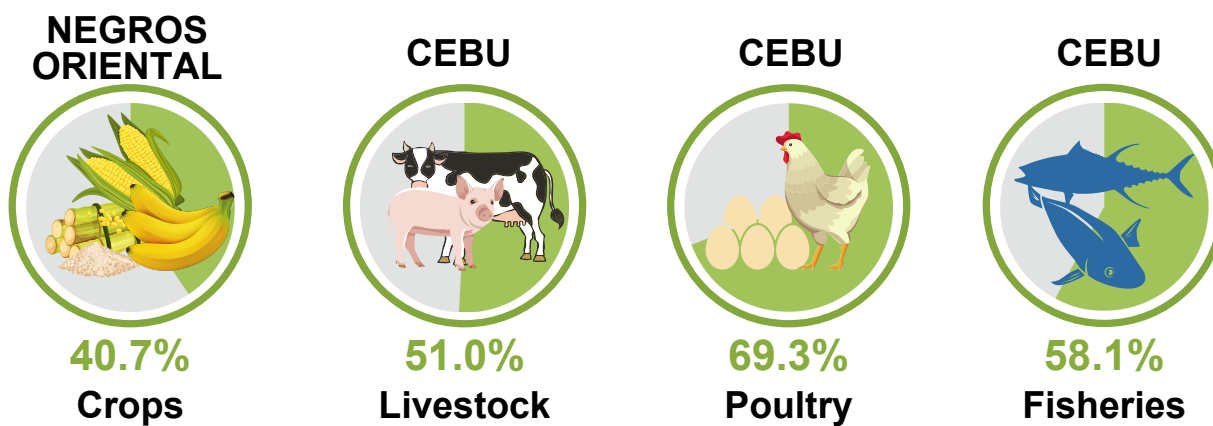


## AT CURRENT PRICES

LEVELS AND GROWTH RATES  
(in percent)



## PROVINCE WITH BIGGEST SHARE IN VALUE OF PRODUCTION BY SUBSECTOR AT CONSTANT 2018 PRICES



## PERCENT DISTRIBUTION OF VALUE OF PRODUCTION

