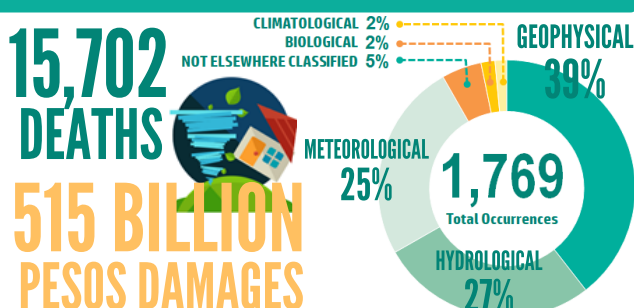


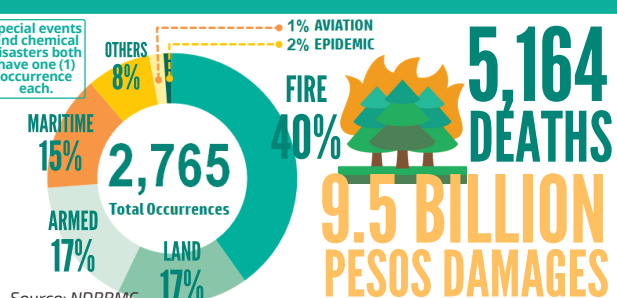
Component 4: Extreme Events and Disasters



NATURAL EXTREME EVENTS AND DISASTERS



TECHNOLOGICAL DISASTERS



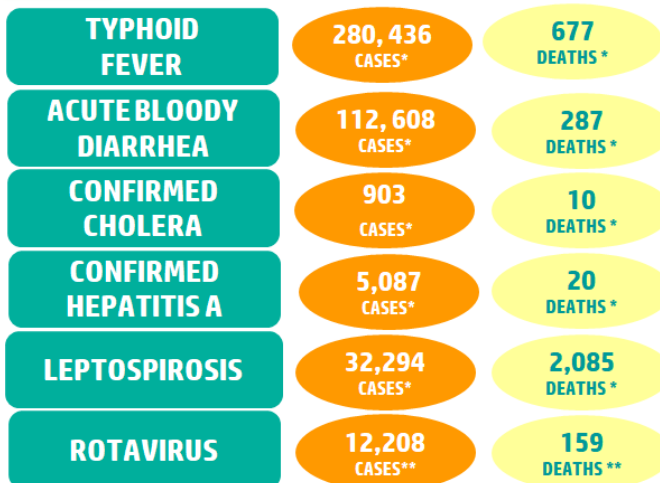
Source: NDRRMC

Component 5 cont.

Source: Department of Health



WATER-RELATED DISEASES

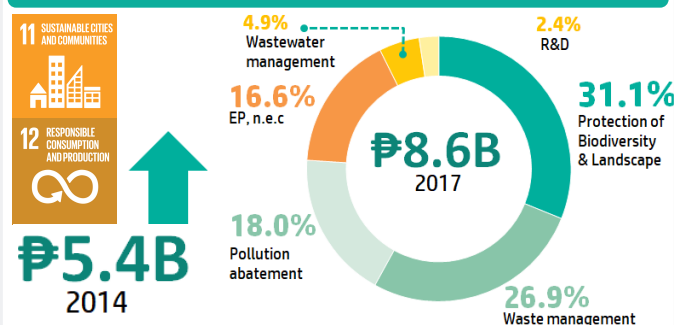


*total from 2008 to 2017

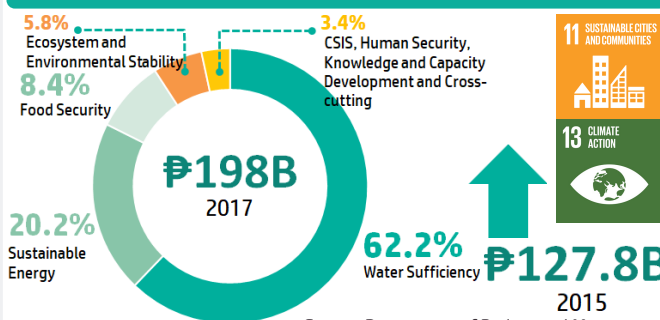
**total from 2015 to 2017

Component 6: Environmental Protection, Management and Engagement

GOVERNMENT ENVIRONMENTAL PROTECTION EXPENDITURE



GOVERNMENT CLIMATE CHANGE EXPENDITURE



Source: Department of Budget and Management

COMPENDIUM OF PHILIPPINE ENVIRONMENT STATISTICS 2008-2017



The Compendium of Philippine Environment Statistics (CPES) is a biennial compilation of statistical information collected from data produced by various government agencies and from data available in different statistical publications. It is as an adoption of the UN Framework for the Development of Environment Statistics (FDES) 2013.

Framework for the Development of Environment Statistics

The Framework for the Development of Environment Statistics (FDES 2013) is a flexible, multi-purpose conceptual and statistical framework that marks out the scope of environment statistics and provides an organizing structure to guide the collection and compilation of environment statistics at the national level. It brings together data from various relevant subject areas and sources.

Component 5: Human Settlements and Environmental Health



HOUSEHOLDS WITH SANITATION FACILITY, 2017



VECTOR-BORNE DISEASES



***total from 2016 to 2017

Source: Department of Health

HOUSEHOLDS WITH ACCESS TO WATER SUPPLY BY LEVEL, 2017

LEVEL 1
5.0 MILLION
point source has a reservoir without distribution system

LEVEL 2
2.7 MILLION
communal faucet system has a reservoir with distribution system but has a shared water outlet

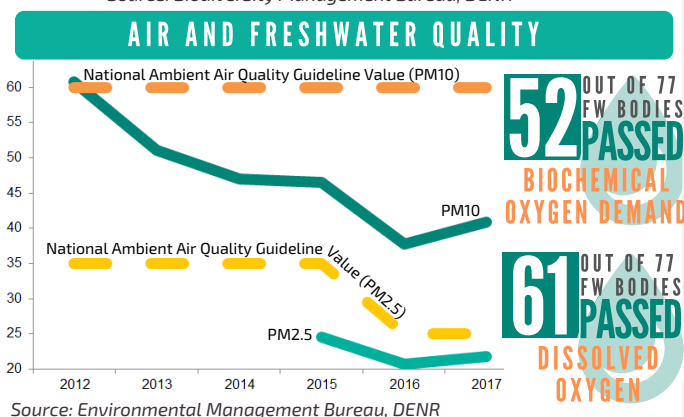
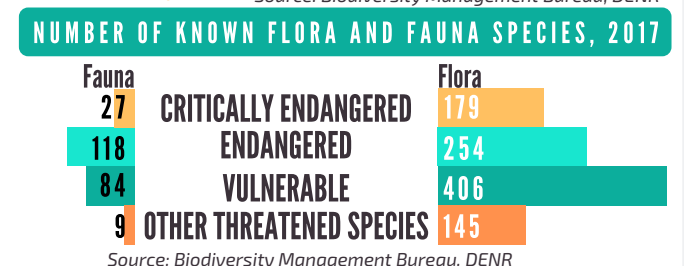
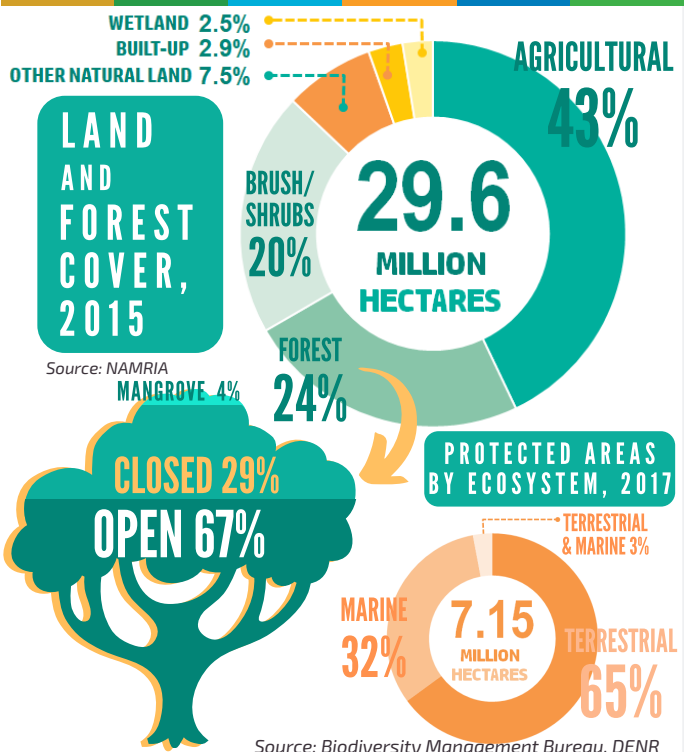
LEVEL 3
10.6 MILLION
individual house has a reservoir with distribution system and independent household taps



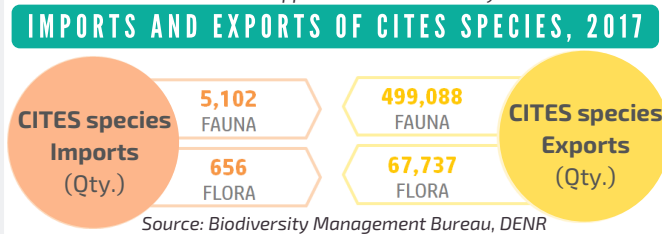
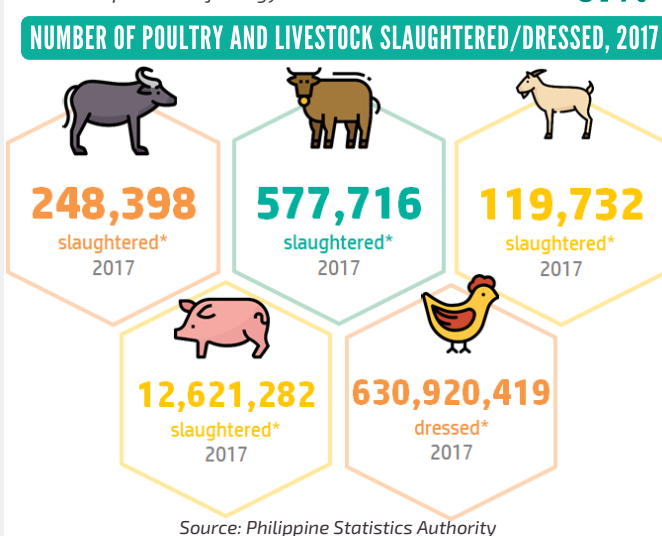
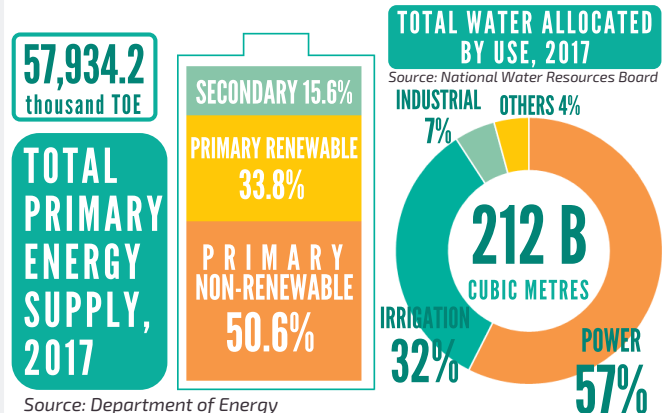
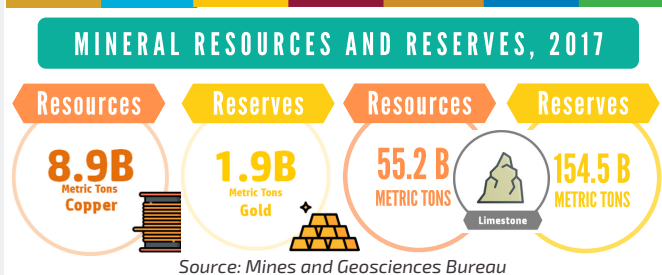
AIRBORNE-RELATED DISEASE

MEASLES
93,154 CASES*
500 DEATHS*

Component 1: Environmental Conditions and Quality



Component 2: Environmental Resources and their Use



Component 3: Residuals

