



2020 ANNUAL SURVEY OF PHILIPPINE BUSINESS AND INDUSTRY



Manufacturing Section

Final Results for All Establishments

This section includes the physical or chemical transformation of materials, substances, or components into new products. Substantial alteration, renovation, or reconstruction of goods are generally considered as manufacturing.

Total Number of Establishments

22,083
establishments



Average Employment per Establishment

54 workers per establishment



Total Employment

1,194,632
workers



98.6%
paid employees



1.4%
working owners and
unpaid workers



Total Compensation

PhP 334.57
billion



Average Annual Compensation

PhP 284,151
per paid employee



Total Revenue

PhP 5.07
trillion



1.12
Revenue per
Expense Ratio

For every peso spent, a corresponding revenue of PhP 1.12 was generated.

Total Expense

PhP 4.51
trillion



Mblains

Manufacturing

Leading Industry Groups

Establishment



6,266 establishments

Manufacture of other food products



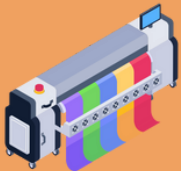
2,909 establishments

Manufacture of beverages



1,908 establishments

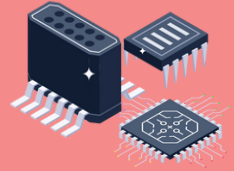
Printing and service activities related to printing



Employment

155,600 workers

Manufacture of electronic components



130,613 workers

Manufacture of other food products



92,603 workers

Manufacture of parts and accessories for motor vehicles

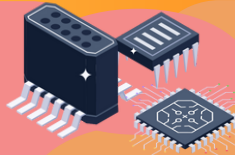


Revenue



PhP **641.24** billion

Manufacture of electronic components



PhP **410.88** billion

Manufacture of other food products



PhP **385.05** billion

Manufacture of beverages



Expense



PhP **589.93** billion

PhP **362.94** billion

PhP **332.36** billion

