



2020 ANNUAL SURVEY OF PHILIPPINE BUSINESS AND INDUSTRY ECONOMY-WIDE

Final Results



ASPBI

It is one of the designated statistical activities of the Philippine Statistics Authority (PSA). Data collected from the survey provide information on the levels, structure, performance and trends of economic activities of the formal sector in the entire country for the year 2020.



**Total Number of
Establishments**

237,367

Leading Sections in terms of Number of Establishments



**Wholesale and Retail Trade;
Repair of Motor Vehicles and
Motorcycles**

91,679



**Financial and Insurance
Activities**

36,576



**Accommodation and Food
Service Activities**

28,838

Total Employment

6,066,274
workers

**Average Number of Workers
per Establishment**



26

99.0% paid employees

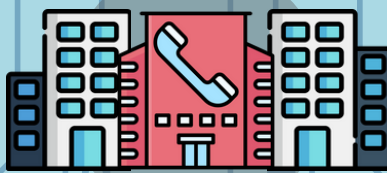
1.0% working owners and unpaid workers

Leading Sections in terms of Total Employment



Manufacturing

1,194,632
workers



**Administrative and Support
Service Activities**

1,145,480
workers



**Wholesale and Retail Trade;
Repair of Motor Vehicles and
Motorcycles**

1,090,292
workers

Total Compensation



PhP **1.90**
trillion

Average Annual Compensation



PhP **317,020**
per paid employee

Total Revenue

PhP **18.70** trillion

Total Expense

PhP **16.77** trillion

Leading Sections in terms of Revenue and Expense

PhP **5.51** trillion

Wholesale and Retail
Trade; Repair of Motor
Vehicles and Motorcycles



PhP **5.23** trillion

Wholesale and Retail
Trade; Repair of Motor
Vehicles and Motorcycles

PhP **5.07** trillion

Manufacturing



PhP **4.51** trillion

Manufacturing

PhP **2.00** trillion

Financial and Insurance
Activities



PhP **1.49** trillion

Financial and Insurance
Activities



Revenue per Expense Ratio

1.11

This indicates that for
every peso spent, a
corresponding revenue of
PhP 1.11 was generated.

McLaurin

22 Nov 2023

FOR: DNS DIVINA GRACIA L. DEL PRADO, PhD.

