



IN ESTABLISHMENTS WITH 20 OR MORE WORKERS

TOTAL EMPLOYMENT

in **34,543** ESTABLISHMENTS
NATIONWIDE, AS OF JUNE 2020

5,321,630

4.8% ↑
2018 EMPLOYMENT
(5,077,410)

EMPLOYMENT BY SECTOR

2.9% **26.5%** **70.6%**



AGRICULTURE,
FORESTRY,
AND FISHING

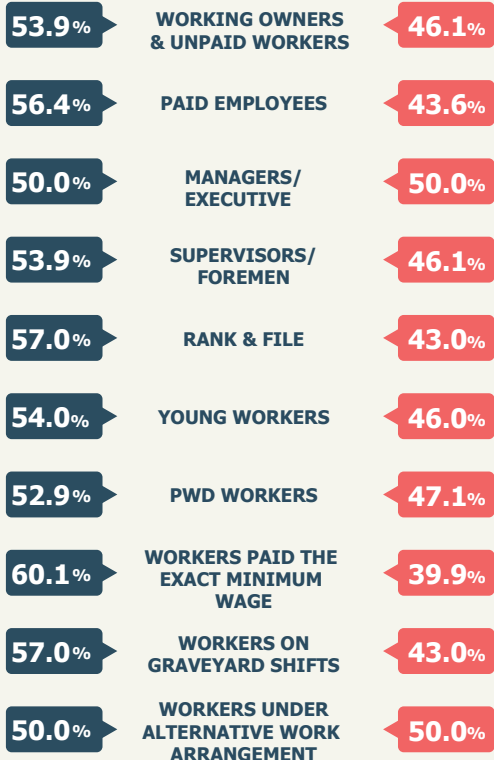
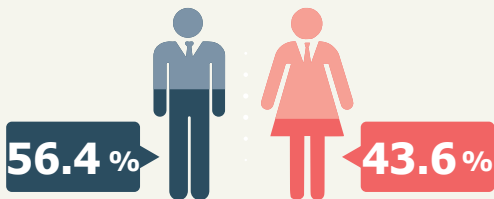


INDUSTRY

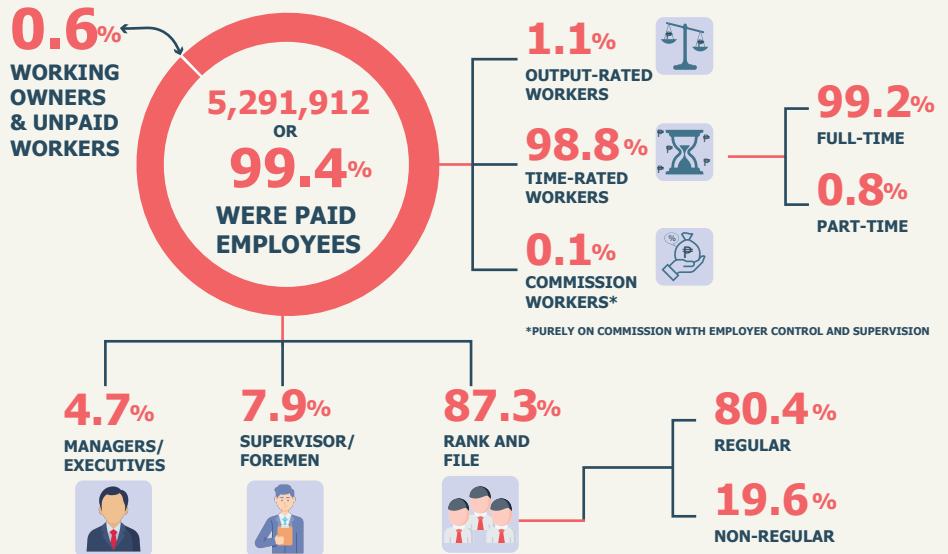


SERVICES

EMPLOYMENT BY SEX



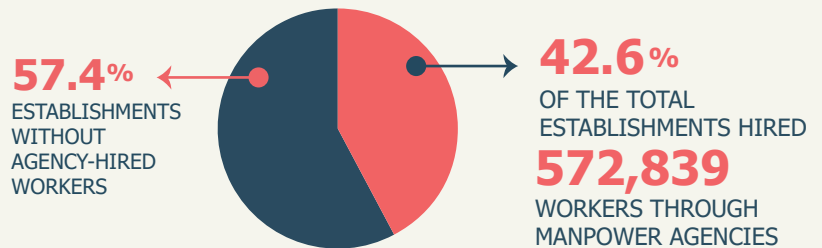
EMPLOYMENT BY CATEGORY OF WORKERS



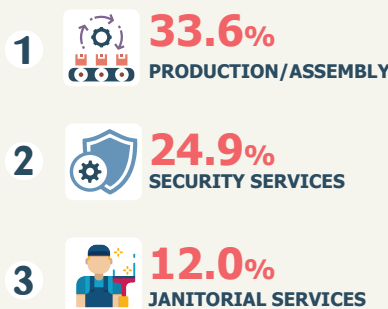
EMPLOYMENT OF SPECIFIC GROUP OF WORKERS



AGENCY-HIRED WORKERS



TOP 3 PROCESSES CONTRACTED OUT



TOP 3 INDUSTRIES AS TO NUMBER OF AGENCY-HIRED WORKERS

