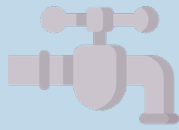


Sustainable tourism refers to the sustainable balance among the economic, environmental, and socio-cultural aspects of tourism development to ensure long-term gains and benefits to all stakeholders. -UNWTO

AVERAGE WATER CONSUMPTION OF TOURISM, 2012-2019



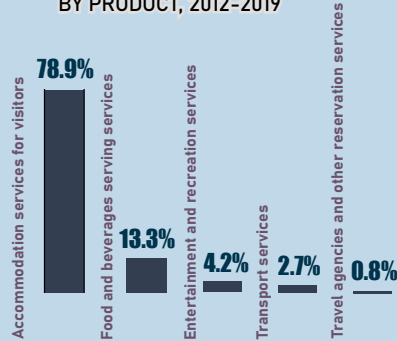
440.99
million cubic meters

14.8%

AVERAGE SHARE OF TOURISM TO TOTAL WATER CONSUMPTION OF THE ECONOMY 2012-2019

Details may not add up to 100% due to rounding

AVERAGE PERCENT SHARE TO TOTAL WATER CONSUMPTION OF TOURISM BY PRODUCT, 2012-2019

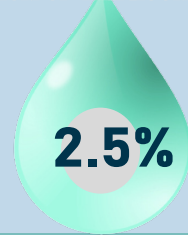


WATER CONSUMPTION

WATER CONSUMPTION OF TOURISM IN 2020

109.62 million cubic meters

SHARE OF TOURISM TO TOTAL WATER CONSUMPTION OF THE ECONOMY IN 2020

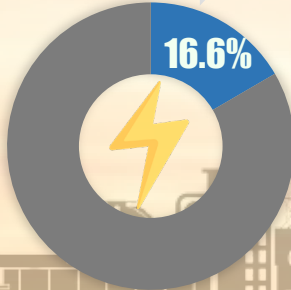


ENERGY CONSUMPTION

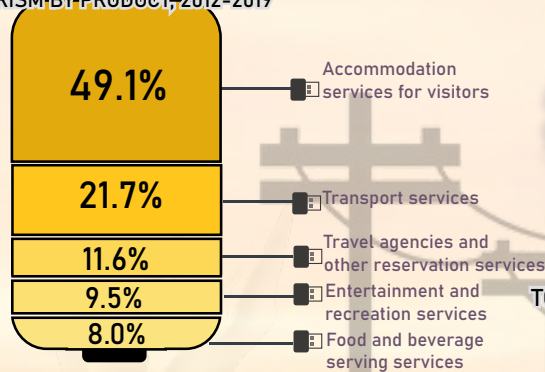
AVERAGE ENERGY CONSUMPTION OF TOURISM, 2012-2019



AVERAGE SHARE OF TOURISM TO TOTAL ENERGY CONSUMPTION OF THE ECONOMY, 2012-2019



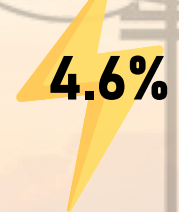
AVERAGE PERCENT SHARE TO TOTAL ENERGY CONSUMPTION OF TOURISM BY PRODUCT, 2012-2019



ENERGY CONSUMPTION OF TOURISM IN 2020

3,533.24
KTOE

SHARE OF TOURISM TO TOTAL ENERGY CONSUMPTION OF THE ECONOMY IN 2020



KTOE - Kilotonne of Oil Equivalent

Details may not add up to 100% due to rounding

AVERAGE CO₂ EMISSION OF TOURISM 2012-2019

13,292.94
Gigagrams CO₂



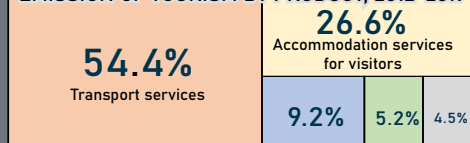
CO₂ - Carbon Dioxide

4,475.62

CARBON DIOXIDE EMISSION OF TOURISM IN 2020

CARBON DIOXIDE EMISSION

AVERAGE PERCENT SHARE TO CO₂ EMISSION OF TOURISM BY PRODUCT, 2012-2019



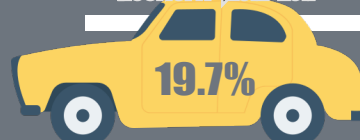
AVERAGE PERCENT SHARE TO TOTAL CO₂ EMISSION OF TOURISM, 2012-2019

65.2% **34.8%**

Petroleum and other fuel products Electricity consumption

7.7%
SHARE OF TOURISM TO TOTAL CO₂ EMISSION OF THE ECONOMY IN 2020

AVERAGE SHARE OF TOURISM TO TOTAL CO₂ EMISSION OF THE ECONOMY, 2012-2019



CO₂

**Resulting only from the use of electricity and petroleum and other fuel products*

*Details may not add up to 100% due to rounding
Vector graphics sourced from: flaticon.com*