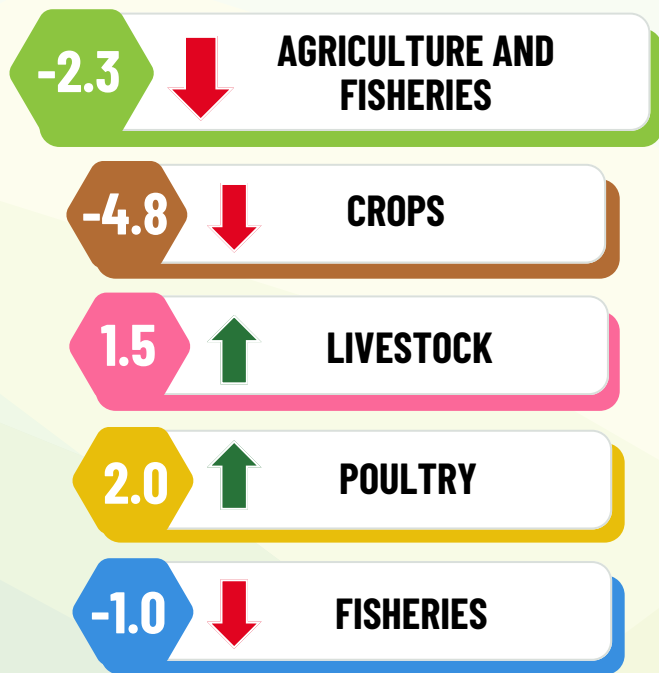


SEASONALLY ADJUSTED VALUE OF PRODUCTION IN AGRICULTURE AND FISHERIES, SECOND QUARTER 2024

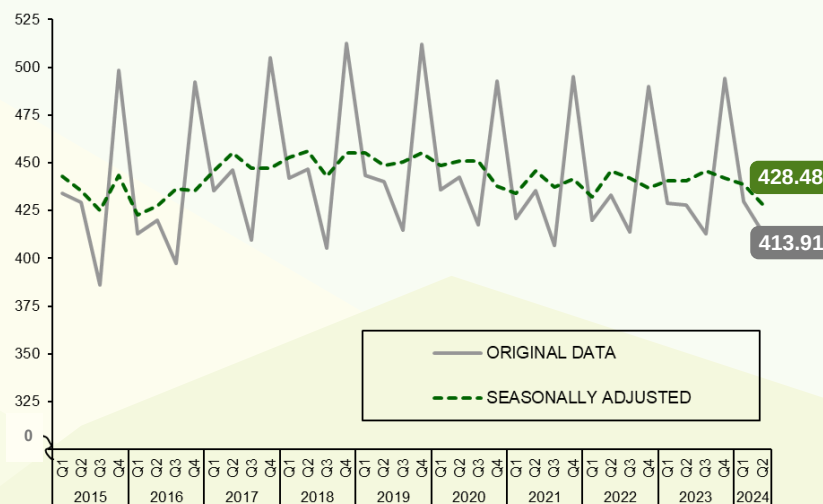
At Constant 2018 Prices

The Seasonally Adjusted Value of Production in Agriculture and Fisheries presents the performance of agriculture and fisheries without the influence of predictable seasonal patterns (e.g., holidays, vacation season, opening of classes, weather changes, and other calendar related effects).

Quarter-on-Quarter Percent Change Q1 2024 to Q2 2024 (in percent)



Original Data vs Seasonally Adjusted Value of Production in Agriculture and Fisheries Q1 2024 to Q2 2024 (in Billion PhP)



Contribution to Quarter-on-Quarter Percent Change by Subsector Q1 2024 to Q2 2024 in percent



Note: Details may not add up to total due to rounding.