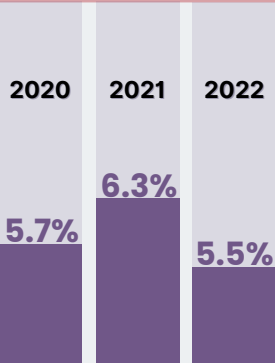


## TOTAL HEALTH EXPENDITURE TO GDP

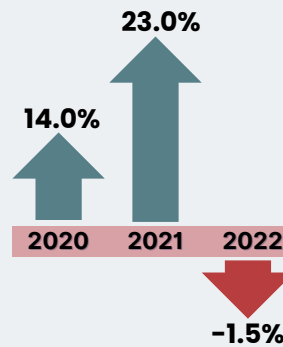
Share



The share of Total Health Expenditure (THE) to the Gross Domestic Product (GDP) at current prices was **5.5 percent in 2022**.

## CURRENT HEALTH EXPENDITURE

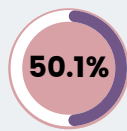
Growth Rate



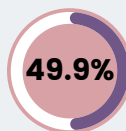
The country's Current Health Expenditure (CHE) reached **PhP 1.12 trillion in 2022**, -1.5 percent lower compared with PhP 1.14 trillion in 2021.

## HEALTH CAPITAL FORMATION EXPENDITURE BY TYPE OF ASSET

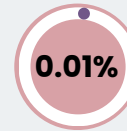
Level and Share to Health Capital Formation Expenditure



**Infrastructure**  
PhP 39.54 billion



**Machinery and Equipment**  
PhP 39.45 billion



**Intellectual Property Products**  
PhP 6.20 million

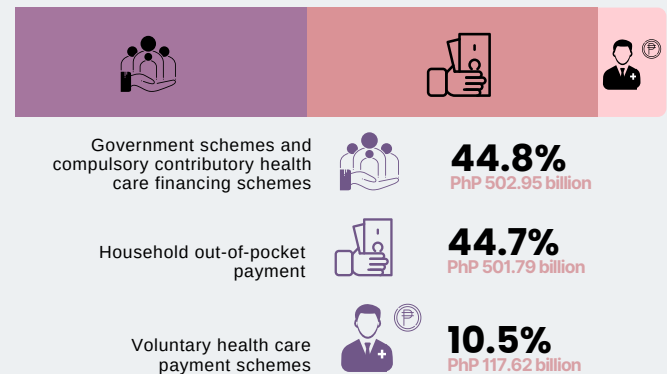
## CURRENT HEALTH EXPENDITURE BY HEALTH CARE FUNCTION

Level and Share to CHE



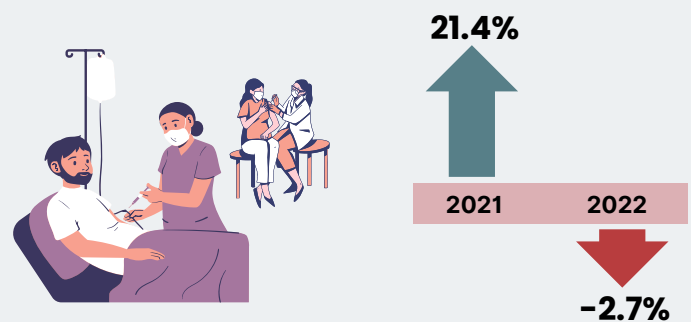
## CURRENT HEALTH EXPENDITURE BY FINANCING SCHEME

Level and Share to CHE



## CURRENT HEALTH EXPENDITURE PER CAPITA AND GROWTH RATE

On average, every Filipino spent **PhP 10,059.49** for healthcare goods and services in 2022.



**Notes:**  
Shares may not add up to 100% due to rounding.  
Gross Domestic Product (GDP) is at current prices.  
Vector designs are sourced from: canva.com

## TOP 3 HEALTH CARE PROVIDERS

Growth Rate

**-0.6%** ↓



Hospitals

Level and Share to CHE

PhP 436.73 billion  
38.9%

**5.4%** ↑



Retailers and Other providers of medical goods

PhP 335.54 billion  
29.9%

**-20.9%** ↓



Providers of health care system administration and financing

PhP 150.31 billion  
13.4%