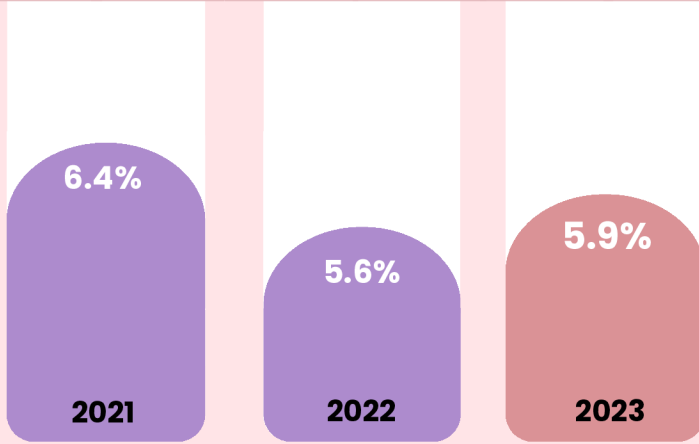
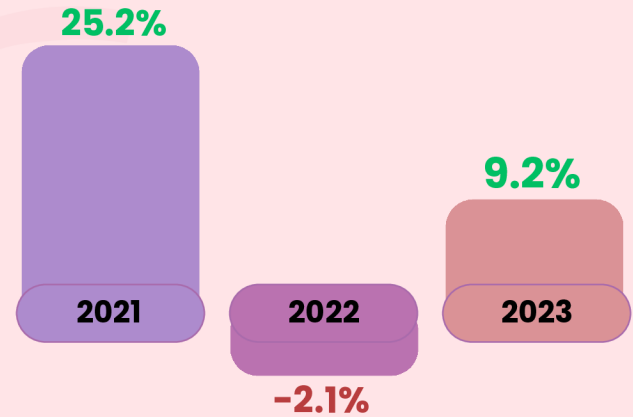


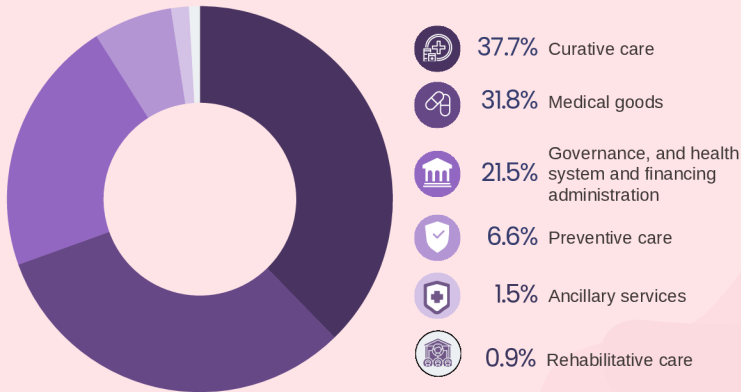
SHARE OF TOTAL HEALTH EXPENDITURE TO GROSS DOMESTIC PRODUCT



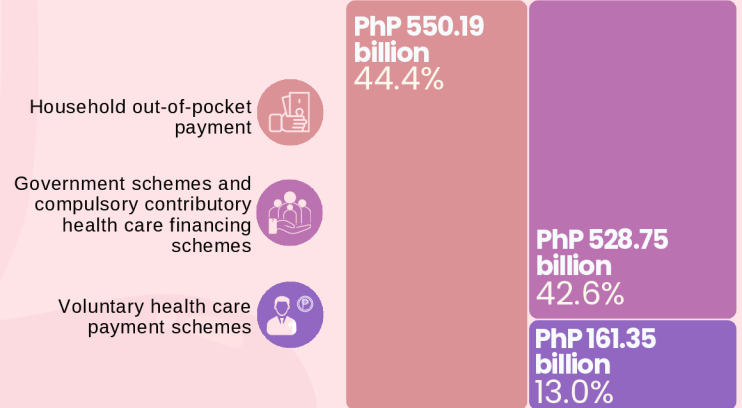
GROWTH RATE OF CURRENT HEALTH EXPENDITURE



PERCENT SHARE OF CURRENT HEALTH EXPENDITURE BY HEALTH CARE FUNCTION



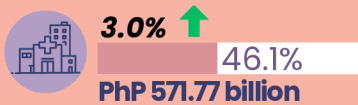
LEVEL AND PERCENT SHARE OF CURRENT HEALTH EXPENDITURE BY HEALTH CARE FINANCING SCHEME



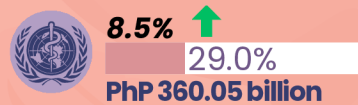
TOP 3 HEALTH CARE PROVIDERS

Growth Rate, Share, and Level

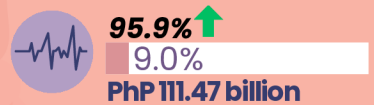
Hospitals



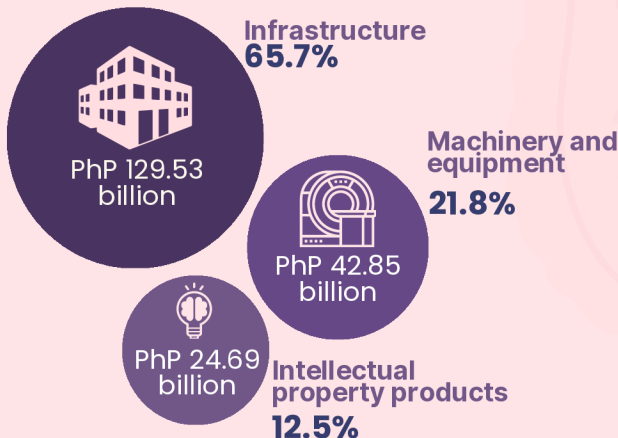
Retailers and other providers of medical goods



Providers of health care system administration and financing



LEVEL AND PERCENT SHARE OF HEALTH CAPITAL FORMATION



CURRENT HEALTH EXPENDITURE PER CAPITA AND GROWTH RATE



On average, every Filipino spent higher by **8.3 percent** in 2023 for health care goods and services as compared to 2022.

COFm

