



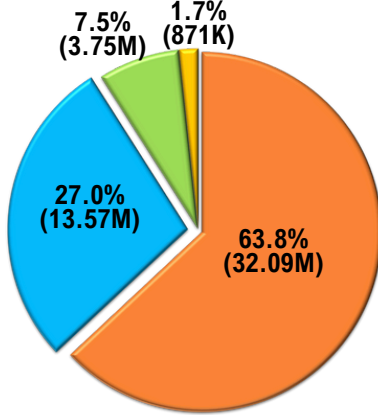
Number and Percent Distribution of Employed Persons by Class of Workers: JUN 2024^P

Wage and salary workers

Self-employed without any paid employee

Worked without pay in own family-operated farm or business (Unpaid family worker)

Employer in own family-operated farm or business

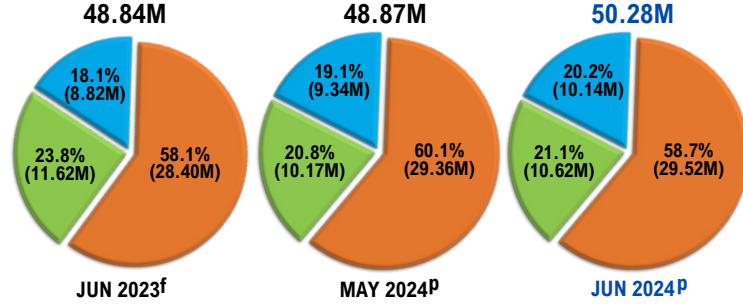


Number and Percent Distribution of Employed Persons by Sector

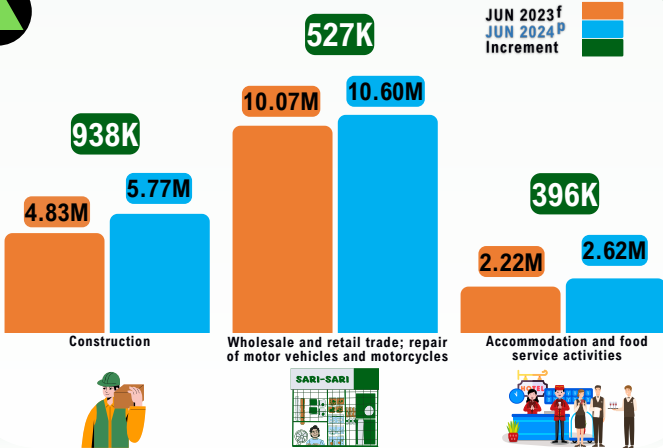
Services Sector

Agriculture Sector

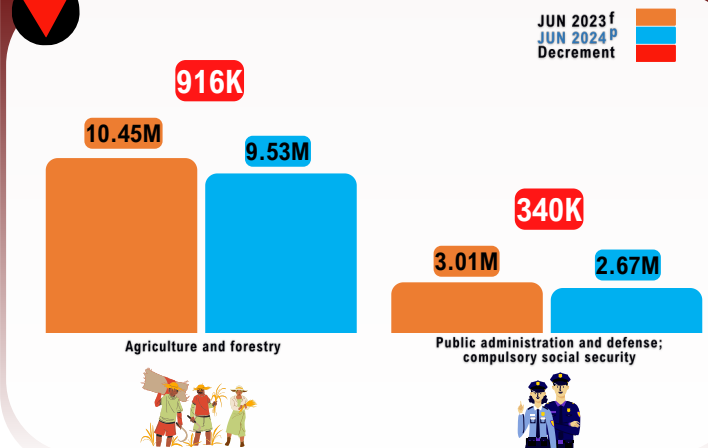
Industry Sector



Top 3 Major Industries with Largest Increase in Employment: Year-on-Year Comparison



Top 2 Major Industries with Largest Drop in Employment: Year-on-Year Comparison



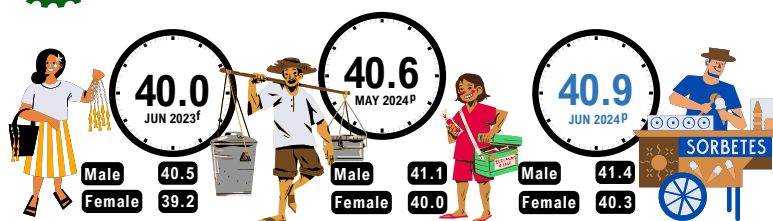
Percent Distribution of Employed Persons by Hours Worked in a Week

	JUN 2023 ^f	MAY 2024 ^P	JUN 2024 ^P
Less than 40 hours	33.8	31.5	29.8
Worked 40 hours and over	64.9	67.9	69.2
With a job, not at work	1.3	0.6	1.0

Percent Distribution of Employed Persons by Major Occupation Group

JUN 2023 ^f	JUN 2024 ^P	Major Occupation Group
2.9	2.7	Managers
5.7	5.1	Professionals
4.1	3.7	Technicians and associate professionals
7.1	7.9	Clerical support workers
22.9	24.1	Service and sales workers
12.0	10.9	Skilled agricultural, forestry, and fishery workers
6.8	7.2	Craft and related trades workers
8.2	8.7	Plant and machine operators and assemblers
30.2	29.5	Elementary occupations
0.2	0.2	Armed forces occupations

Mean Hours Worked in a Week



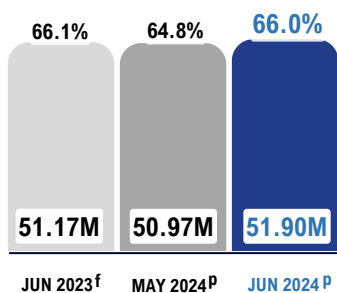
Notes:

- p - Estimates for May 2024 and June 2024 are preliminary and may change.
- f - Estimates for June 2023 are final.
- All estimates used the 2015 POPCEN-based Population Projection.
- Details may not add up to totals due to rounding.
- "M" refers to Million and "K" refers to Thousand.
- Icons made by canva.com

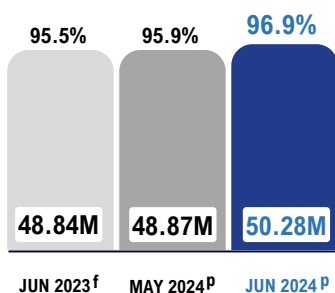


Key Employment Indicators of Total Population 15 Years Old and Over, PHILIPPINES

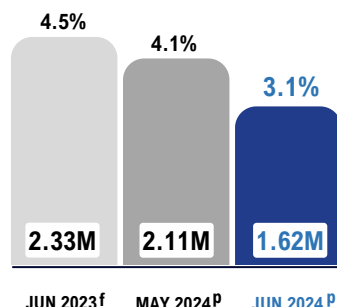
Number of Persons in the Labor Force and Labor Force Participation Rates



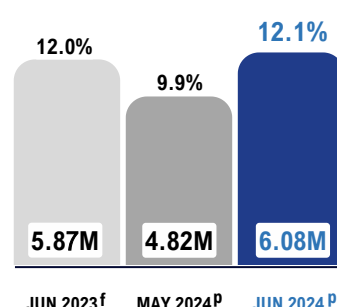
Number of Employed Persons and Employment Rates



Number of Unemployed Persons and Unemployment Rates

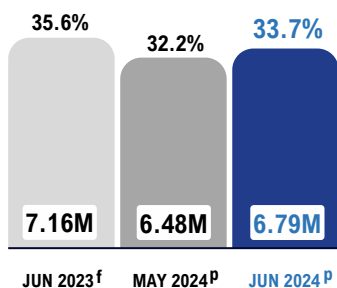


Number of Underemployed Persons and Underemployment Rates

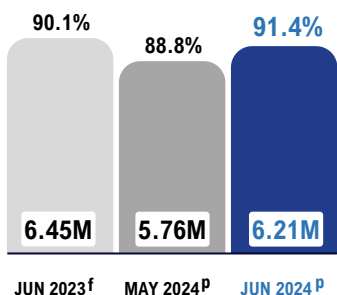


Youth 15 to 24 Years Old Key Employment Indicators, PHILIPPINES

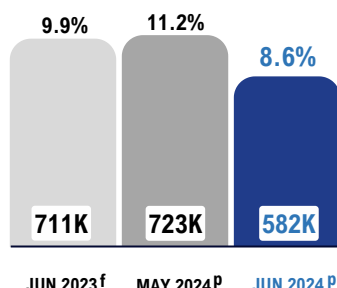
Number of Youth in the Labor Force and Youth Labor Force Participation Rates



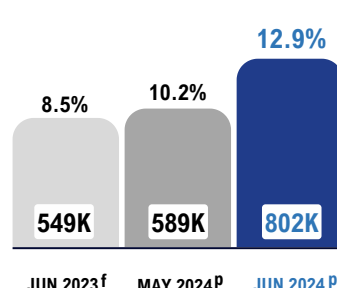
Number of Employed Youth and Youth Employment Rates



Number of Unemployed Youth and Youth Unemployment Rates



Number of Underemployed Youth and Youth Underemployment Rates



Employment Status by Sex: JUN 2024^P

MALE

76.0%
97.3%
2.7%
13.4%

Labor Force Participation Rate

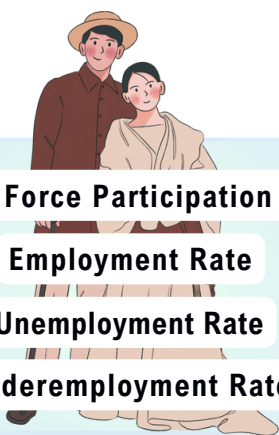
Employment Rate

Unemployment Rate

Underemployment Rate

FEMALE

55.8%
96.3%
3.7%
10.3%



Notes:

- p - Estimates for May 2024 and June 2024 are preliminary and may change.
- f - Estimates for June 2023 are final.
- All estimates used the 2015 POPCEN-based Population Projection.
- "M" refers to Million and "K" refers to Thousand.
- Details may not add up to totals due to rounding.
- Icons made in canva.com

CSM