



2022 ANNUAL SURVEY OF PHILIPPINE BUSINESS AND INDUSTRY

Financial and Insurance Activities Section

Preliminary Results



BAGONG PILIPINAS

Financial and insurance activities section includes financial service activities, except insurance and pension funding; insurance, reinsurance and pension funding, except compulsory social security; and activities auxiliary to financial service and insurance activities.

42,887

establishments

in the formal sector of the economy were engaged in financial and insurance activities section.

TOTAL NUMBER OF ESTABLISHMENTS




TOTAL EMPLOYMENT

373,866

workers

were recorded for the section in 2022. Of the total employment, **99.3 percent** were **PAID EMPLOYEES**, while the rest were **WORKING OWNERS AND UNPAID WORKERS**.

 **FEMALE**
61.3%
229,083 workers

 **MALE**
38.7%
144,783 workers

TOTAL COMPENSATION

PhP 245.46

billion

total compensation paid by the section. This translates to an

AVERAGE ANNUAL COMPENSATION

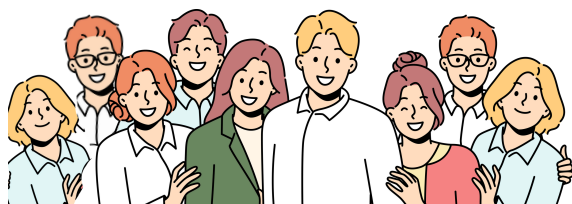
PhP 660,978

per paid employee



9

AVERAGE NUMBER OF WORKERS PER ESTABLISHMENT



Financial and Insurance Activities Section

TOTAL REVENUE

PhP **2.05** trillion

TOTAL EXPENSE

PhP **1.40** trillion

Top 3 Industry Groups in terms of Total Revenue



Monetary
Intermediation
PhP **1,003.50**
billion



Insurance
PhP **466.82**
billion



Activities of
Holding Companies
PhP **289.75**
billion

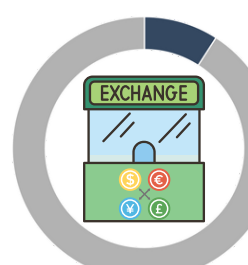
Top 3 Industry Groups in terms of Total Expense



Monetary
Intermediation
PhP **676.09**
billion



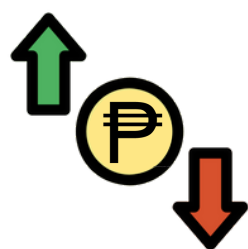
Insurance
PhP **379.01**
billion



Other Financial
Service Activities, except
Insurance and Pension
Funding Activities
PhP **127.02**
billion

REVENUE PER EXPENSE RATIO

1.46



For every peso spent in the business operations, a corresponding revenue of PhP 1.46 was generated.

SALES FROM E-COMMERCE TRANSACTIONS

PhP **9.87**
billion



E-commerce is the sale or purchase of goods or services conducted over the internet, but the payment and delivery of the good or service may be conducted or offline.

