



**VOLUME OF PRODUCTION**  
In '000 metric tons

**GROWTH RATE**

**FARMGATE PRICE**

**GROWTH RATE**

	Carabao	Cattle	Goat	Hog	Dairy	Chicken	Chicken Egg	Duck	Duck Egg
VOLUME OF PRODUCTION	33.57	61.54	16.36	418.40	7.51	463.12	185.58	6.29	15.60
GROWTH RATE	-3.9%	0.9%	-6.7%	3.0%	22.2%	6.9%	10.5%	-7.5%	11.5%
FARMGATE PRICE	PHP 163.72	PHP 161.25	PHP 207.00	PHP 181.93	PHP 54.99	PHP 108.81	PHP 5.43	PHP 101.76	PHP 7.39
GROWTH RATE	30.6%	10.0%	22.1%	10.5%	4.1%	8.1%	-1.3%	17.5%	5.8%

**SLAUGHTERED & DRESSED**  
In Heads/Birds<sup>4/</sup>

**GROWTH RATE**

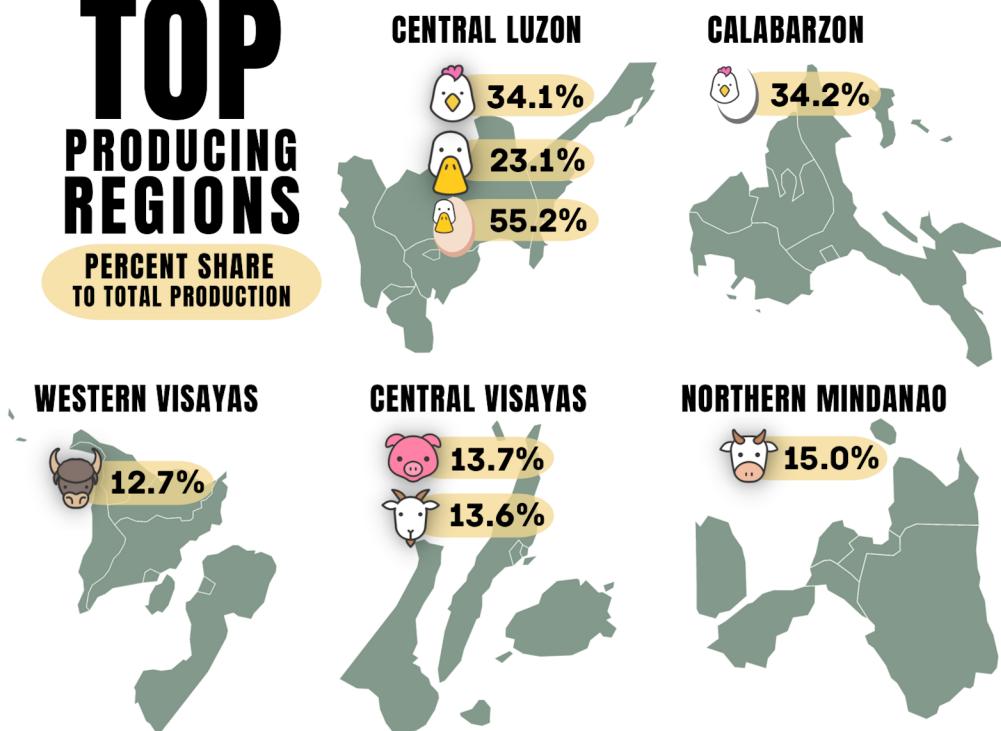
SLAUGHTERED & DRESSED	63,950	130,375	17,369	2,407,009	..	209,459,313	..	..	..
GROWTH RATE	8.9%	3.4%	3.3%	6.7%	..	13.4%	..	..	..

### INVENTORY IN MILLION AS OF 30 JUNE 2022

Carabao	2.74
Cattle	2.58
Goat	3.90
Hog	9.94
Chicken	186.36
Native/Improved	81.76
Broiler	60.40
Layer	44.20
Duck	13.57

### TOP PRODUCING REGIONS

PERCENT SHARE TO TOTAL PRODUCTION



1/ Production and farmgate prices are measured in liveweight equivalent, except for dairy and eggs. All animal types are sold per kilogram while dairy is per liter and eggs are per pieces.

2/ Farmgate prices of livestock animals are based on Backyard Livestock and Poultry Survey (BLPS), while farmgate prices for poultry commodities were taken from Commercial Livestock and Poultry Survey (CLPS). Dairy price is based on prices of carabao, cattle and goat milk. All farmgate prices are based on weighted average.

3/ Number of slaughtered/ dressed animals were sourced from the National Meat Inspection Service (NMIS) and Local Government Units (LGUs) administrative records.

4/ The following are used as unit of measure for inventory and slaughter: Heads for livestock and birds for poultry commodities.

p - preliminary

.. - Data not applicable

For Technical Inquiries:

lpsd.psa@gmail.com

Visit our website:

psa.gov.ph  
openstat.psa.gov.ph

Like us on Facebook:

/PhilippineStatisticsAuthority

Follow us on Twitter:

@PSAgovph

