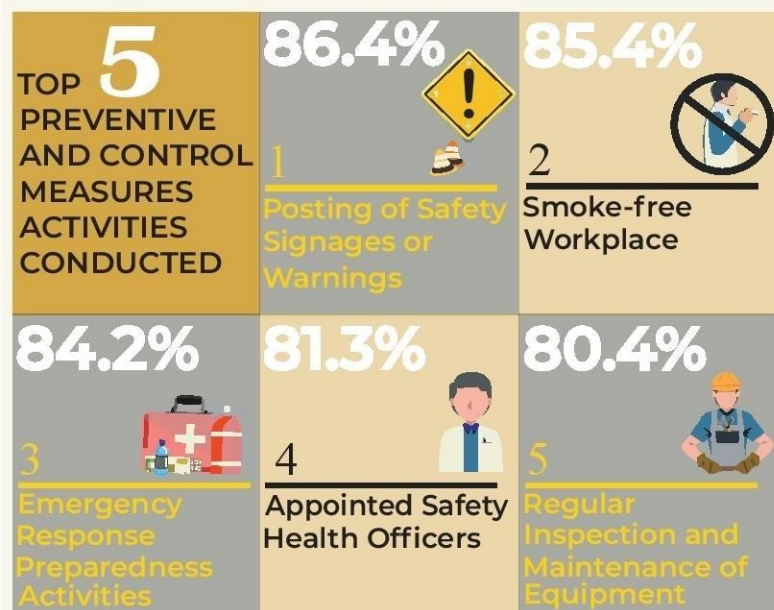


2017/2018 INTEGRATED SURVEY ON LABOR AND EMPLOYMENT (ISLE) OCCUPATIONAL SAFETY AND HEALTH PRACTICES : 2017



TOP 5 OCCUPATIONAL SAFETY & HEALTH POLICIES/PROGRAMS



98.1%

Establishments Conducted Preventive Control and Measures Activities

95.3%

Establishments Implemented Occupational Safety and Health Policies & Programs

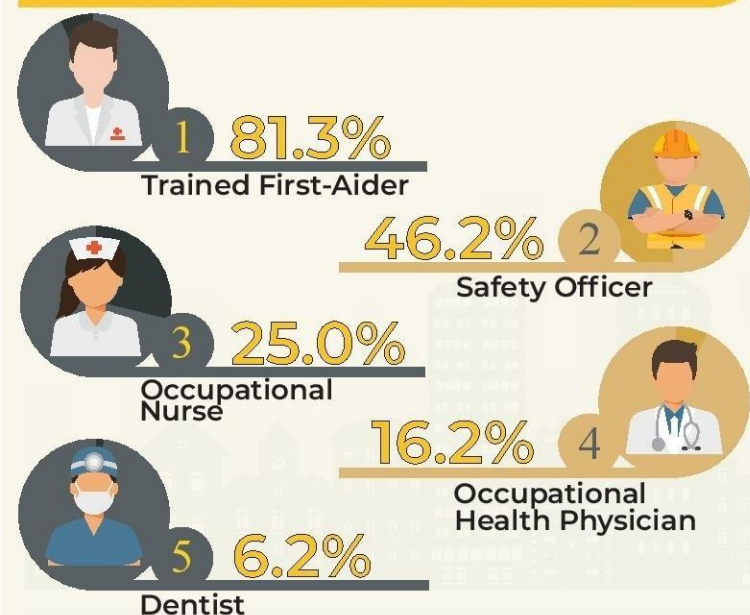
69.1%

Establishments Avail OSH-Related Trainings and Seminars

85.7%

Establishments had Designated Safety and Health Personnel

TOP 5 DESIGNATED HEALTH AND SAFETY PERSONNEL



TOP 3 SECTORS WITH DESIGNATED HEALTH AND SAFETY PERSONNEL

