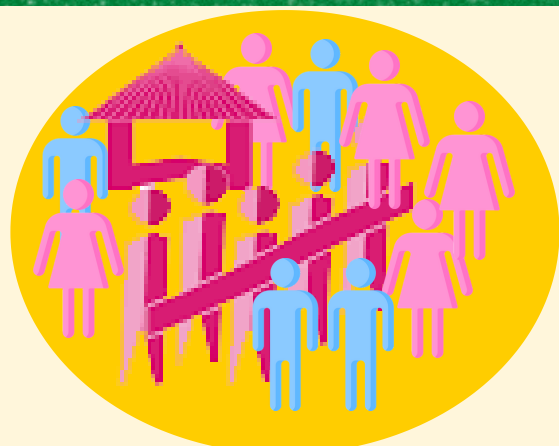


PHILIPPINE LABOR AND EMPLOYMENT INDICATORS

JANUARY 2020 LABOR FORCE SURVEY



POPULATION 15 YEARS OLD AND OVER

**JAN 2020
73.0 MILLION**

**JAN 2019
71.9 MILLION**

LABOR FORCE PARTICIPATION RATE

**JAN 2020
61.7%**

**JAN 2019
60.3%**



EMPLOYMENT RATE

**JAN 2020
94.7%**

**JAN 2019
94.7%**



UNEMPLOYMENT RATE

**JAN 2020
5.3%**

**JAN 2019
5.3%**



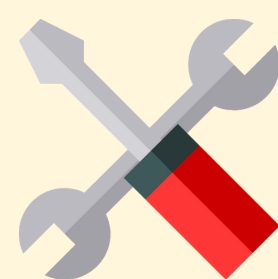
UNDEREMPLOYMENT RATE

**JAN 2020
14.8%**

**JAN 2019
15.4%**



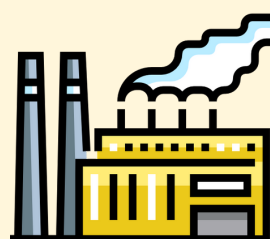
PERCENT DISTRIBUTION OF EMPLOYED PERSONS BY SECTOR



**SERVICES
58.6%**



**AGRICULTURE
22.7%**



**INDUSTRY
18.8%**

67.6% Full-time workers

Employed persons who worked for 40 hours or more per week

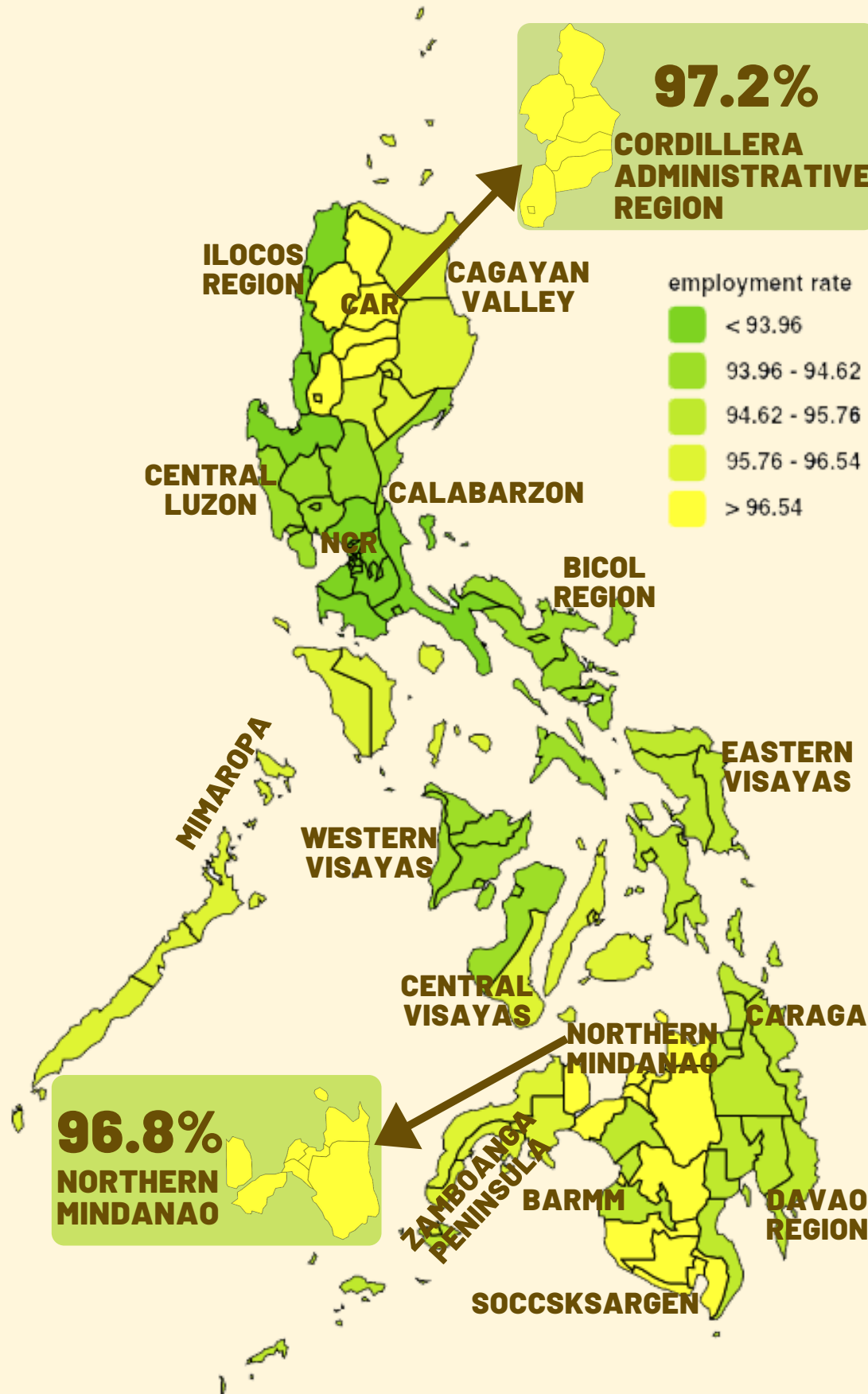
31.6% Part-time workers

Employed persons who worked for less than 40 hours per week

0.8% Those with a job but not at work.

41.3 Hrs. Hours workers worked per week on average.

REGIONS WITH HIGHEST AND LOWEST EMPLOYMENT RATE



PERCENT DISTRIBUTION OF EMPLOYED PERSONS BY CLASS OF WORKER



65.2% WAGE AND SALARY WORKERS

26.2% SELF-EMPLOYED W/O ANY PAID EMPLOYEE

6.2% UNPAID FAMILY WORKER

2.4% EMPLOYER IN OWN FAMILY-OPERATED FARM OR BUSINESS

PERCENT DISTRIBUTION OF EMPLOYED PERSONS BY MAJOR OCCUPATION GROUP

- 27.1% ELEMENTARY OCCUPATIONS**
- 19.9% SERVICE AND SALES WORKERS**
- 11.4% SKILLED AGRICULTURAL, FORESTRY AND FISHERY WORKERS**
- 9.4% MANAGERS**
- 8.1% PLANT AND MACHINE OPERATORS AND ASSEMBLERS**
- 7.6% CRAFT AND RELATED TRADES WORKERS**
- 6.6% CLERICAL SUPPORT WORKERS**
- 5.8% PROFESSIONALS**
- 3.8% TECHNICIANS AND ASSOCIATE PROFESSIONALS**
- 0.2% ARMED FORCES OCCUPATIONS**

Note: Details may not add up to totals due to rounding.

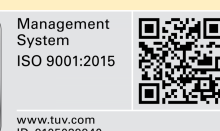
Estimates for January 2020 and January 2019 are based on the 2015 CPH-based Population Projection.

Estimates for January 2020 are preliminary and may change.

ICONS MADE BY FREEPIK FROM WWW.FLATICON.COM



VISIT US ON
WWW.PSA.GOV.PH



FOR TECHNICAL INQUIRIES
IESD.STAFF@PSA.GOV.PH



FOLLOW US ON TWITTER
[@PSAGOVPH](https://twitter.com/PSAGOVPH)



FOLLOW US ON FACEBOOK
PHILIPPINESTATISTICSAUTHORITY