

The Seasonally Adjusted National Accounts of the Philippines (SANA) presents the economic performance of the country without the influence of predictable seasonal patterns (e.g., holidays, vacation season, opening of classes, weather changes, and other calendar related effects).

## Quarter-on-Quarter Percent Change, Q2 to Q3 2023

**GDP 3.3**

Gross Domestic Product

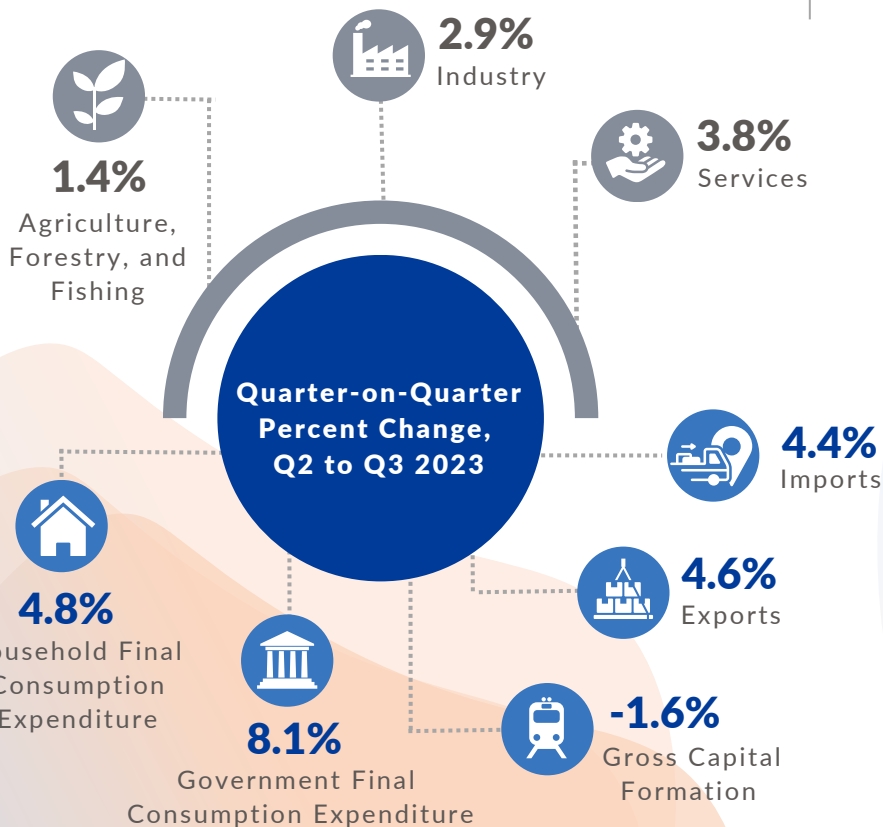
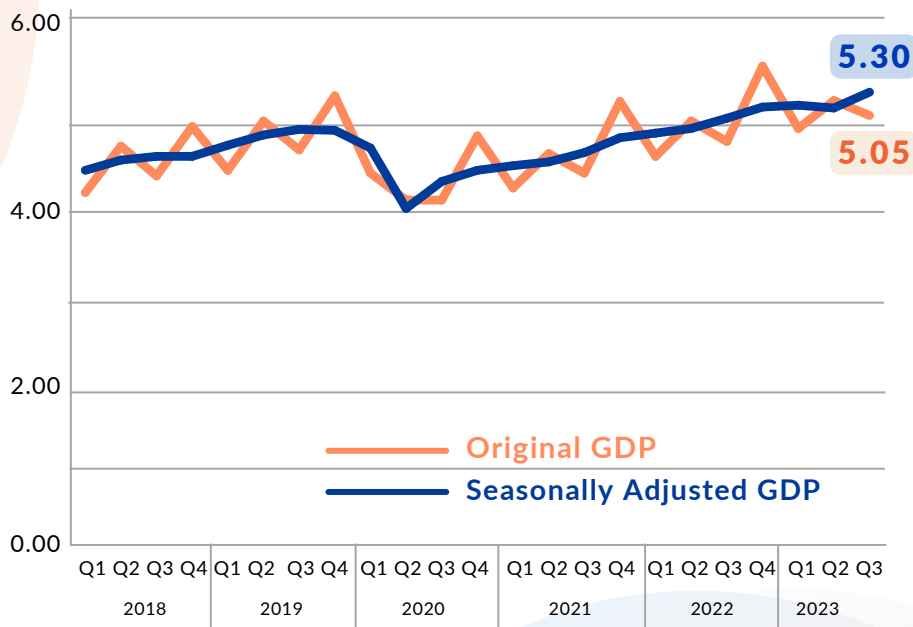
**GNI 5.2**

Gross National Income

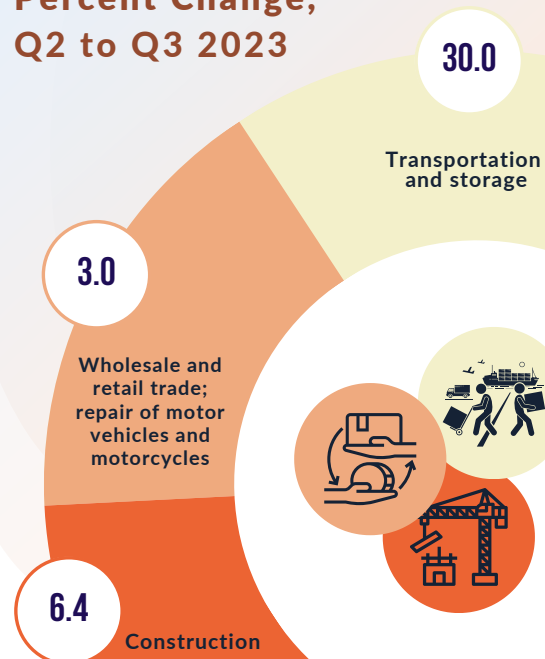
**NPI 24.2**

Net Primary Income

## Original Data vs Seasonally Adjusted Gross Domestic Product, in Trillion Pesos Q1 2018 to Q3 2023



## Top Contributors to the Quarter-on-Quarter Percent Change, Q2 to Q3 2023



### Legend:

● Major Industry ● Major Expenditure Items



For Technical Inquiries:  
eiad.staff@psa.gov.ph /  
pad.staff@psa.gov.ph



Visit us at:  
[www.psa.gov.ph](http://www.psa.gov.ph)



Like us on Facebook:  
/PSAgovph



Follow us on Twitter:  
@PSAgovph



Management System  
ISO 9001:2015

