



ECONOMIC PERFORMANCE OF THE PHILIPPINES

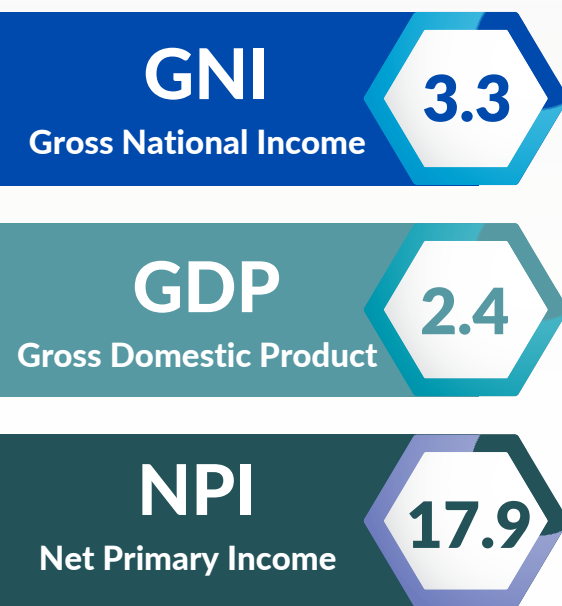
SEASONALLY ADJUSTED, FOURTH QUARTER 2022

At Constant 2018 Prices

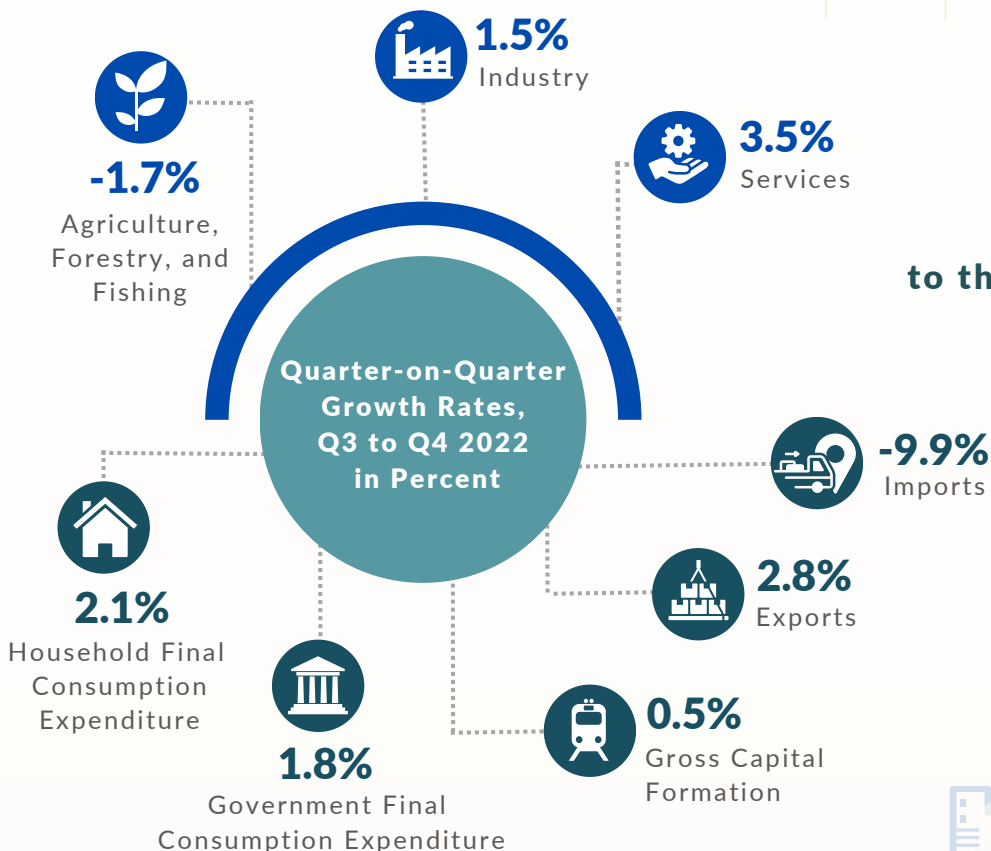
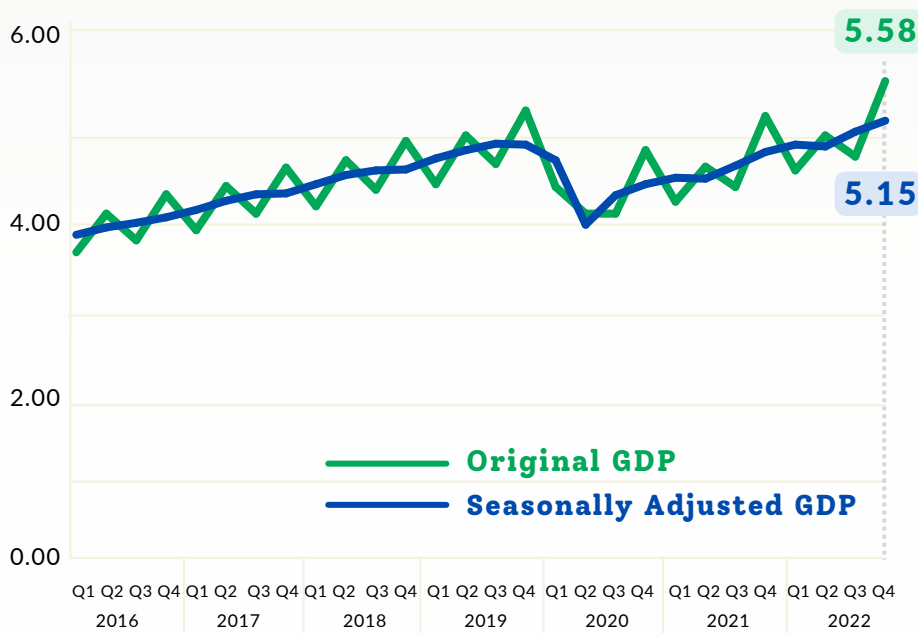
As of January 2023
Reference number: MAS-SANA-01262023

The Seasonally Adjusted National Accounts of the Philippines (SANA) presents the economic performance of the country without the influence of predictable seasonal patterns (e.g., holidays, vacation season, opening of classes, weather changes, and other calendar related effects).

Quarter-on-Quarter Growth Rates, Q3 to Q4 2022, in Percent

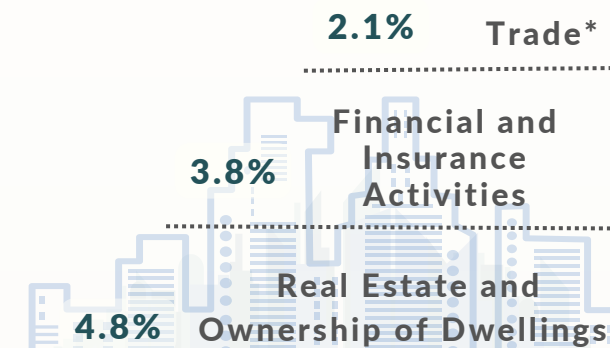


Original Data vs Seasonally Adjusted Gross Domestic Product, in Trillion Pesos Q1 2016 to Q4 2022



Top Contributors to the Quarter-on-Quarter Growth, Growth Rates, In Percent

Q3 to Q4 2022



*Wholesale and retail trade; repair of motor vehicles and motorcycles

Legend:

● Major Industry ● Expenditure Item



For Technical Inquiries:
eiad.staff@psa.gov.ph



Visit us at:
www.psa.gov.ph



Like us on Facebook:
/PSAgovph



Follow us on Twitter:
@PSAgovph