



PERFORMANCE OF PHILIPPINE AGRICULTURE

First Quarter 2020



VALUE OF PRODUCTION IN AGRICULTURE

AT CONSTANT 2018 PRICES
 (GROWTH RATES)



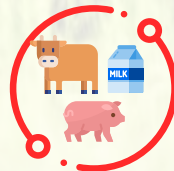
AGRICULTURE
 ↓ 1.2%



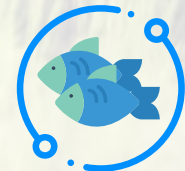
CROPS
 ↓ 2.1%



POULTRY
 ↑ 3.9%



LIVESTOCK
 ↑ 0.5%



FISHERIES
 ↓ 5.2%

VALUE OF PRODUCTION IN AGRICULTURE

AT CURRENT PRICES
 (LEVELS AND GROWTH RATES)

AGRICULTURE **PHP 441.2** ↑ 3.4%
 BILLION

CROPS **PHP 239.4** ↑ 3.6%
 BILLION

LIVESTOCK **PHP 75.7** ↓ 2.3%
 BILLION

POULTRY **PHP 62.9** ↑ 14.4%
 BILLION

FISHERIES **PHP 63.3** ↑ 0.1%
 BILLION

VALUE OF PRODUCTION IN AGRICULTURE

AT CONSTANT 2018 PRICES
 (PERCENTAGE DISTRIBUTION)

