

YOUTH LABOR AND EMPLOYMENT INDICATORS

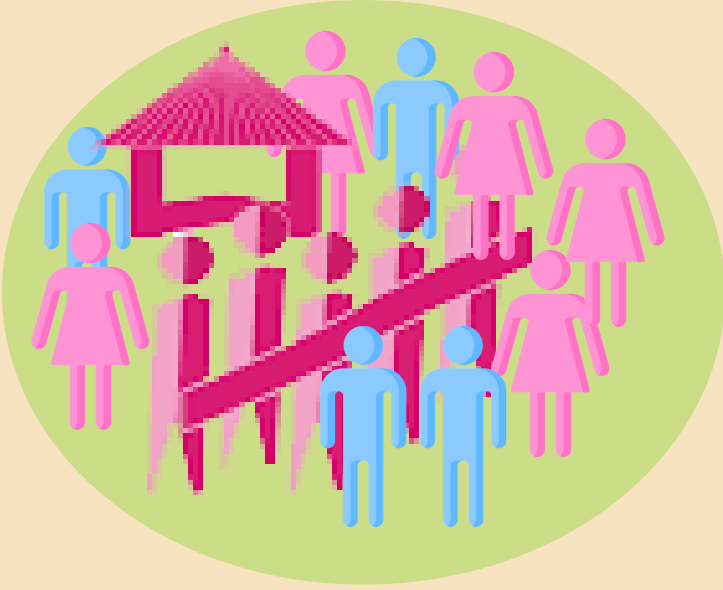
JANUARY 2020 LABOR FORCE SURVEY



YOUTH POPULATION 15-24 YEARS OLD

JAN 2020
19.8 MILLION

JAN 2019
19.7 MILLION



YOUTH LABOR FORCE and PARTICIPATION RATE

JAN 2020
37.4%
(7.43 M)

JAN 2019
35.9%
(7.07 M)



YOUTH EMPLOYMENT

JAN 2020
86.4%
(6.42 M)

JAN 2019
85.8%
(6.06 M)



YOUTH UNDEREMPLOYMENT

JAN 2020
12.5%
(804K)

JAN 2019
14.6%
(884K)



YOUTH UNEMPLOYMENT

JAN 2020
13.6%
(1.01 M)

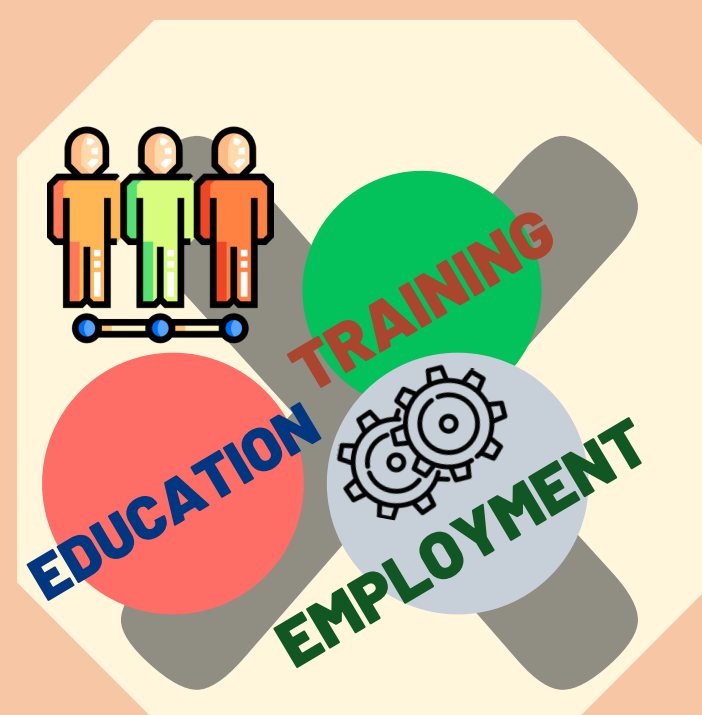
JAN 2019
14.2%
(1.01 M)



YOUTH NOT in EDUCATION, EMPLOYMENT, or TRAINING (NEET)

JAN 2020
16.9%
(3.36M)

JAN 2019
19.5%
(3.85M)



Note: Details may not add up to totals due to rounding.

Estimates for January 2020 and January 2019 are based on the 2015 CPH-based Population Projection.

Estimates for January 2020 are preliminary and may change.

ICONS MADE BY FREEPIK FROM WWW.FLATICON.COM