



**15TH NATIONAL
CONVENTION
ON STATISTICS**

03-05 OCTOBER 2022

*Organized by the Philippine Statistical System
Spearheaded by the Philippine Statistics Authority*



2019 National ICT Household Survey (NICTHS)

Expanded Data Analysis and Policy Research

Alexcenah S. Dela Vega

Plans and Policy Monitoring and Evaluation Division - National ICT Planning and Policy Standards Bureau
Department of Information and Communications Technology

Information Society Statistics
Crowne Plaza Manila Galleria
5 October 2022, 8:30 AM - 10:00 AM

Expanded Data Analysis and Policy Research (EDAPR) of the National ICT Household Survey (NICTHS)

Outline of Presentation

- I. Role of DICT in the ICT Statistics Roadmap 2020-2022**
- II. Overview of the NICTHS**
- III. Data Utilization Promoting Evidence-Based Policies/Programs**
 - A. Expanded Data Analysis and Policy Research
 - B. NGA, LGU, and Academe
- IV. Data Dissemination Giving Timely and Reliable Data**
 - A. ICT Knowledge Portal
- V. Moving Forward**



15TH NATIONAL CONVENTION ON STATISTICS

03-05 OCTOBER 2022

Organized by the Philippine Statistical System
Spearheaded by the Philippine Statistics Authority



ICT STATISTICS ROADMAP 2020-2022

Philippine Statistics Authority &
Interagency Committee on ICT Statistics



ASEAN &
International Communications Union

Expanded Data Analysis and Policy Research (EDAPR) of the National ICT Household Survey (NICTHS)



15TH NATIONAL CONVENTION ON STATISTICS

03-05 OCTOBER 2022

Organized by the Philippine Statistical System
Spearheaded by the Philippine Statistics Authority



OVERVIEW OF THE NATIONAL ICT HOUSEHOLD SURVEY

Scope and Coverage



First-ever PHILIPPINE ICT
Household Survey



DICT and PSRTI



Php 50M (\$1.04M)



~43,000 household
nationwide



1 Community 2,940 Barangays

Respondent:
**Authorized Personnel of the
Barangay**

The Community Questionnaire surveys the
existence of ICT infrastructures in the
barangay, and its awareness, access to
and use of ICT products and services.

2 Household Level 42,816 Households

Respondent:
**Head of Household
or knowledgeable
member of the
Household**



3 Individual Level 42,816 individuals

Respondent:
**Individuals
aged 10-74
years old**



Expanded Data Analysis and Policy Research (EDAPR) of the National ICT Household Survey (NICTHS)



15TH NATIONAL CONVENTION ON STATISTICS

03-05 OCTOBER 2022

Organized by the Philippine Statistical System
Spearheaded by the Philippine Statistics Authority



DATA UTILIZATION - EXPANDED DATA ANALYSIS AND POLICY RESEARCH



Key Results:

- Bridging the Digital Infrastructure Gap: Policy Options for Connecting Filipinos
- ICT Development for Promoting a More Innovative and Inclusive Society
- Gender Perspectives in E-Livelihood and E-Entrepreneurship

<https://dict.gov.ph/ictstatistics/ict-research-and-studies/>

Expanded Data Analysis and Policy Research (EDAPR) of the National ICT Household Survey (NICTHS)



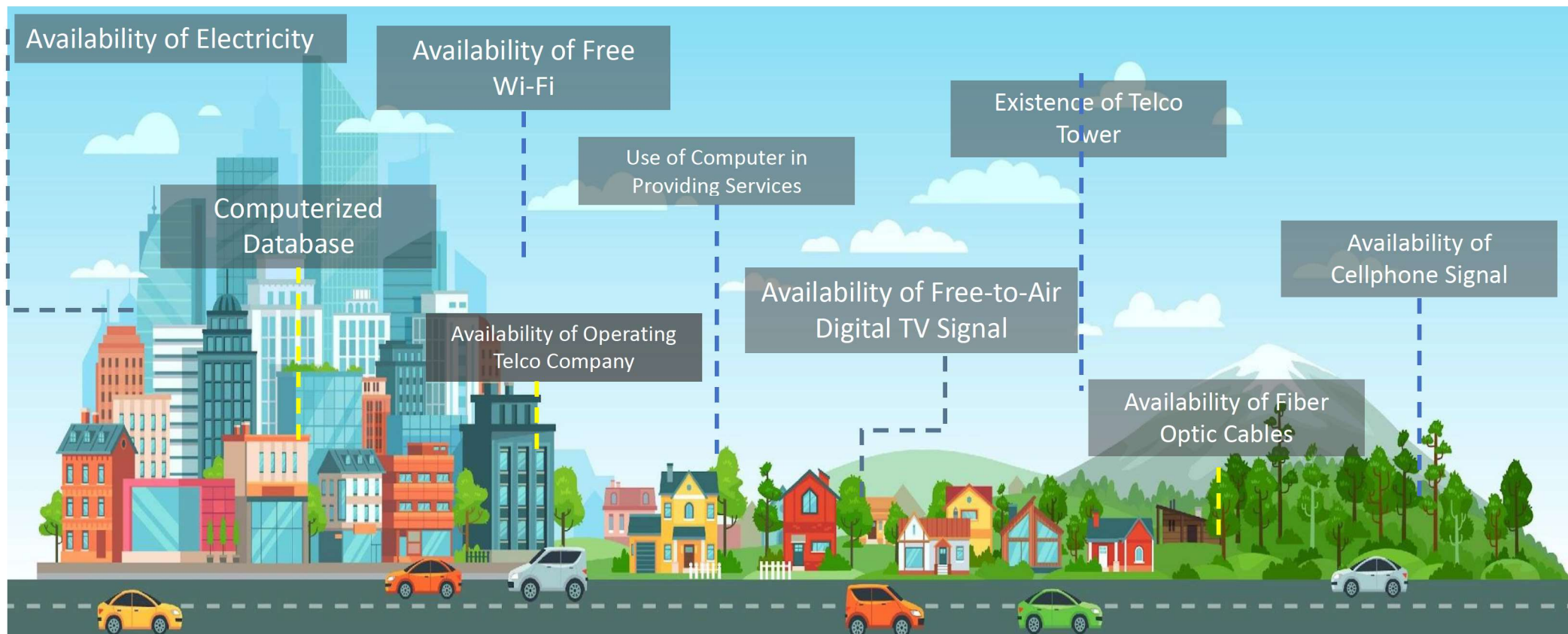
15TH NATIONAL CONVENTION ON STATISTICS

03-05 OCTOBER 2022

Organized by the Philippine Statistical System
Spearheaded by the Philippine Statistics Authority



Policy Note: Bridging the Digital Infrastructure Gap: Policy Options for Connecting Filipinos



Expanded Data Analysis and Policy Research (EDAPR) of the National ICT Household Survey (NICTHS)



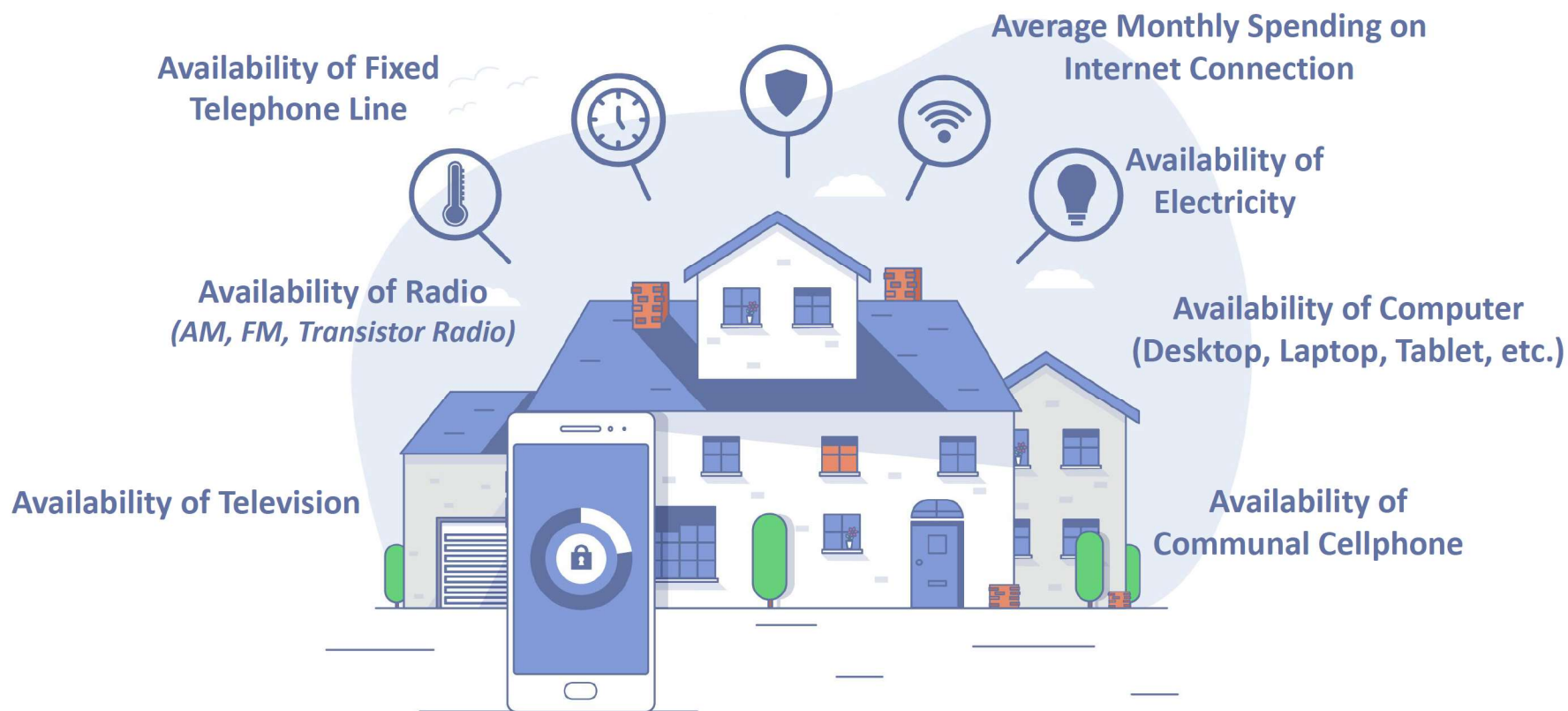
15TH NATIONAL CONVENTION ON STATISTICS

03-05 OCTOBER 2022

Organized by the Philippine Statistical System
Spearheaded by the Philippine Statistics Authority



Policy Note: Bridging the Digital Infrastructure Gap: Policy Options for Connecting Filipinos



Expanded Data Analysis and Policy Research (EDAPR) of the National ICT Household Survey (NICTHS)

Policy Note: Bridging the Digital Infrastructure Gap: Policy Options for Connecting Filipinos

34%

With Internet
Connection at Home

24%

With Computer

Php 1,280.59

Average monthly spending for
internet connection at home

Household Shared Devices

Has communal cellphone and computer	5.0%
Has communal cellphone, no computer	19.1%
Has computer, no communal cellphone	18.8%
No computer, no communal cellphone	57.2%





15TH NATIONAL CONVENTION ON STATISTICS

03-05 OCTOBER 2022

Organized by the Philippine Statistical System
Spearheaded by the Philippine Statistics Authority



Policy Note: ICT Development for Promoting a More Innovative and Inclusive Society



34%

Used a Computer



75%

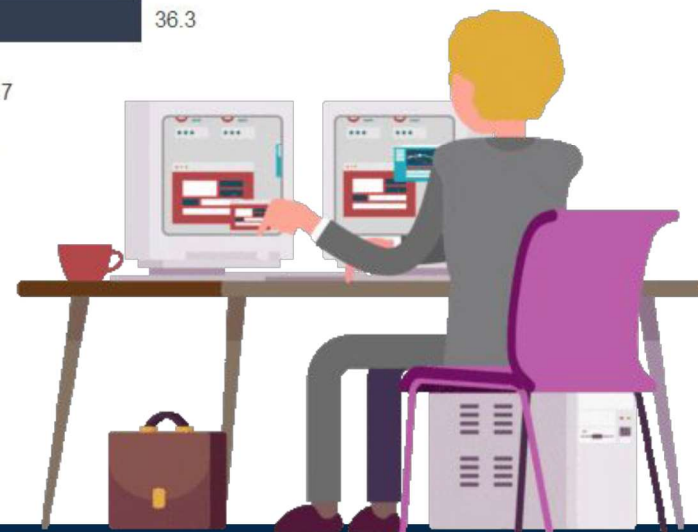
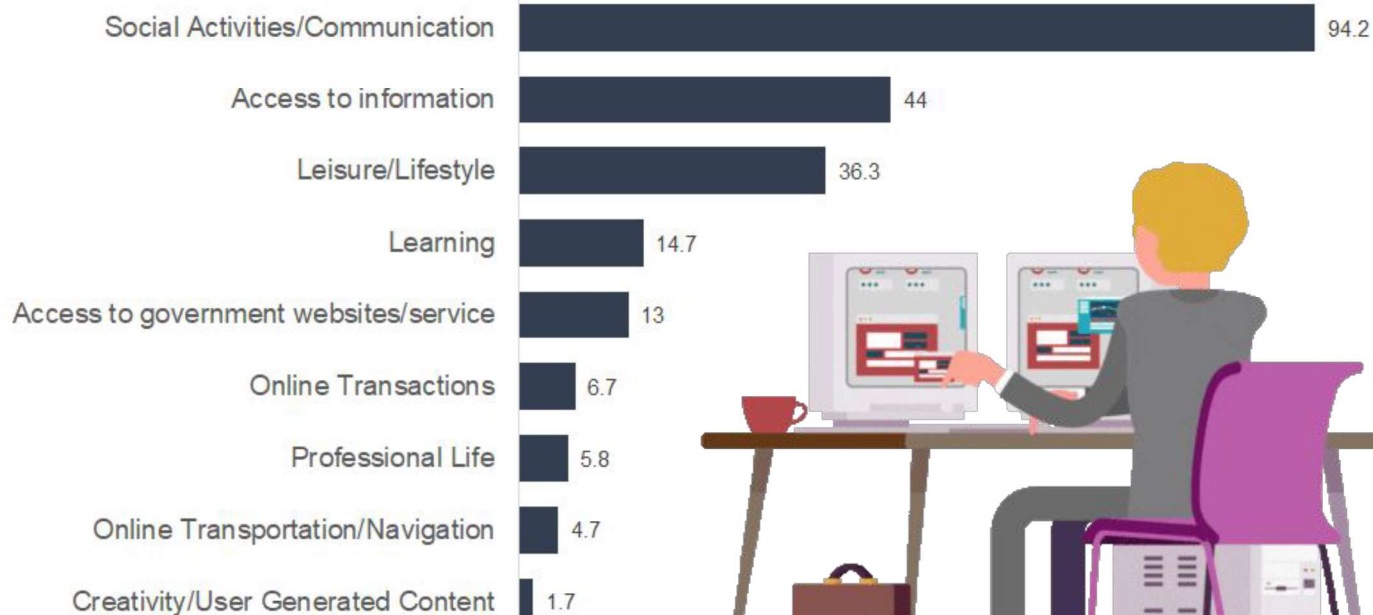
Ownership and
used of cellphone



47%

Used the internet

Online Activities



Expanded Data Analysis and Policy Research (EDAPR) of the National ICT Household Survey (NICTHS)



15TH NATIONAL CONVENTION ON STATISTICS

03-05 OCTOBER 2022

Organized by the Philippine Statistical System
Spearheaded by the Philippine Statistics Authority



Policy Note: Gender Perspectives in E-Livelihood and E-Entrepreneurship

Technology Enabled Incidents

- Awareness of cybersecurity
- Experience of cyber-incidents

Digital Economy

- Online Account Ownership
- Online Selling/Buying

Individual Use of ICT

- Use and access
- Online Activities
- Digital Skills



Expanded Data Analysis and Policy Research (EDAPR) of the National ICT Household Survey (NICTHS)



15TH NATIONAL CONVENTION ON STATISTICS

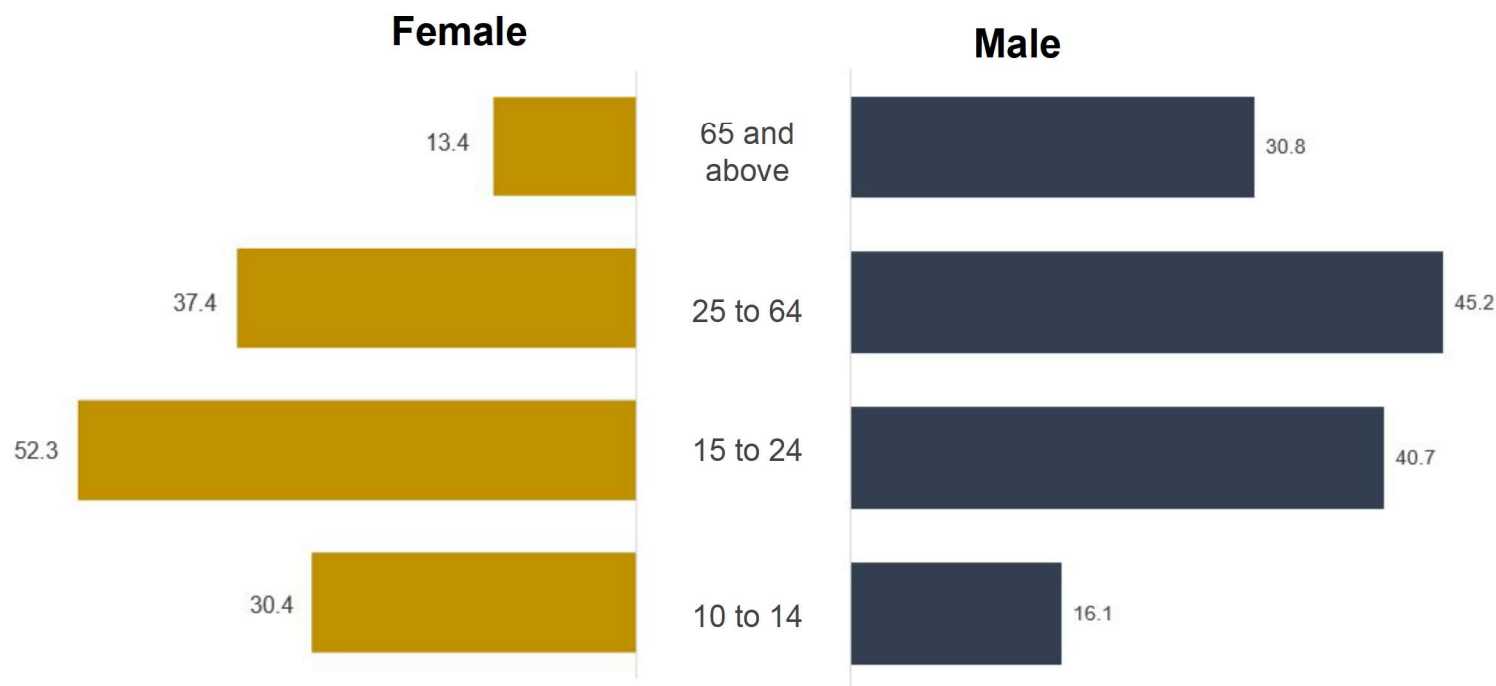
03-05 OCTOBER 2022

Organized by the Philippine Statistical System
Spearheaded by the Philippine Statistics Authority



Policy Note: Gender Perspectives in E-Livelihood and E-Entrepreneurship

Proportion (%) of Individuals that have at least one ICT Skills identified for measuring SDG Indicator 4.4.1



Expanded Data Analysis and Policy Research (EDAPR) of the National ICT Household Survey (NICTHS)

Proportion (%) of internet users by e-commerce transactions done in the last 12 months

Type of e-commerce transactions done in the last 12 months	Urban	Rural	Total
Purchase of goods/services online	23.5	15.9	20.6
Payment of bills online (electricity, water, internet, credit card)	7.7	3.7	6.2
Online banking (checked account balance, transferred/received funds)	6.8	4.6	5.9
Online booking of delivery services (delivery of food, gadgets, packages, etc)	6	3.2	4.9
Selling of goods/services online	3.9	3.4	3.7
Online booking of transportation services (flights, car)	3.7	1.3	2.8
Online booking of accommodation services (booked hotels, airbnb)	1.8	1.4	1.6
Stock trading and online investments	0.3	0.2	0.3



15TH NATIONAL CONVENTION ON STATISTICS

03-05 OCTOBER 2022

*Organized by the Philippine Statistical System
Spearheaded by the Philippine Statistics Authority*



DATA UTILIZATION - REQUESTS FROM THE STAKEHOLDERS



**Government
NGAs and LGUs**



Academe



International

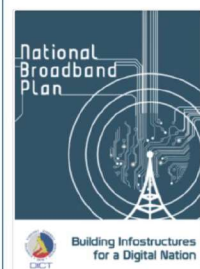
Expanded Data Analysis and Policy Research (EDAPR) of the National ICT Household Survey (NICTHS)



DATA DISSEMINATION

ICT KNOWLEDGE PORTAL

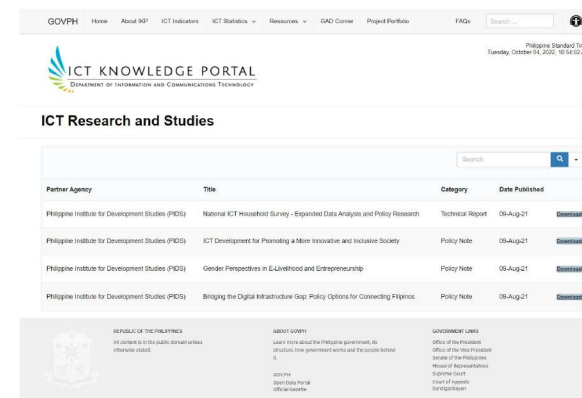
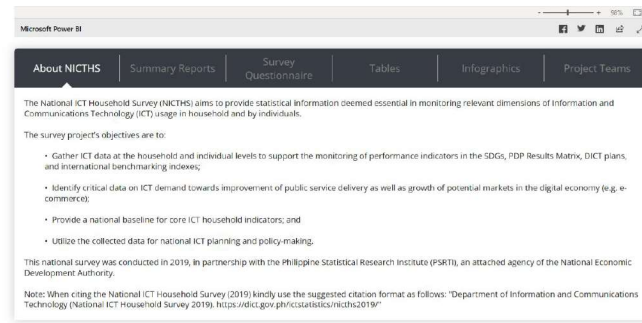
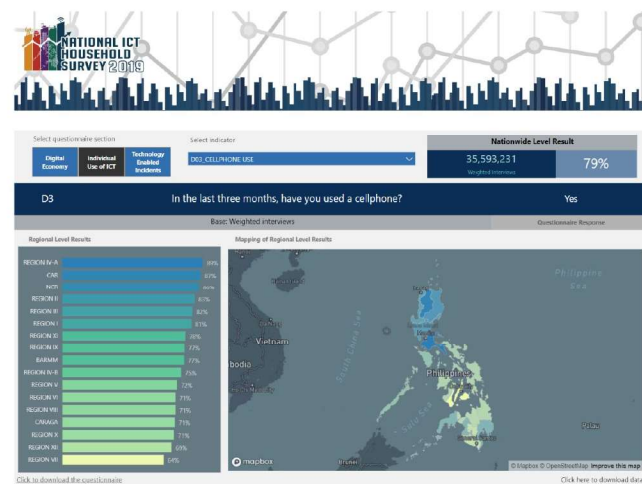
<https://dict.gov.ph/ictstatistics/>



Organized by the Philippine Statistical System
Spearheaded by the Philippine Statistics Authority



National ICT Household Survey 2019



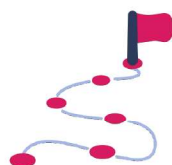
Expanded Data Analysis and Policy Research (EDAPR) of the National ICT Household Survey (NICTHS)



15TH NATIONAL CONVENTION ON STATISTICS

03-05 OCTOBER 2022

Organized by the Philippine Statistical System
Spearheaded by the Philippine Statistics Authority



Moving forward

- Conduct of Surveys
 - National ICT Household Survey 2.0
 - NGA-LGU ICT Readiness Survey
- Research Studies
 - Women in ICT Development Index (WIDI) (*Index Development*)
 - WIDI Small Area Estimation
- Active Participation to Inter-Agency Committees
 - Digital Economy Study
 - ICT Toolkit

Expanded Data Analysis and Policy Research (EDAPR) of the National ICT Household Survey (NICTHS)



15TH NATIONAL CONVENTION ON STATISTICS

03-05 OCTOBER 2022

*Organized by the Philippine Statistical System
Spearheaded by the Philippine Statistics Authority*



Thank you!



<http://www.psa.gov.ph/ncs>



<http://openstat.psa.gov.ph>



<https://twitter.com/PSAgovph>



<https://www.facebook.com/PSAgovph>



<https://dict.gov.ph/>



<https://dict.gov.ph/ictstatistics/>



<https://www.facebook.com/DICTgovph/>

Expanded Data Analysis and Policy Research (EDAPR) of the National ICT Household Survey (NICTHS)