



REPUBLIC OF THE PHILIPPINES

NATIONAL ECONOMIC AND DEVELOPMENT AUTHORITY

# Bagong Philippine Development Plan para sa Patuloy na Pagsulong



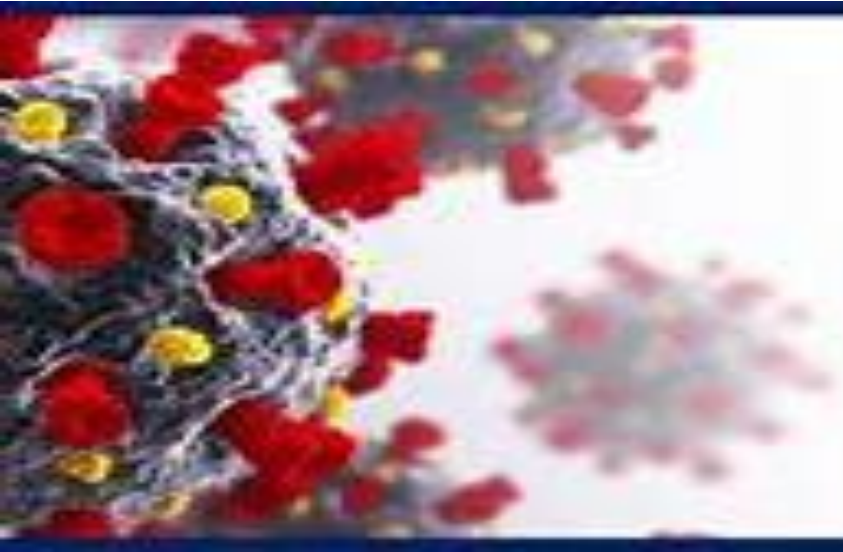
**October 3, 2022, National Convention on Statistics**



Key Message:

Nuanced planning needed to effect  
ECONOMIC TRANSFORMATION for a  
PROSPEROUS, INCLUSIVE and  
RESILIENT PHILIPPINES

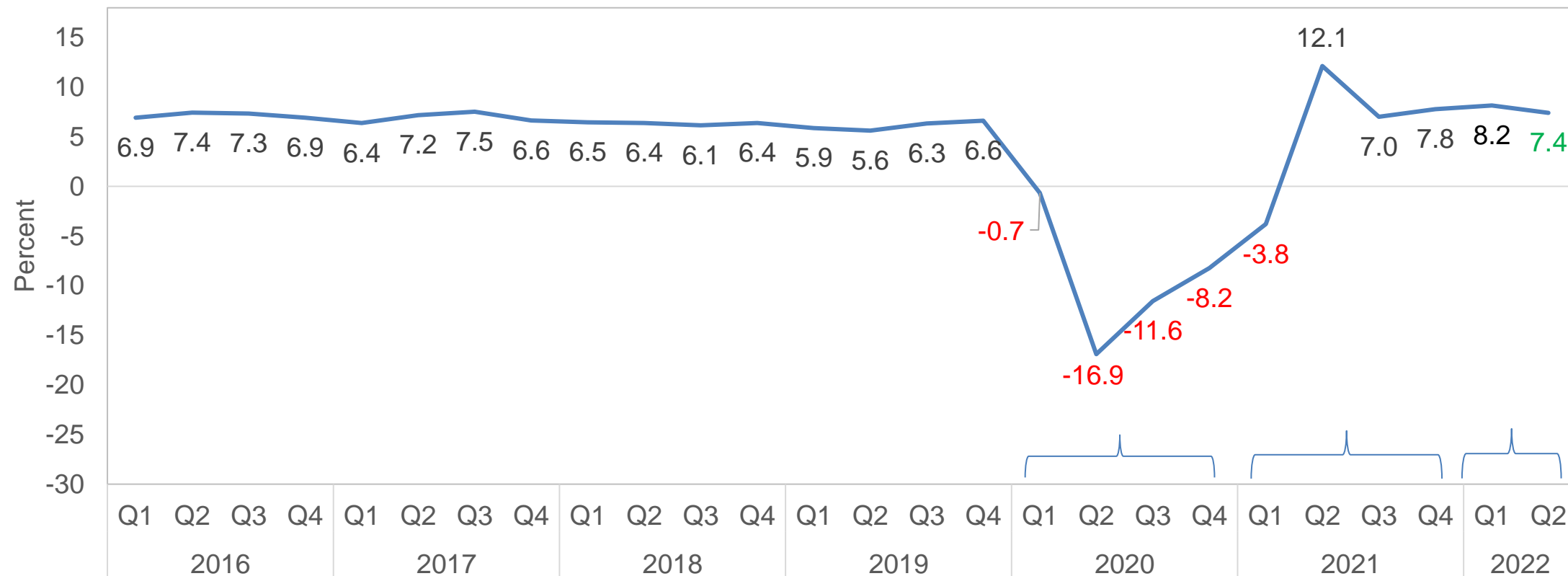




**COVID-19**

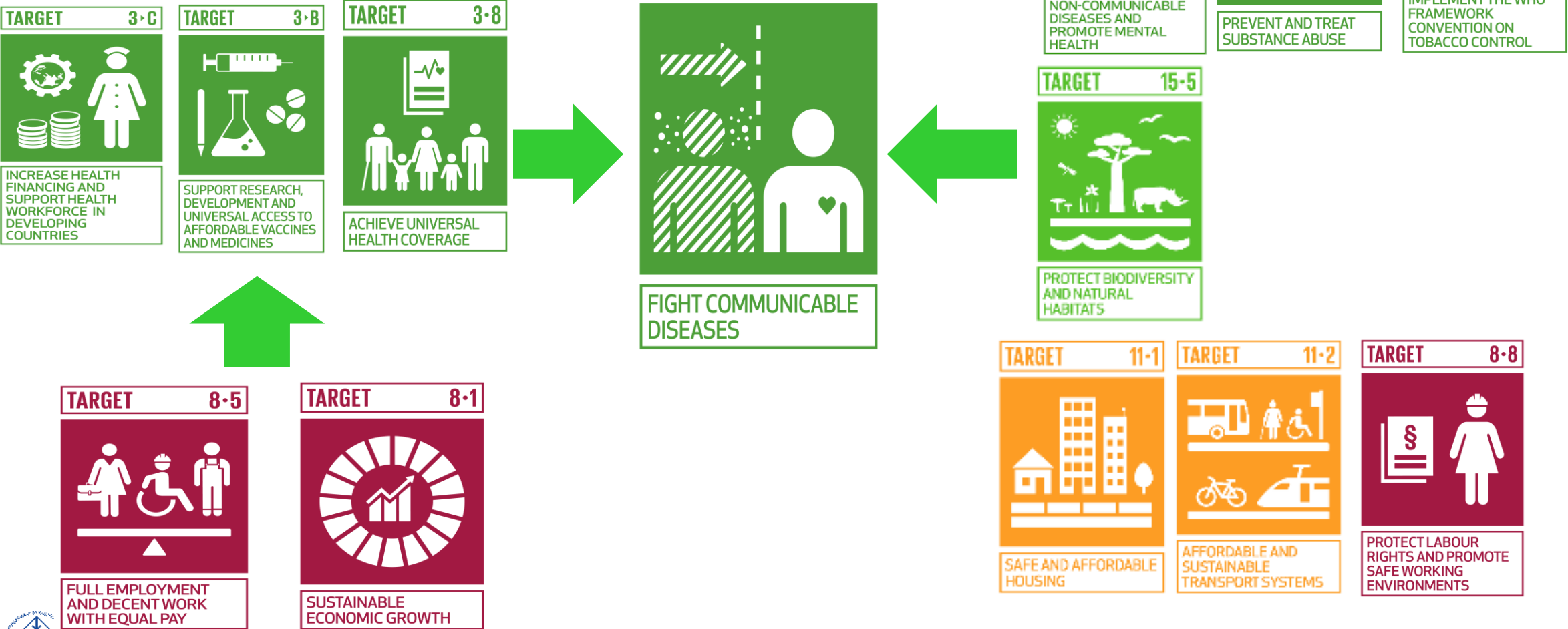
# Rapid growth recovery is firming up as the Philippine economy grew by 7.8% in the first semester of 2022.

Real GDP Growth (%)



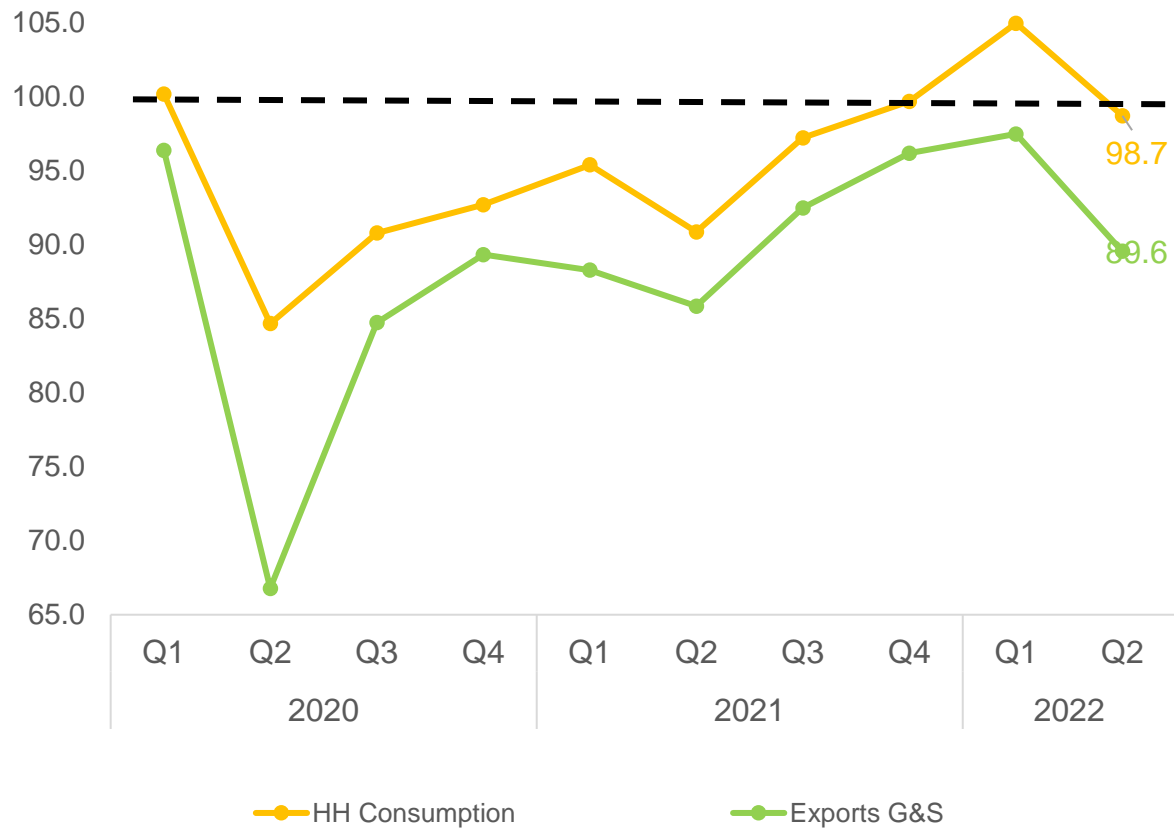


# Key interactions of SDG 3.3 Fighting communicable diseases

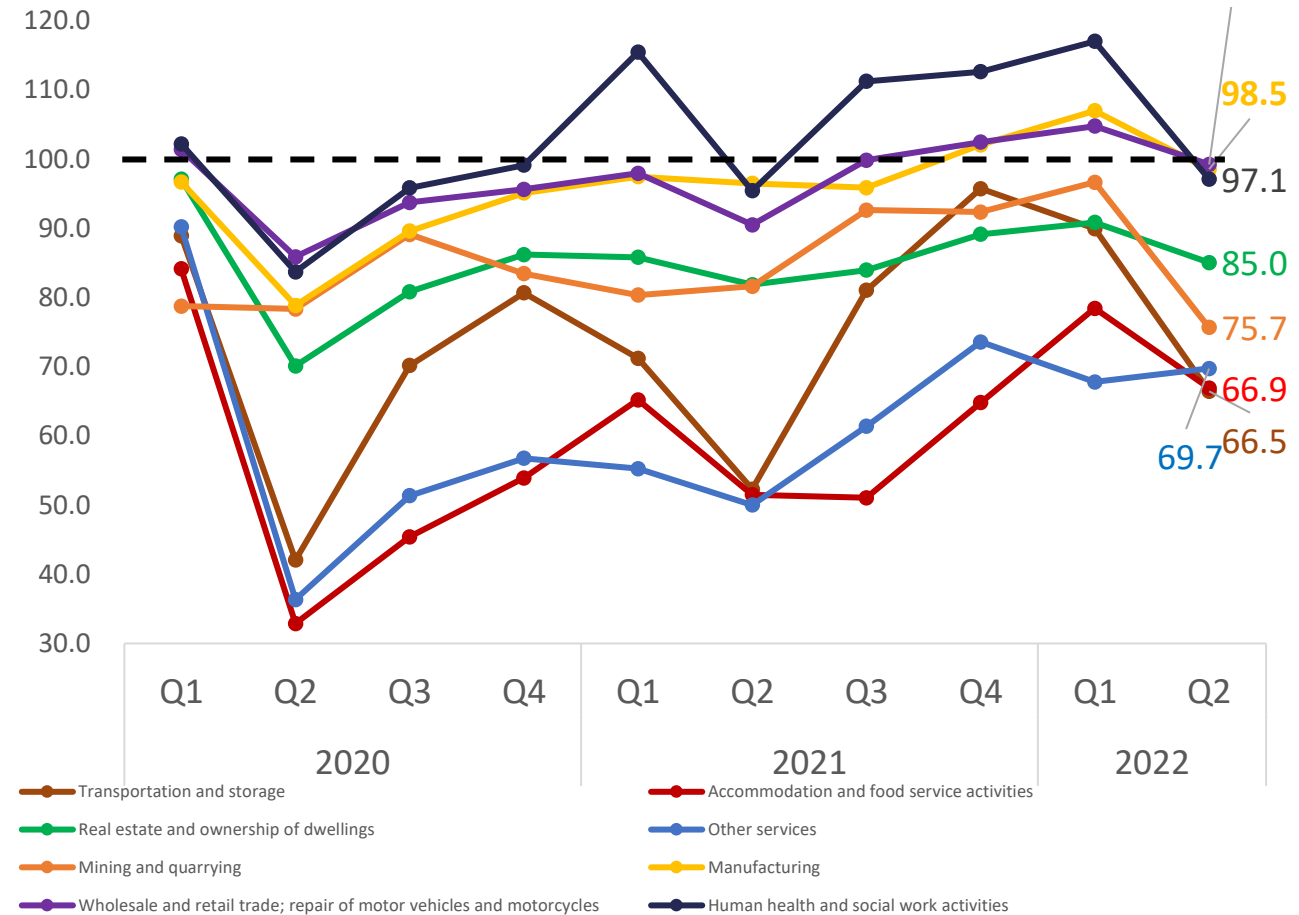


# Growth was largely broad-based but some sectors remain below pre-pandemic levels.

Real Sector Index (2019=100), Demand



Real Sector Index (2019=100), Supply

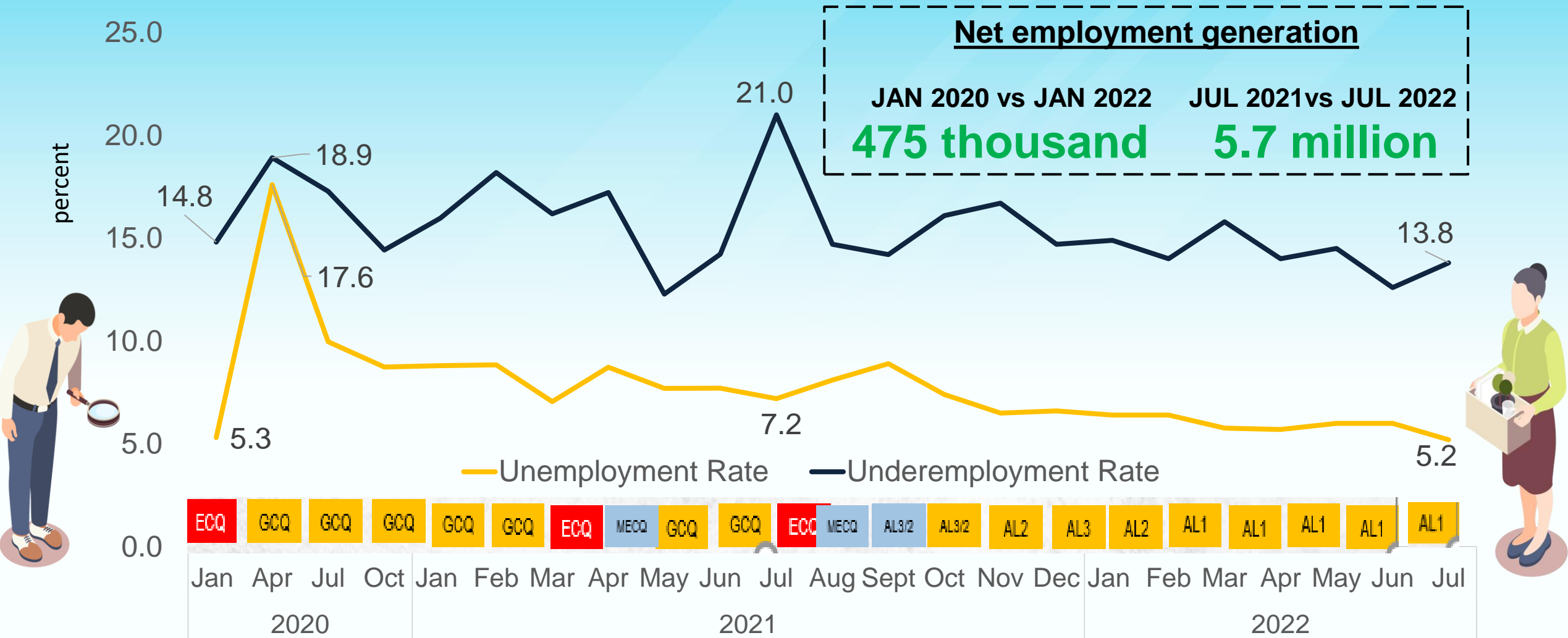


# Real GDP per capita also remains below the pre-pandemic (2019) level.

Real GDP Per Capita (2019=100)



# Still, unemployment (5.2%) and underemployment (13.8%) rates further improved in July 2022.

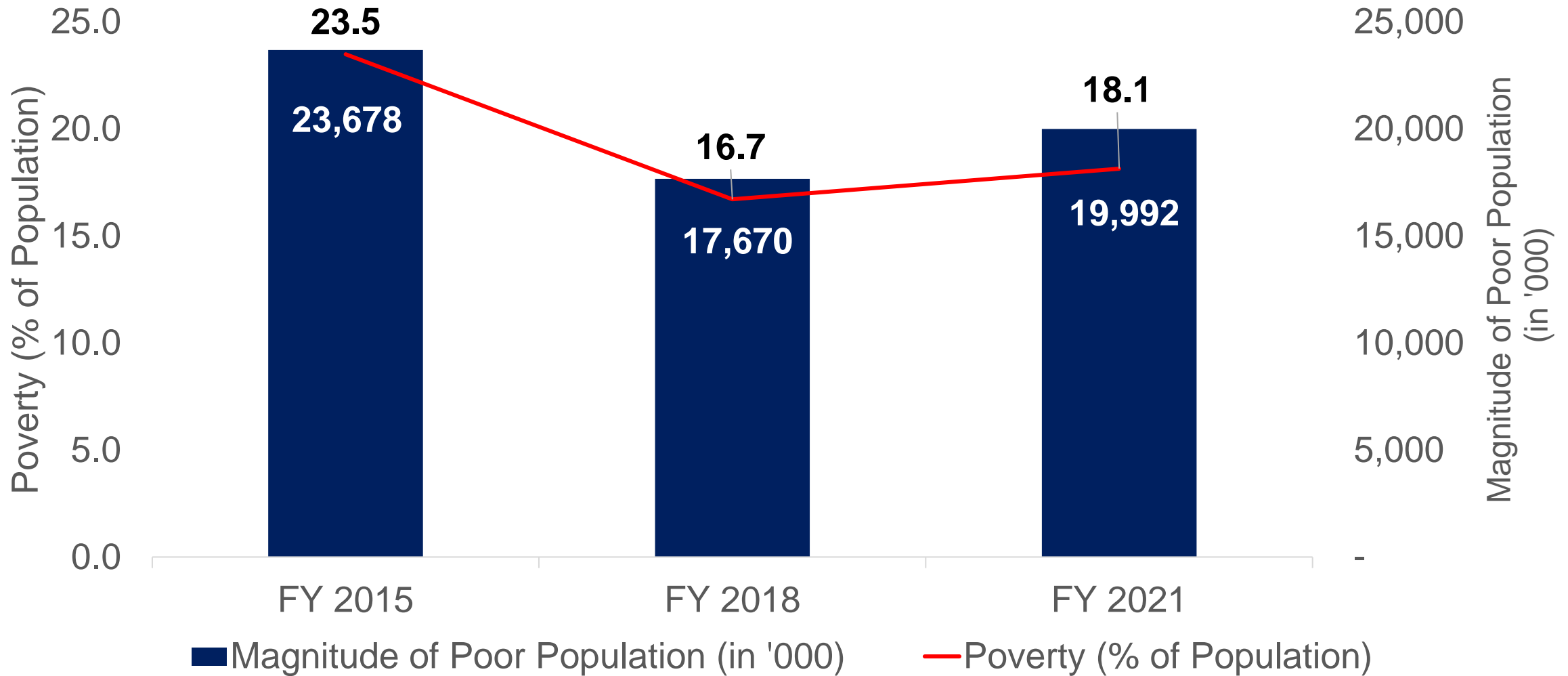


National Economic and Development Authority

Source: Labor Force Survey, Philippine Statistics Authority

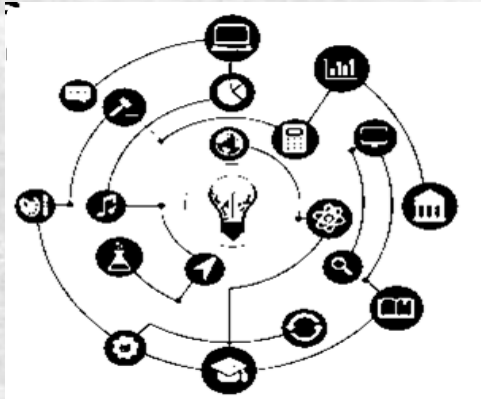


**Between 2015 and 2018, poverty declined significantly.  
However, due to the pandemic, it slightly increased to 18.1% in 2021.**

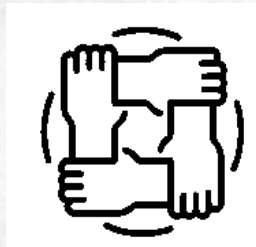


# Lessons Learned

1. **Everything** and **everyone** are **INTERCONNECTED**



2. There are **limits** to **government resources**



3. **Recovery has started, BUT**  
We need to **INVEST** in



4. Government needs to have **accurate and timely data**, supported by efficient systems to **respond effectively**



# **Economic Transformation for a Prosperous, Inclusive, and Resilient Society**



National Economic and Development Authority



# The 8-Point Socioeconomic Agenda of the Marcos Administration focuses on both near-term issues...

## 1. Protect purchasing power of families



Ensure food security



Reduce transport and logistics cost



Reduce energy cost to families

## 2. Reduce vulnerability and mitigate scarring from the COVID-19 pandemic



Ensure capacity of healthcare in case of surges

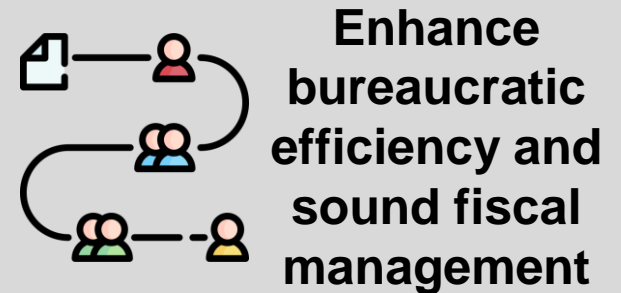


Address learning losses



Strengthen social protection

## 3. Ensure sound macroeconomic fundamentals and government processes



Ensure a resilient and innovative financial sector



# ...and medium-term constraints to economic transformation.

## 4. Create more jobs



Promote investments



Improve infrastructure



Ensure energy security

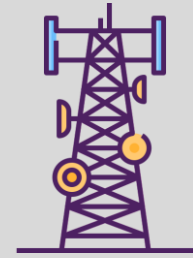
## 5. Create quality jobs



Increase employability



Advance R&D and innovation



Enhance the digital economy

## 6. Create green jobs



Establish livable and sustainable communities

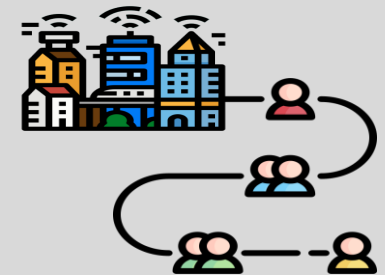
Pursue a green and blue economy



## 7. Ensure a level playing field



## 8. Uphold public order and safety, peace and security







# MATATAG, MAGINHAWA AT PANATAG NA BUHAY



## ECONOMIC TRANSFORMATION FOR A PROSPEROUS, INCLUSIVE, AND RESILIENT SOCIETY

### DEVELOP AND PROTECT CAPABILITIES OF INDIVIDUALS AND FAMILIES



PROMOTE HUMAN CAPITAL AND SOCIAL DEVELOPMENT

- IMPROVE EDUCATION AND LIFELONG LEARNING
- BOOST HEALTH
- ESTABLISH LIVABLE COMMUNITIES



INCREASE INCOME EARNING ABILITY

- EXPAND TRAINING AND SKILLS DEVELOPMENT
- INTENSIFY EMPLOYMENT FACILITATION



PROTECT PURCHASING POWER

- ENSURE FOOD SECURITY AND PROPER NUTRITION
- RATIONALIZE SOCIAL PROTECTION

### TRANSFORM PRODUCTION SECTORS TO GENERATE MORE QUALITY JOBS AND COMPETITIVE PRODUCTS



MODERNIZE AGRICULTURE AND AGRI-BUSINESS



REVITALIZE INDUSTRY



REINVIGORATE SERVICES

- PROMOTE TRADE AND INVESTMENTS
- ADVANCE R&D, TECHNOLOGY, AND INNOVATION
- ENHANCE INTER-INDUSTRY LINKAGES



PRACTICE GOOD GOVERNANCE AND IMPROVE BUREAUCRATIC EFFICIENCY



ENSURE MACROECONOMIC STABILITY



PROMOTE COMPETITION AND IMPROVE REGULATORY EFFICIENCY



ENSURE PEACE AND SECURITY AND ENHANCE ADMINISTRATION OF JUSTICE



EXPAND AND UPGRADE INFRASTRUCTURE



ACCELERATE CLIMATE ACTION AND STRENGTHEN DISASTER RESILIENCE



National Economic and Development Authority

Preliminary Framework as of September 6, 2022



# MATATAG, MAGINHAWA AT PANATAG NA BUHAY



## ECONOMIC TRANSFORMATION FOR A PROSPEROUS, INCLUSIVE, AND RESILIENT SOCIETY

### DEVELOP AND PROTECT CAPABILITIES OF INDIVIDUALS AND FAMILIES



PROMOTE HUMAN CAPITAL AND SOCIAL DEVELOPMENT



INCREASE INCOME EARNING ABILITY



PROTECT PURCHASING POWER



BOOST HEALTH AND NUTRITION



IMPROVE EDUCATION AND LIFELONG LEARNING



ESTABLISH LIVABLE COMMUNITIES



EXPAND TRAINING AND SKILLS DEVELOPMENT



INTENSIFY EMPLOYMENT FACILITATION



RATIONALIZE SOCIAL PROTECTION



ENSURE FOOD SECURITY

### TRANSFORM PRODUCTION SECTORS TO GENERATE MORE QUALITY JOBS AND COMPETITIVE PRODUCTS



MODERNIZE AGRICULTURE AND AGRI-BUSINESS



REVITALIZE INDUSTRY



REINVIGORATE SERVICES



ADVANCE R&D, TECHNOLOGY, AND INNOVATION



ENHANCE INTER-INDUSTRY LINKAGES



PROMOTE TRADE AND INVESTMENTS



PRACTICE GOOD GOVERNANCE AND IMPROVE BUREAUCRATIC EFFICIENCY



ENSURE MACROECONOMIC STABILITY



PROMOTE COMPETITION AND REGULATORY EFFICIENCY



ATTAIN PEACE AND SECURITY



EXPAND AND UPGRADE INFRASTRUCTURE



ACCELERATE CLIMATE ACTION AND STRENGTHEN DISASTER RESILIENCE







## **MATATAG**

- ✓ Family is together
- ✓ Time with friends
- ✓ Work-life balance
- ✓ Strong sense of community

## **MAGINHAWA**

- ✓ Free from hunger and poverty
- ✓ Decent house with secure long-term tenure
- ✓ Good transport, mobility options
- ✓ Travel and vacation

## **PANATAG**

- ✓ Enough Resources for day-to-day needs and unexpected expenses
- ✓ Peace and security
- ✓ Long and healthy life
- ✓ Comfortable retirement



Key Message:

**Nuanced planning needed to effect  
ECONOMIC TRANSFORMATION for a  
PROSPEROUS, INCLUSIVE and  
RESILIENT PHILIPPINES**







REPUBLIC OF THE PHILIPPINES

NATIONAL ECONOMIC AND DEVELOPMENT AUTHORITY

# Bagong Philippine Development Plan para sa Patuloy na Pagsulong

