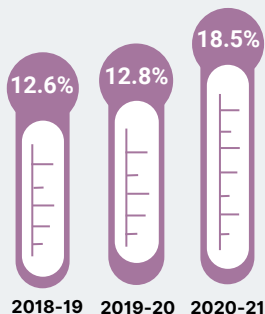




## CURRENT HEALTH EXPENDITURE

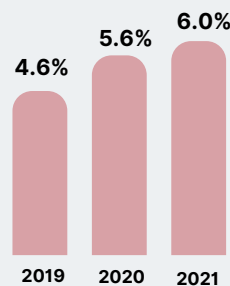
Growth Rate



The country's Current Health Expenditure (CHE) reached **PhP 1.09 trillion in 2021**, 18.5 percent higher compared with PhP 917.15 billion in 2020.

## TOTAL HEALTH EXPENDITURE TO GDP

Share



The share of Total Health Expenditure (THE) to the Gross Domestic Product (GDP) at current prices was **6.0 percent in 2021**.

## HEALTH CAPITAL FORMATION EXPENDITURE

Share and Level



**60.2%**

**Machinery and Equipment**  
PhP 42.84 billion



**39.6%**

**Infrastructure**  
PhP 28.14 billion

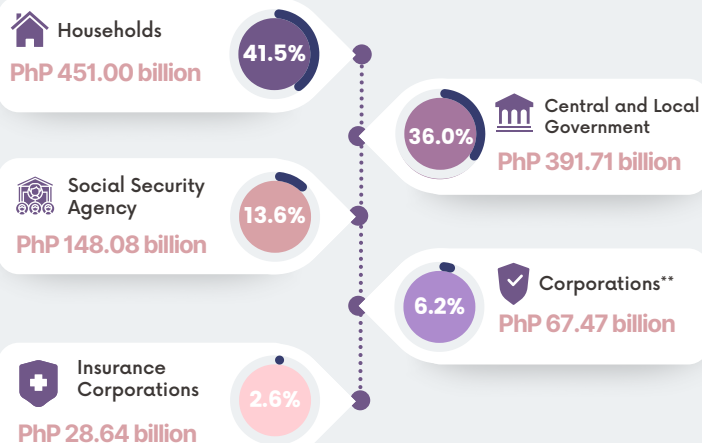


**0.2%**

**Intellectual Property Products**  
PhP 165.15 million

## CURRENT HEALTH EXPENDITURE BY FINANCING AGENT

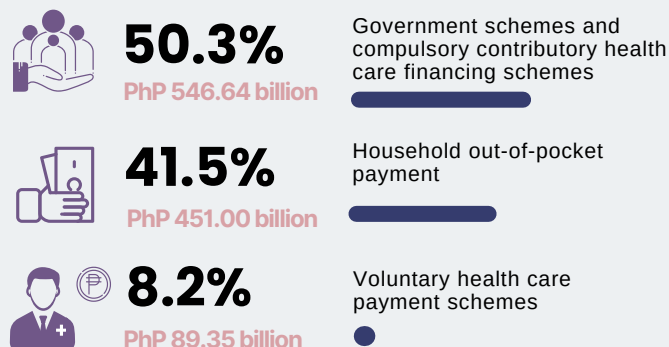
Level and Share



\*\*Other than insurance corporations (e.g., HMOs, etc.)

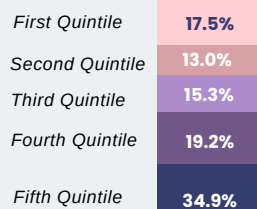
## CURRENT HEALTH EXPENDITURE BY FINANCING SCHEME

Share and Level



## CURRENT HEALTH EXPENDITURE BY INCOME QUINTILE

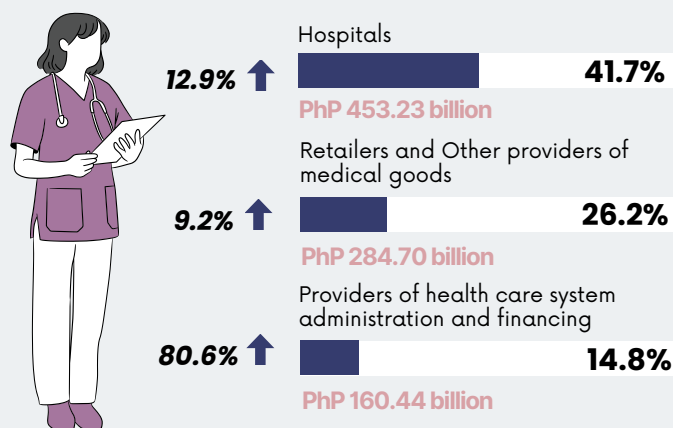
Share



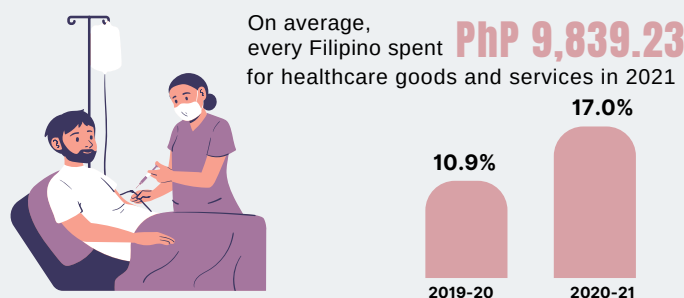
Health spending of the fifth quintile (top quintile) was the highest at **PhP 379.76 billion or 34.9 percent**. The poorest quintile recorded **PhP 190.43 billion** health spending or **17.5 percent** share.

## TOP 3 HEALTH CARE PROVIDERS

Growth Rate\*, Share, and Level



## PER CAPITA CHE AND GROWTH RATE



Note: Shares may not add up to 100% due to rounding

Vector designs are sourced from: canva.com

\*2020-2021 as reference period