



VIOLENCE AGAINST WOMEN

DID YOU KNOW?

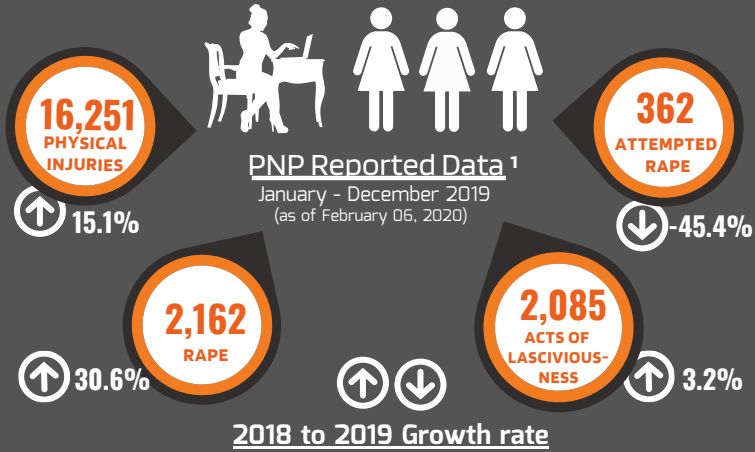


Violence against Women (VAW) is any act of gender-based violence that result in physical, sexual, or mental harm or suffering to women, including threats of such acts, coercion or arbitrary deprivation of liberty, whether occurring in public or private life.

-United Nations

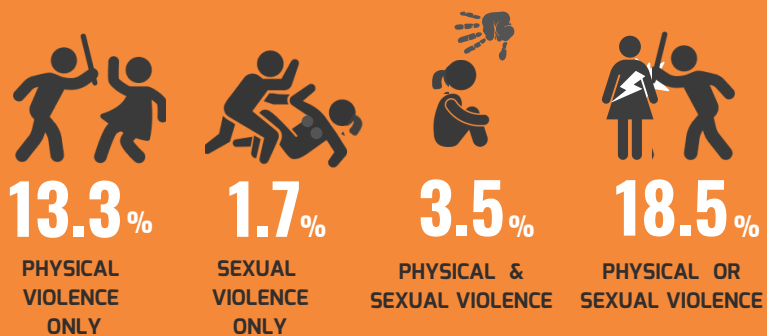


MOST REPORTED CASES OF VIOLENCE AGAINST WOMEN



FORMS OF VIOLENCE

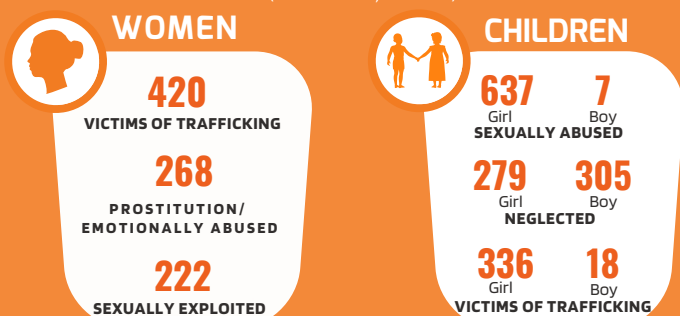
(Percentage of Women Aged 15 -49 Who Have Ever Experienced Different Forms of Violence)



2017 NDHS²

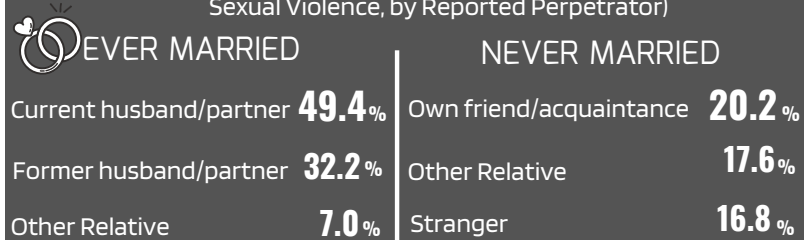
Top 3 Clients Served by DSWD³

January - December 2019
(as of February 21, 2020)



TOP 3 REPORTED SEXUAL VIOLENCE PERPETRATORS

(Percentage of Women Aged 15 - 49 Who Have Experienced Sexual Violence, by Reported Perpetrator)

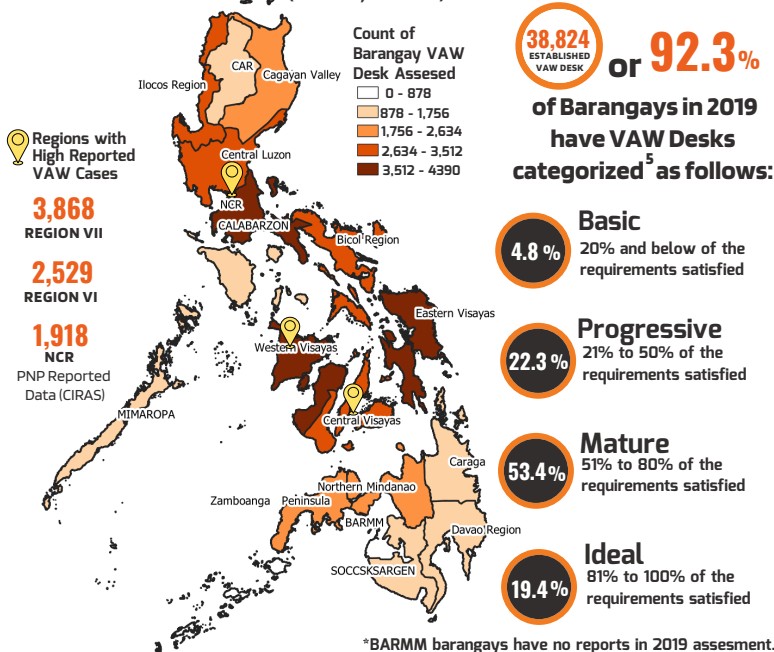


*Women can report more than one person who committed the violence

2017 NDHS²

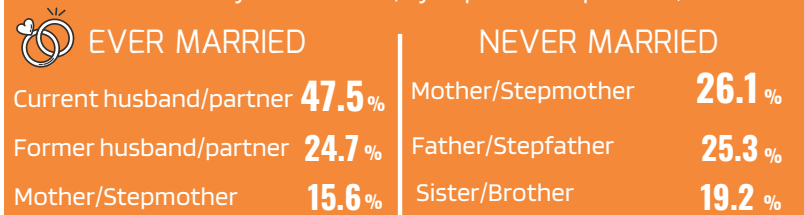
DILG - BARANGAY VAW DESKS

(as of May 25, 2020)



TOP 3 REPORTED PHYSICAL VIOLENCE PERPETRATORS⁴

(Percentage of Women Aged 15 - 49 Who Have Experienced Physical Violence, by Reported Perpetrator)

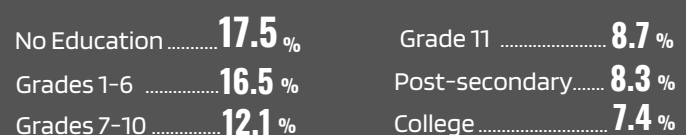


2017 NDHS²

ATTITUDE TOWARD WIFE BEATING BY HIGHEST EDUCATIONAL ATTAINMENT



(Percentage of Women Aged 15 - 49 Who Agree that a Husband is justified in Hitting/Beating his Wife with at least One Specified Reason)
(Burns the food, argues with him, goes out without telling him, neglects the children, refuses to have sexual intercourse)



2017 NDHS²

1 - The Philippine National Police Crime Information Reporting and Analysis System (CIRAS) contains reported cases of violence against women and children. Physical Injuries include physical abuse in violation of RA9262, serious physical injury, less serious physical injury and slight physical injuries.
2 - The National Demographic and Health Survey (NDHS) 2017 is the sixth Demographic and Health Survey conducted in the Philippines as part of the DHS Program, and the 11th NDHS since 1968. NDHS included Women's Safety Module since 2008 to collect information on domestic violence on women aged 15 - 49.
3 - The Department of Social Welfare and Development (DSWD) is mandated by law to develop, administer and implement comprehensive social welfare programs designed to uplift the living conditions and empower the disadvantaged children, youth, women, older persons, person with disabilities, families in crisis or at-risk and communities needing assistance.
4 - Ever-married women can report up to three perpetrators. Never-married women can report only the one person who was the first to commit the violence.
5 - VAW Desks are categorized based on set of indicators that satisfy the requirements for establishment of Brgy. VAW Desk. This includes the following: Establishment (attendance to capacity building activities); Resources (logistical requirements such as facility, equipment, furniture and vehicle); Policies, Plans and Budget (GAD Plan and Budget, Programs and Activities), and Accomplishments (Quarterly and Annual Report)

