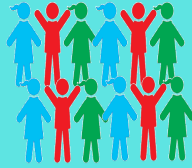


# APRIL 2018 LABOR FORCE SURVEY

## Labor and Employment Indicators

**Population 15 years old and over**  
**71.0 Million**



**Labor Force Participation Rate**  
**60.9 %**



**Employment Rate**  
**94.5 %**



**Unemployment Rate**  
**5.5 %**



**Underemployment Rate**  
**17.0 %**



Regions with highest employment rates were Cagayan Valley (97.7 %) and CAR (96.7 %).

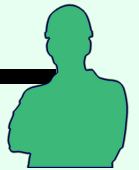


**68.0 %**

**Worked for 40 hours or more per week**

**31.0 %**

**Worked for less than 40 hours per week**



The remaining 1.1 % were those with a job but not at work. Workers worked 42.0 hours per week on average.

### Percent Distribution by Top 4 Major Occupation Group

**26.6 % ELEMENTARY OCCUPATIONS**  
**16.0 % MANAGERS**  
**14.8 % SERVICE AND SALES WORKERS**  
**12.5 % SKILLED AGRICULTURAL, FORESTRY, AND FISHERY WORKERS**

### Percent Distribution by Sector

**Services**



**56.4 %**

**Agriculture**



**23.9 %**

**Industry**



**19.7 %**

### Percent Distribution by Class of Worker

**63.8 %**

**Wage and salary workers**

**27.2 %**

**Self-employed without any paid employee**

**5.3 %**

**Unpaid family workers**

**3.7 %**

**Employer in own family-operated farm or business**