

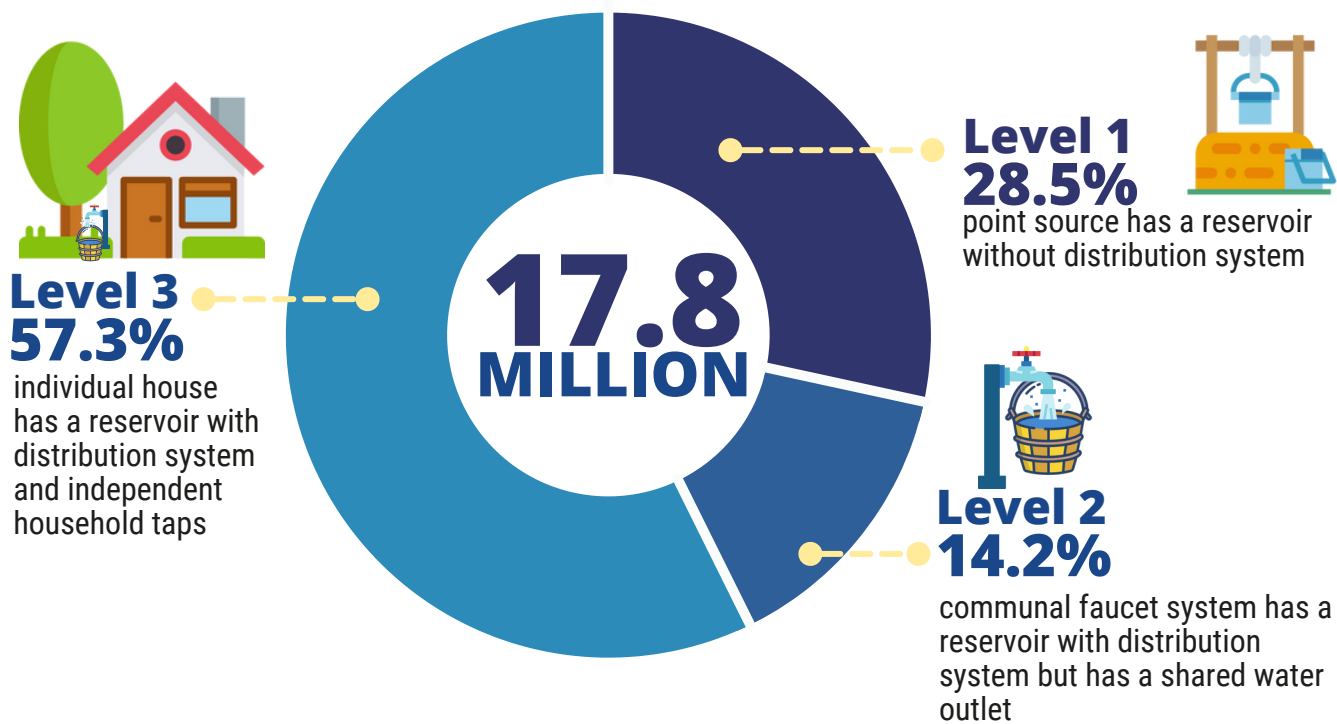
### COMPONENT 5: HUMAN SETTLEMENTS AND ENVIRONMENTAL HEALTH

This component compiles statistics on the environment in which humans live and work, particularly with regard to living conditions and environmental health.<sup>1</sup> Statistics on this component are linked to the Sustainable Development Goals (SDGs):



<sup>1</sup> based on UN FDES 2013

#### HOUSEHOLD WITH ACCESS TO IMPROVED WATER SUPPLY BY LEVEL, 2019



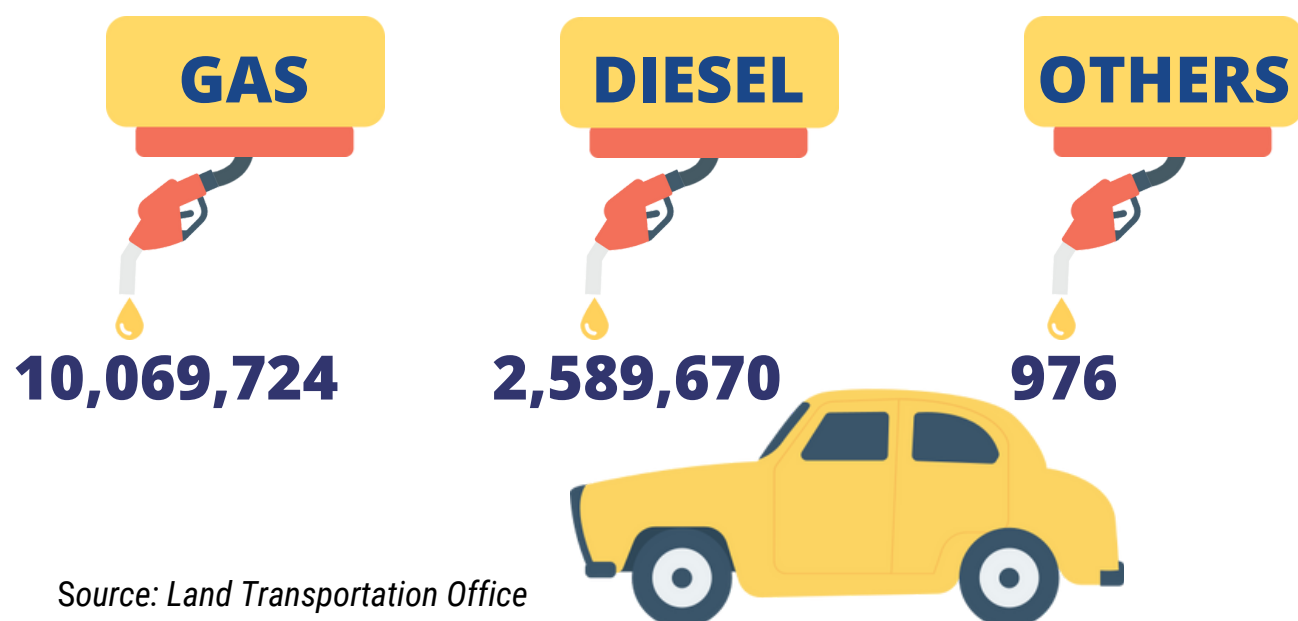
Source: Department of Health

#### NUMBER OF HOUSEHOLDS WITH IMPROVED SANITATION FACILITY, 2019



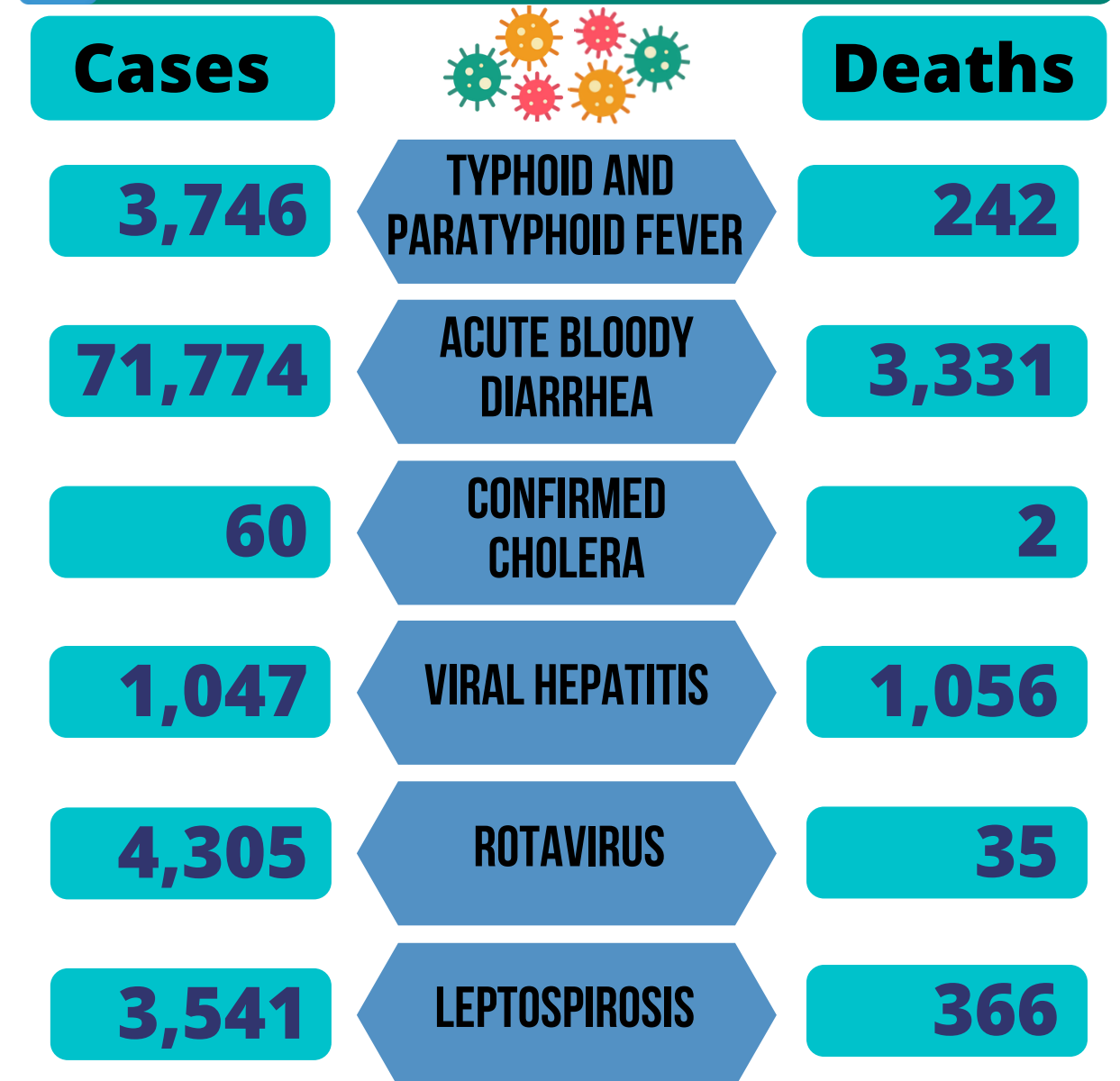
Source: Department of Health

#### NUMBER OF REGISTERED VEHICLES BY FUEL TYPE, 2019

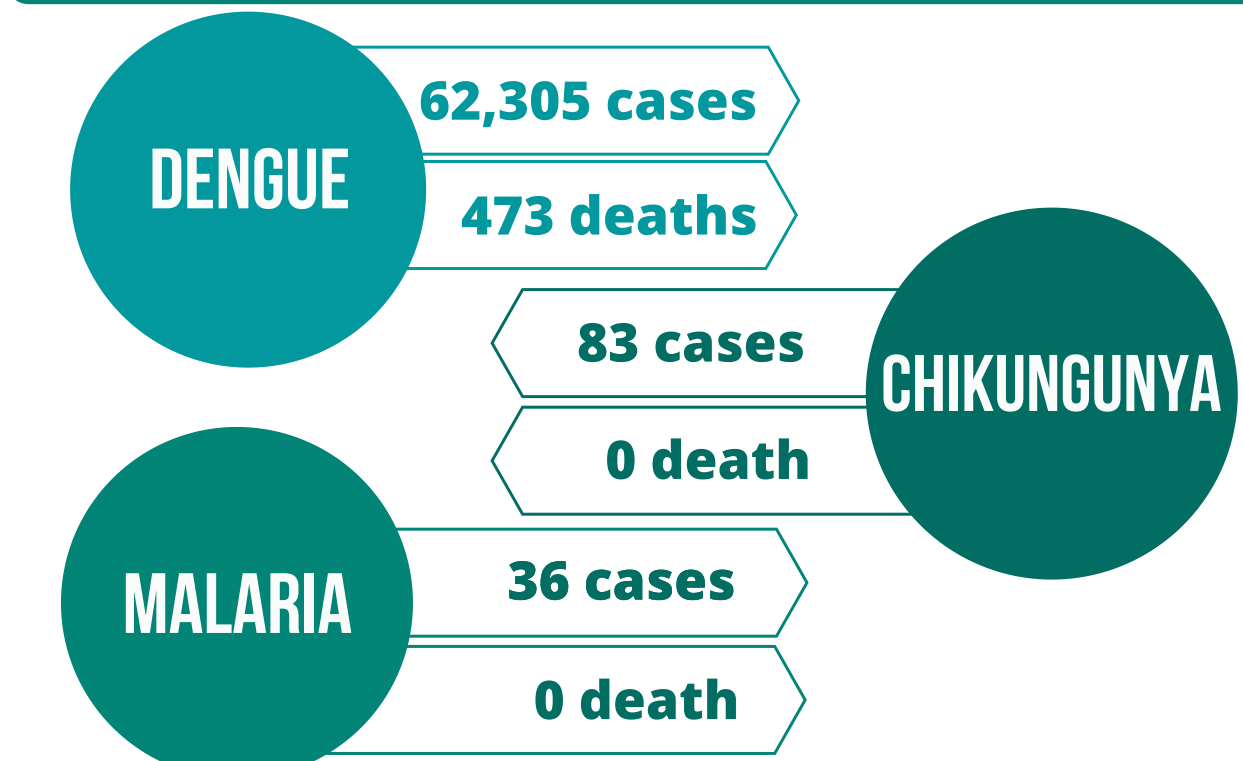


Source: Land Transportation Office

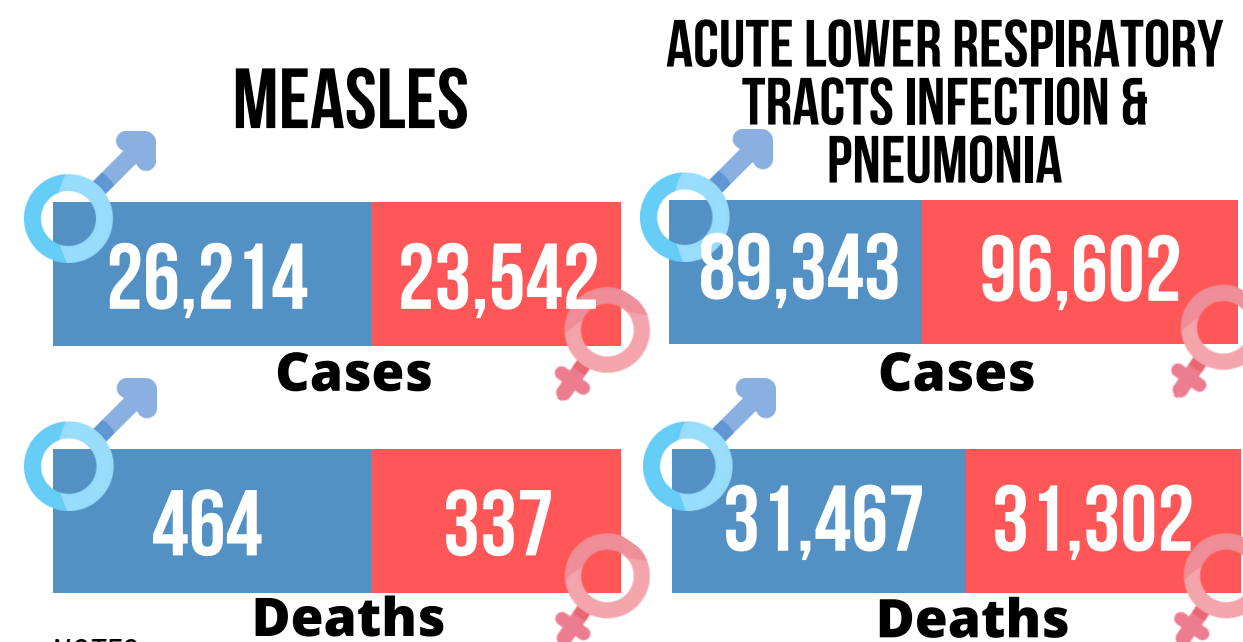
#### NUMBER OF CASES<sup>(1)</sup> AND DEATHS<sup>(2)</sup> OF WATER-BORNE DISEASES, 2019



#### NUMBER OF CASES<sup>(1)</sup> AND DEATHS<sup>(2)</sup> OF VECTOR-BORNE DISEASES, CHILDREN 0-4 YEARS OLD, 2019



#### NUMBER OF CASES<sup>(1)</sup> AND DEATHS<sup>(2)</sup> OF AIRBORNE DISEASES, 2019



NOTES:

(1) Source is Department of Health and Number of cases per 100,000 population except dengue and acute lower respiratory tracts infection & pneumonia

(2) Source is the Vital Statistics Division of the Philippine Statistics Authority on the Number of Deaths except for Rotavirus and Leptospirosis

\*Some deaths registered are greater than the number of cases recorded because the number of deaths is based on the results of actual registration without any adjustment for under registration while number of cases is per 100,000 population and is reported without any adjustment.

\*Number of deaths of decedents whose usual residence is abroad is disregarded in this report.