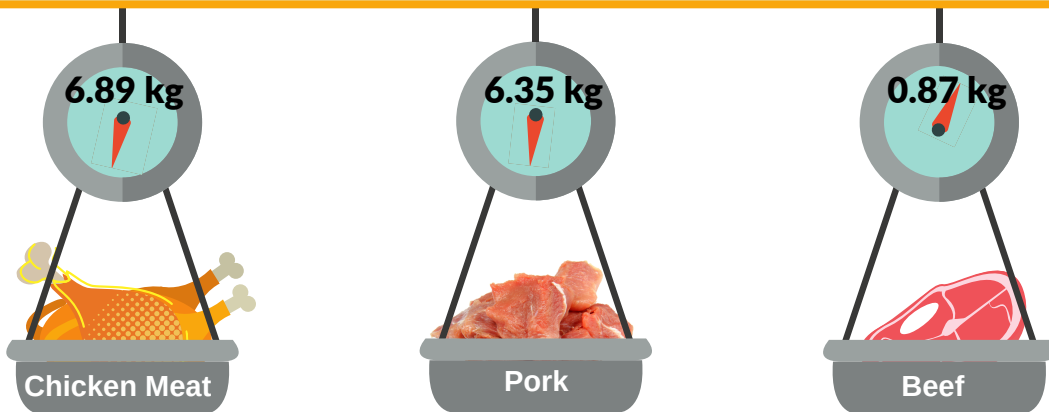


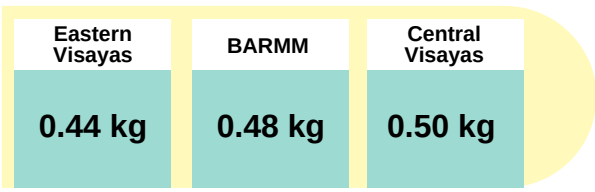
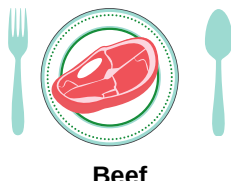
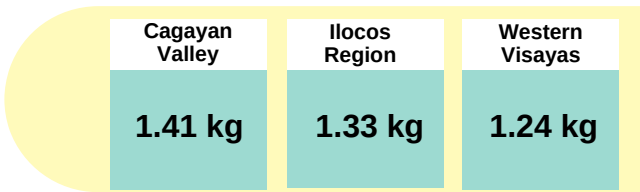
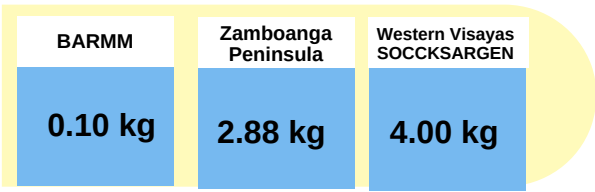
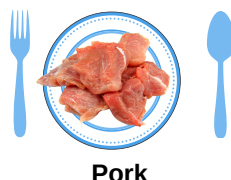
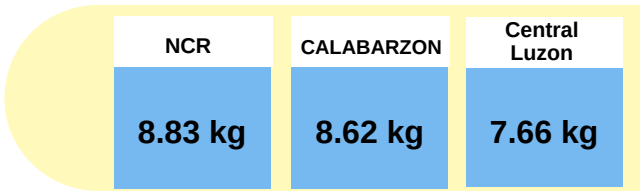
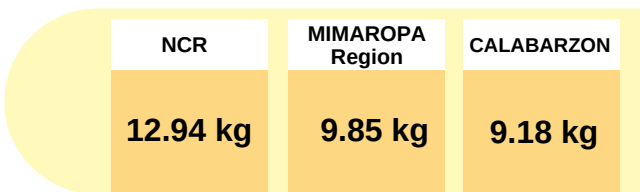


Average Annual Per Capita Consumption by Type of Meat, Philippines: 2018

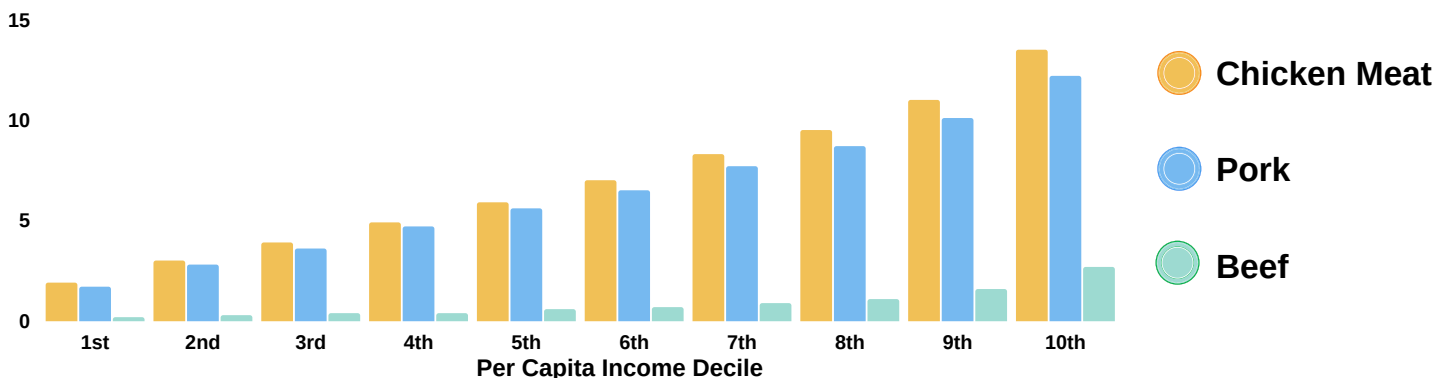


Regions with Highest Per Capita Consumption by Type of Meat

Regions with Lowest Per Capita Consumption by Type of Meat



Average Annual Per Capita Consumption by Type of Meat and by Per Capita Income Decile, Philippines: 2018 (in kilograms)



Source: Philippine Statistics Authority (PSA), 2018 Family Income and Expenditure Survey (FIES)