

OCTOBER 2018 LABOR FORCE SURVEY

Labor and Employment Indicators

POPULATION 15 YEARS OLD AND OVER



October 2018
71.9 Million

October 2017
70.4 Million

LABOR FORCE PARTICIPATION RATE



October 2018
60.6%

October 2017
62.1%

EMPLOYMENT RATE



October 2018
94.9%

October 2017
95.0%

UNDEREMPLOYMENT RATE



October 2018
13.3%

October 2017
15.9%

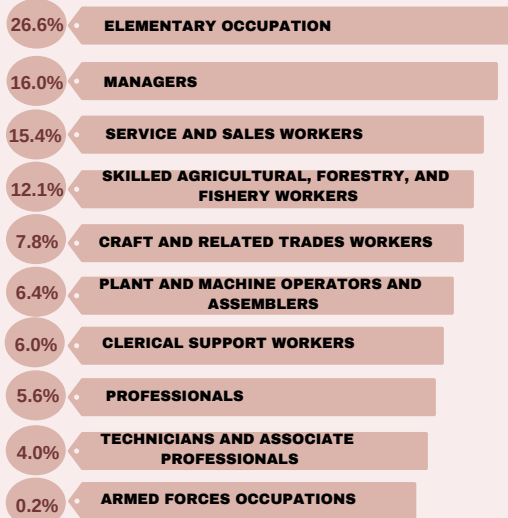
UNEMPLOYMENT RATE



October 2018
5.1%

October 2017
5.0%

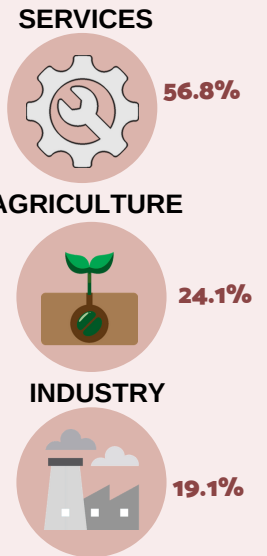
PERCENT DISTRIBUTION OF EMPLOYED PERSONS BY MAJOR OCCUPATION GROUP



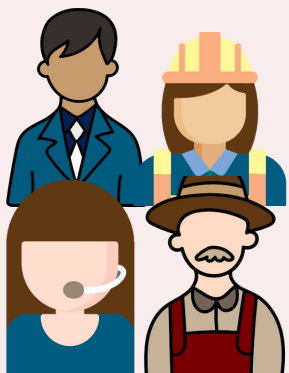
REGIONS WITH HIGHEST EMPLOYMENT RATE



PERCENT DISTRIBUTION OF EMPLOYED PERSONS BY SECTOR



PERCENT DISTRIBUTION OF EMPLOYED PERSONS BY CLASS OF WORKER



64.4% Wage and salary workers

26.6% Self-employed without any paid employee

5.7% Unpaid family workers

3.4% Employer in own family-operated farm or business

Full-time workers

Employed persons who worked for 40 hours or more per week
70.8%



Part-time workers

Employed persons who worked for less than 40 hours per week
28.6%



The remaining 0.6% were those with a job but not at work. Workers worked 42.8 hours per week on average.