

ISSN-2012-0451



REPUBLIC OF THE PHILIPPINES
PHILIPPINE STATISTICS AUTHORITY

Performance of Philippine Agriculture

3rd Quarter 2020



TERMS OF USE

Performance of Philippine Agriculture is a publication of the Philippine Statistics Authority (PSA). The PSA reserves exclusive right to reproduce this publication in whatever form. Should any portion of this publication be included in a report/article, the title of the publication and the PSA should be cited as the source of data. The PSA will not be responsible for any information derived from the processing of data contained in this publication.

ISSN-2012-0451
NOVEMBER 2020

FOREWORD

The Philippine Statistics Authority (PSA) releases the Third Quarter 2020 Performance of Philippine Agriculture.

The report covers all agricultural commodities, highlighting 22 commodities for crops, nine (9) commodities for livestock and poultry, and 20 commodities for fisheries. The performance of agriculture is described in terms of the sector's outputs which are valued at constant prices and at current prices.

PSA welcomes comments and suggestions from its data users, clients, and stakeholders for the improvement of this report.



DENNIS S. MAPA, Ph.D.

Undersecretary

National Statistician and Civil Registrar General

Quezon City, Philippines
November 2020

TABLE OF CONTENTS

Foreword	i
Table of Contents	ii
Press Release	iv
Infographics	v
Highlights	1
List of Tables	
Table 1a. Value of Production in Agriculture at Constant 2018 Prices First Quarter 2018 to Third Quarter 2020; January to September 2018 to 2020	3
Table 1b. Value of Crop Production at Constant 2018 Prices First Quarter 2018 to Third Quarter 2020; January to September 2018 to 2020	4
Table 1c. Value of Livestock and Poultry Production at Constant 2018 Prices First Quarter 2018 to Third Quarter 2020; January to September 2018 to 2020	5
Table 1d. Value of Fisheries Production at Constant 2018 Prices First Quarter 2018 to Third Quarter 2020; January to September 2018 to 2020	6
Table 2a. Growth Rates of Value of Production in Agriculture at Constant 2018 Prices First Quarter 2018 to Third Quarter 2020; January to September 2018 to 2020	7
Table 2b. Growth Rates of Value of Crop Production at Constant 2018 Prices First Quarter 2018 to Third Quarter 2020; January to September 2018 to 2020	8
Table 2c. Growth Rates of Value of Livestock and Poultry Production at Constant 2018 Prices First Quarter 2018 to Third Quarter 2020; January to September 2018 to 2020	9
Table 2d. Growth Rates of Value of Fisheries Production at Constant 2018 Prices First Quarter 2018 to Third Quarter 2020; January to September 2018 to 2020	10
Table 3a. Percentage Distribution of Value of Production in Agriculture at Constant 2018 Prices First Quarter 2018 to Third Quarter 2020; January to September 2018 to 2020	11
Table 3b. Percentage Distribution of Value of Crop Production at Constant 2018 Prices First Quarter 2018 to Third Quarter 2020; January to September 2018 to 2020	12
Table 3c. Percentage Distribution of Value of Livestock and Poultry Production at Constant 2018 Prices First Quarter 2018 to Third Quarter 2020; January to September 2018 to 2020	13
Table 3d. Percentage Distribution of Value of Fisheries Production at Constant 2018 Prices First Quarter 2018 to Third Quarter 2020; January to September 2018 to 2020	14
Table 4a. Value of Production in Agriculture at Current Prices First Quarter 2018 to Third Quarter 2020; January to September 2018 to 2020	15
Table 4b. Value of Crop Production at Current Prices First Quarter 2018 to Third Quarter 2020; January to September 2018 to 2020	16
Table 4c. Value of Livestock and Poultry Production at Current Prices First Quarter 2018 to Third Quarter 2020; January to September 2018 to 2020	17
Table 4d. Value of Fisheries Production at Current Prices First Quarter 2018 to Third Quarter 2020; January to September 2018 to 2020	18

TABLE OF CONTENTS

Table 5a.	Growth Rates of Value of Production in Agriculture at Current Prices First Quarter 2018 to Third Quarter 2020; January to September 2018 to 2020	19
Table 5b.	Growth Rates of Value of Crop Production at Current Prices First Quarter 2018 to Third Quarter 2020; January to September 2018 to 2020	20
Table 5c.	Growth Rates of Value of Livestock and Poultry Production at Current Prices First Quarter 2018 to Third Quarter 2020; January to September 2018 to 2020	21
Table 5d.	Growth Rates of Value of Fisheries Production at Current Prices First Quarter 2018 to Third Quarter 2020; January to September 2018 to 2020	22
Table 6a.	Percentage Distribution of Value of Production in Agriculture at Current Prices First Quarter 2018 to Third Quarter 2020; January to September 2018 to 2020	23
Table 6b.	Percentage Distribution of Value of Crop Production at Current Prices First Quarter 2018 to Third Quarter 2020; January to September 2018 to 2020	24
Table 6c.	Percentage Distribution of Value of Livestock and Poultry Production at Current Prices First Quarter 2018 to Third Quarter 2020; January to September 2018 to 2020	25
Table 6d.	Percentage Distribution of Value of Fisheries Production at Current Prices First Quarter 2018 to Third Quarter 2020; January to September 2018 to 2020	26
Table 7a.	Volume of Crop Production First Quarter 2018 to Third Quarter 2020; January to September 2018 to 2020	27
Table 7b.	Volume of Livestock and Poultry Production First Quarter 2018 to Third Quarter 2020; January to September 2018 to 2020	28
Table 7c.	Volume of Fisheries Production First Quarter 2018 to Third Quarter 2020; January to September 2018 to 2020	29
Table 8a.	Growth Rates of Volume of Crop Production First Quarter 2018 to Third Quarter 2020; January to September 2018 to 2020	30
Table 8b.	Growth Rates of Volume of Livestock and Poultry Production First Quarter 2018 to Third Quarter 2020; January to September 2018 to 2020	31
Table 8c.	Growth Rates of Volume of Fisheries Production First Quarter 2018 to Third Quarter 2020; January to September 2018 to 2020	32
Table 9a.	Average Farmgate Prices of Crops First Quarter 2018 to Third Quarter 2020; January to September 2018 to 2020	33
Table 9b.	Average Farmgate Prices of Livestock and Poultry First Quarter 2018 to Third Quarter 2020; January to September 2018 to 2020	34
Table 9c.	Average Farmgate Prices of Fisheries First Quarter 2018 to Third Quarter 2020; January to September 2018 to 2020	35
Table 10a.	Growth Rates of Average Farmgate Prices of Crops First Quarter 2018 to Third Quarter 2020; January to September 2018 to 2020	36
Table 10b.	Growth Rates of Average Farmgate Prices of Livestock and Poultry First Quarter 2018 to Third Quarter 2020; January to September 2018 to 2020	37
Table 10c.	Growth Rates of Average Farmgate Prices of Fisheries First Quarter 2018 to Third Quarter 2020; January to September 2018 to 2020	38



REPUBLIC OF THE PHILIPPINES
PHILIPPINE STATISTICS AUTHORITY

PRESS RELEASE

Agricultural production posts a 0.7 percent growth in the third quarter of 2020

Date of Release: 09 November 2020
 Reference No. 2020- 349

Agricultural production grew by 0.7 percent in the third quarter of 2020. This was due to the increases in crop and fisheries production. On the other hand, declines in outputs were recorded for livestock and poultry.

Crop production, which contributed 52.7 percent to the total agricultural output, went up by 4.8 percent. Palay and corn production improved by 15.2 percent and 3.5 percent, respectively.

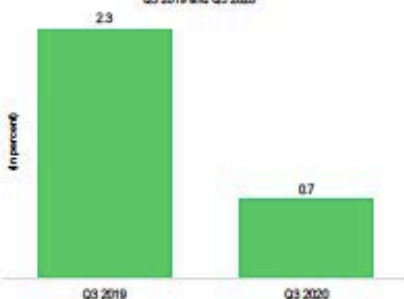
Livestock production decreased by -7.8 percent. It accounted for 17.5 percent of the total agricultural output. Hog exhibited a -7.7 percent drop in output.

Poultry production, which shared 14.0 percent in the total agricultural output, was -3.8 percent lower during the period. Production of chicken was down by -7.2 percent.

Fisheries registered a 1.9 percent output increment. It contributed 15.8 percent to the total agricultural production. Higher production growths were noted for bigeye tuna at 39.9 percent, *Bali sardinella* at 31.5 percent, and blue crab at 25.5 percent.

At current prices, the value of agricultural production amounted to PhP 404.6 billion, higher by 4.1 percent from the previous year's level.

Figure 1. Value of Production in Agriculture at Constant 2018 Prices
 Growth Rates
 Q3 2019 and Q3 2020



Source: Philippine Statistics Authority

DENNIS S. MAPA, Ph.D.
 Undersecretary
 National Statistician and Civil Registrar General



Management
 System
 ISO 9001:2015
 PHILSTAT



PSA Complex, East Avenue, Diliman, Quezon City, Philippines 1101
 Telephone: (632) 8938-5267
www.psa.gov.ph



PERFORMANCE OF PHILIPPINE AGRICULTURE

Third Quarter 2020



VALUE OF PRODUCTION IN AGRICULTURE

AT CONSTANT 2018 PRICES
(GROWTH RATES)



AGRICULTURE
↑ 0.7%



CROPS
↑ 4.8%



POULTRY
↓ -3.8%



LIVESTOCK
↓ -7.6%



FISHERIES
↑ 1.9%

VALUE OF PRODUCTION IN AGRICULTURE

AT CURRENT PRICES
(LEVELS AND GROWTH RATES)

AGRICULTURE PHP 404.6 BILLION ↑ 4.1%

CROPS PHP 211.1 BILLION ↑ 10.8%

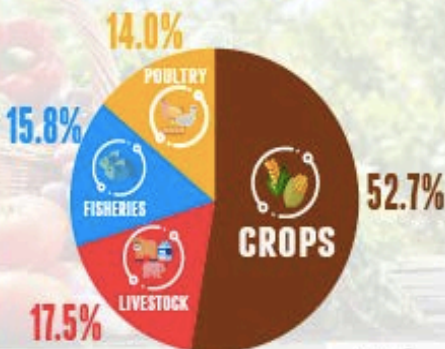
LIVESTOCK PHP 71.4 BILLION ↓ -1.6%

POULTRY PHP 58.7 BILLION ↓ -4.4%

FISHERIES PHP 63.4 BILLION ↓ -0.9%

VALUE OF PRODUCTION IN AGRICULTURE

AT CONSTANT 2018 PRICES
(PERCENTAGE DISTRIBUTION)



CSA



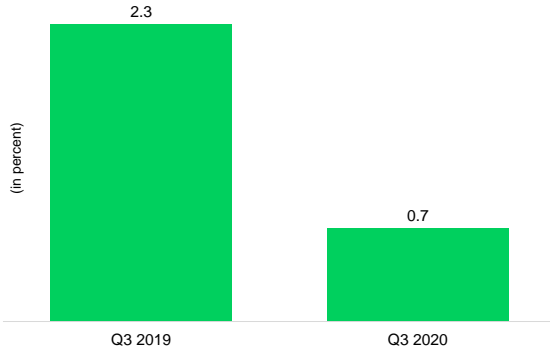
PERFORMANCE OF
PHILIPPINE AGRICULTURE



PERFORMANCE OF PHILIPPINE AGRICULTURE THIRD QUARTER 2020

HIGHLIGHTS

Figure 1. Value of Production in Agriculture at Constant 2018 Prices
Growth Rates
Q3 2019 and Q3 2020



Source: Philippine Statistics Authority

In the third quarter of 2020, agricultural production inched up by 0.7 percent. Increases in production were noted for crops and fisheries during the period. However, livestock and poultry posted reductions in outputs (Table 2a and Figure 1). At current prices, the value of agricultural production at PhP 404.6 billion was 4.1 percent higher than the previous year's level (Table 4a and Table 5a). *From January 2020 to September 2020, agricultural production declined by -0.2 percent (Table 2a).*

Crop production grew by 4.8 percent. It contributed 52.7 percent to the total agricultural output. The production levels of palay and corn were up by 15.2 percent and 3.5 percent, respectively. Double-digit production growths were noted for sugarcane at 23.8 percent and cacao at 12.0 percent. Output increases were also recorded for potato at 7.5 percent, eggplant at 3.4 percent, mungo at 3.0 percent, sweet potato at 2.7 percent, and mango at 2.1 percent.

Meanwhile, double-digit contractions in production were registered for tobacco at -30.1 percent and calamansi at -16.9 percent. Outputs were lower for pineapple by -8.6 percent, cabbage by -5.0 percent, rubber by -4.0 percent, tomato by -1.4 percent, banana by -1.3 percent, and onion by -1.2 percent. Production declines ranging from -0.2 percent to -1.1 percent were observed for cassava, abaca, coffee, ampalaya, and coconut. Collectively, production of "other crops" grew by 0.4 percent.

At current prices, the value of crop production amounted to PhP 211.1 billion or 10.8 percent higher as compared to the previous year's record. *From January 2020 to September 2020, crops posted a 2.3 percent improvement in production.*

Livestock production, which accounted for 17.5 percent of the total agricultural output, was down by -7.6 percent during the period. Hog recorded a reduction in output at -7.7 percent. Likewise, production of cattle and carabao dropped by -10.7 percent and by -6.3 percent, respectively. Outputs were up for dairy by 16.0 percent and goat by 0.4 percent. At current prices, the value of livestock production at PhP 71.4 billion represented a -1.6 percent decline this quarter. *For the first nine (9) months of 2020, livestock production declined by -5.5 percent.*

Poultry production decreased by -3.8 percent. It shared 14.0 percent in the total agricultural production. Chicken production contracted by -7.2 percent this period. On the other hand, duck had 2.3 percent increment in output. Production improved by 6.0 percent for chicken eggs and by 3.1 percent for duck eggs. At current prices, the value of poultry production amounted to PhP 58.7 billion, down by -4.4 percent from the previous year's level. *From January 2020 to September 2020, poultry recorded a -2.8 percent drop in output.*

Fisheries production, which shared 15.8 percent in the total agricultural output, grew by 1.9 percent. Higher output increases were noted for bigeye tuna at 39.9 percent, *Bali sardinella* at 31.5 percent, blue crab 25.5 at percent, cavalla at 18.9 percent, yellowfin tuna at 16.1 percent, frigate tuna at 13.6 percent, and roundscad at 12.8 percent. Improved production levels were also registered for grouper at 2.5 percent, skipjack at 0.3 percent, and squid at 0.03 percent.

Meanwhile, fimbriated sardines and tiger prawn posted double-digit reductions in outputs by -21.7 percent and -11.3 percent, respectively. Decreases in production were reported in the following: mudcrab by -9.7 percent, milkfish by -6.1 percent, slipmouth by -4.3 percent, indian mackerel by -3.7 percent, seaweed by -1.1 percent, and big-eyed scad by -1.0 percent. Threadfin bream and tilapia had less than -1.0 percent decline in outputs. For "other fisheries", production went up by 2.1 percent. At current prices, the value of fisheries production which amounted to PhP 63.4 billion was lower by -0.9 percent this quarter. *In the first three quarters of 2020, fisheries production increased by 0.2 percent.*

Table 1a. Value of Production in Agriculture at Constant 2018 Prices
 First Quarter 2018 to Third Quarter 2020; January to September 2018 to 2020
 (in Million PhP)

Subsector	2018				2019				2020			January to September		
	Q1	Q2	Q3	Q4	Q1	Q2	Q3	Q4	Q1	Q2	Q3	2018	2019	2020
Crops	248,255	239,284	207,002	283,403	245,801	226,028	210,053	286,230	239,871	237,367	220,064	694,541	681,881	697,302
Livestock	77,296	81,037	77,950	95,138	78,208	83,586	79,228	87,083	78,082	76,486	73,222	236,282	241,021	227,789
Poultry	57,398	57,979	56,107	60,170	60,474	60,403	60,813	63,591	60,574	57,535	58,531	171,485	181,690	176,640
Fisheries	58,908	68,267	64,358	73,816	59,120	70,292	64,739	75,263	57,520	70,982	65,984	191,533	194,151	194,485
AGRICULTURE	441,857	446,567	405,418	512,527	443,602	440,309	414,833	512,168	436,047	442,369	417,801	1,293,841	1,298,744	1,296,217

Note: Details may not add up to totals due to rounding

Source: Philippine Statistics Authority

Table 1b. Value of Crop Production at Constant 2018 Prices
 First Quarter 2018 to Third Quarter 2020; January to September 2018 to 2020
 (in Million PhP)

Subsector/ Commodity	2018				2019				2020			January to September		
	Q1	Q2	Q3	Q4	Q1	Q2	Q3	Q4	Q1	Q2	Q3	2018	2019	2020
Crops	248,255	239,284	207,002	283,403	245,801	226,028	210,053	286,230	239,871	237,367	220,064	694,541	681,881	697,302
Palay	91,376	82,789	70,056	140,788	87,301	77,978	66,879	147,428	84,230	83,497	77,068	244,221	232,158	244,795
Corn	34,300	18,405	31,441	25,016	33,589	16,799	38,821	22,975	31,800	19,384	40,165	84,146	89,208	91,348
Banana	36,170	39,908	40,558	41,661	35,674	38,253	39,901	41,068	34,807	37,740	39,398	116,636	113,828	111,945
Coconut	24,639	22,095	23,829	21,206	24,660	21,992	23,997	21,327	23,609	21,592	23,723	70,562	70,649	68,924
Mango	5,738	18,045	2,288	963	5,574	19,014	2,308	969	5,525	19,054	2,356	26,070	26,896	26,935
Sugarcane	14,537	11,170	1,758	13,298	16,655	4,511	703	11,324	17,318	8,860	870	27,465	21,869	27,048
Pineapple	6,504	9,486	8,336	6,187	6,501	9,551	8,417	6,235	6,555	9,687	7,694	24,325	24,469	23,936
Cassava	2,710	4,097	5,169	5,886	2,558	3,802	5,099	5,923	2,564	3,657	5,090	11,976	11,458	11,311
Rubber	1,216	2,907	2,688	3,041	1,175	3,029	2,588	3,234	1,175	2,825	2,485	6,811	6,791	6,485
Sweet Potato	1,829	2,530	2,366	2,234	1,852	2,466	2,400	2,248	1,922	2,587	2,465	6,725	6,719	6,975
Onion	4,996	1,389	2	357	6,135	2,135	1	361	6,585	1,990	1	6,387	8,272	8,576
Eggplant	2,515	2,852	1,309	736	2,562	2,942	1,308	746	2,399	2,889	1,352	6,675	6,812	6,641
Coffee	1,048	386	300	1,546	976	361	299	1,620	979	350	297	1,734	1,637	1,627
Tobacco	1,034	2,489	280	250	1,000	2,596	316	129	996	2,682	221	3,804	3,912	3,899
Abaca	1,040	1,269	1,340	1,334	1,064	1,269	1,408	1,287	1,004	1,228	1,399	3,649	3,741	3,631
Tomato	1,315	1,406	659	481	1,367	1,376	672	478	1,351	1,421	663	3,380	3,416	3,435
Potato	767	311	512	2,641	766	300	465	2,672	747	284	500	1,590	1,530	1,530
Ampalaya	709	989	914	696	739	1,020	878	737	736	1,025	870	2,611	2,637	2,632
Cabbage	582	487	617	1,247	585	487	619	1,420	612	484	588	1,686	1,691	1,683
Calamansi	472	484	883	615	475	475	1,100	604	423	382	914	1,840	2,050	1,720
Mongo	458	1,342	72	173	470	1,308	73	173	498	1,321	75	1,872	1,850	1,894
Cacao	133	151	168	202	139	158	187	212	162	167	209	452	483	538
Other Crops	14,168	14,298	11,460	12,845	13,983	14,207	11,615	13,059	13,874	14,260	11,661	39,926	39,805	39,795

Note: Details may not add up to totals due to rounding

Source: Philippine Statistics Authority

Table 1c. Value of Livestock and Poultry Production at Constant 2018 Prices
 First Quarter 2018 to Third Quarter 2020; January to September 2018 to 2020
 (in Million PhP)

Subsector/ Commodity	2018				2019				2020			January to September		
	Q1	Q2	Q3	Q4	Q1	Q2	Q3	Q4	Q1	Q2	Q3	2018	2019	2020
Livestock	77,296	81,037	77,950	95,138	78,208	83,586	79,228	87,083	78,082	76,486	73,222	236,282	241,021	227,789
Hog	65,112	67,636	65,569	79,215	66,125	70,408	66,851	71,419	66,271	66,756	61,675	198,316	203,384	194,702
Cattle	6,497	7,152	6,536	8,464	6,502	7,016	6,524	8,312	6,429	4,950	5,828	20,185	20,042	17,208
Carabao	2,903	3,580	2,900	4,265	2,829	3,506	2,898	4,180	2,774	2,575	2,714	9,383	9,233	8,063
Goat	2,554	2,429	2,717	2,954	2,518	2,415	2,713	2,927	2,362	1,950	2,723	7,700	7,645	7,035
Dairy	231	239	228	239	234	240	243	245	245	255	282	698	717	782
Poultry	57,398	57,979	56,107	60,170	60,474	60,403	60,813	63,591	60,574	57,535	58,531	171,485	181,690	176,640
Chicken	41,791	43,509	41,085	44,339	43,606	44,864	44,571	46,170	43,099	41,374	41,372	126,385	133,040	125,845
Duck	929	573	754	869	931	548	776	797	874	505	794	2,256	2,255	2,173
Chicken Eggs	13,659	12,675	13,240	13,782	14,859	13,676	14,411	15,342	15,503	14,353	15,278	39,575	42,946	45,134
Duck Eggs	1,019	1,222	1,028	1,180	1,078	1,315	1,055	1,283	1,098	1,303	1,087	3,269	3,449	3,488

Note: Details may not add up to totals due to rounding

Source: Philippine Statistics Authority

Table 1d. Value of Fisheries Production at Constant 2018 Prices
 First Quarter 2018 to Third Quarter 2020; January to September 2018 to 2020
 (in Million PhP)

Subsector/ Commodity	2018				2019				2020			January to September		
	Q1	Q2	Q3	Q4	Q1	Q2	Q3	Q4	Q1	Q2	Q3	2018	2019	2020
Fisheries	58,908	68,267	64,358	73,816	59,120	70,292	64,739	75,263	57,520	70,982	65,984	191,533	194,151	194,485
Milkfish (Bangus)	6,831	10,630	10,610	13,154	6,508	10,480	12,001	13,812	7,061	10,712	11,272	28,071	28,988	29,045
Tilapia	6,906	6,173	4,629	6,546	6,686	6,211	4,352	7,025	6,664	5,956	4,338	17,707	17,250	16,958
Tiger prawn (Sugpo)	4,220	5,888	4,213	7,464	4,183	6,161	3,925	8,109	4,111	6,300	3,480	14,321	14,268	13,891
Skipjack (Gulyasan)	4,694	4,045	4,176	4,331	4,801	3,710	4,513	4,827	3,764	4,444	4,528	12,915	13,024	12,736
Roundscad (Galunggong)	2,543	3,512	3,101	2,452	3,468	3,950	3,000	2,294	3,205	4,699	3,385	9,156	10,418	11,289
Seaweed	2,261	2,124	2,097	4,437	2,245	2,062	2,198	4,606	2,226	2,084	2,173	6,482	6,505	6,483
Yellowfin tuna (Tambakol/Bariles)	2,867	2,466	2,178	2,533	2,557	3,200	2,065	2,790	2,078	3,322	2,396	7,511	7,821	7,796
Mudcrab (Alimango)	2,989	1,747	1,865	2,681	2,928	1,866	2,036	2,679	3,212	1,741	1,839	6,601	6,829	6,792
Frigate tuna (Tulingan)	2,024	2,504	2,238	1,984	1,940	2,777	2,082	1,903	1,864	2,525	2,365	6,766	6,798	6,753
Big-eyed scad (Matangbaka)	1,913	2,299	2,310	2,153	1,820	2,339	2,169	2,224	1,894	2,030	2,148	6,521	6,327	6,072
<i>Bali sardinella</i> (Tamban)	1,254	2,567	2,027	1,287	1,131	2,300	2,027	1,357	1,563	3,355	2,667	5,849	5,458	7,585
Squid (Pusit)	1,244	1,596	1,323	1,473	1,184	1,721	1,280	1,400	1,205	1,461	1,280	4,163	4,184	3,946
Blue crab (Alimasag)	902	1,428	1,821	1,425	832	1,359	1,496	1,181	1,011	1,252	1,879	4,151	3,687	4,142
Bigeye tuna (Tambakol/ Bariles)	1,274	1,377	1,443	1,383	627	747	949	798	647	731	1,329	4,094	2,323	2,706
Grouper (Lapu-lapu)	584	674	2,577	823	684	780	3,075	770	665	762	3,152	3,836	4,539	4,578
Indian mackerel (Alumahan)	879	1,411	1,101	1,204	1,095	1,433	1,160	1,268	995	1,094	1,117	3,391	3,688	3,205
Threadfin bream (Bisugo)	1,023	1,095	1,137	1,148	1,165	1,144	1,348	1,372	1,226	1,078	1,339	3,255	3,657	3,642
Slipmouth (Sapsap)	600	711	810	872	664	695	730	814	517	574	699	2,122	2,090	1,790
Cavalla (Talakitok)	660	761	741	761	767	769	709	747	722	830	842	2,161	2,244	2,395
Fimbriated sardines (Tunsoy)	672	720	627	719	706	647	657	440	522	350	514	2,019	2,010	1,386
Other Fisheries	12,568	14,539	13,333	14,984	13,130	15,942	12,969	14,848	12,369	15,683	13,242	40,441	42,041	41,294

Note: Details may not add up to totals due to rounding

Source: Philippine Statistics Authority

Table 2a. Growth Rates of Value of Production in Agriculture at Constant 2018 Prices
 First Quarter 2018 to Third Quarter 2020; January to September 2018 to 2020
 (in percent)

Subsector	2018-2019				2019-2020			January to September	
	Q1	Q2	Q3	Q4	Q1	Q2	Q3	2018-2019	2019-2020
Crops	-1.0	-5.5	1.5	1.0	-2.4	5.0	4.8	-1.8	2.3
Livestock	1.2	3.1	1.6	-8.5	-0.2	-8.5	-7.6	2.0	-5.5
Poultry	5.4	4.2	8.4	5.7	0.2	-4.7	-3.8	6.0	-2.8
Fisheries	0.4	3.0	0.6	2.0	-2.7	1.0	1.9	1.4	0.2
AGRICULTURE	0.4	-1.4	2.3	-0.1	-1.7	0.5	0.7	0.4	-0.2

Source: Philippine Statistics Authority

Table 2b. Growth Rates of Value of Crop Production at Constant 2018 Prices
 First Quarter 2018 to Third Quarter 2020; January to September 2018 to 2020
 (in percent)

Subsector/ Commodity	2018-2019				2019-2020			January to September	
	Q1	Q2	Q3	Q4	Q1	Q2	Q3	2018-2019	2019-2020
Crops	-1.0	-5.5	1.5	1.0	-2.4	5.0	4.8	-1.8	2.3
Palay	-4.5	-5.8	-4.5	4.7	-3.5	7.1	15.2	-4.9	5.4
Corn	-2.1	-8.7	23.5	-8.2	-5.3	15.4	3.5	6.0	2.4
Banana	-1.4	-4.1	-1.6	-1.4	-2.4	-1.3	-1.3	-2.4	-1.7
Coconut	0.1	-0.5	0.7	0.6	-4.3	-1.8	-1.1	0.1	-2.4
Mango	-2.8	5.4	0.9	0.6	-0.9	0.2	2.1	3.2	0.1
Sugarcane	14.6	-59.6	-60.0	-14.8	4.0	96.4	23.8	-20.4	23.7
Pineapple	-0.04	0.7	1.0	0.8	0.8	1.4	-8.6	0.6	-2.2
Cassava	-5.6	-7.2	-1.4	0.6	0.2	-3.8	-0.2	-4.3	-1.3
Rubber	-3.4	4.2	-3.7	6.4	0.04	-6.7	-4.0	-0.3	-4.5
Sweet Potato	1.3	-2.5	1.4	0.6	3.8	4.9	2.7	-0.1	3.8
Onion	22.8	53.7	-13.7	1.1	7.3	-6.8	-1.2	29.5	3.7
Eggplant	1.9	3.2	-0.1	1.4	-6.4	-1.8	3.4	2.0	-2.5
Coffee	-6.9	-6.3	-0.4	4.8	0.3	-3.1	-0.7	-5.6	-0.6
Tobacco	-3.3	4.3	12.8	-48.4	-0.5	3.3	-30.1	2.9	-0.4
Abaca	2.3	0.1	5.0	-3.5	-5.6	-3.3	-0.6	2.5	-2.9
Tomato	3.9	-2.1	2.1	-0.6	-1.1	3.2	-1.4	1.1	0.6
Potato	-0.2	-3.7	-9.2	1.2	-2.5	-5.3	7.5	-3.8	0.02
Ampalaya	4.4	3.1	-3.9	5.8	-0.4	0.5	-0.8	1.0	-0.2
Cabbage	0.5	-0.05	0.3	14.0	4.5	-0.6	-5.0	0.3	-0.5
Calamansi	0.6	-2.0	24.6	-1.9	-10.9	-19.5	-16.9	11.5	-16.1
Mongo	2.6	-2.6	0.6	-0.3	6.0	1.0	3.0	-1.2	2.4
Cacao	4.4	4.4	11.4	4.9	16.7	5.6	12.0	7.0	11.3
Other Crops	-1.3	-0.6	1.4	1.7	-0.8	0.4	0.4	-0.3	-0.02

Source: Philippine Statistics Authority

Table 2c. Growth Rates of Value of Livestock and Poultry Production at Constant 2018 Prices
 First Quarter 2018 to Third Quarter 2020; January to September 2018 to 2020
 (in percent)

Subsector/ Commodity	2018-2019				2019-2020			January to September	
	Q1	Q2	Q3	Q4	Q1	Q2	Q3	2018-2019	2019-2020
Livestock	1.2	3.1	1.6	-8.5	-0.2	-8.5	-7.6	2.0	-5.5
Hog	1.6	4.1	2.0	-9.8	0.2	-5.2	-7.7	2.6	-4.3
Cattle	0.1	-1.9	-0.2	-1.8	-1.1	-29.5	-10.7	-0.7	-14.1
Carabao	-2.5	-2.1	-0.1	-2.0	-2.0	-26.5	-6.3	-1.6	-12.7
Goat	-1.4	-0.6	-0.2	-0.9	-6.2	-19.3	0.4	-0.7	-8.0
Dairy	1.4	0.6	6.5	2.4	4.9	6.0	16.0	2.8	9.0
Poultry	5.4	4.2	8.4	5.7	0.2	-4.7	-3.8	6.0	-2.8
Chicken	4.3	3.1	8.5	4.1	-1.2	-7.8	-7.2	5.3	-5.4
Duck	0.3	-4.5	2.9	-8.3	-6.2	-7.8	2.3	-0.04	-3.6
Chicken Eggs	8.8	7.9	8.8	11.3	4.3	4.9	6.0	8.5	5.1
Duck Eggs	5.8	7.6	2.6	8.7	1.8	-1.0	3.1	5.5	1.1

Source: Philippine Statistics Authority

Table 2d. Growth Rates of Value of Fisheries Production at Constant 2018 Prices
 First Quarter 2018 to Third Quarter 2020; January to September 2018 to 2020
 (in percent)

Subsector/ Commodity	2018-2019				2019-2020			January to September	
	Q1	Q2	Q3	Q4	Q1	Q2	Q3	2018-2019	2019-2020
Fisheries	0.4	3.0	0.6	2.0	-2.7	1.0	1.9	1.4	0.2
Milkfish (Bangus)	-4.7	-1.4	13.1	5.0	8.5	2.2	-6.1	3.3	0.2
Tilapia	-3.2	0.6	-6.0	7.3	-0.3	-4.1	-0.3	-2.6	-1.7
Tiger prawn (Sugpo)	-0.9	4.6	-6.9	8.6	-1.7	2.3	-11.3	-0.4	-2.6
Skipjack (Gulyasan)	2.3	-8.3	8.1	11.4	-21.6	19.8	0.3	0.8	-2.2
Roundscad (Galunggong)	36.4	12.5	-3.3	-6.5	-7.6	18.9	12.8	13.8	8.4
Seaweed	-0.7	-2.9	4.8	3.8	-0.9	1.1	-1.1	0.3	-0.3
Yellowfin tuna (Tambakol/Bariles)	-10.8	29.8	-5.2	10.1	-18.7	3.8	16.1	4.1	-0.3
Mudcrab (Alimango)	-2.0	6.8	9.1	-0.1	9.7	-6.7	-9.7	3.5	-0.5
Frigate tuna (Tulingan)	-4.2	10.9	-7.0	-4.1	-3.9	-9.1	13.6	0.5	-0.7
Big-eyed scad (Matangbaka)	-4.9	1.7	-6.1	3.3	4.1	-13.2	-1.0	-3.0	-4.0
<i>Bali sardinella</i> (Tamban)	-9.9	-10.4	-0.01	5.5	38.2	45.9	31.5	-6.7	39.0
Squid (Pusit)	-4.8	7.8	-3.3	-4.9	1.8	-15.1	0.03	0.5	-5.7
Blue crab (Alimasag)	-7.7	-4.9	-17.8	-17.2	21.5	-7.9	25.5	-11.2	12.3
Bigeye tuna (Tambakol/ Bariles)	-50.8	-45.8	-34.2	-42.3	3.2	-2.1	39.9	-43.2	16.5
Grouper (Lapu-lapu)	17.0	15.7	19.3	-6.5	-2.8	-2.4	2.5	18.3	0.9
Indian mackerel (Alumahan)	24.6	1.6	5.3	5.3	-9.2	-23.6	-3.7	8.8	-13.1
Threadfin bream (Bisugo)	13.8	4.5	18.6	19.5	5.2	-5.8	-0.7	12.3	-0.4
Slipmouth (Sapsap)	10.7	-2.3	-9.9	-6.6	-22.2	-17.4	-4.3	-1.5	-14.4
Cavalla (Talakitok)	16.2	1.1	-4.3	-1.8	-5.8	8.0	18.9	3.9	6.7
Fimbriated sardines (Tunsoy)	5.0	-10.1	4.8	-38.9	-26.0	-45.9	-21.7	-0.4	-31.1
Other Fisheries	4.5	9.6	-2.7	-0.9	-5.8	-1.6	2.1	4.0	-1.8

Source: Philippine Statistics Authority

Table 3a. Percentage Distribution of Value of Production in Agriculture at Constant 2018 Prices
 First Quarter 2018 to Third Quarter 2020; January to September 2018 to 2020
 (in percent)

Subsector	2018				2019				2020			January to September		
	Q1	Q2	Q3	Q4	Q1	Q2	Q3	Q4	Q1	Q2	Q3	2018	2019	2020
Crops	56.2	53.6	51.1	55.3	55.4	51.3	50.6	55.9	55.0	53.7	52.7	53.7	52.5	53.8
Livestock	17.5	18.1	19.2	18.6	17.6	19.0	19.1	17.0	17.9	17.3	17.5	18.3	18.6	17.6
Poultry	13.0	13.0	13.8	11.7	13.6	13.7	14.7	12.4	13.9	13.0	14.0	13.3	14.0	13.6
Fisheries	13.3	15.3	15.9	14.4	13.3	16.0	15.6	14.7	13.2	16.0	15.8	14.8	14.9	15.0
AGRICULTURE	100.0	100.0	100.0	100.0	100.0	100.0	100.0	100.0	100.0	100.0	100.0	100.0	100.0	100.0

Note: Details may not add up to totals due to rounding

Source: Philippine Statistics Authority

Table 3b. Percentage Distribution of Value of Crop Production at Constant 2018 Prices
 First Quarter 2018 to Third Quarter 2020; January to September 2018 to 2020
 (in percent)

Subsector/ Commodity	2018				2019				2020			January to September		
	Q1	Q2	Q3	Q4	Q1	Q2	Q3	Q4	Q1	Q2	Q3	2018	2019	2020
Crops	56.2	53.6	51.1	55.3	55.4	51.3	50.6	55.9	55.0	53.7	52.7	53.7	52.5	53.8
Palay	20.7	18.5	17.3	27.5	19.7	17.7	16.1	28.8	19.3	18.9	18.4	18.9	17.9	18.9
Corn	7.8	4.1	7.8	4.9	7.6	3.8	9.4	4.5	7.3	4.4	9.6	6.5	6.9	7.0
Banana	8.2	8.9	10.0	8.1	8.0	8.7	9.6	8.0	8.0	8.5	9.4	9.0	8.8	8.6
Coconut	5.6	4.9	5.9	4.1	5.6	5.0	5.8	4.2	5.4	4.9	5.7	5.5	5.4	5.3
Mango	1.3	4.0	0.6	0.2	1.3	4.3	0.6	0.2	1.3	4.3	0.6	2.0	2.1	2.1
Sugarcane	3.3	2.5	0.4	2.6	3.8	1.0	0.2	2.2	4.0	2.0	0.2	2.1	1.7	2.1
Pineapple	1.5	2.1	2.1	1.2	1.5	2.2	2.0	1.2	1.5	2.2	1.8	1.9	1.9	1.8
Cassava	0.6	0.9	1.3	1.1	0.6	0.9	1.2	1.2	0.6	0.8	1.2	0.9	0.9	0.9
Rubber	0.3	0.7	0.7	0.6	0.3	0.7	0.6	0.6	0.3	0.6	0.6	0.5	0.5	0.5
Sweet Potato	0.4	0.6	0.6	0.4	0.4	0.6	0.6	0.4	0.4	0.6	0.6	0.5	0.5	0.5
Onion	1.1	0.3	0.0004	0.1	1.4	0.5	0.0003	0.1	1.5	0.4	0.0003	0.5	0.6	0.7
Eggplant	0.6	0.6	0.3	0.1	0.6	0.7	0.3	0.1	0.6	0.7	0.3	0.5	0.5	0.5
Coffee	0.2	0.1	0.1	0.3	0.2	0.1	0.1	0.3	0.2	0.1	0.1	0.1	0.1	0.1
Tobacco	0.2	0.6	0.1	0.05	0.2	0.6	0.1	0.03	0.2	0.6	0.1	0.3	0.3	0.3
Abaca	0.2	0.3	0.3	0.3	0.2	0.3	0.3	0.3	0.2	0.3	0.3	0.3	0.3	0.3
Tomato	0.3	0.3	0.2	0.1	0.3	0.3	0.2	0.1	0.3	0.3	0.2	0.3	0.3	0.3
Potato	0.2	0.1	0.1	0.5	0.2	0.1	0.1	0.5	0.2	0.1	0.1	0.1	0.1	0.1
Ampalaya	0.2	0.2	0.2	0.1	0.2	0.2	0.2	0.1	0.2	0.2	0.2	0.2	0.2	0.2
Cabbage	0.1	0.1	0.2	0.2	0.1	0.1	0.1	0.3	0.1	0.1	0.1	0.1	0.1	0.1
Calamansi	0.1	0.1	0.2	0.1	0.1	0.1	0.3	0.1	0.1	0.1	0.2	0.1	0.2	0.1
Mongo	0.1	0.3	0.02	0.03	0.1	0.3	0.02	0.03	0.1	0.3	0.02	0.1	0.1	0.1
Cacao	0.03	0.03	0.04	0.04	0.03	0.04	0.04	0.04	0.04	0.04	0.1	0.03	0.04	0.04
Other Crops	3.2	3.2	2.8	2.5	3.2	3.2	2.8	2.5	3.2	3.2	2.8	3.1	3.1	3.1

Note: Details may not add up to totals due to rounding

Source: Philippine Statistics Authority

Table 3c. Percentage Distribution of Value of Livestock and Poultry Production at Constant 2018 Prices
 First Quarter 2018 to Third Quarter 2020; January to September 2018 to 2020
 (in percent)

Subsector/ Commodity	2018				2019				2020			January to September		
	Q1	Q2	Q3	Q4	Q1	Q2	Q3	Q4	Q1	Q2	Q3	2018	2019	2020
Livestock	17.5	18.1	19.2	18.6	17.6	19.0	19.1	17.0	17.9	17.3	17.5	18.3	18.6	17.6
Hog	14.7	15.1	16.2	15.5	14.9	16.0	16.1	13.9	15.2	15.1	14.8	15.3	15.7	15.0
Cattle	1.5	1.6	1.6	1.7	1.5	1.6	1.6	1.6	1.5	1.1	1.4	1.6	1.5	1.3
Carabao	0.7	0.8	0.7	0.8	0.6	0.8	0.7	0.8	0.6	0.6	0.6	0.7	0.7	0.6
Goat	0.6	0.5	0.7	0.6	0.6	0.5	0.7	0.6	0.5	0.4	0.7	0.6	0.6	0.5
Dairy	0.1	0.1	0.1	0.05	0.1	0.1	0.1	0.05	0.1	0.1	0.1	0.1	0.1	0.1
Poultry	13.0	13.0	13.8	11.7	13.6	13.7	14.7	12.4	13.9	13.0	14.0	13.3	14.0	13.6
Chicken	9.5	9.7	10.1	8.7	9.8	10.2	10.7	9.0	9.9	9.4	9.9	9.8	10.2	9.7
Duck	0.2	0.1	0.2	0.2	0.2	0.1	0.2	0.2	0.2	0.1	0.2	0.2	0.2	0.2
Chicken Eggs	3.1	2.8	3.3	2.7	3.3	3.1	3.5	3.0	3.6	3.2	3.7	3.1	3.3	3.5
Duck Eggs	0.2	0.3	0.3	0.2	0.2	0.3	0.3	0.3	0.3	0.3	0.3	0.3	0.3	0.3

Note: Details may not add up to totals due to rounding

Source: Philippine Statistics Authority

Table 3d. Percentage Distribution of Value of Fisheries Production at Constant 2018 Prices
 First Quarter 2018 to Third Quarter 2020; January to September 2018 to 2020
 (in percent)

Subsector/ Commodity	2018				2019				2020			January to September		
	Q1	Q2	Q3	Q4	Q1	Q2	Q3	Q4	Q1	Q2	Q3	2018	2019	2020
Fisheries	13.3	15.3	15.9	14.4	13.3	16.0	15.6	14.7	13.2	16.0	15.8	14.8	14.9	15.0
Milkfish (Bangus)	1.5	2.4	2.6	2.6	1.5	2.4	2.9	2.7	1.6	2.4	2.7	2.2	2.2	2.2
Tilapia	1.6	1.4	1.1	1.3	1.5	1.4	1.0	1.4	1.5	1.3	1.0	1.4	1.3	1.3
Tiger prawn (Sugpo)	1.0	1.3	1.0	1.5	0.9	1.4	0.9	1.6	0.9	1.4	0.8	1.1	1.1	1.1
Skipjack (Gulyasan)	1.1	0.9	1.0	0.8	1.1	0.8	1.1	0.9	0.9	1.0	1.1	1.0	1.0	1.0
Roundscad (Galunggong)	0.6	0.8	0.8	0.5	0.8	0.9	0.7	0.4	0.7	1.1	0.8	0.7	0.8	0.9
Seaweed	0.5	0.5	0.5	0.9	0.5	0.5	0.5	0.9	0.5	0.5	0.5	0.5	0.5	0.5
Yellowfin tuna (Tambakol/Bariles)	0.6	0.6	0.5	0.5	0.6	0.7	0.5	0.5	0.5	0.8	0.6	0.6	0.6	0.6
Mudcrab (Alimango)	0.7	0.4	0.5	0.5	0.7	0.4	0.5	0.5	0.7	0.4	0.4	0.5	0.5	0.5
Frigate tuna (Tulingan)	0.5	0.6	0.6	0.4	0.4	0.6	0.5	0.4	0.4	0.6	0.6	0.5	0.5	0.5
Big-eyed scad (Matangbaka)	0.4	0.5	0.6	0.4	0.4	0.5	0.5	0.4	0.4	0.5	0.5	0.5	0.5	0.5
<i>Bali sardinella</i> (Tamban)	0.3	0.6	0.5	0.3	0.3	0.5	0.5	0.3	0.4	0.8	0.6	0.5	0.4	0.6
Squid (Pusit)	0.3	0.4	0.3	0.3	0.3	0.4	0.3	0.3	0.3	0.3	0.3	0.3	0.3	0.3
Blue crab (Alimasag)	0.2	0.3	0.4	0.3	0.2	0.3	0.4	0.2	0.2	0.3	0.4	0.3	0.3	0.3
Bigeye tuna (Tambakol/ Bariles)	0.3	0.3	0.4	0.3	0.1	0.2	0.2	0.2	0.1	0.2	0.3	0.3	0.2	0.2
Grouper (Lapu-lapu)	0.1	0.2	0.6	0.2	0.2	0.2	0.7	0.2	0.2	0.2	0.8	0.3	0.3	0.4
Indian mackerel (Alumahan)	0.2	0.3	0.3	0.2	0.2	0.3	0.3	0.2	0.2	0.2	0.3	0.3	0.3	0.2
Threadfin bream (Bisugo)	0.2	0.2	0.3	0.2	0.3	0.3	0.3	0.3	0.3	0.2	0.3	0.3	0.3	0.3
Slipmouth (Sapsap)	0.1	0.2	0.2	0.2	0.1	0.2	0.2	0.2	0.1	0.1	0.2	0.2	0.2	0.1
Cavalla (Talakitok)	0.1	0.2	0.2	0.1	0.2	0.2	0.2	0.1	0.2	0.2	0.2	0.2	0.2	0.2
Fimbriated sardines (Tunsoy)	0.2	0.2	0.2	0.1	0.2	0.1	0.2	0.1	0.1	0.1	0.1	0.2	0.2	0.1
Other Fisheries	2.8	3.3	3.3	2.9	3.0	3.6	3.1	2.9	2.8	3.5	3.2	3.1	3.2	3.2

Note: Details may not add up to totals due to rounding

Source: Philippine Statistics Authority

Table 4a. Value of Production in Agriculture at Current Prices
 First Quarter 2018 to Third Quarter 2020; January to September 2018 to 2020
 (in Million PhP)

Subsector	2018				2019				2020			January to September		
	Q1	Q2	Q3	Q4	Q1	Q2	Q3	Q4	Q1	Q2	Q3	2018	2019	2020
Crops	248,255	239,284	207,002	283,403	231,098	209,380	190,561	253,402	226,755	237,872	211,109	694,541	631,039	675,736
Livestock	77,296	81,037	77,950	95,138	77,450	79,646	72,530	74,077	72,332	73,798	71,360	236,282	229,627	217,490
Poultry	57,398	57,979	56,107	60,170	54,952	56,541	61,432	73,111	59,634	55,091	58,722	171,485	172,925	173,447
Fisheries	58,908	68,267	64,358	73,816	63,239	75,010	63,953	79,450	62,782	73,208	63,379	191,533	202,201	199,370
AGRICULTURE	441,857	446,567	405,418	512,527	426,739	420,577	388,476	480,041	421,503	439,969	404,570	1,293,841	1,235,792	1,266,042

Note: Details may not add up to totals due to rounding

Source: Philippine Statistics Authority

Table 4b. Value of Crop Production at Current Prices
 First Quarter 2018 to Third Quarter 2020; January to September 2018 to 2020
 (in Million PHP)

Subsector/ Commodity	2018				2019				2020			January to September		
	Q1	Q2	Q3	Q4	Q1	Q2	Q3	Q4	Q1	Q2	Q3	2018	2019	2020
Crops	248,255	239,284	207,002	283,403	231,098	209,380	190,561	253,402	226,755	237,872	211,109	694,541	631,039	675,736
Palay	91,376	82,789	70,056	140,788	80,724	64,511	49,100	110,711	68,746	76,148	58,193	244,221	194,335	203,087
Corn	34,300	18,405	31,441	25,016	33,593	16,302	35,904	18,660	28,184	16,485	34,950	84,146	85,798	79,619
Banana	36,170	39,908	40,558	41,661	38,658	45,000	47,705	49,375	44,472	54,395	58,298	116,636	131,363	157,165
Coconut	24,639	22,095	23,829	21,206	16,196	16,627	18,955	20,248	17,628	18,689	23,307	70,562	51,777	59,625
Mango	5,738	18,045	2,288	963	4,635	15,925	2,423	1,115	5,220	17,958	2,439	26,070	22,983	25,617
Sugarcane	14,537	11,170	1,758	13,298	19,765	4,927	447	9,863	18,932	8,107	391	27,465	25,139	27,431
Pineapple	6,504	9,486	8,336	6,187	5,721	7,131	6,587	7,366	6,511	6,606	5,783	24,325	19,438	18,899
Cassava	2,710	4,097	5,169	5,886	3,259	4,752	6,945	6,529	3,815	5,670	6,889	11,976	14,956	16,374
Rubber	1,216	2,907	2,688	3,041	1,034	3,331	2,710	3,666	1,061	2,043	2,062	6,811	7,075	5,166
Sweet Potato	1,829	2,530	2,366	2,234	1,881	2,891	2,684	2,352	2,112	3,491	2,712	6,725	7,455	8,315
Onion	4,996	1,389	2	357	4,131	1,086	1	379	6,688	2,047	1	6,387	5,218	8,737
Eggplant	2,515	2,852	1,309	736	2,296	2,109	1,018	832	2,493	2,296	651	6,675	5,423	5,439
Coffee	1,048	386	300	1,546	952	339	289	1,443	964	336	258	1,734	1,580	1,558
Tobacco	1,034	2,489	280	250	1,063	2,748	485	267	1,000	2,827	607	3,804	4,296	4,434
Abaca	1,040	1,269	1,340	1,334	1,085	1,322	1,414	1,194	1,025	1,243	1,450	3,649	3,821	3,718
Tomato	1,315	1,406	659	481	1,060	1,725	511	532	1,471	1,384	614	3,380	3,296	3,468
Potato	767	311	512	2,641	626	365	553	2,418	884	502	543	1,590	1,544	1,929
Ampalaya	709	989	914	696	681	1,122	711	829	653	1,035	632	2,611	2,514	2,320
Cabbage	582	487	617	1,247	469	501	242	1,070	264	497	142	1,686	1,212	903
Calamansi	472	484	883	615	347	572	1,063	644	350	351	756	1,840	1,982	1,457
Mongo	458	1,342	72	173	483	1,248	90	200	553	1,390	90	1,872	1,820	2,033
Cacao	133	151	168	202	161	177	209	241	186	188	224	452	547	598
Other Crops	14,168	14,298	11,460	12,845	12,277	14,670	10,517	13,468	13,542	14,184	10,117	39,926	37,464	37,843

Note: Details may not add up to totals due to rounding

Source: Philippine Statistics Authority

Table 4c. Value of Livestock and Poultry Production at Current Prices
First Quarter 2018 to Third Quarter 2020; January to September 2018 to 2020
(in Million PhP)

Subsector/ Commodity	2018				2019				2020			January to September		
	Q1	Q2	Q3	Q4	Q1	Q2	Q3	Q4	Q1	Q2	Q3	2018	2019	2020
Livestock	77,296	81,037	77,950	95,138	77,450	79,646	72,530	74,077	72,332	73,798	71,360	236,282	229,627	217,490
Hog	65,112	67,636	65,569	79,215	64,666	65,756	59,625	57,435	59,054	62,923	58,622	198,316	190,047	180,600
Cattle	6,497	7,152	6,536	8,464	6,796	7,280	6,747	8,865	7,236	5,568	6,514	20,185	20,822	19,319
Carabao	2,903	3,580	2,900	4,265	2,963	3,693	3,003	4,334	3,069	2,846	2,927	9,383	9,658	8,842
Goat	2,554	2,429	2,717	2,954	2,769	2,655	2,901	3,195	2,688	2,169	2,979	7,700	8,325	7,836
Dairy	231	239	228	239	256	263	255	248	285	291	317	698	775	893
Poultry	57,398	57,979	56,107	60,170	54,952	56,541	61,432	73,111	59,634	55,091	58,722	171,485	172,925	173,447
Chicken	41,791	43,509	41,085	44,339	38,249	40,193	43,359	52,138	39,265	35,240	37,348	126,385	121,800	111,853
Duck	929	573	754	869	1,061	611	887	990	1,015	566	1,014	2,256	2,558	2,596
Chicken Eggs	13,659	12,675	13,240	13,782	14,548	14,377	16,045	18,562	18,117	17,861	19,160	39,575	44,970	55,137
Duck Eggs	1,019	1,222	1,028	1,180	1,095	1,360	1,141	1,421	1,238	1,423	1,200	3,269	3,596	3,861

Note: Details may not add up to totals due to rounding

Source: Philippine Statistics Authority

Table 4d. Value of Fisheries Production at Current Prices
 First Quarter 2018 to Third Quarter 2020; January to September 2018 to 2020
 (in Million PhP)

Subsector/ Commodity	2018				2019				2020			January to September		
	Q1	Q2	Q3	Q4	Q1	Q2	Q3	Q4	Q1	Q2	Q3	2018	2019	2020
Fisheries	58,908	68,267	64,358	73,816	63,239	75,010	63,953	79,450	62,782	73,208	63,379	191,533	202,201	199,370
Milkfish (Bangus)	6,831	10,630	10,610	13,154	6,886	10,267	11,616	14,584	7,516	11,585	9,926	28,071	28,768	29,027
Tilapia	6,906	6,173	4,629	6,546	6,797	6,358	4,599	7,425	7,408	6,565	4,857	17,707	17,755	18,830
Tiger prawn (Sugpo)	4,220	5,888	4,213	7,464	4,453	6,449	4,059	8,158	4,093	6,747	2,946	14,321	14,961	13,787
Skipjack (Gulyasan)	4,694	4,045	4,176	4,331	5,471	4,580	4,826	5,577	4,229	4,723	4,432	12,915	14,877	13,383
Roundscad (Galunggong)	2,543	3,512	3,101	2,452	3,269	3,734	2,926	2,251	3,290	4,703	3,421	9,156	9,929	11,414
Seaweed	2,261	2,124	2,097	4,437	2,464	2,479	2,236	4,666	2,448	2,464	2,279	6,482	7,179	7,191
Yellowfin tuna (Tambakol/Bariles)	2,867	2,466	2,178	2,533	3,316	3,779	2,415	3,168	2,670	3,085	2,407	7,511	9,511	8,162
Mudcrab (Alimango)	2,989	1,747	1,865	2,681	2,964	1,890	1,939	2,824	3,241	1,908	1,657	6,601	6,793	6,806
Frigate tuna (Tulingan)	2,024	2,504	2,238	1,984	2,028	2,835	2,066	2,044	2,127	2,501	2,224	6,766	6,928	6,852
Big-eyed scad (Matangbaka)	1,913	2,299	2,310	2,153	1,959	2,383	2,128	2,397	2,125	2,068	2,111	6,521	6,470	6,305
Bali sardinella (Tamban)	1,254	2,567	2,027	1,287	1,136	2,337	2,127	1,402	1,375	2,763	2,724	5,849	5,600	6,861
Squid (Pusit)	1,244	1,596	1,323	1,473	1,260	1,800	1,267	1,451	1,400	1,534	1,272	4,163	4,327	4,206
Blue crab (Alimasag)	902	1,428	1,821	1,425	902	1,356	1,277	1,020	1,044	1,060	1,587	4,151	3,535	3,690
Bigeye tuna (Tambakol/ Bariles)	1,274	1,377	1,443	1,383	495	629	749	658	505	571	892	4,094	1,873	1,968
Grouper (Lapu-lapu)	584	674	2,577	823	728	910	997	831	786	853	2,024	3,836	2,635	3,663
Indian mackerel (Alumahan)	879	1,411	1,101	1,204	1,198	1,573	1,197	1,320	1,152	1,189	1,226	3,391	3,968	3,567
Threadfin bream (Bisugo)	1,023	1,095	1,137	1,148	1,283	1,371	1,339	1,485	1,403	1,234	1,418	3,255	3,993	4,054
Slipmouth (Sapsap)	600	711	810	872	632	769	782	829	542	641	726	2,122	2,183	1,909
Cavalla (Talakitok)	660	761	741	761	813	826	725	797	821	908	874	2,161	2,364	2,603
Fimbriated sardines (Tunsoy)	672	720	627	719	636	720	598	484	523	470	483	2,019	1,955	1,475
Other Fisheries	12,568	14,539	13,333	14,984	14,550	17,965	14,082	16,082	14,083	15,639	13,895	40,441	46,597	43,616

Note: Details may not add up to totals due to rounding

Source: Philippine Statistics Authority

Table 5a. Growth Rates of Value of Production in Agriculture at Current Prices
 First Quarter 2018 to Third Quarter 2020; January to September 2018 to 2020
 (in percent)

Subsector	2018-2019				2019-2020			January to September	
	Q1	Q2	Q3	Q4	Q1	Q2	Q3	2018-2019	2019-2020
Crops	-6.9	-12.5	-7.9	-10.6	-1.9	13.6	10.8	-9.1	7.1
Livestock	0.2	-1.7	-7.0	-22.1	-6.6	-7.3	-1.6	-2.8	-5.3
Poultry	-4.3	-2.5	9.5	21.5	8.5	-2.6	-4.4	0.8	0.3
Fisheries	7.4	9.9	-0.6	7.6	-0.7	-2.4	-0.9	5.6	-1.4
AGRICULTURE	-3.4	-5.8	-4.2	-6.3	-1.2	4.6	4.1	-4.5	2.4

Source: Philippine Statistics Authority

Table 5b. Growth Rates of Value of Crop Production at Current Prices
 First Quarter 2018 to Third Quarter 2020; January to September 2018 to 2020
 (in percent)

Subsector/ Commodity	2018-2019				2019-2020			January to September	
	Q1	Q2	Q3	Q4	Q1	Q2	Q3	2018-2019	2019-2020
Crops	-6.9	-12.5	-7.9	-10.6	-1.9	13.6	10.8	-9.1	7.1
Palay	-11.7	-22.1	-29.9	-21.4	-14.8	18.0	18.5	-20.4	4.5
Corn	-2.1	-11.4	14.2	-25.4	-16.1	1.1	-2.7	2.0	-7.2
Banana	6.9	12.8	17.6	18.5	15.0	20.9	22.2	12.6	19.6
Coconut	-34.3	-24.7	-20.5	-4.5	8.8	12.4	23.0	-26.6	15.2
Mango	-19.2	-11.7	5.9	15.8	12.6	12.8	0.7	-11.8	11.5
Sugarcane	36.0	-55.9	-74.6	-25.8	-4.2	64.5	-12.5	-8.5	9.1
Pineapple	-12.0	-24.8	-21.0	19.1	13.8	-7.4	-12.2	-20.1	-2.8
Cassava	20.3	16.0	34.4	10.9	17.0	19.3	-0.8	24.9	9.5
Rubber	-15.0	14.6	0.8	20.6	2.6	-38.7	-23.9	3.9	-27.0
Sweet Potato	2.8	14.2	13.4	5.3	12.3	20.8	1.0	10.9	11.5
Onion	-17.3	-21.8	-41.3	6.1	61.9	88.5	38.4	-18.3	67.4
Eggplant	-8.7	-26.1	-22.2	13.0	8.6	8.9	-36.1	-18.8	0.3
Coffee	-9.2	-12.0	-3.8	-6.7	1.3	-1.1	-10.6	-8.9	-1.4
Tobacco	2.8	10.4	73.1	6.7	-5.9	2.9	25.2	12.9	3.2
Abaca	4.3	4.2	5.5	-10.5	-5.5	-6.0	2.5	4.7	-2.7
Tomato	-19.4	22.7	-22.4	10.6	38.7	-19.8	20.1	-2.5	5.2
Potato	-18.4	17.3	8.1	-8.4	41.2	37.6	-1.9	-2.9	24.9
Ampalaya	-3.8	13.4	-22.1	19.0	-4.2	-7.7	-11.1	-3.7	-7.7
Cabbage	-19.4	3.0	-60.9	-14.1	-43.6	-0.9	-41.2	-28.1	-25.5
Calamansi	-26.5	18.1	20.4	4.7	0.8	-38.6	-28.9	7.8	-26.5
Mongo	5.4	-7.0	24.1	15.3	14.6	11.4	0.3	-2.8	11.7
Cacao	21.1	17.3	24.8	19.4	15.6	6.1	7.0	21.2	9.2
Other Crops	-13.3	2.6	-8.2	4.9	10.3	-3.3	-3.8	-6.2	1.0

Source: Philippine Statistics Authority

Table 5c. Growth Rates of Value of Livestock and Poultry Production at Current Prices
 First Quarter 2018 to Third Quarter 2020; January to September 2018 to 2020
 (in percent)

Subsector/ Commodity	2018-2019				2019-2020			January to September	
	Q1	Q2	Q3	Q4	Q1	Q2	Q3	2018-2019	2019-2020
Livestock	0.2	-1.7	-7.0	-22.1	-6.6	-7.3	-1.6	-2.8	-5.3
Hog	-0.7	-2.8	-9.1	-27.5	-8.7	-4.3	-1.7	-4.2	-5.0
Cattle	4.6	1.8	3.2	4.7	6.5	-23.5	-3.4	3.2	-7.2
Carabao	2.0	3.2	3.5	1.6	3.6	-22.9	-2.5	2.9	-8.4
Goat	8.4	9.3	6.8	8.1	-2.9	-18.3	2.7	8.1	-5.9
Dairy	11.2	9.8	11.9	3.9	11.1	10.8	24.0	11.0	15.3
Poultry	-4.3	-2.5	9.5	21.5	8.5	-2.6	-4.4	0.8	0.3
Chicken	-8.5	-7.6	5.5	17.6	2.7	-12.3	-13.9	-3.6	-8.2
Duck	14.2	6.5	17.6	13.9	-4.3	-7.2	14.4	13.4	1.5
Chicken Eggs	6.5	13.4	21.2	34.7	24.5	24.2	19.4	13.6	22.6
Duck Eggs	7.4	11.3	11.0	20.4	13.0	4.6	5.2	10.0	7.4

Source: Philippine Statistics Authority

Table 5d. Growth Rates of Value of Fisheries Production at Current Prices
 First Quarter 2018 to Third Quarter 2020; January to September 2018 to 2020
 (in percent)

Subsector/ Commodity	2018-2019				2019-2020			January to September	
	Q1	Q2	Q3	Q4	Q1	Q2	Q3	2018-2019	2019-2020
Fisheries	7.4	9.9	-0.6	7.6	-0.7	-2.4	-0.9	5.6	-1.4
Milkfish (Bangus)	0.8	-3.4	9.5	10.9	9.2	12.8	-14.5	2.5	0.9
Tilapia	-1.6	3.0	-0.6	13.4	9.0	3.2	5.6	0.3	6.1
Tiger prawn (Sugpo)	5.5	9.5	-3.7	9.3	-8.1	4.6	-27.4	4.5	-7.8
Skipjack (Gulyasan)	16.6	13.2	15.6	28.8	-22.7	3.1	-8.2	15.2	-10.0
Roundscad (Galunggong)	28.6	6.3	-5.7	-8.2	0.7	26.0	16.9	8.4	15.0
Seaweed	9.0	16.7	6.7	5.1	-0.7	-0.6	1.9	10.8	0.2
Yellowfin tuna (Tambakol/Bariles)	15.7	53.3	10.9	25.0	-19.5	-18.4	-0.3	26.6	-14.2
Mudcrab (Alimango)	-0.8	8.2	4.0	5.3	9.3	0.9	-14.6	2.9	0.2
Frigate tuna (Tulingan)	0.2	13.2	-7.7	3.0	4.9	-11.8	7.7	2.4	-1.1
Big-eyed scad (Matangbaka)	2.4	3.6	-7.8	11.3	8.5	-13.2	-0.8	-0.8	-2.5
<i>Bali sardinella</i> (Tamban)	-9.4	-9.0	4.9	9.0	21.0	18.2	28.1	-4.3	22.5
Squid (Pusit)	1.2	12.8	-4.2	-1.4	11.1	-14.8	0.4	3.9	-2.8
Blue crab (Alimasag)	0.01	-5.1	-29.8	-28.5	15.7	-21.9	24.3	-14.8	4.4
Bigeye tuna (Tambakol/ Bariles)	-61.2	-54.3	-48.1	-52.4	2.1	-9.3	19.1	-54.2	5.1
Grouper (Lapu-lapu)	24.7	34.9	-61.3	0.9	8.0	-6.2	102.9	-31.3	39.0
Indian mackerel (Alumahan)	36.3	11.5	8.7	9.6	-3.8	-24.4	2.4	17.0	-10.1
Threadfin bream (Bisugo)	25.4	25.2	17.8	29.4	9.3	-10.0	5.9	22.7	1.5
Slipmouth (Sapsap)	5.2	8.1	-3.5	-4.9	-14.2	-16.7	-7.2	2.9	-12.6
Cavalla (Talakitok)	23.2	8.7	-2.1	4.7	1.1	9.9	20.5	9.4	10.1
Fimbriated sardines (Tunsoy)	-5.3	0.01	-4.6	-32.7	-17.8	-34.8	-19.3	-3.2	-24.5
Other Fisheries	15.8	23.6	5.6	7.3	-3.2	-12.9	-1.3	15.2	-6.4

Source: Philippine Statistics Authority

Table 6a. Percentage Distribution of Value of Production in Agriculture at Current Prices
 First Quarter 2018 to Third Quarter 2020; January to September 2018 to 2020
 (in percent)

Subsector	2018				2019				2020			January to September		
	Q1	Q2	Q3	Q4	Q1	Q2	Q3	Q4	Q1	Q2	Q3	2018	2019	2020
Crops	56.2	53.6	51.1	55.3	54.2	49.8	49.1	52.8	53.8	54.1	52.2	53.7	51.1	53.4
Livestock	17.5	18.1	19.2	18.6	18.1	18.9	18.7	15.4	17.2	16.8	17.6	18.3	18.6	17.2
Poultry	13.0	13.0	13.8	11.7	12.9	13.4	15.8	15.2	14.1	12.5	14.5	13.3	14.0	13.7
Fisheries	13.3	15.3	15.9	14.4	14.8	17.8	16.5	16.6	14.9	16.6	15.7	14.8	16.4	15.7
AGRICULTURE	100.0	100.0	100.0	100.0	100.0	100.0	100.0	100.0	100.0	100.0	100.0	100.0	100.0	100.0

Note: Details may not add up to totals due to rounding

Source: Philippine Statistics Authority

Table 6b. Percentage Distribution of Value of Crop Production at Current Prices
 First Quarter 2018 to Third Quarter 2020; January to September 2018 to 2020
 (in percent)

Subsector/ Commodity	2018				2019				2020			January to September		
	Q1	Q2	Q3	Q4	Q1	Q2	Q3	Q4	Q1	Q2	Q3	2018	2019	2020
Crops	56.2	53.6	51.1	55.3	54.2	49.8	49.1	52.8	53.8	54.1	52.2	53.7	51.1	53.4
Palay	20.7	18.5	17.3	27.5	18.9	15.3	12.6	23.1	16.3	17.3	14.4	18.9	15.7	16.0
Corn	7.8	4.1	7.8	4.9	7.9	3.9	9.2	3.9	6.7	3.7	8.6	6.5	6.9	6.3
Banana	8.2	8.9	10.0	8.1	9.1	10.7	12.3	10.3	10.6	12.4	14.4	9.0	10.6	12.4
Coconut	5.6	4.9	5.9	4.1	3.8	4.0	4.9	4.2	4.2	4.2	5.8	5.5	4.2	4.7
Mango	1.3	4.0	0.6	0.2	1.1	3.8	0.6	0.2	1.2	4.1	0.6	2.0	1.9	2.0
Sugarcane	3.3	2.5	0.4	2.6	4.6	1.2	0.1	2.1	4.5	1.8	0.1	2.1	2.0	2.2
Pineapple	1.5	2.1	2.1	1.2	1.3	1.7	1.7	1.5	1.5	1.5	1.4	1.9	1.6	1.5
Cassava	0.6	0.9	1.3	1.1	0.8	1.1	1.8	1.4	0.9	1.3	1.7	0.9	1.2	1.3
Rubber	0.3	0.7	0.7	0.6	0.2	0.8	0.7	0.8	0.3	0.5	0.5	0.5	0.6	0.4
Sweet Potato	0.4	0.6	0.6	0.4	0.4	0.7	0.7	0.5	0.5	0.8	0.7	0.5	0.6	0.7
Onion	1.1	0.3	0.0004	0.1	1.0	0.3	0.0003	0.1	1.6	0.5	0.0003	0.5	0.4	0.7
Eggplant	0.6	0.6	0.3	0.1	0.5	0.5	0.3	0.2	0.6	0.5	0.2	0.5	0.4	0.4
Coffee	0.2	0.1	0.1	0.3	0.2	0.1	0.1	0.3	0.2	0.1	0.1	0.1	0.1	0.1
Tobacco	0.2	0.6	0.1	0.05	0.2	0.7	0.1	0.1	0.2	0.6	0.2	0.3	0.3	0.4
Abaca	0.2	0.3	0.3	0.3	0.3	0.3	0.4	0.2	0.2	0.3	0.4	0.3	0.3	0.3
Tomato	0.3	0.3	0.2	0.1	0.2	0.4	0.1	0.1	0.3	0.3	0.2	0.3	0.3	0.3
Potato	0.2	0.1	0.1	0.5	0.1	0.1	0.1	0.5	0.2	0.1	0.1	0.1	0.1	0.2
Ampalaya	0.2	0.2	0.2	0.1	0.2	0.3	0.2	0.2	0.2	0.2	0.2	0.2	0.2	0.2
Cabbage	0.1	0.1	0.2	0.2	0.1	0.1	0.1	0.2	0.1	0.1	0.04	0.1	0.1	0.1
Calamansi	0.1	0.1	0.2	0.1	0.1	0.1	0.3	0.1	0.1	0.1	0.2	0.1	0.2	0.1
Mongo	0.1	0.3	0.02	0.03	0.1	0.3	0.02	0.04	0.1	0.3	0.02	0.1	0.1	0.2
Cacao	0.03	0.03	0.04	0.04	0.04	0.04	0.1	0.1	0.04	0.04	0.1	0.03	0.04	0.05
Other Crops	3.2	3.2	2.8	2.5	2.9	3.5	2.7	2.8	3.2	3.2	2.5	3.1	3.0	3.0

Note: Details may not add up to totals due to rounding

Source: Philippine Statistics Authority

Table 6c. Percentage Distribution of Value of Livestock and Poultry Production at Current Prices
 First Quarter 2018 to Third Quarter 2020; January to September 2018 to 2020
 (in percent)

Subsector/ Commodity	2018				2019				2020			January to September		
	Q1	Q2	Q3	Q4	Q1	Q2	Q3	Q4	Q1	Q2	Q3	2018	2019	2020
Livestock	17.5	18.1	19.2	18.6	18.1	18.9	18.7	15.4	17.2	16.8	17.6	18.3	18.6	17.2
Hog	14.7	15.1	16.2	15.5	15.2	15.6	15.3	12.0	14.0	14.3	14.5	15.3	15.4	14.3
Cattle	1.5	1.6	1.6	1.7	1.6	1.7	1.7	1.8	1.7	1.3	1.6	1.6	1.7	1.5
Carabao	0.7	0.8	0.7	0.8	0.7	0.9	0.8	0.9	0.7	0.6	0.7	0.7	0.8	0.7
Goat	0.6	0.5	0.7	0.6	0.6	0.6	0.7	0.7	0.6	0.5	0.7	0.6	0.7	0.6
Dairy	0.1	0.1	0.1	0.05	0.1	0.1	0.1	0.1	0.1	0.1	0.1	0.1	0.1	0.1
Poultry	13.0	13.0	13.8	11.7	12.9	13.4	15.8	15.2	14.1	12.5	14.5	13.3	14.0	13.7
Chicken	9.5	9.7	10.1	8.7	9.0	9.6	11.2	10.9	9.3	8.0	9.2	9.8	9.9	8.8
Duck	0.2	0.1	0.2	0.2	0.2	0.1	0.2	0.2	0.2	0.1	0.3	0.2	0.2	0.2
Chicken Eggs	3.1	2.8	3.3	2.7	3.4	3.4	4.1	3.9	4.3	4.1	4.7	3.1	3.6	4.4
Duck Eggs	0.2	0.3	0.3	0.2	0.3	0.3	0.3	0.3	0.3	0.3	0.3	0.3	0.3	0.3

Note: Details may not add up to totals due to rounding
 Source: Philippine Statistics Authority

Table 6d. Percentage Distribution of Value of Fisheries Production at Current Prices
 First Quarter 2018 to Third Quarter 2020; January to September 2018 to 2020
 (in percent)

Subsector/ Commodity	2018				2019				2020			January to September		
	Q1	Q2	Q3	Q4	Q1	Q2	Q3	Q4	Q1	Q2	Q3	2018	2019	2020
Fisheries	13.3	15.3	15.9	14.4	14.8	17.8	16.5	16.6	14.9	16.6	15.7	14.8	16.4	15.7
Milkfish (Bangus)	1.5	2.4	2.6	2.6	1.6	2.4	3.0	3.0	1.8	2.6	2.5	2.2	2.3	2.3
Tilapia	1.6	1.4	1.1	1.3	1.6	1.5	1.2	1.5	1.8	1.5	1.2	1.4	1.4	1.5
Tiger prawn (Sugpo)	1.0	1.3	1.0	1.5	1.0	1.5	1.0	1.7	1.0	1.5	0.7	1.1	1.2	1.1
Skipjack (Gulyasan)	1.1	0.9	1.0	0.8	1.3	1.1	1.2	1.2	1.0	1.1	1.1	1.0	1.2	1.1
Roundscad (Galunggong)	0.6	0.8	0.8	0.5	0.8	0.9	0.8	0.5	0.8	1.1	0.8	0.7	0.8	0.9
Seaweed	0.5	0.5	0.5	0.9	0.6	0.6	0.6	1.0	0.6	0.6	0.6	0.5	0.6	0.6
Yellowfin tuna (Tambakol/Bariles)	0.6	0.6	0.5	0.5	0.8	0.9	0.6	0.7	0.6	0.7	0.6	0.6	0.8	0.6
Mudcrab (Alimango)	0.7	0.4	0.5	0.5	0.7	0.4	0.5	0.6	0.8	0.4	0.4	0.5	0.5	0.5
Frigate tuna (Tulingan)	0.5	0.6	0.6	0.4	0.5	0.7	0.5	0.4	0.5	0.6	0.5	0.5	0.6	0.5
Big-eyed scad (Matangbaka)	0.4	0.5	0.6	0.4	0.5	0.6	0.5	0.5	0.5	0.5	0.5	0.5	0.5	0.5
<i>Bali sardinella</i> (Tamban)	0.3	0.6	0.5	0.3	0.3	0.6	0.5	0.3	0.3	0.6	0.7	0.5	0.5	0.5
Squid (Pusit)	0.3	0.4	0.3	0.3	0.3	0.4	0.3	0.3	0.3	0.3	0.3	0.3	0.4	0.3
Blue crab (Alimasag)	0.2	0.3	0.4	0.3	0.2	0.3	0.3	0.2	0.2	0.2	0.4	0.3	0.3	0.3
Bigeye tuna (Tambakol/ Bariles)	0.3	0.3	0.4	0.3	0.1	0.1	0.2	0.1	0.1	0.1	0.2	0.3	0.2	0.2
Grouper (Lapu-lapu)	0.1	0.2	0.6	0.2	0.2	0.2	0.3	0.2	0.2	0.2	0.5	0.3	0.2	0.3
Indian mackerel (Alumahan)	0.2	0.3	0.3	0.2	0.3	0.4	0.3	0.3	0.3	0.3	0.3	0.3	0.3	0.3
Threadfin bream (Bisugo)	0.2	0.2	0.3	0.2	0.3	0.3	0.3	0.3	0.3	0.3	0.4	0.3	0.3	0.3
Slipmouth (Sapsap)	0.1	0.2	0.2	0.2	0.1	0.2	0.2	0.2	0.1	0.1	0.2	0.2	0.2	0.2
Cavalla (Talakitok)	0.1	0.2	0.2	0.1	0.2	0.2	0.2	0.2	0.2	0.2	0.2	0.2	0.2	0.2
Fimbriated sardines (Tunsoy)	0.2	0.2	0.2	0.1	0.1	0.2	0.2	0.1	0.1	0.1	0.1	0.2	0.2	0.1
Other Fisheries	2.8	3.3	3.3	2.9	3.4	4.3	3.6	3.4	3.3	3.6	3.4	3.1	3.8	3.4

Note: Details may not add up to totals due to rounding

Source: Philippine Statistics Authority

Table 7a. Volume of Crop Production
First Quarter 2018 to Third Quarter 2020; January to September 2018 to 2020
(in Thousand Metric Tons)

Subsector/ Commodity	2018				2019				2020			January to September		
	Q1	Q2	Q3	Q4	Q1	Q2	Q3	Q4	Q1	Q2	Q3	2018	2019	2020
Crops														
Palay	4,622.98	4,090.24	3,196.42	7,156.46	4,416.85	3,852.53	3,051.47	7,493.98	4,261.44	4,125.23	3,516.35	11,909.63	11,320.85	11,903.02
Corn	2,476.57	1,284.30	2,205.42	1,805.63	2,425.22	1,172.19	2,723.11	1,658.32	2,296.04	1,352.56	2,817.37	5,966.29	6,320.52	6,465.98
Banana	2,143.87	2,358.79	2,432.07	2,424.05	2,114.50	2,260.97	2,392.67	2,389.54	2,063.11	2,230.66	2,362.50	6,934.74	6,768.14	6,656.28
Coconut	3,305.55	3,339.61	4,031.26	4,049.75	3,308.41	3,324.13	4,059.70	4,072.81	3,167.38	3,263.68	4,013.33	10,676.41	10,692.25	10,444.39
Mango	97.70	528.49	57.85	27.62	94.92	556.88	58.36	27.78	94.07	558.07	59.58	684.04	710.16	711.72
Sugarcane	10,226.49	6,460.63	1,009.23	7,034.47	11,716.43	2,608.98	403.57	5,990.31	12,182.88	5,124.62	499.44	17,696.35	14,728.98	17,806.94
Pineapple	621.64	697.45	705.43	706.46	621.37	702.25	712.29	711.94	626.52	712.26	651.13	2,024.52	2,035.91	1,989.91
Cassava	544.75	809.88	600.10	768.30	514.23	751.46	591.96	773.15	515.46	722.79	590.93	1,954.73	1,857.65	1,829.18
Rubber	47.36	120.33	112.96	142.72	45.74	125.37	108.78	151.79	45.75	116.94	104.43	280.65	279.88	267.12
Sweet Potato	110.89	153.99	132.15	128.61	112.29	150.09	134.06	129.42	116.52	157.47	137.70	397.02	396.44	411.69
Onion	124.17	39.08	0.03	9.39	152.48	60.08	0.03	9.49	163.66	55.98	0.02	163.27	212.59	219.67
Eggplant	79.02	103.08	38.49	24.24	80.52	106.33	38.46	24.57	75.40	104.44	39.76	220.60	225.32	219.60
Coffee	18.43	6.48	5.81	29.60	17.16	6.07	5.79	31.02	17.22	5.88	5.75	30.72	29.02	28.85
Tobacco	13.21	34.91	1.16	1.10	12.78	36.41	1.30	0.57	12.72	37.62	0.91	49.28	50.49	51.25
Abaca	15.50	18.89	19.09	18.03	15.85	18.90	20.05	17.40	14.97	18.28	19.93	53.48	54.80	53.18
Tomato	91.69	73.50	27.34	28.30	95.30	71.95	27.91	28.13	94.22	74.27	27.52	192.53	195.16	196.01
Potato	23.77	13.73	16.98	62.95	23.72	13.22	15.41	63.71	23.13	12.52	16.58	54.47	52.35	52.23
Ampalaya	17.57	29.58	21.38	18.86	18.33	30.50	20.55	19.96	18.26	30.67	20.38	68.53	69.38	69.30
Cabbage	30.77	22.51	15.81	51.57	30.93	22.50	15.86	58.77	32.32	22.36	15.07	69.08	69.28	69.75
Calamansi	14.86	18.39	53.56	26.75	14.95	18.02	66.76	26.24	13.31	14.51	55.47	86.81	99.72	83.30
Morngo	7.93	24.18	1.42	3.13	8.14	23.56	1.43	3.12	8.63	23.80	1.47	33.53	33.13	33.90
Cacao	1.65	1.84	2.04	2.46	1.72	1.92	2.27	2.58	2.01	2.02	2.54	5.53	5.91	6.58
Other Crops	821.84	963.86	742.14	898.63	811.10	957.76	752.17	913.60	804.81	961.35	755.11	2,527.85	2,521.02	2,521.27

Source: Philippine Statistics Authority

Table 7b. Volume of Livestock and Poultry Production
First Quarter 2018 to Third Quarter 2020; January to September 2018 to 2020
(in Thousand Metric Tons)

Subsector/ Commodity	2018				2019				2020			January to September		
	Q1	Q2	Q3	Q4	Q1	Q2	Q3	Q4	Q1	Q2	Q3	2018	2019	2020
Livestock														
Hog	558.72	557.27	541.03	662.73	567.42	580.11	551.61	597.51	568.67	550.02	508.91	1,116.00	1,147.53	1,118.69
Cattle	61.26	66.46	59.38	76.22	61.30	65.20	59.27	74.85	60.62	46.00	52.95	127.72	126.50	106.61
Carabao	31.19	38.47	30.08	43.40	30.40	37.67	30.05	42.54	29.80	27.67	28.14	69.66	68.07	57.48
Goat	19.14	17.69	19.22	20.90	18.87	17.59	19.19	20.71	17.70	14.20	19.27	36.83	36.46	31.90
Dairy	6.05	6.17	5.65	5.82	6.14	6.20	6.01	5.96	6.44	6.58	6.97	12.22	12.34	13.02
Poultry														
Chicken	439.96	462.70	428.77	505.24	459.06	477.11	465.15	526.09	453.72	440.00	431.77	902.66	936.17	893.72
Duck	9.59	5.58	7.31	8.33	9.62	5.33	7.52	7.63	9.03	4.92	7.69	15.18	14.95	13.94
Chicken Eggs	130.55	131.09	133.72	138.54	142.01	141.45	145.54	154.23	148.17	148.45	154.29	261.64	283.46	296.62
Duck Eggs	10.56	12.90	10.70	12.45	11.17	13.89	10.98	13.53	11.37	13.76	11.32	23.46	25.06	25.13

Source: Philippine Statistics Authority

Table 7c. Volume of Fisheries Production
First Quarter 2018 to Third Quarter 2020; January to September 2018 to 2020
(in Thousand Metric Tons)

Subsector/ Commodity	2018				2019				2020			January to September		
	Q1	Q2	Q3	Q4	Q1	Q2	Q3	Q4	Q1	Q2	Q3	2018	2019	2020
Fisheries														
Milkfish (Bangus)	66.01	106.10	99.26	128.74	62.89	104.60	112.27	135.19	68.23	106.92	105.46	172.11	167.49	175.15
Tilapia	92.81	85.22	59.75	83.30	89.86	85.75	56.18	89.40	89.57	82.23	56.00	178.03	175.61	171.79
Tiger prawn (Sugpo)	8.46	11.82	9.55	15.05	8.39	12.37	8.89	16.35	8.25	12.65	7.89	20.29	20.76	20.90
Skipjack (Gulyasan)	68.34	67.48	59.05	63.50	69.91	61.89	63.81	70.77	54.80	74.14	64.02	135.83	131.80	128.94
Roundscad (Galunggong)	39.11	55.98	43.95	32.26	53.35	62.97	42.51	30.17	49.31	74.90	47.97	95.10	116.32	124.20
Seaweed	354.52	318.51	292.62	512.65	351.93	309.23	306.72	532.08	348.94	312.48	303.32	673.03	661.16	661.41
Yellowfin tuna (Tambakol/Bariles)	28.61	22.21	19.71	23.91	25.51	28.83	18.68	26.33	20.73	29.93	21.68	50.82	54.34	50.66
Mudcrab (Alimango)	6.37	4.31	4.90	6.10	6.24	4.60	5.35	6.09	6.85	4.29	4.83	10.68	10.84	11.14
Frigate tuna (Tulingan)	27.72	33.06	26.49	24.65	26.57	36.67	24.63	23.64	25.53	33.34	27.98	60.78	63.24	58.87
Big-eyed scad (Matangbaka)	25.88	29.42	27.41	28.21	24.62	29.93	25.74	29.14	25.63	25.98	25.49	55.30	54.56	51.61
Bali sardinella (Tamban)	40.51	96.51	78.02	44.09	36.51	86.47	78.01	46.51	50.47	126.15	102.62	137.02	122.98	176.62
Squid (Pusit)	11.08	13.88	10.62	11.75	10.54	14.96	10.28	11.17	10.73	12.70	10.28	24.96	25.50	23.43
Blue crab (Alimasag)	5.96	8.76	10.71	8.50	5.50	8.34	8.80	7.04	6.68	7.68	11.05	14.72	13.83	14.36
Gigeye tuna (Tambakol/ Bariles)	6.93	8.37	8.28	7.56	3.41	4.54	5.45	4.36	3.52	4.44	7.63	15.30	7.95	7.96
Grouper (Lapu-lapu)	3.80	4.41	4.77	4.81	4.44	5.10	5.68	4.50	4.32	4.98	5.83	8.21	9.55	9.30
Indian mackerel (Alumahan)	11.18	18.00	12.86	13.73	13.93	18.29	13.55	14.45	12.65	13.96	13.04	29.19	32.22	26.62
Threadfin bream (Bisugo)	8.33	9.97	8.90	9.15	9.48	10.42	10.55	10.94	9.97	9.82	10.47	18.30	19.90	19.79
Slipmouth (Sapsap)	9.21	11.56	12.86	14.32	10.20	11.30	11.59	13.38	7.93	9.33	11.09	20.77	21.50	17.26
Cavalla (Talakitok)	5.28	6.49	5.97	5.92	6.14	6.56	5.71	5.82	5.78	7.08	6.79	11.77	12.70	12.87
Fimbriated sardines (Tunsoy)	22.47	26.94	15.06	23.11	23.60	24.23	15.77	14.13	17.45	13.10	12.34	49.41	47.83	30.55
Other Fisheries	162.74	195.72	161.99	182.80	170.02	214.60	157.57	181.14	160.16	211.11	160.88	358.46	384.62	371.27

Source: Philippine Statistics Authority

Table 8a. Growth Rates of Volume of Crop Production
 First Quarter 2018 to Third Quarter 2020; January to September 2018 to 2020
 (in percent)

Subsector/ Commodity	2018-2019				2019-2020			January to September	
	Q1	Q2	Q3	Q4	Q1	Q2	Q3	2018-2019	2019-2020
Crops									
Palay	-4.5	-5.8	-4.5	4.7	-3.5	7.1	15.2	-4.9	5.1
Corn	-2.1	-8.7	23.5	-8.2	-5.3	15.4	3.5	5.9	2.3
Banana	-1.4	-4.1	-1.6	-1.4	-2.4	-1.3	-1.3	-2.4	-1.7
Coconut	0.1	-0.5	0.7	0.6	-4.3	-1.8	-1.1	0.1	-2.3
Mango	-2.8	5.4	0.9	0.6	-0.9	0.2	2.1	3.8	0.2
Sugarcane	14.6	-59.6	-60.0	-14.8	4.0	96.4	23.8	-16.8	20.9
Pineapple	-0.04	0.7	1.0	0.8	0.8	1.4	-8.6	0.6	-2.3
Cassava	-5.6	-7.2	-1.4	0.6	0.2	-3.8	-0.2	-5.0	-1.5
Rubber	-3.4	4.2	-3.7	6.4	0.04	-6.7	-4.0	-0.3	-4.6
Sweet Potato	1.3	-2.5	1.4	0.6	3.8	4.9	2.7	-0.1	3.8
Onion	22.8	53.7	-13.7	1.1	7.3	-6.8	-1.2	30.2	3.3
Eggplant	1.9	3.2	-0.1	1.4	-6.4	-1.8	3.4	2.1	-2.5
Coffee	-6.9	-6.3	-0.4	4.8	0.3	-3.1	-0.7	-5.5	-0.6
Tobacco	-3.3	4.3	12.8	-48.4	-0.5	3.3	-30.1	2.5	1.5
Abaca	2.3	0.1	5.0	-3.5	-5.6	-3.3	-0.6	2.5	-3.0
Tomato	3.9	-2.1	2.1	-0.6	-1.1	3.2	-1.4	1.4	0.4
Potato	-0.2	-3.7	-9.2	1.2	-2.5	-5.3	7.5	-3.9	-0.2
Ampalaya	4.4	3.1	-3.9	5.8	-0.4	0.5	-0.8	1.2	-0.1
Cabbage	0.5	-0.05	0.3	14.0	4.5	-0.6	-5.0	0.3	0.7
Calamansi	0.6	-2.0	24.6	-1.9	-10.9	-19.5	-16.9	14.9	-16.5
Mongo	2.6	-2.6	0.6	-0.3	6.0	1.0	3.0	-1.2	2.3
Cacao	4.4	4.4	11.4	4.9	16.7	5.6	12.0	7.0	11.3
Other Crops	-1.3	-0.6	1.4	1.7	-0.8	0.4	0.4	-0.3	0.01

Source: Philippine Statistics Authority

Table 8b. Growth Rates of Volume of Livestock and Poultry Production
 First Quarter 2018 to Third Quarter 2020; January to September 2018 to 2020
 (in percent)

Subsector/ Commodity	2018-2019				2019-2020			January to September	
	Q1	Q2	Q3	Q4	Q1	Q2	Q3	2018-2019	2019-2020
Livestock									
Hog	1.6	4.1	2.0	-9.8	0.2	-5.2	-7.7	2.8	-2.5
Cattle	0.1	-1.9	-0.2	-1.8	-1.1	-29.5	-10.7	-0.9	-15.7
Carabao	-2.5	-2.1	-0.1	-2.0	-2.0	-26.5	-6.3	-2.3	-15.6
Goat	-1.4	-0.6	-0.2	-0.9	-6.2	-19.3	0.4	-1.0	-12.5
Dairy	1.4	0.6	6.5	2.4	4.9	6.0	16.0	1.0	5.4
Poultry									
Chicken	4.3	3.1	8.5	4.1	-1.2	-7.8	-7.2	3.7	-4.5
Duck	0.3	-4.5	2.9	-8.3	-6.2	-7.8	2.3	-1.5	-6.7
Chicken Eggs	8.8	7.9	8.8	11.3	4.3	4.9	6.0	8.3	4.6
Duck Eggs	5.8	7.6	2.6	8.7	1.8	-1.0	3.1	6.8	0.3

Source: Philippine Statistics Authority

Table 8c. Growth Rates of Volume of Fisheries Production
 First Quarter 2018 to Third Quarter 2020; January to September 2018 to 2020
 (in percent)

Subsector/ Commodity	2018-2019				2019-2020			January to September	
	Q1	Q2	Q3	Q4	Q1	Q2	Q3	2018-2019	2019-2020
Fisheries									
Milkfish (Bangus)	-4.7	-1.4	13.1	5.0	8.5	2.2	-6.1	-2.7	4.6
Tilapia	-3.2	0.6	-6.0	7.3	-0.3	-4.1	-0.3	-1.4	-2.2
Tiger prawn (Sugpo)	-0.9	4.6	-6.9	8.6	-1.7	2.3	-11.3	2.3	0.7
Skipjack (Gulyasan)	2.3	-8.3	8.1	11.4	-21.6	19.8	0.3	-3.0	-2.2
Roundscad (Galunggong)	36.4	12.5	-3.3	-6.5	-7.6	18.9	12.8	22.3	6.8
Seaweed	-0.7	-2.9	4.8	3.8	-0.9	1.1	-1.1	-1.8	0.04
Yellowfin tuna (Tambakol/Bariles)	-10.8	29.8	-5.2	10.1	-18.7	3.8	16.1	6.9	-6.8
Mudcrab (Alimango)	-2.0	6.8	9.1	-0.1	9.7	-6.7	-9.7	1.5	2.8
Frigate tuna (Tulingan)	-4.2	10.9	-7.0	-4.1	-3.9	-9.1	13.6	4.0	-6.9
Big-eyed scad (Matangbaka)	-4.9	1.7	-6.1	3.3	4.1	-13.2	-1.0	-1.4	-5.4
<i>Bali sardinella</i> (Tamban)	-9.9	-10.4	0.0	5.5	38.2	45.9	31.5	-10.2	43.6
Squid (Pusit)	-4.8	7.8	-3.3	-4.9	1.8	-15.1	0.03	2.2	-8.1
Blue crab (Alimasag)	-7.7	-4.9	-17.8	-17.2	21.5	-7.9	25.5	-6.0	3.8
Bigeye tuna (Tambakol/ Bariles)	-50.8	-45.8	-34.2	-42.3	3.2	-2.1	39.9	-48.0	0.1
Grouper (Lapu-lapu)	17.0	15.7	19.3	-6.5	-2.8	-2.4	2.5	16.3	-2.6
Indian mackerel (Alumahan)	24.6	1.6	5.3	5.3	-9.2	-23.6	-3.7	10.4	-17.4
Threadfin bream (Bisugo)	13.8	4.5	18.6	19.5	5.2	-5.8	-0.7	8.7	-0.5
Slipmouth (Sapsap)	10.7	-2.3	-9.9	-6.6	-22.2	-17.4	-4.3	3.5	-19.7
Cavalla (Talakitok)	16.2	1.1	-4.3	-1.8	-5.8	8.0	18.9	7.9	1.3
Fimbriated sardines (Tunsoy)	5.0	-10.1	4.8	-38.9	-26.0	-45.9	-21.7	-3.2	-36.1
Other Fisheries	4.5	9.6	-2.7	-0.9	-5.8	-1.6	2.1	7.3	-3.5

Source: Philippine Statistics Authority

Table 9a. Average Farmgate Prices of Crops
First Quarter 2018 to Third Quarter 2020; January to September 2018 to 2020
(Php Per Kilogram)

Subsector/ Commodity	2018				2019				2020			January to September		
	Q1	Q2	Q3	Q4	Q1	Q2	Q3	Q4	Q1	Q2	Q3	2018	2019	2020
Crops														
Palay	19.77	20.24	21.92	19.67	18.28	16.75	16.09	14.77	16.13	18.46	16.55	20.51	17.17	17.06
Corn	13.85	14.33	14.26	13.85	13.85	13.91	13.18	11.25	12.28	12.19	12.41	14.10	13.57	12.31
Banana	16.87	16.92	16.68	17.19	18.28	19.90	19.94	20.66	21.56	24.39	24.68	16.82	19.41	23.61
Coconut	7.45	6.62	5.91	5.24	4.90	5.00	4.67	4.97	5.57	5.73	5.81	6.61	4.84	5.71
Mango	58.73	34.14	39.54	34.87	48.83	28.60	41.51	40.13	55.49	32.18	40.94	38.11	32.36	35.99
Sugarcane	1.42	1.73	1.74	1.89	1.69	1.89	1.11	1.65	1.55	1.58	0.78	1.55	1.71	1.54
Pineapple	10.46	13.60	11.82	8.76	9.21	10.15	9.25	10.35	10.39	9.27	8.88	12.02	9.55	9.50
Cassava	4.97	5.06	8.61	7.66	6.34	6.32	11.73	8.45	7.40	7.84	11.66	6.13	8.05	8.95
Rubber	25.68	24.16	23.79	21.31	22.62	26.57	24.92	24.15	23.20	17.47	19.74	24.27	25.28	19.34
Sweet Potato	16.50	16.43	17.90	17.37	16.75	19.26	20.02	18.17	18.12	22.17	19.70	16.94	18.81	20.20
Onion	40.24	35.54	56.70	38.04	27.09	18.07	38.58	39.92	40.87	36.57	54.04	39.12	24.55	39.77
Eggplant	31.82	27.67	34.00	30.34	28.51	19.83	26.47	33.84	33.06	21.98	16.36	30.26	24.07	24.77
Coffee	56.87	59.46	51.72	52.23	55.47	55.86	49.91	46.51	55.99	57.05	44.92	56.45	54.44	54.00
Tobacco	78.28	71.30	242.45	227.35	83.18	75.48	372.20	470.57	78.63	75.15	666.13	77.18	85.08	86.52
Abaca	67.09	67.16	70.20	73.97	68.44	69.95	70.53	68.61	68.48	68.01	72.73	68.23	69.72	69.91
Tomato	14.34	19.13	24.09	17.00	11.13	23.97	18.30	18.92	15.61	18.63	22.30	17.55	16.89	17.69
Potato	32.28	22.68	30.15	41.95	26.39	27.61	35.88	37.96	38.21	40.11	32.74	29.20	29.49	36.93
Ampalaya	40.33	33.43	42.72	36.92	37.17	36.77	34.62	41.54	35.75	33.75	31.02	38.10	36.24	33.48
Cabbage	18.92	21.63	39.06	24.17	15.17	22.28	15.24	18.21	8.18	22.22	9.43	24.41	17.49	12.95
Calamansi	31.80	26.34	16.48	23.00	23.22	31.75	15.93	24.53	26.28	24.20	13.63	21.19	19.88	17.49
Mongo	57.75	55.51	50.71	55.40	59.34	52.97	62.59	64.10	64.12	58.41	60.91	55.84	54.95	59.97
Cacao	80.43	82.37	82.26	82.17	93.28	92.60	92.20	93.51	92.36	93.01	88.11	81.75	92.64	90.92
Other Crops	17.24	14.83	15.44	14.29	15.14	15.32	13.98	14.74	16.83	14.75	13.40	15.79	14.86	15.01

Source: Philippine Statistics Authority

Table 9b. Average Farmgate Prices of Livestock and Poultry
 First Quarter 2018 to Third Quarter 2020; January to September 2018 to 2020
 (Php Per Kilogram)

Subsector/ Commodity	2018				2019				2020			January to September		
	Q1	Q2	Q3	Q4	Q1	Q2	Q3	Q4	Q1	Q2	Q3	2018	2019	2020
Livestock														
Hog	116.54	121.37	121.19	119.53	113.97	113.35	108.09	96.12	103.85	114.40	115.19	177.70	165.61	161.44
Cattle	106.06	107.62	110.07	111.05	110.85	111.66	113.83	118.44	119.38	121.06	123.02	158.05	164.60	181.21
Carabao	93.07	93.06	96.42	98.26	97.46	98.03	99.92	101.87	102.96	102.83	104.02	134.70	141.88	153.83
Goat	133.44	137.31	141.32	141.35	146.78	150.94	151.13	154.28	151.83	152.76	154.62	209.06	228.35	245.62
Dairy	38.09	38.76	40.43	41.03	41.76	42.34	42.50	41.64	44.26	44.25	45.41	57.10	62.75	68.59
Poultry														
Chicken	94.99	94.03	95.82	87.76	83.32	84.24	93.21	99.10	86.54	80.09	86.50	140.01	130.10	125.15
Duck	96.85	102.66	103.19	104.39	110.31	114.48	117.91	129.73	112.47	115.13	131.91	148.66	171.10	186.16
Chicken Eggs	104.63	96.69	99.02	99.48	102.44	101.64	110.24	120.35	122.27	120.31	124.18	151.25	158.65	185.88
Duck Eggs	96.52	94.72	96.09	94.81	98.00	97.93	103.95	105.03	108.80	103.46	106.08	139.36	143.51	153.65

Source: Philippine Statistics Authority

Table 9c. Average Farmgate Prices of Fisheries
First Quarter 2018 to Third Quarter 2020; January to September 2018 to 2020
(PhP Per Kilogram)

Subsector/ Commodity	2018				2019				2020			January to September		
	Q1	Q2	Q3	Q4	Q1	Q2	Q3	Q4	Q1	Q2	Q3	2018	2019	2020
Fisheries														
Milkfish (Bangus)	103.49	100.19	106.89	102.17	109.50	98.15	103.46	107.88	110.16	108.35	94.12	163.10	171.77	165.73
Tilapia	74.41	72.43	77.47	78.58	75.64	74.15	81.87	83.05	82.71	79.84	86.74	99.46	101.10	109.61
Tiger prawn (Sugpo)	498.55	497.90	441.37	496.00	530.75	521.18	456.51	498.99	496.42	533.27	373.64	705.84	720.56	659.72
Skipjack (Gulyasan)	68.68	59.94	70.73	68.20	78.25	74.00	75.64	78.80	77.16	63.70	69.22	95.09	112.88	103.79
Roundscad (Galunggong)	65.00	62.73	70.57	76.02	61.27	59.29	68.83	74.59	66.73	62.80	71.31	96.28	85.36	91.90
Seaweed	6.38	6.67	7.16	8.66	7.00	8.02	7.29	8.77	7.01	7.88	7.52	9.63	10.86	10.87
Yellowfin tuna (Tambakol/Bariles)	100.21	111.00	110.50	105.97	129.97	131.11	129.27	120.33	128.79	103.06	111.01	147.79	175.02	161.11
Mudcrab (Alimango)	468.93	405.79	380.62	439.60	474.70	411.09	362.59	463.43	473.12	444.71	342.91	618.10	626.60	610.88
Frigate tuna (Tulingan)	73.01	75.73	84.50	80.51	76.32	77.31	83.87	86.44	83.32	75.01	79.48	111.32	109.57	116.40
Big-eyed scad (Matangbaka)	73.90	78.14	84.26	76.31	79.55	79.60	82.69	82.24	82.93	79.59	82.83	117.92	118.59	122.15
Bali sardinella (Tamban)	30.97	26.60	25.99	29.19	31.13	27.02	27.26	30.15	27.23	21.90	26.54	42.69	45.53	38.85
Squid (Pusit)	112.34	114.99	124.53	125.35	119.51	120.33	123.27	129.98	130.47	120.78	123.71	166.81	169.66	179.48
Blue crab (Alimasag)	151.41	162.97	170.04	167.63	164.05	162.68	145.14	144.79	156.25	137.98	143.64	281.97	255.55	256.99
Bigeye tuna (Tambakol/ Bariles)	183.95	164.47	174.21	183.04	145.11	138.58	137.45	150.95	143.66	128.50	116.95	267.64	235.62	247.25
Grouper (Lapu-Lapu)	153.88	152.85	540.89	171.18	163.88	178.19	175.46	184.72	182.11	171.24	347.27	467.37	276.00	393.85
Indian mackerel (Alumahan)	78.60	78.35	85.62	87.75	85.99	86.04	88.35	91.34	91.04	85.16	94.02	116.18	123.17	134.02
Threadfin bream (Bisugo)	122.91	109.81	127.83	125.46	135.42	131.53	126.99	135.80	140.63	125.67	135.41	177.93	200.69	204.85
Slipmouth (Sapsap)	65.17	61.51	63.03	60.87	61.96	68.04	67.48	61.94	68.37	68.66	65.40	102.14	101.54	110.56
Cavalla (Talakitok)	124.91	117.22	124.12	128.47	132.37	126.00	127.05	136.99	142.03	128.17	128.75	183.60	186.21	202.30
Fimbriated sardines (Tunsoy)	29.90	26.73	41.64	31.12	26.96	29.72	37.93	34.24	29.98	35.85	39.11	40.86	40.87	48.30
Other Fisheries	77.23	74.29	82.31	81.97	85.58	83.71	89.37	88.78	87.93	74.08	86.37	112.82	121.15	117.48

Source: Philippine Statistics Authority

Table 10a. Growth Rates of Average Farmgate Prices of Crops
 First Quarter 2018 to Third Quarter 2020; January to September 2018 to 2020
 (in percent)

Subsector/ Commodity	2018-2019				2019-2020			January to September	
	Q1	Q2	Q3	Q4	Q1	Q2	Q3	2018-2019	2019-2020
Crops	-6.0	-7.4	-9.3	-11.5	0.5	8.2	5.7	-7.5	4.7
Palay	-7.5	-17.3	-26.6	-24.9	-11.7	10.2	2.9	-16.3	-0.6
Corn	0.0	-3.0	-7.5	-18.8	-11.4	-12.4	-5.9	-3.8	-9.3
Banana	8.4	17.6	19.6	20.2	17.9	22.5	23.8	15.4	21.7
Coconut	-34.3	-24.4	-21.0	-5.1	13.7	14.5	24.4	-26.7	17.9
Mango	-16.9	-16.2	5.0	15.1	13.6	12.5	-1.4	-15.1	11.2
Sugarcane	18.7	9.2	-36.4	-12.9	-7.9	-16.2	-29.3	10.0	-9.7
Pineapple	-12.0	-25.3	-21.7	18.1	12.9	-8.7	-4.0	-20.5	-0.5
Cassava	27.4	25.0	36.2	10.2	16.8	24.1	-0.6	31.4	11.2
Rubber	-11.9	10.0	4.7	13.4	2.6	-34.2	-20.8	4.2	-23.5
Sweet Potato	1.5	17.2	11.8	4.6	8.2	15.1	-1.6	11.0	7.4
Onion	-32.7	-49.1	-31.9	5.0	50.8	102.3	40.1	-37.2	62.0
Eggplant	-10.4	-28.3	-22.2	11.5	15.9	10.8	-38.2	-20.5	2.9
Coffee	-2.5	-6.1	-3.5	-11.0	0.9	2.1	-10.0	-3.5	-0.8
Tobacco	6.3	5.9	53.5	107.0	-5.5	-0.4	79.0	10.2	1.7
Abaca	2.0	4.2	0.5	-7.2	0.1	-2.8	3.1	2.2	0.3
Tomato	-22.4	25.3	-24.0	11.3	40.3	-22.3	21.8	-3.8	4.8
Potato	-18.3	21.7	19.0	-9.5	44.8	45.3	-8.7	1.0	25.2
Ampalaya	-7.8	10.0	-19.0	12.5	-3.8	-8.2	-10.4	-4.9	-7.6
Cabbage	-19.8	3.0	-61.0	-24.7	-46.1	-0.3	-38.1	-28.3	-26.0
Calamansi	-27.0	20.5	-3.4	6.7	13.2	-23.8	-14.4	-6.2	-12.0
Mongo	2.8	-4.6	23.4	15.7	8.1	10.3	-2.7	-1.6	9.1
Cacao	16.0	12.4	12.1	13.8	-1.0	0.4	-4.4	13.3	-1.9
Other Crops	-12.2	3.3	-9.5	3.1	11.2	-3.7	-4.2	-5.9	1.0

Source: Philippine Statistics Authority

Table 10b. Growth Rates of Average Farmgate Prices of Livestock and Poultry
 First Quarter 2018 to Third Quarter 2020; January to September 2018 to 2020
 (in percent)

Subsector/ Commodity	2018-2019				2019-2020			January to September	
	Q1	Q2	Q3	Q4	Q1	Q2	Q3	2018-2019	2019-2020
Livestock	-1.0	-4.7	-8.5	-14.9	-6.5	1.3	6.5	-4.7	0.2
Hog	-2.2	-6.6	-10.8	-19.6	-8.9	0.9	6.6	-6.8	-2.5
Cattle	4.5	3.8	3.4	6.7	7.7	8.4	8.1	4.1	10.1
Carabao	4.7	5.3	3.6	3.7	5.6	4.9	4.1	5.3	8.4
Goat	10.0	9.9	6.9	9.1	3.4	1.2	2.3	9.2	7.6
Dairy	9.6	9.2	5.1	1.5	6.0	4.5	6.9	9.9	9.3
Poultry	-9.1	-6.4	1.0	15.0	8.3	2.3	-0.7	-4.8	3.2
Chicken	-12.3	-10.4	-2.7	12.9	3.9	-4.9	-7.2	-7.1	-3.8
Duck	13.9	11.5	14.3	24.3	2.0	0.6	11.9	15.1	8.8
Chicken Eggs	-2.1	5.1	11.3	21.0	19.4	18.4	12.6	4.9	17.2
Duck Eggs	1.5	3.4	8.2	10.8	11.0	5.6	2.1	3.0	7.1

Source: Philippine Statistics Authority

Table 10c. Growth Rates of Average Farmgate Prices of Fisheries
 First Quarter 2018 to Third Quarter 2020; January to September 2018 to 2020
 (in percent)

Subsector/ Commodity	2018-2019				2019-2020			January to September	
	Q1	Q2	Q3	Q4	Q1	Q2	Q3	2018-2019	2019-2020
Fisheries	7.0	6.7	-1.2	5.6	2.0	-3.3	-2.8	4.1	-1.6
Milkfish (Bangus)	5.8	-2.0	-3.2	5.6	0.6	10.4	-9.0	5.3	-3.5
Tilapia	1.7	2.4	5.7	5.7	9.3	7.7	5.9	1.6	8.4
Tiger prawn (Sugpo)	6.5	4.7	3.4	0.6	-6.5	2.3	-18.2	2.1	-8.4
Skipjack (Gulyasan)	13.9	23.5	6.9	15.5	-1.4	-13.9	-8.5	18.7	-8.0
Roundsad (Galunggong)	-5.7	-5.5	-2.5	-1.9	8.9	5.9	3.6	-11.3	7.7
Seaweed	9.8	20.2	1.7	1.3	0.2	-1.6	3.1	12.7	0.1
Yellowfin tuna (Tambakol/Bariles)	29.7	18.1	17.0	13.5	-0.9	-21.4	-14.1	18.4	-7.9
Mudcrab (Alimango)	1.2	1.3	-4.7	5.4	-0.3	8.2	-5.4	1.4	-2.5
Frigate tuna (Tulingan)	4.5	2.1	-0.8	7.4	9.2	-3.0	-5.2	-1.6	6.2
Big-eyed scad (Matangbaka)	7.6	1.9	-1.9	7.8	4.2	0.0	0.2	0.6	3.0
<i>Bali sardinella</i> (Tamban)	0.5	1.6	4.9	3.3	-12.5	-18.9	-2.6	6.7	-14.7
Squid (Pusit)	6.4	4.6	-1.0	3.7	9.2	0.4	0.4	1.7	5.8
Blue crab (Alimasag)	8.3	-0.2	-14.6	-13.6	-4.8	-15.2	-1.0	-9.4	0.6
Bigeye tuna (Tambakol/ Bariles)	-21.1	-15.7	-21.1	-17.5	-1.0	-7.3	-14.9	-12.0	4.9
Grouper (Lapu-lapu)	6.5	16.6	-67.6	7.9	11.1	-3.9	97.9	-40.9	42.7
Indian mackerel (Alumahan)	9.4	9.8	3.2	4.1	5.9	-1.0	6.4	6.0	8.8
Threadfin bream (Bisugo)	10.2	19.8	-0.7	8.2	3.8	-4.5	6.6	12.8	2.1
Slipmouth (Sapsap)	-4.9	10.6	7.1	1.8	10.3	0.9	-3.1	-0.6	8.9
Cavalla (Talakitok)	6.0	7.5	2.4	6.6	7.3	1.7	1.3	1.4	8.6
Fimbriated sardines (Tunsoy)	-9.8	11.2	-8.9	10.0	11.2	20.6	3.1	0.03	18.2
Other Fisheries	10.8	12.7	8.6	8.3	2.7	-11.5	-3.4	7.4	-3.0

Source: Philippine Statistics Authority

**PERFORMANCE OF PHILIPPINE AGRICULTURE
PHILIPPINE STATISTICS AUTHORITY**

DENNIS S. MAPA, Ph.D.

Undersecretary

National Statistician and Civil Registrar General

MACROECONOMIC ACCOUNTS SERVICE

VIVIAN R. ILARINA

Assistant National Statistician

AGRICULTURAL ACCOUNTS DIVISION

Maria Carol G. Duran

Chief Statistical Specialist

Manuela S. Nalugon

Supervising Statistical Specialist

Reynante A. Santos

Senior Statistical Specialist

Joynabel S. Paraguison

Statistical Specialist II

Joseph C. Evangelista

Statistical Specialist II

John Archie S. Pontigon

Statistical Analyst

For Inquiries:

PHILIPPINE STATISTICS AUTHORITY

PSA Complex, East Avenue, Diliman, Quezon City, Philippines 1101

Tel. No.+63(2) 84626600 loc. 820 • Telefax No.+63(2) 84626600 loc. 839

E-mail address: info@psa.gov.ph • kmcd.staff@psa.gov.ph



Visit us on
www.psa.gov.ph



Like us on Facebook
[/PhilippineStatisticsAuthority](https://www.facebook.com/PhilippineStatisticsAuthority)



Follow us on Twitter
[@PSAgovph](https://twitter.com/PSAgovph)